

ADDENDUM NO. 1

The City of Oklahoma City

PC-0611

39th STREET ENHANCEMENT PROJECT

November 13, 2020

Prepared by:

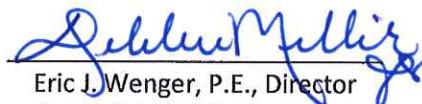
Johnson & Associates
1 E. Sheridan Ave, Suite 200
Oklahoma City, OK 73104
(405) 233-8075


Timothy W. Johnson, PE



Recommended for Approval:


Geoff Butler, AICP
Planning Director


Eric J. Wenger, P.E., Director
Public Works/City Engineer

APPROVED by the Council of the City of Oklahoma City this 8th day of December 2020.

ATTEST:

City Clerk

Mayor

PC-0611
39th STREET ENHANCEMENT PROJECT
ADDENDUM NO. 1

This addendum provides changes to the plans and specifications. Items in this addendum override the bid documents.

Addendum No. 1 consists of the following:

A. Bid Item Changes and Additions

1. The pay item "PELCO BRISTOL STREET LIGHTS" has been removed from the project.
2. The following items have been added to the base bid pay item list.

Description	Unit	Quantity
TACK COAT	GAL.	380
2" PVC SCH40 CONDUIT, TRENCHED	L.F.	1128
2" PVC SCH40 CONDUIT, BORED	L.F.	2209
LIGHT POLE PULL BOX TYPE II	EA.	23
LIGHT POLE FOUNDATION (COMPLETE)	EA.	20

3. The following items have been added to the Alternate 1 pay item list.

Description	Unit	Quantity
2" PVC SCH40 CONDUIT, TRENCHED	L.F.	388
2" PVC SCH40 CONDUIT, BORED	L.F.	343
LIGHT POLE PULL BOX TYPE II	EA.	9
LIGHT POLE FOUNDATION (COMPLETE)	EA.	6

B. Plan Changes

1. The above quantity changes have been also changed on plan sheet 1.1. Also on sheet 1.1, Note R14 is hereby revised to read "TACTILE MARKERS SHALL BE INSTALLED AND PAID FOR AS A SEPARATE QUANTITY".
2. A ZERO HEIGHT CURB DETAIL has been added to sheet 5.1.

3. Street Lighting Plans 11.0 & 11.1 have been revised to include conduit and pull boxes.
4. Street Lighting Plan 11.2 has been added to the plan sheet to include lighting along Barnes Avenue as part of Alternate #1. This plan also includes a footing detail for all light poles on the project.

C. Clarifications

1. While there is some flexibility in the start date, the desire will be to start construction within the first two weeks of January, weather permitting.
2. The installation of street lighting has changed on the project from being installed by OG&E and coordinated with the contractor to the contractor installing pole foundations, pull boxes and conduit while OG&E will pull wire and install the poles. The quantities have been revised as part of this addendum to reflect this change.
3. Notes for the Pre-Bid meeting have been posted on BidSync. The following is a summary of the non-mandatory meeting: This is a streetscape project with the "normal" amenities such as resurfacing, sidewalks, irrigation, and plantings. The most unique design feature is back-in angled parking. There is a small amount of signal work. Proper drainage will be crucial to a successful project, and the engineer will work with the contractor to achieve proper drainage. The bid is structured with a base bid on 39th from Youngs to Penn and alternate bids on Barnes from 39th to 40th and 40th from Barnes to Penn. The contractor will not be required to meet a strict sequencing plan with milestone dates for starting and completing different sections, but it must be acknowledged that 39th Street is an active entertainment district with busy vehicular and pedestrian traffic, so a controlled work zone is a must. The district has been involved and accommodating through the design process, and we expect the same will occur during construction.
4. All sidewalks shall be constructed of Class A 3,000 PSI P.C. concrete as shown on detail Sheet D-800.
5. The handrail line item is to be installed on retaining walls where specified and in the curb line as shown on the plans and in accordance with the details. All handrails shall be 3 inches in diameter in accordance with the details on sheet 7.0 of the plan set.
6. Tactile Markers shall be installed and paid for as part of their own bid item. The note including this cost as part of the ramps on sheet 1.1 has been revised as

part of this addendum.

7. Tack coat has been added to the bid items as part of this addendum and shall be installed in accordance with the details on sheet 5.1.
8. For this project the buildings were lower than the curb in many areas requiring the curb to be dropped and water to be allowed to flow to the street. A detail for the zero-height curb has been added to sheet 5.1 as part of this addendum.
9. Pipe bedding material shall be installed around all storm sewer pipe and shall be included in the cost of all storm sewer pipe construction in accordance with note R6 on the plans. "TYPE 'A' AGGREGATE BACKFILL" shall be used as backfill above the pipe bedding, beneath paved surfaces as shown in the plans, and as directed by note R22.
10. Saw cuts shall be included in the price of other items as indicated by note R17 on Sheet 1.1, and under section D3 of the general notes on Sheet 1.3 of the plan set.
11. The decomposed granite shall include fines per the plan description. No stabilizer is required for the granite.
12. The DES 6 INLET (DESIGN #6 INLET) shall be constructed in accordance with Oklahoma City Standard Detail D-105 for this type of inlet.

D. Attachments

Revised Plan Sheets 1.1, 5.1 & 11.0-11.2

END OF ADDENDUM NO. 1

BASE-BID SUMMARY OF QUANTITIES					
ITEM NUMBER	SPEC. SECTION	DESCRIPTION	NOTES	UNIT	QUANTITY AS-BUILT
1	802	CONSTRUCTION SIGNING AND TRAFFIC CONTROL		L.B.M.	1
2	810	MOBILIZATION		L.B.M.	1
3	801	CONSTRUCTION STAKING (CONSTRUCTION SURVEY)	(R12)	L.B.M.	1
4	900	ROCK & GROP INLET BARRIER	(R8)	EA	11
5	900	FILTER FABRIC SALT FENCE - COMPLETE IN PLACE	(R9)	L.F.	170
6	810	CLEANING AND GRUBBING	(R5)	L.B.M.	1
7	811	REMOVE STORM SEWER (24" DIA. AND LESS)	(R14)(R15)	L.F.	17
8	811	REMOVE STORM SEWER (JUNCTIONS) (STRUCTURE)	(R14)(R15)	EA	6
9	811	PLUS & MINUS EXIST. 18" RCP	(R14)(R15)	L.F.	55
10	812	REMOVE CURB AND GUTTER	(R14)(R15)	L.F.	3017
11	812	PAVEMENT REMOVAL	(R2)(R3)(R17)	S.Y.	1650
12	812	GRAVELLY REMOVAL	(R2)(R3)(R17)	S.Y.	1553
13	812	SEWELINE REMOVAL	(R3)(R12)(R17)	S.Y.	1062
14	453	REINFORCED CONCRETE PIPE (18 INCHES (18" RCP))	(R14)(R15)	L.F.	500
15	453	REINFORCED CONCRETE PIPE (15 INCHES (15" RCP))	(R14)(R15)	L.F.	60
16	454	MANHOLE (18" DIA.)	(R7)	EA	2
17	459	ADJUST MANHOLE FRAME & COVER TO FINISH GRADE	(R7)	EA	2
18	454	DESIGN 2 MANHOLE	(R7)	EA	8
19	454	DESIGN 6 MANHOLE	(R7)	EA	3
20	812	TYPE A AGGREGATE BACKFILL	(R22)	C.Y.	52
21	350	SEPARATOR PAVEMENT	(R17)	S.Y.	4100
22	350	AGGREGATE BASE (8 INCHES DEPTH) (W/ EXCAVATION)	(R1)	S.Y.	4100
23	354	PORTLAND CEMENT CONCRETE PAVEMENT (8") (DOVELED JOINTED)	(R17)	S.Y.	1695
24	354	PORTLAND CEMENT CONCRETE PAVEMENT (8") (DOVELED JOINTED) (PAVEMENT COLORED & FINISHED)	(R17)	S.Y.	579
25	355	INTEGRAL CURB (8 INCHES (8" RCP))	(R14)(R15)	L.F.	3000
26	355	CURB TRANSITION		L.F.	810
27	355	EDGEWALK CURB		L.F.	165
28	355	EDGEWALK CURB		L.F.	284
29	355	THICKENED EDGE SIDEWALK		L.F.	145
30	424	RETAINING WALL (STRUCTURAL CONCRETE TYPE BA)	(R13)	C.Y.	73
31	404	PIPEWORK		S.F.	25
32	404	CONCRETE STEPS WITH HANDRAIL		S.F.	25
33	823	8" P.C. CONCRETE DRAINAGE (RHS)	(R17)	S.Y.	1265
34	823	CONCRETE SIDEWALK	(R17)	S.Y.	4480
35	830	CURB RAMP - TYPE "S" (COMPLETE)	(R14)(R17)	S.Y.	218
36	830	CURB RAMP - TYPE "S" (COMPLETE)	(R14)(R17)	S.Y.	44
37	830	CURB RAMP - TYPE "S" (COMPLETE)	(R14)(R17)	S.Y.	220
38	830	TACTILE MARKER STRUTTED DOMES		S.F.	742
39	305	WALKWAY STOPS		EA	30
40	714	151 CONDUCTOR TRAFFIC SIGNAL ELECTRICAL CABLE		EA	100
41	714	151 CONDUCTOR TRAFFIC SIGNAL ELECTRICAL CABLE		S.Y.	26
42	729	SHEET ALUMINUM FENCE		S.F.	34
43	729	WAST ARM MOUNTED SIGNS		S.F.	27
44	733	SQUARE STEEL SIGN POST		L.F.	240
45	733	TRAFFIC STRIPE (MULTIPOLYMER) (RHS)	(R23)	L.F.	16000
46	733	TRAFFIC STRIPE (MULTIPOLYMER) (DOUBLE)		EA	4
47	733	TRAFFIC STRIPE (MULTIPOLYMER) (SMOOL)		EA	26
48	733	JDA PARKING SIGNING AND SIGN		EA	6
49	742	REMOVE SIGNAL HEAD & RETURN TO OHG		EA	1
50	742	ADJUST SIGNAL HEAD LOCATION		EA	3
51	505	REMOVE FIRE HYDRANT	(R14)(R15)	EA	2
52	505	WATERLINE PIPE (PUSH-ON) (WALL THICK 0.25)	(R14)(R15)	L.F.	55
53	505	PIPE TEE	(R14)	EA	1
54	505	8" CAST IRON VALVE AND BOX	(R14)	EA	1
55	505	6" x 4" BOND WITH RESTRAINED M.J. & CONCRETE THURST BLOCK	(R14)	EA	1
56	505	6" 1534 LUS. DEARS 2000PV	(R14)	EA	15
57	505	6" 1534 BREVIE	(R14)	EA	4
58	513	8" VRT CONNECTION	(R14)	EA	1
59	505	PIPE HYDRANT	(R14)	EA	1
60	505	12" FIRE HYDRANT RISER	(R14)	EA	1
61	511	SINGLE LENS SIGNAL LENS (RHS) (RHS)	(R14)	EA	3
62	512	REDUCATE EXISTING WATER SERVICE METER	(R14)(R15)	EA	8
63	520	ADJUST WATER METER BOX TO GRADE	(R7)	EA	22
64	819	REMOVE WATER METER AND BOX	(R14)	EA	3
65	819	REMOVE 8" WATER LINE		L.F.	51
66	812	TYPE A AGGREGATE BACKFILL	(R21)	C.Y.	11
67	812	SAND BACKFILL FOR PIPE BEDDING		C.Y.	6
68	505	HYDROSTATIC PRESSURE TIGHTENING, DISINFECTION, DECHLORINATION AND DISPOSAL OF MINERALIZED CHLORINATED WATER		L.B.M.	1
69	801	GPS AS-BUILT SURVEY	(R12)	L.B.M.	1
70	801	COLOR PHOTOGRAPHIC RECORDING, PRE- AND POST- CONSTRUCTION (RECORDED SEPARATELY ON DVD)		L.B.M.	1

BASE-BID SUMMARY OF QUANTITIES					
ITEM NUMBER	SPEC. SECTION	DESCRIPTION	NOTES	UNIT	QUANTITY AS-BUILT
71	351	TRUCK COST		EA	30
72	713	2" PVC SCH40 CONDUIT TRENCHED		L.F.	1123
73	713	2" PVC SCH40 CONDUIT BORED		L.F.	2200
74	725	LIGHT POLE BOLLARD TYPE B		EA	21
75	831	LIGHT POLE FOUNDATION (COMPLETE)		EA	20

RESURFACING SUMMARY OF QUANTITIES					
ITEM NUMBER	SPEC. SECTION	DESCRIPTION	NOTES	UNIT	QUANTITY AS-BUILT
1	301	1 1/4" TYPE B ASPHALT (R3) (R4) (R5) (R6) (R7) (R8) (R9) (R10) (R11) (R12) (R13) (R14) (R15) (R16) (R17) (R18) (R19) (R20) (R21) (R22) (R23) (R24) (R25) (R26) (R27) (R28) (R29) (R30) (R31) (R32) (R33) (R34) (R35) (R36) (R37) (R38) (R39) (R40) (R41) (R42) (R43) (R44) (R45) (R46) (R47) (R48) (R49) (R50) (R51) (R52) (R53) (R54) (R55) (R56) (R57) (R58) (R59) (R60) (R61) (R62) (R63) (R64) (R65) (R66) (R67) (R68) (R69) (R70) (R71) (R72) (R73) (R74) (R75) (R76) (R77) (R78) (R79) (R80) (R81) (R82) (R83) (R84) (R85) (R86) (R87) (R88) (R89) (R90) (R91) (R92) (R93) (R94) (R95) (R96) (R97) (R98) (R99) (R100)		TON	800
2	308	2" COLD MILLING		S.Y.	5433

ALTERNATE #1 (BARNES AVENUE LIGHTING)					
ITEM NUMBER	SPEC. SECTION	DESCRIPTION	NOTES	UNIT	QUANTITY AS-BUILT
1	713	2" PVC SCH40 CONDUIT TRENCHED		L.F.	385
2	713	2" PVC SCH40 CONDUIT BORED		L.F.	343
3	725	LIGHT POLE BOLLARD TYPE B		EA	9
4	831	LIGHT POLE FOUNDATION (COMPLETE)		EA	8

SEE SHEET L0-0.00 FOR HARDSCAPE, LANDSCAPE & IRRIGATION QUANTITIES & ALTERNATES.

PAY ITEM NOTES

- NOT USED.
- PAVEMENT MATERIALS REMOVED SHALL NOT BE MEASURED AS UNCLASSIFIED EXCAVATION.
- MATERIAL REMOVED TO BECOME THE PROPERTY OF THE CONTRACTOR AND SHALL BE DISPOSED OF BY THE CONTRACTOR IN A MANNER APPROVED BY THE ENGINEER.
- PRIOR TO FINAL ACCEPTANCE ALL EXPOSED CURB SURFACES SHALL BE CLEANED OF ALL DISCOLORATION SUCH AS ASPHALT STAIN, TIE WALKER OR OTHER DISCOLORATION.
- THE CONTRACTOR SHALL KEEP THE OPEN TRENCH DRAINED. COST TO BE INCLUDED IN OTHER ITEMS OF WORK.
- THE COST OF TRENCH EXCAVATION AND PIPE BEDDING SHALL BE INCLUDED IN THE UNIT PRICE BID FOR PIPE.
- THE COST OF EXCAVATION, BEDDING AND BACKFILL MATERIAL SHALL BE INCLUDED IN THE UNIT PRICE BID FOR THE STRUCTURE.
- THE COST OF EXCAVATION AND FINAL GRADING TO OBTAIN THE FINAL BUILDING ELEVATION SHALL BE INCLUDED IN THE UNIT PRICE BID FOR AGGREGATE BASE W/ EXCAVATION.
- THE CONTRACTOR SHALL BE RESPONSIBLE FOR SALT REMOVAL. COST TO BE INCLUDED IN OTHER ITEMS OF WORK.
- THE CONTRACTOR SHALL PROVIDE A TEMPORARY HANDICAPPED ACCESSIBLE PATH TO ALL BUILDING ENTRANCES DURING CONSTRUCTION.
- NOT USED.
- THE CONSULTING ENGINEER SHALL ESTABLISH HORIZONTAL AND VERTICAL CONTROLS FOR THE EXECUTION OF CONSTRUCTION. THE CONTRACTOR SHALL BE RESPONSIBLE FOR MAINTAINING ALL CONSTRUCTION STAKES.
- PRICE BID TO INCLUDE HYDRAULIC WATER STOP & WEAPHOLES AS SHOWN ON OHG STD. SHEET D-04.
- PRICE BID TO INCLUDE HYDRAULIC WATER STOP & WEAPHOLES AS SHOWN ON OHG STD. SHEET D-04.
- PRICE BID TO INCLUDE HYDRAULIC WATER STOP & WEAPHOLES AS SHOWN ON OHG STD. SHEET D-04.
- THE COST OF EXCAVATION ASSOCIATED WITH PIPE & STRUCTURE REMOVAL SHALL BE INCLUDED IN THE PRICE PER ITEM.
- THE COST OF SHEETING, SHORING AND BRACING SHALL BE INCLUDED IN THE UNIT PRICE BID PIPE.
- PRICE BID TO INCLUDE SAW CUT.
- TO BE INSTALLED 25' EITHER SIDE OF A DUMP PILE AND 25' ON THE UPSTREAM SIDE OF A FLOWAY PILE.
- TO BE USED AT THE DISCRETION OF THE ENGINEER. QUANTITY TO BE CALCULATED WITHIN THE HOT LAYERS OF THE TRENCH VARIOUS AS DETERMINED BY THE OLANZKA CITY STANDARD.

- NOT USED.
- FOR USE W/ STORM SEWER CONSTRUCTION.
- THE QUANTITY SHOWN INCLUDES BOTH WHITE AND YELLOW TRAFFIC STRIPE. TRAFFIC STRIPE (PLASTIC) IS MEASURED BY THE LINEAL FOOT OF 4" WIDE TRAFFIC STRIPE OR THE EQUIVALENT ADJUST OF 4" STRIPE UPON A MAXIMUM OF 10' WIDE STRIPE IS SPECIFIED IN THE PLANS OR STANDARD DRAWINGS.

ADDENDUM #1

11-13-20

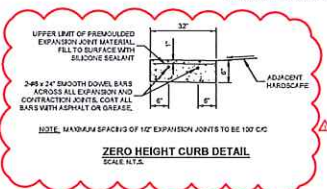
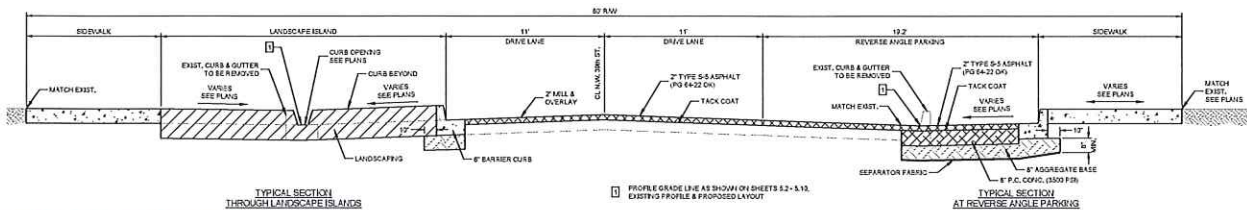
N.W. 39th STREET STREETSCAPE

PC-0511

REVISIONS		DATE
NO.	DESCRIPTION	
1		
2		
3		
4		
5		
6		
7		
8		
9		
10		
11		
12		
13		
14		
15		
16		
17		
18		
19		
20		
21		
22		
23		
24		
25		
26		
27		
28		
29		
30		
31		
32		
33		
34		
35		
36		
37		
38		
39		
40		
41		
42		
43		
44		
45		
46		
47		
48		
49		
50		
51		
52		
53		
54		
55		
56		
57		
58		
59		
60		
61		
62		
63		
64		
65		
66		
67		
68		
69		
70		
71		
72		
73		
74		
75		
76		
77		
78		
79		
80		
81		
82		
83		
84		
85		
86		
87		
88		
89		
90		
91		
92		
93		
94		
95		
96		
97		
98		
99		
100		

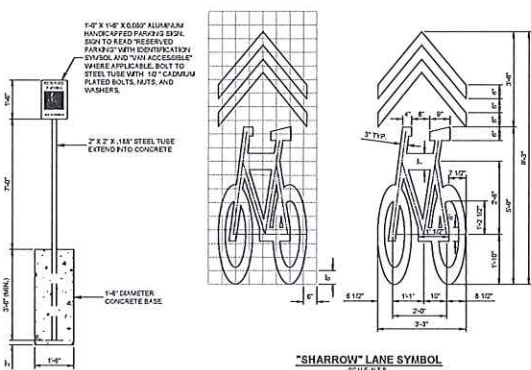
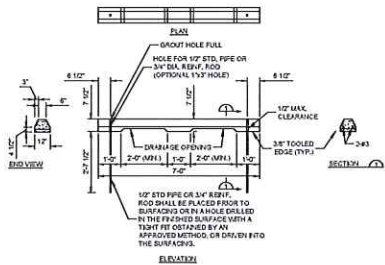
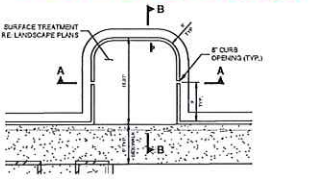
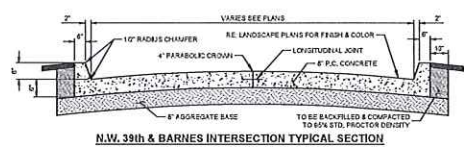
N.W. 39th STREET STREETSCAPE
OKLAHOMA CITY, OKLAHOMA COUNTY, OKLAHOMA

PC-0511
11-13-20
1.1



ADDENDUM #1

11-13-20



REVISIONS	
NO.	DESCRIPTION
1	DATE: 11-13-20

PROJECT INFORMATION

PROJECT NAME: N.W. 39th STREET STREETSCAPE

LOCATION: OKLAHOMA CITY, OKLAHOMA COUNTY, OKLAHOMA

PAVING DETAILS

DATE: 11-13-20

BY: [Signature]

CHECKED BY: [Signature]

APPROVED BY: [Signature]

SHEET NUMBER

5.1

Project & Location:
 N.W. 38th STREET STREETSCAPE
 OKLAHOMA CITY, OK 73109

Project & Location:
 OKLAHOMA CITY, OK 73109
 OKLAHOMA CITY, OKLAHOMA
 OKLAHOMA CITY, OKLAHOMA

Revisions:

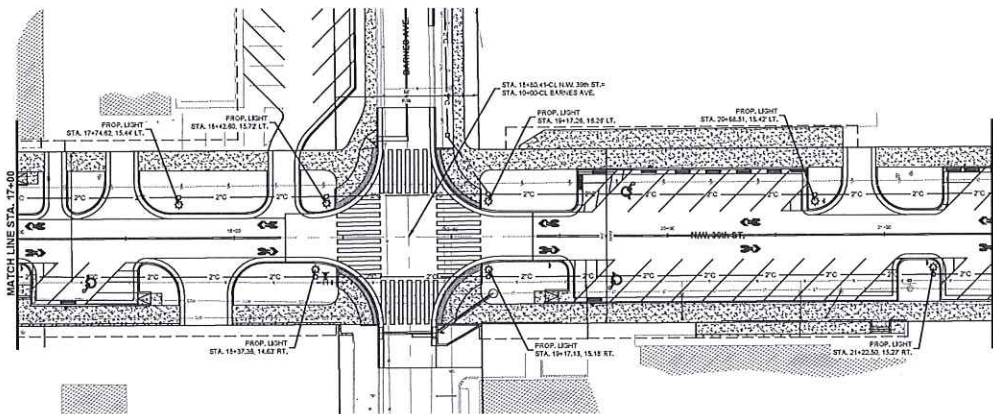
NO.	DESCRIPTION	DATE
1	OKLAHOMA CITY	10/10/10

Project & Location:
 N.W. 38th STREET STREETSCAPE
 OKLAHOMA CITY, OK 73109

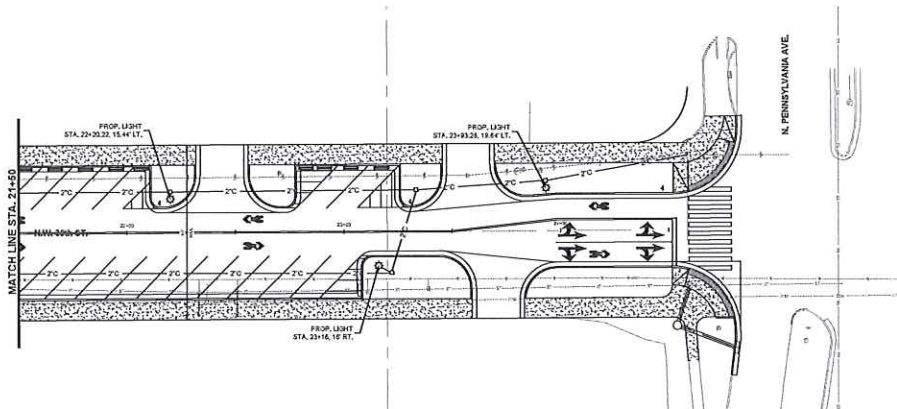
Project & Location:
 OKLAHOMA CITY, OK 73109
 OKLAHOMA CITY, OKLAHOMA
 OKLAHOMA CITY, OKLAHOMA

Project & Location:
 N.W. 38th STREET STREETSCAPE
 OKLAHOMA CITY, OK 73109

Project & Location:
 OKLAHOMA CITY, OK 73109
 OKLAHOMA CITY, OKLAHOMA
 OKLAHOMA CITY, OKLAHOMA



ADDENDUM #1
11-13-20



LEGEND	
	PROPOSED POLE LOCATION
	PROPOSED ELECTRIC PULLBOX
	PROPOSED ELECTRIC CONDUIT

ONE CALL UTILITY LOCATION NUMBER
844-5522
1-800-724-6443
This number is to be used for marking all the location of all underground utilities, including but not limited to, before any excavation work is performed.

N.W. 39th STREET STREETSCAPE

PC-0611

REVISIONS NO. DESCRIPTION DATE 1. 11-13-20	
PROJECT INFORMATION PROJECT NO. 11-13-20 PROJECT NAME N.W. 39th STREET STREETSCAPE CLIENT CITY OF OKLAHOMA DESIGNER J & A DRAWN BY J & A CHECKED BY J & A APPROVED BY J & A	
PROJECT LOCATION N.W. 39th STREET STREETSCAPE OKLAHOMA CITY, OKLAHOMA COUNTY, OKLAHOMA STREET LIGHTING PLAN	
SHEET NUMBER 11.1	



Proj. No. BC-0011
 Date 12/1/10
 Title chem
 Drawn By _____
 Approved By _____

SHEET NUMBER
11.2