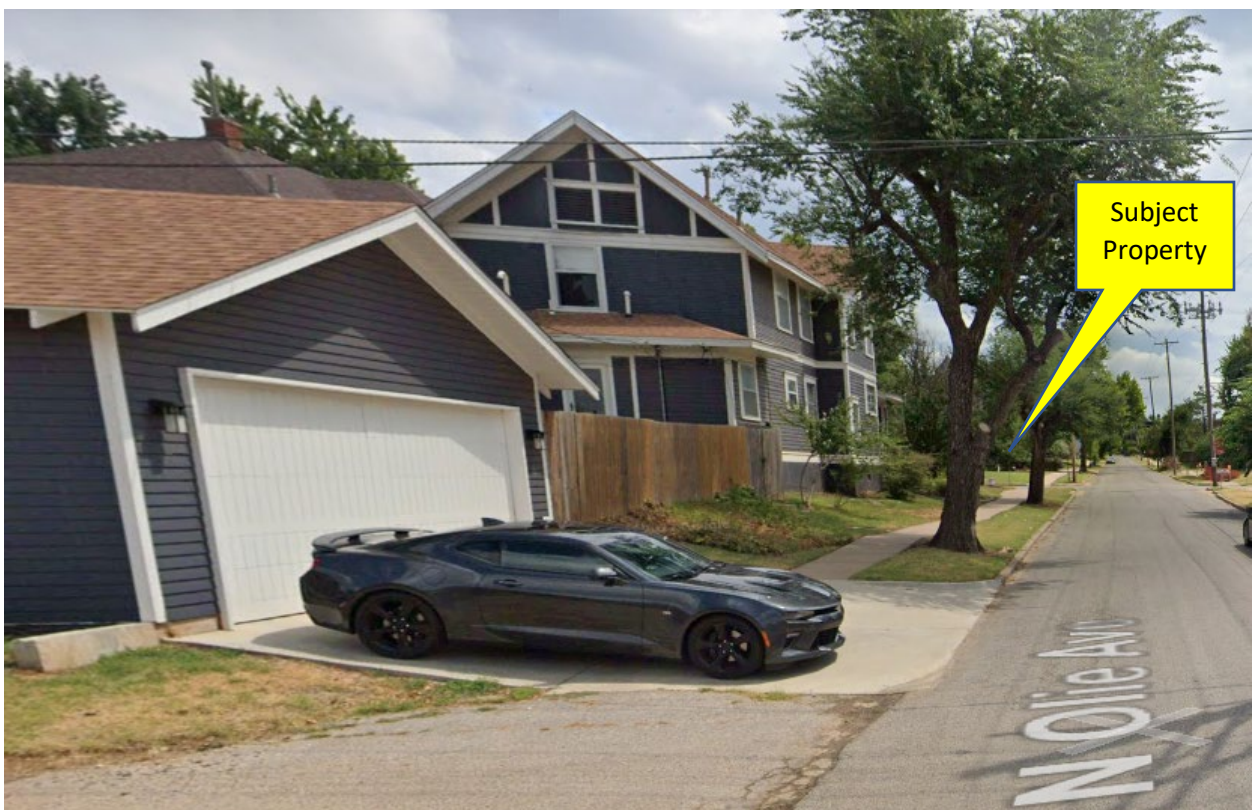
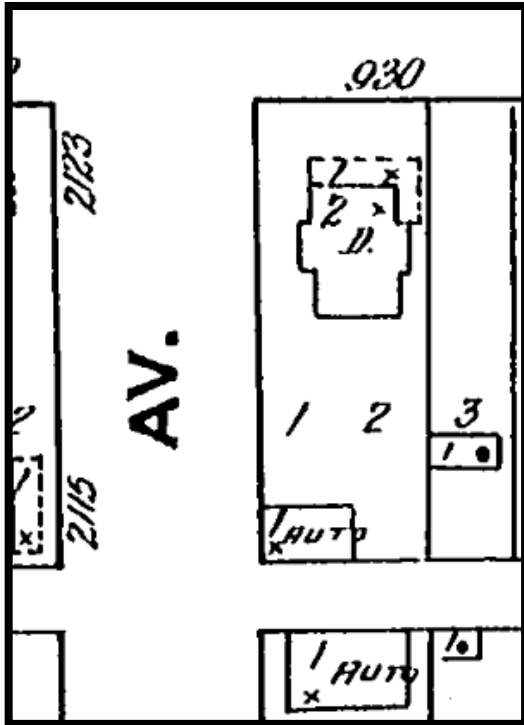




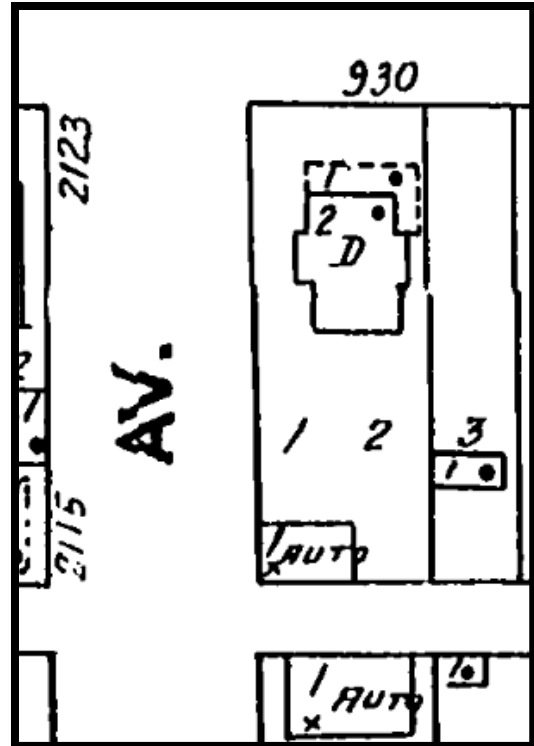
Google Maps Nov. 2022 – Looking southeast on N Olie Ave. at subject garage and garage south of the property.



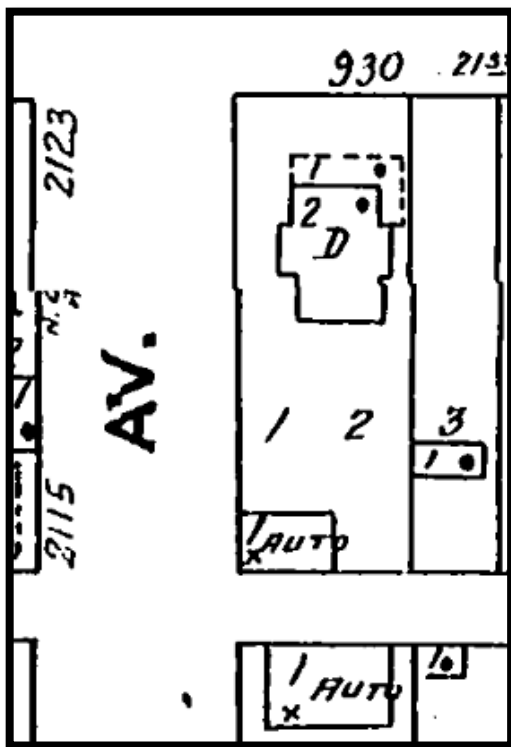
Google Maps Nov. 2022 – Looking south on N Olie Ave. at garage north of the subject property.



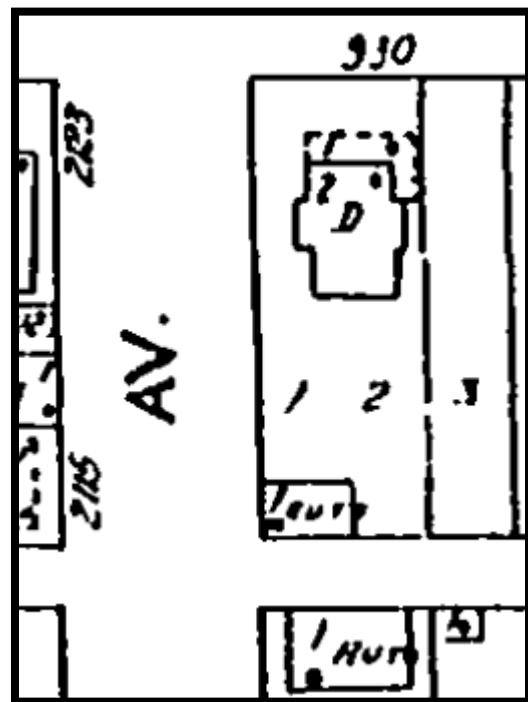
1922, Volume 2, Sheet 219



1922, Republished 1949, Volume 2, Sheet 219



1922-1950, Volume 2, Sheet 219



1922-1955, Volume 2, Sheet 219



County Assessor's Office – 928 NW 21st St. / Condos east of (and abutting) subject property, built in 1982