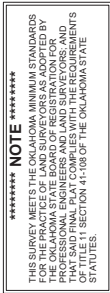
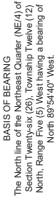


BEING A PART OF THE NE/4 OF SEC 26, T12N, R5W, IM
AN ADDITION TO OKLAHOMA CITY, CANADIAN COUNTY, OKLAHOMA



LEGEND:

POC = POINT OF COMMENCEMENT
POB = POINT OF BEGINNING
RW = RIGHT OF WAY
STAT. RW = STATUTORY RIGHT OF WAY
LVA = LIMITS OF NO ACCESS
NR = NOT RADIAL
BL = BUILDING LIMIT LINE
VU = PUBLIC UTILITY EASEMENT
UE = PUBLIC UTILITY EASEMENT
D & U/E = DRAINAGE & UTILITY EASEMENT



1. All land/medians within street rights-of-way, and arterial landscaping with its irrigation system, shall be maintained by the Property Owners Association within MAGNOLIA HARBOR PHASE 3.
2. Maintenance of all common areas and private drainage easements within MAGNOLIA HARBOR PHASE 3, or other adverse effect, including fences, either temporary or permanent, shall cause a blockage of flow, or an obstruction effect on the functioning of the storm water facility, shall be placed within the common areas intended for the use of conveyance of storm water, and private drainage easements shown. Certain items, such as trees, shrubs, plants, and docks, shall be kept in a manner to meet the requirements specified above.

| Curve # | Length | Radius | Tangent | Chord Length | Chord Direction | Delta |
|---------|---------|---------|---------|--------------|-----------------|-----------|
| C1 | 40.01' | 200.00' | 20.07° | 39.84' | S05°3831"E | 01°17'21" |
| C2 | 44.82' | 200.00' | 22.50° | 44.72' | S04°5711"E | 01°25'01" |
| C3 | 149.48' | 200.00' | 78.42° | 146.02' | S19°5641"E | 04°24'59" |
| C4 | 4.60' | 200.00' | 2.30° | 4.60' | N89°1507"W | 01°10'00" |
| C5 | 100.54' | 100.00' | 50.53° | 10.54' | N08°5573"E | 00°02'25" |

| Line Table | | |
|------------|--------|-------------|
| Line # | Length | Direction |
| L1 | 36.28' | S46°25'20"E |
| L2 | 33.95' | S42°51'16"W |
| L3 | 30.84' | S48°07'13"E |
| L4 | 7.20' | N48°07'13"W |
| L5 | 34.65' | S32°43'18"W |

TOTAL NUMBER OF LOTS = 23

TOTAL COMMON AREA ACRES = 2.00 AC

MAGNOLIA HARBOR PHASE 3

Johnson & Associates
1 E. Sheridan Ave., Suite 200
Oklahoma City, OK 73104
(405) 235-0076 FAX: (405) 235-0078 www.janlc.com
Certificate of Authorization #1484 Exp. Date: 06-30-2023

• ENGINEERS • SURVIVORS • ANNEXES •