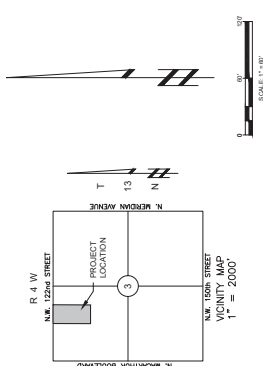


PRELIMINARY PLAT

OF

ECLIPSE

A PART OF THE NW/4 OF SEC. 3, T-13-N,
R-4-W, I.M. CITY OF OKLAHOMA CITY,
OKLAHOMA COUNTY, OKLAHOMA



LEGAL DESCRIPTION
A part of the NW/4 of Section Three (3), Township Thirteen (13) North, Range Four (4) West, Meridian, Oklahoma County, Oklahoma, being more particularly described as follows:
Beginning at a point on the North line of said NW/4 a distance of 660.00 feet S89°20'04"W from the Northeast corner of said NW/4; Thence S00°33'31"W parallel with the East line of said NW/4 a distance of 1300.00 feet; Thence S00°33'31"W parallel with the North line of said NW/4 a distance of 660.00 feet; Thence N00°33'31"E parallel with the East line of said NW/4 a distance of 1300.00 feet to the point of place of beginning. Containing 87,205 Sq. Ft. or 2.00 Acres, more or less.

Line	Length	Area	Order	Area	Order
1	12.00	144.00	1	144.00	1
2	12.00	144.00	2	144.00	2
3	12.00	144.00	3	144.00	3
4	12.00	144.00	4	144.00	4
5	12.00	144.00	5	144.00	5
6	12.00	144.00	6	144.00	6
7	12.00	144.00	7	144.00	7
8	12.00	144.00	8	144.00	8
9	12.00	144.00	9	144.00	9
10	12.00	144.00	10	144.00	10
11	12.00	144.00	11	144.00	11
12	12.00	144.00	12	144.00	12
13	12.00	144.00	13	144.00	13
14	12.00	144.00	14	144.00	14
15	12.00	144.00	15	144.00	15
16	12.00	144.00	16	144.00	16
17	12.00	144.00	17	144.00	17
18	12.00	144.00	18	144.00	18
19	12.00	144.00	19	144.00	19
20	12.00	144.00	20	144.00	20
21	12.00	144.00	21	144.00	21
22	12.00	144.00	22	144.00	22
23	12.00	144.00	23	144.00	23
24	12.00	144.00	24	144.00	24

Curve	Length	Area	Order	Area	Order
C1	12.00	144.00	1	144.00	1
C2	12.00	144.00	2	144.00	2
C3	12.00	144.00	3	144.00	3
C4	12.00	144.00	4	144.00	4
C5	12.00	144.00	5	144.00	5
C6	12.00	144.00	6	144.00	6
C7	12.00	144.00	7	144.00	7
C8	12.00	144.00	8	144.00	8
C9	12.00	144.00	9	144.00	9
C10	12.00	144.00	10	144.00	10
C11	12.00	144.00	11	144.00	11
C12	12.00	144.00	12	144.00	12
C13	12.00	144.00	13	144.00	13
C14	12.00	144.00	14	144.00	14
C15	12.00	144.00	15	144.00	15
C16	12.00	144.00	16	144.00	16
C17	12.00	144.00	17	144.00	17
C18	12.00	144.00	18	144.00	18
C19	12.00	144.00	19	144.00	19
C20	12.00	144.00	20	144.00	20
C21	12.00	144.00	21	144.00	21
C22	12.00	144.00	22	144.00	22
C23	12.00	144.00	23	144.00	23
C24	12.00	144.00	24	144.00	24

LEGEND
BUILDING LIMIT LINE
EXISTING BUILDING
EXISTING DRIVEWAY
EXISTING COMMON AREA
RIGHT-OF-WAY
PUBLIC UTILITY EASEMENT
PRELIMINARY PLAT

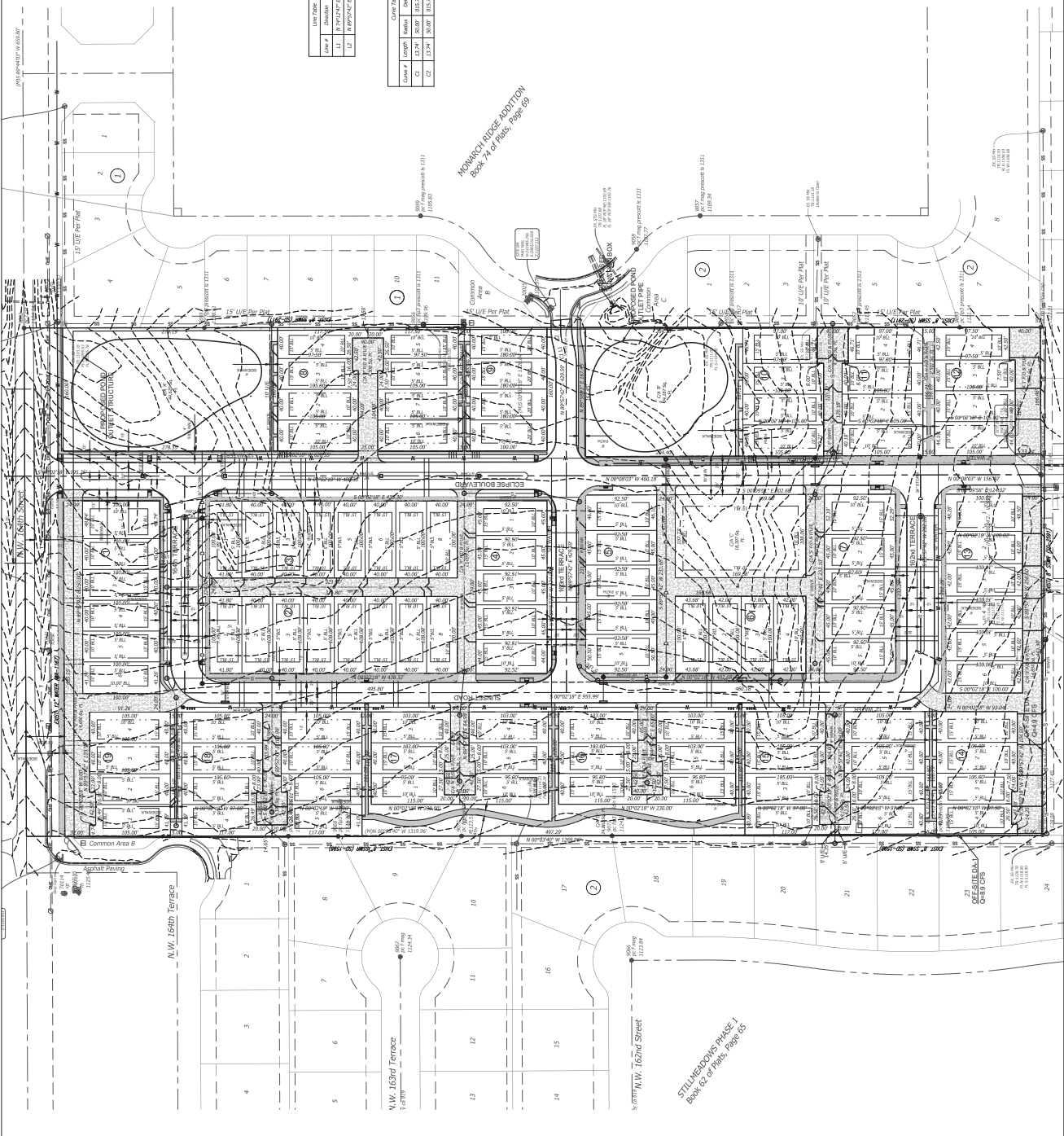
DEVELOPMENT SUMMARY
AREAS
TOTAL
COMMON
R.O.W.
TOTAL
LOTS
DENSITY

REV.	DESCRIPTION	DATE
1	INITIAL	05/11/23
2	REVISION	05/11/23
3	REVISION	05/11/23
4	REVISION	05/11/23
5	REVISION	05/11/23
6	REVISION	05/11/23
7	REVISION	05/11/23
8	REVISION	05/11/23
9	REVISION	05/11/23
10	REVISION	05/11/23
11	REVISION	05/11/23
12	REVISION	05/11/23
13	REVISION	05/11/23
14	REVISION	05/11/23
15	REVISION	05/11/23
16	REVISION	05/11/23
17	REVISION	05/11/23
18	REVISION	05/11/23
19	REVISION	05/11/23
20	REVISION	05/11/23
21	REVISION	05/11/23
22	REVISION	05/11/23
23	REVISION	05/11/23
24	REVISION	05/11/23

OWNER
SITE LAB PARTNERS, LLC
13005 TECHNOLOGY CR., SUITE B
OKLAHOMA CITY, OKLAHOMA

PRELIMINARY PLAT
DRAWN BY
CHECKED BY
DATE

Project No.: 316264.01



MONROE RIDGE ADDITION
Book 74 of Plats, Page 69

STU HEADINGS PHASE 1
Book 53 of Plats, Page 15