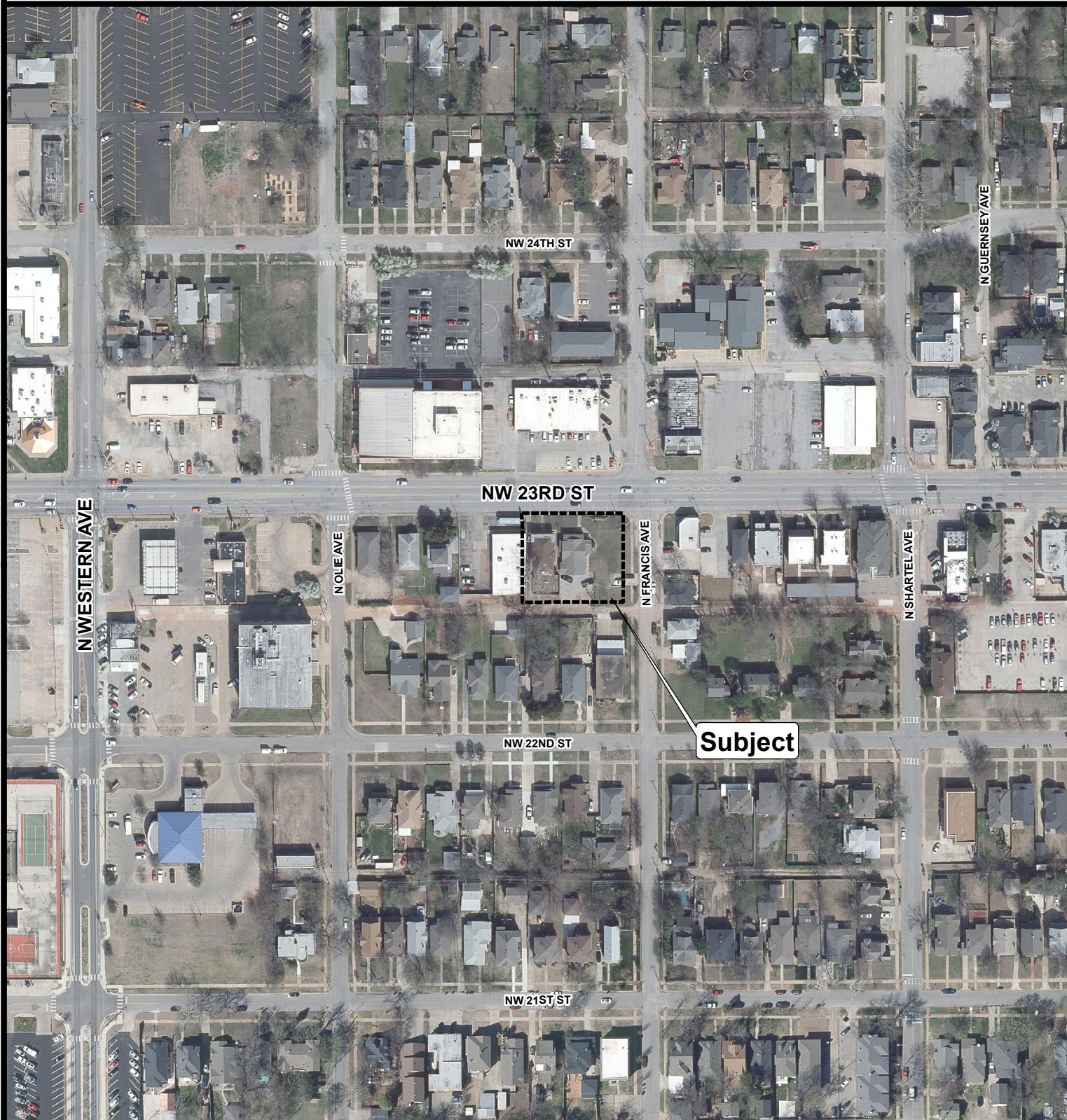


**Case No: SPUD-1481      Applicant: Omega Investments, LLC**  
**Existing Zoning: C-3 / UD / TT / SBL-6**  
**Location: 904 NW 23rd St.**



Aerial Photo from 2/2020



The City of  
OKLAHOMA CITY

## Simplified Planned Unit Development



0 100 200 Feet