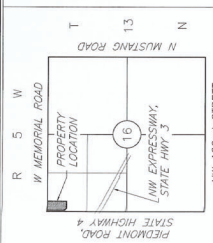
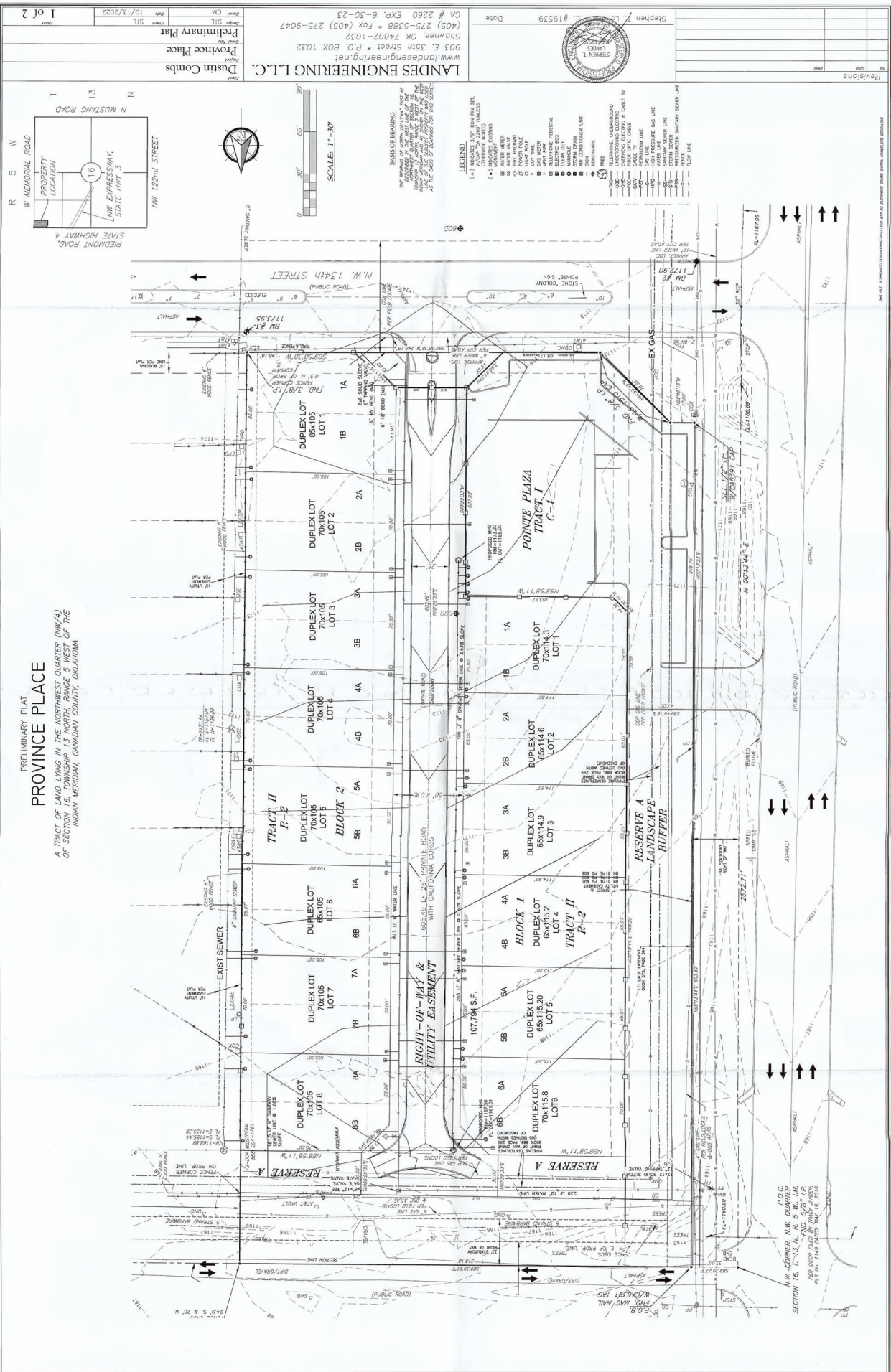


PRELIMINARY PLAT  
PROVINCE PLACE

A TRACT OF LAND LYING IN THE NORTHWEST QUARTER (NW/4)  
OF SECTION 16, TOWNSHIP 13 NORTH, RANGE 5 WEST OF THE  
INDIAN MERIDIAN, CANADIAN COUNTY, OKLAHOMA



**LANDS ENGINEERING L.L.C.**  
903 E. 35th Street • P.O. BOX 1032  
Shawnee, OK 74802-1032  
(405) 275-5388 • Fax (405) 275-9047  
CA # 2260 EXP. 6-30-23

**Dustin Combs**  
Preliminary Plat  
Province Place  
10/13/2022

**STEPHEN T. LANDS**  
Surveyor  
#19539

Revisions