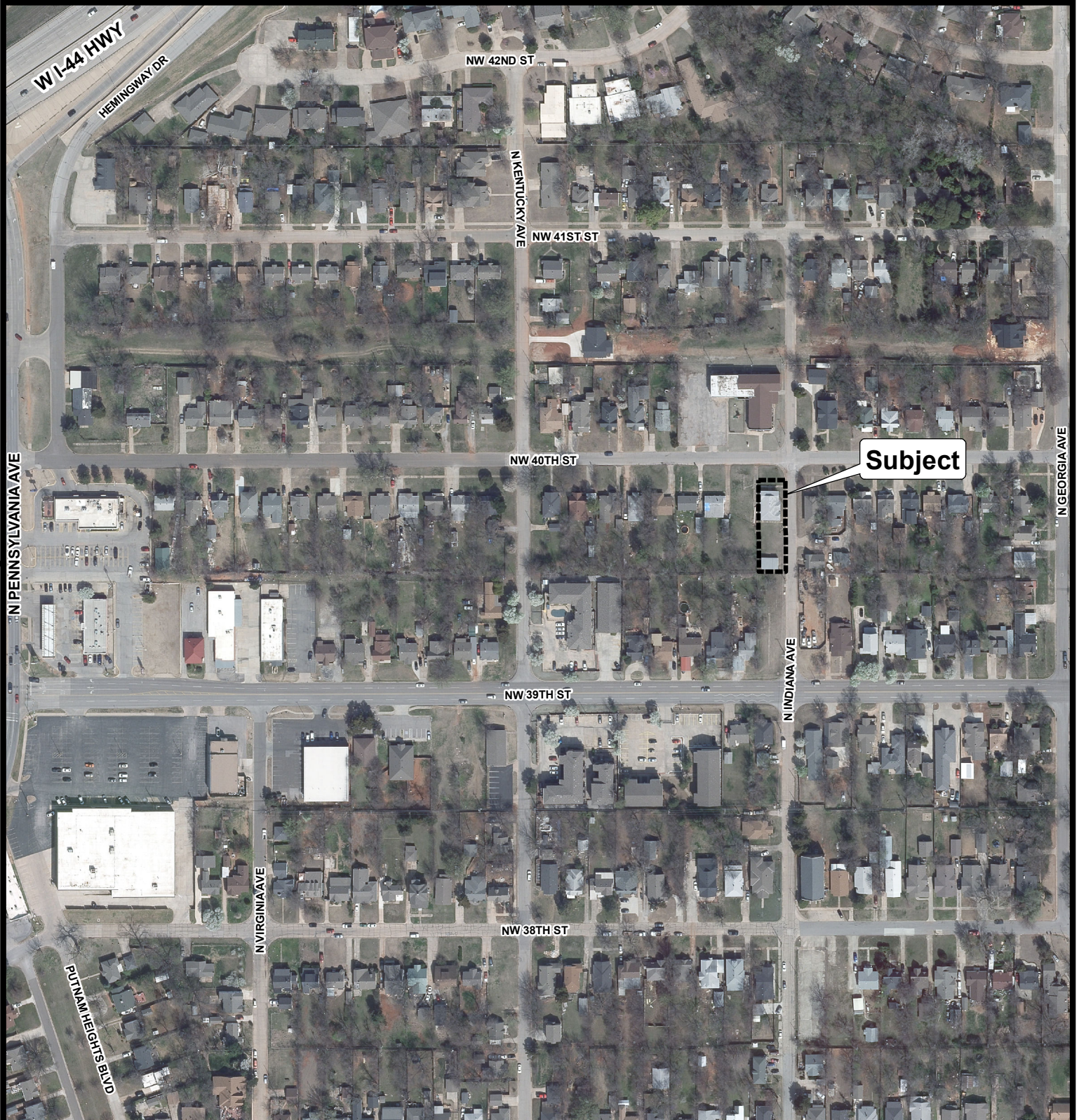


Case No: SPUD-1498 Applicant: Omega Investments, LLC
Existing Zoning: R-1
Location: 1800 NW 40th St.



Aerial Photo from 2/2020

Note: "Subject" is located approximately 1,560' North of NW 36th St.



The City of
OKLAHOMA CITY

Simplified Planned Unit Development



0 125 250
Feet