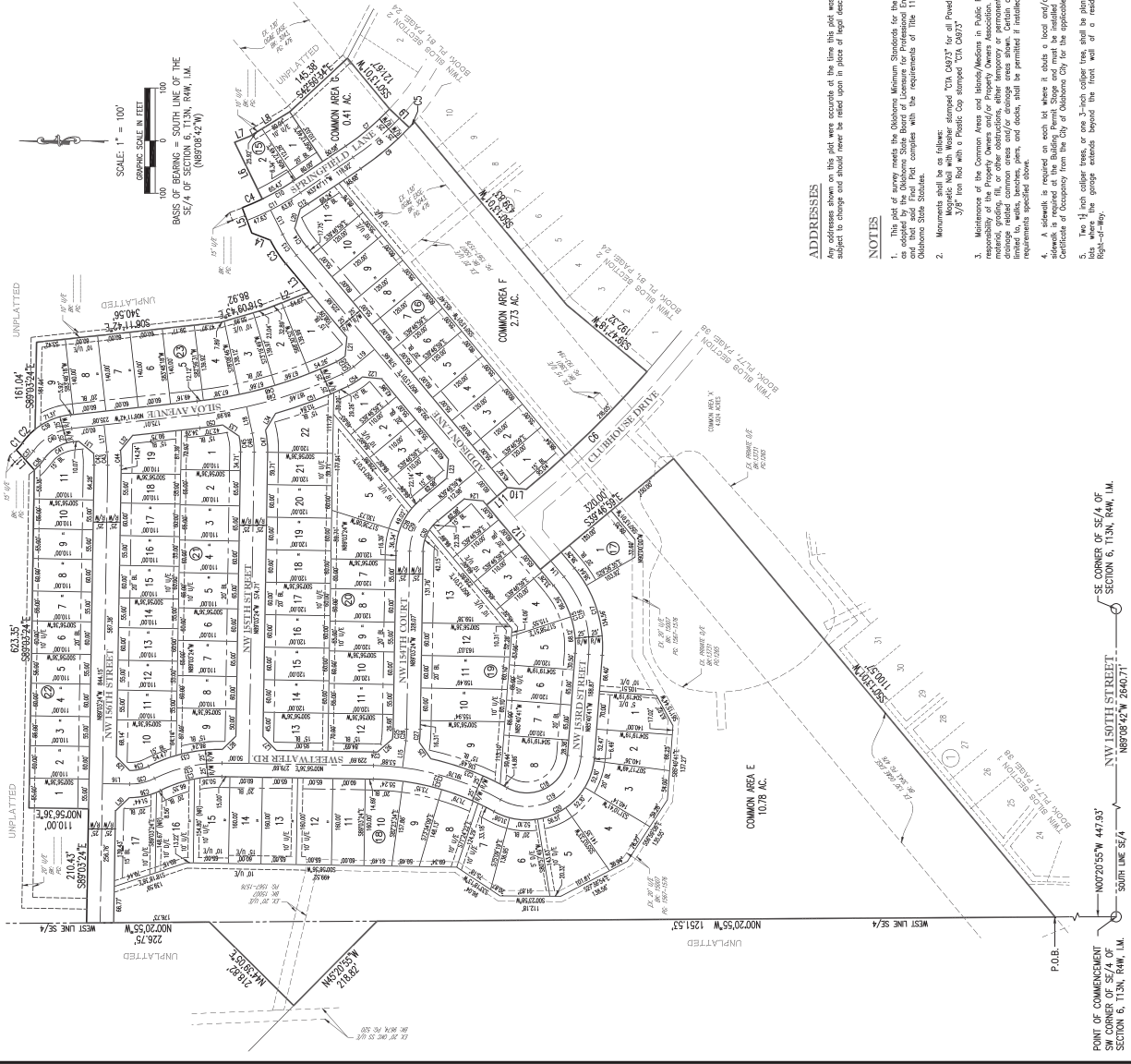


A PART OF THE S/2 OF SECTION 6, T13N, R4W, I.M.
OKLAHOMA CITY, OKLAHOMA COUNTY, OKLAHOMA

[illegible]

LINE TABLE		
LINE #	LENGTH	DIRECTION
121	35.35	S84° 48' 58"E
122	35.35	N05° 15' 01"E
123	35.35	S84° 48' 58"E
124	35.35	N05° 15' 01"E
125	37.07	N54° 47' 33"E
126	37.07	S46° 13' 25"E
127	35.35	S65° 36' 30"E
128	35.35	S44° 03' 24"E
129	35.35	S45° 36' 30"E
130	35.35	S44° 03' 24"E
131	35.35	S05° 36' 30"E
132	35.35	N42° 11' 00"E
133	35.35	S05° 36' 30"E
134	35.35	N05° 15' 01"E

LINE TABLE		
LINE #	LENGTH	DIRECTION
L1	50.007	N48° 07' 44"E
L2	12	S87° 06' 44"E
L3	87.505	N67° 12' 01"E
L4	43.505	N67° 12' 01"E
L5	37.505	N67° 12' 01"E
L6	50.007	N67° 12' 01"E
L7	113.507	N67° 06' 20"E
L8	30.507	S21° 24' 42"E
L9	85.507	S37° 36' 42"E
L10	50.007	S37° 36' 42"E
L11	50.007	N45° 17' 24"N
L12	30.507	N45° 17' 24"N
L13	50.007	N45° 17' 24"N
L14	30.507	N45° 17' 24"N
L15	50.007	N45° 17' 24"N
L16	50.007	N45° 17' 24"N
L17	50.007	N45° 17' 24"N
L18	50.007	N45° 17' 24"N
L19	50.007	N45° 17' 24"N
L20	50.007	N45° 17' 24"N
L21	50.007	N45° 17' 24"N
L22	50.007	N45° 17' 24"N
L23	50.007	N45° 17' 24"N
L24	50.007	N45° 17' 24"N
L25	50.007	N45° 17' 24"N
L26	50.007	N45° 17' 24"N
L27	50.007	N45° 17' 24"N
L28	50.007	N45° 17' 24"N
L29	50.007	N45° 17' 24"N
L30	50.007	N45° 17' 24"N
L31	50.007	N45° 17' 24"N
L32	50.007	N45° 17' 24"N
L33	50.007	N45° 17' 24"N
L34	50.007	N45° 17' 24"N
L35	50.007	N45° 17' 24"N
L36	50.007	N45° 17' 24"N
L37	50.007	N45° 17' 24"N
L38	50.007	N45° 17' 24"N
L39	50.007	N45° 17' 24"N
L40	50.007	N45° 17' 24"N
L41	50.007	N45° 17' 24"N
L42	50.007	N45° 17' 24"N
L43	50.007	N45° 17' 24"N
L44	50.007	N45° 17' 24"N
L45	50.007	N45° 17' 24"N
L46	50.007	N45° 17' 24"N
L47	50.007	N45° 17' 24"N
L48	50.007	N45° 17' 24"N
L49	50.007	N45° 17' 24"N
L50	50.007	N45° 17' 24"N
L51	50.007	N45° 17' 24"N
L52	50.007	N45° 17' 24"N
L53	50.007	N45° 17' 24"N
L54	50.007	N45° 17' 24"N
L55	50.007	N45° 17' 24"N
L56	50.007	N45° 17' 24"N
L57	50.007	N45° 17' 24"N
L58	50.007	N45° 17' 24"N
L59	50.007	N45° 17' 24"N
L60	50.007	N45° 17' 24"N
L61	50.007	N45° 17' 24"N
L62	50.007	N45° 17' 24"N
L63	50.007	N45° 17' 24"N
L64	50.007	N45° 17' 24"N
L65	50.007	N45° 17' 24"N
L66	50.007	N45° 17' 24"N
L67	50.007	N45° 17' 24"N
L68	50.007	N45° 17' 24"N
L69	50.007	N45° 17' 24"N
L70	50.007	N45° 17' 24"N
L71	50.007	N45° 17' 24"N
L72	50.007	N45° 17' 24"N
L73	50.007	N45° 17' 24"N
L74	50.007	N45° 17' 24"N
L75	50.007	N45° 17' 24"N
L76	50.007	N45° 17' 24"N
L77	50.007	N45° 17' 24"N
L78	50.007	N45° 17' 24"N
L79	50.007	N45° 17' 24"N
L80	50.007	N45° 17' 24"N
L81	50.007	N45° 17' 24"N
L82	50.007	N45° 17' 24"N
L83	50.007	N45° 17' 24"N
L84	50.007	N45° 17' 24"N
L85	50.007	N45° 17' 24"N
L86	50.007	N45° 17' 24"N
L87	50.007	N45° 17' 24"N
L88	50.007	N45° 17' 24"N
L89	50.007	N45° 17' 24"N
L90	50.007	N45° 17' 24"N
L91	50.007	N45° 17' 24"N
L92	50.007	N45° 17' 24"N

LEGEND

P.O.B.	POINT OF BEGINNING
EX.	EXISTING
R/W	RIGHT-OF-WAY
BL	BUILDING LIMIT LINE
U/E	UTILITY EASEMENT
D/E	DRAINAGE EASEMENT
P/D/E	PRIVATE DRAINAGE EASEMENT
(NR)	NONRADIAL LINE

ADDRESSES

NOTES

1. This plot of survey meets the Oklahoma Minimum Standards for the Practice of Land Surveying as adopted by the Oklahoma State Board of Licensure for Professional Engineers and Land Surveyors and that said Final Plot complies with the requirements of Title 11, Section 41-108 of the Oklahoma State Statutes.

2. Instruments shall be as follows:
 - a. Moquette No. 10 with Weather stamped "UQ 00377 for all Paved Surfaces or 3/8" from Road with a Plastic Cap stamped "UQ 00375"
 - b. Maintenance of the Common Areas, Parks, Rights-of-Way shall be the responsibility of the City of Utopia. The City shall be responsible for the maintenance, grading, fill, or other obstructions, tree removal or removal of the damaged, rotted, fallen, or other disintegrated trees and permanent, shall be placed within the right-of-way and/or disintegrated areas shown. Certain amenities such as, but not limited to, benches, trash receptacles, and other amenities shall be placed within the right-of-way, and each shall be permitted if installed in a manner to meet the requirements specified above.
 - c. A sidewalk is required on both sides of the lot where it abuts a local street or a collector street. A sidewalk is required on the building front. Utopia must be installed prior to the issuance of a Certificate of Occupancy from the City of Utopia for the applicable lot.
 - d. Top 18" of the gutter extends beyond the front wall, and shall be installed in the front yard of the lot.
 - e. Top 18" of the gutter extends beyond the front wall, and shall be installed in the front yard of the lot.
 - f. Top 18" of the gutter extends beyond the front wall, and shall be installed in the front yard of the lot.

FINAL PLAT
TWIN SILOS SECTION 3



SHEET NO.: 2 OF 2
DATE: 08/19/2022
PROJECT NO.: 226062

TYPICAL BLOCK CORNER