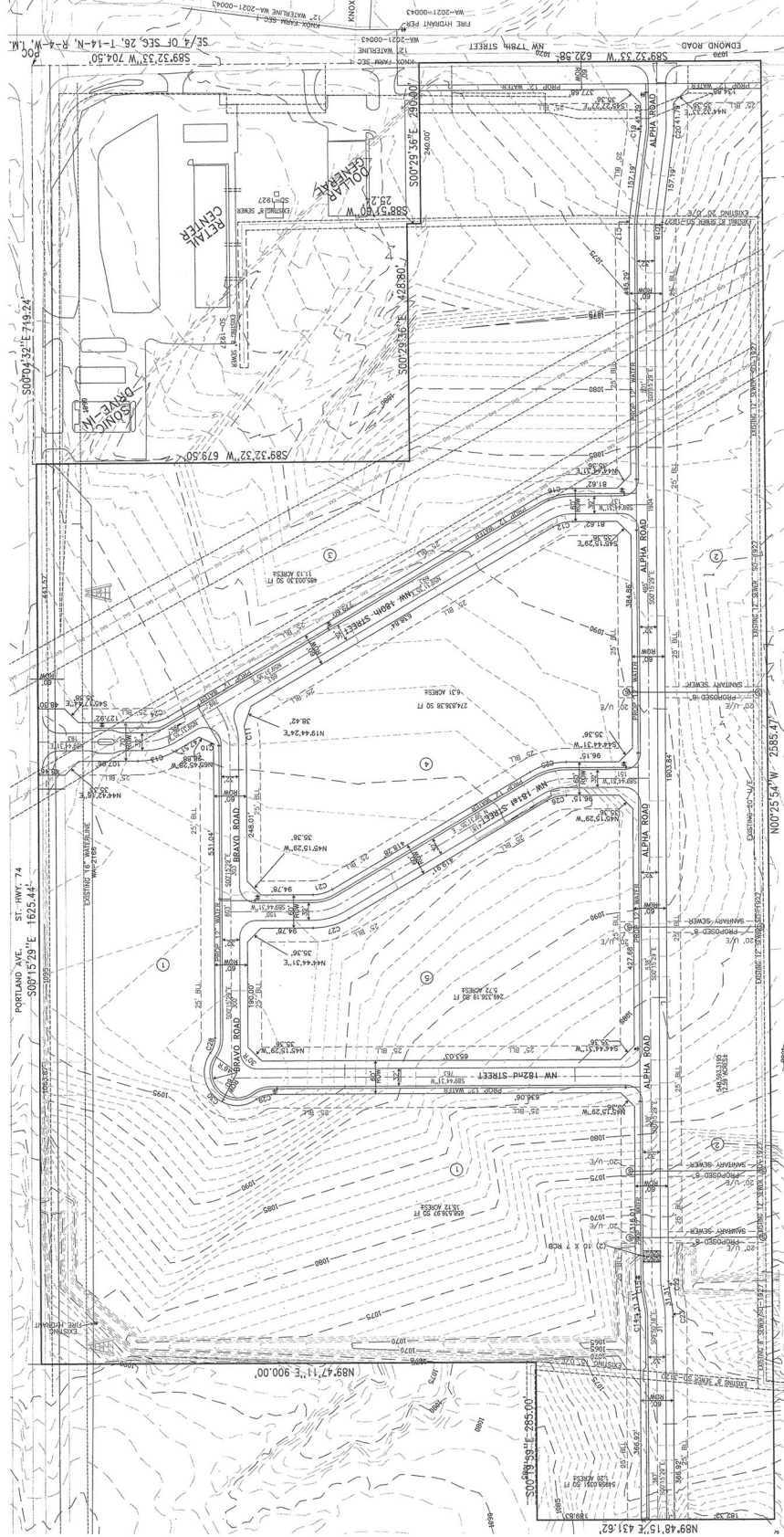


A PART OF THE SE/4 OF SEC 26, T-14-N, R-4-W, I.M.
OKLAHOMA CITY, OKLAHOMA COUNTY, OKLAHOMA



SCALE: 1" = 200'

DEVELOPER
SALY, LP & CENTOMA
17917 N PORTLAND AVENUE
EDMOND, OK 73012-8960
PHONE: (405) 850-0532
SAM COURTY

LEGEND	
U/E	UTILITY EASEMENT
D/E	DRAINAGE EASEMENT

Cluster	Radius	Depth	Area	Chord length	Arc length
C1	100.0	30.125°S	52.13	52.13	52.74
C2	100.0	30.125°S	52.13	52.13	52.74
C3	100.0	30.125°S	52.13	52.13	52.74
C4	100.0	30.125°S	52.13	52.13	52.74
C5	100.0	30.125°S	52.13	52.13	52.74
C6	100.0	30.125°S	52.13	52.13	52.74
C7	100.0	30.125°S	52.13	52.13	52.74
C8	100.0	30.125°S	52.13	52.13	52.74
C9	100.0	30.125°S	52.13	52.13	52.74
C10	100.0	30.125°S	52.13	52.13	52.74
C11	130.0	40.171°S	50.73	50.73	52.38
C12	70.0	30.125°S	36.49	36.49	36.92
C13	70.0	30.125°S	36.49	36.49	36.92
C14	70.0	30.125°S	36.49	36.49	36.92
C15	130.0	40.171°S	50.73	50.73	52.38
C16	130.0	40.171°S	50.73	50.73	52.38
C17	130.0	40.171°S	50.73	50.73	52.38
C18	70.0	30.125°S	36.49	36.49	36.92
C19	70.0	30.125°S	36.49	36.49	36.92
C20	70.0	30.125°S	36.49	36.49	36.92
C21	70.0	30.125°S	36.49	36.49	36.92
C22	70.0	30.125°S	36.49	36.49	36.92
C23	70.0	30.125°S	36.49	36.49	36.92
C24	70.0	30.125°S	36.49	36.49	36.92
C25	130.0	40.171°S	50.73	50.73	52.38
C26	130.0	40.171°S	50.73	50.73	52.38
C27	130.0	40.171°S	50.73	50.73	52.38
C28	46.0	35.642°N	27.73	27.73	28.72
C29	46.0	35.642°N	27.73	27.73	28.72
C30	46.0	35.642°N	27.73	27.73	28.72
C31	46.0	35.642°N	27.73	27.73	28.72
C32	46.0	35.642°N	27.73	27.73	28.72
C33	46.0	35.642°N	27.73	27.73	28.72
C34	46.0	35.642°N	27.73	27.73	28.72
C35	46.0	35.642°N	27.73	27.73	28.72
C36	46.0	35.642°N	27.73	27.73	28.72
C37	46.0	35.642°N	27.73	27.73	28.72
C38	46.0	35.642°N	27.73	27.73	28.72
C39	46.0	35.642°N	27.73	27.73	28.72
C40	46.0	35.642°N	27.73	27.73	28.72
C41	46.0	35.642°N	27.73	27.73	28.72
C42	46.0	35.642°N	27.73	27.73	28.72
C43	46.0	35.642°N	27.73	27.73	28.72
C44	46.0	35.642°N	27.73	27.73	28.72
C45	46.0	35.642°N	27.73	27.73	28.72
C46	46.0	35.642°N	27.73	27.73	28.72
C47	46.0	35.642°N	27.73	27.73	28.72
C48	46.0	35.642°N	27.73	27.73	28.72
C49	46.0	35.642°N	27.73	27.73	28.72
C50	46.0	35.642°N	27.73	27.73	28.72
C51	46.0	35.642°N	27.73	27.73	28.72
C52	46.0	35.642°N	27.73	27.73	28.72
C53	46.0	35.642°N	27.73	27.73	28.72
C54	46.0	35.642°N	27.73	27.73	28.72
C55	46.0	35.642°N	27.73	27.73	28.72
C56	46.0	35.642°N	27.73	27.73	28.72
C57	46.0	35.642°N	27.73	27.73	28.72
C58	46.0	35.642°N	27.73	27.73	28.72
C59	46.0	35.642°N	27.73	27.73	28.72
C60	46.0	35.642°N	27.73	27.73	28.72
C61	46.0	35.642°N	27.73	27.73	28.72
C62	46.0	35.642°N	27.73	27.73	28.72

Tract 1 —
A part of the Southeast Quarter (SE $\frac{1}{4}$) of the Southeast Quarter (SE $\frac{1}{4}$) of Section 26, Township 14 North, Range 4 West of the Indian Meridian, Oklahoma County, Oklahoma, and more particularly described as follows: Commencing at the Southeast corner of Section 26, Township 14 North, Range 4 West; Thence West a distance of 67.5 feet to a point; Thence North a distance of 50 feet to the point of place of beginning; Thence continuing North a distance of 669.74 feet; Thence East a distance of 325 feet; Thence South a distance of 669.74 feet; Thence West a distance of 325 feet to the point or place of beginning, LESS AND EXCEPT that part hereafter described in tract 3.

[illegible]

Tract 3 -
Lot One (1), Block One (1), DEER CREEK CROSSING, on addition to Oklahoma County, Oklahoma, according to the plat thereof recorded in Book 64 of Plats, Page 39, LESS AND EXCEPT from the State of described tracts of port heretofore conveyed to the State of Oklahoma by Report of Commissioners in the District Court of Oklahoma County Case No. CJ-2007-8485, recorded in Book 10778, Page 1130 and Case No. CJ-2007-8484, recorded in Book 10787, Page 1150.