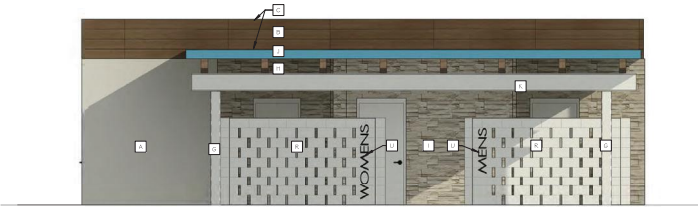




NORTH ELEVATION - A1

SCALE: 1/4" = 1'-0"



EAST ELEVATION - A2

SCALE: 1/4" = 1'-0"



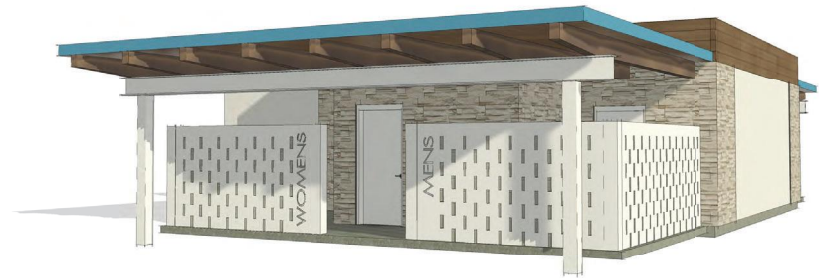
SOUTH ELEVATION - A3

SCALE: 1/4" = 1'-0"



WEST ELEVATION - A4

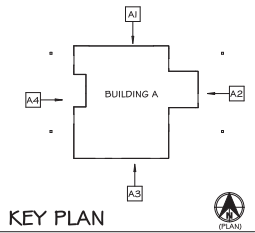
SCALE: 1/4" = 1'-0"



BUILDING A - PERSPECTIVE VIEW

NOT TO SCALE

EXTERIOR FINISH SCHEDULE			
BOX	MATERIAL / MANUFACTURER	DESCRIPTION / COLOR	NOTES
A	EPS/RYVIT	FINISH 1048/2121	...
B	PREF. CONCRETE GLASSING / NICHIA	VENESE WOOD 1004H	...
C	PREFINISHED METAL COPING
D	OVERHEAD COILING GRILLE/OVERHEAD DOOR	RAL 100 "GRAUBESSE" POWDER COAT	...
E	HOLLOW METAL DOOR	SW 7570 "TIGER" WHITE	...
F	NOT USED
G	STEEL COLUMN	PAINTED SW 7570 "TIGER" WHITE	...
H	GLULAM BEAM	ROCK 100 "BIRCH" 100 "BIRCH" CARBON BROWN	...
I	STONE VENEER/CLADDING	CONTEMPORARY CREAM LEOBOD	...
J	ACM PANEL SYSTEM/CLADDING	ALUCOBOND PLUS "OCEAN"	...
K	STEEL BEAM	PAINTED SW 7570 "TIGER" WHITE	...
L	SEPARATING SERVICE WINDOW	RAL 1005	...
M	OVERHEAD DOOR/OVERHEAD DOOR CORPORATION	PAINT	...
O	ALUM SLIDING DOOR	STD CASTLE "SAGE BROWN"	...
P	TV	CPD	BLOCKING BY GC
Q	CONCRETE COUNTER	CONCRETE COUNTER, TRILEFORM CONCRETE COLOR, CONCRETE WITH SEALER GTFE	...
R	CMU SCREEN WALL	SW 7570 "TIGER" WHITE	...
S	HOLLOW METAL DOUBLE DOOR	SW 7570 "TIGER" WHITE AT STONE / SW2823 "ROCKWOOD CLAY" AT NICHIA	...
T	FOLDING SECURITY CLOSURE / MOBILFLEX	CLEAR, ANODIZED	...
U	SHRINE	BY OWNER	...
V	BAR (IF WALL)	BY AQUATICS	...
W	FELLOW ELECTRIC DRINKING FOUNTAIN	SEE PLUMBING	...
X	LOCKERS	BY AQUATICS	...
Z	CAST STONE SILL
AA	FOOD SERVICE EQUIPMENT	SEE FOOD SERVICE	...
BB	DIGITAL MENU DISPLAY	BY OWNER	...





NORTH ELEVATION - B1

SCALE: 1/4" = 1'-0"



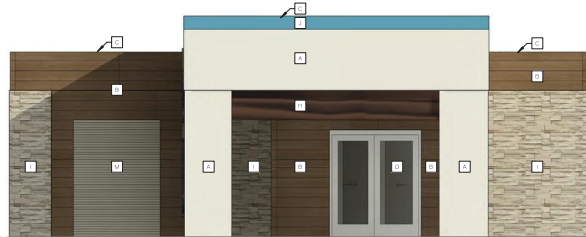
BUILDING B - PERSPECTIVE VIEW

NOT TO SCALE



EAST ELEVATION - B2

SCALE: 1/4" = 1'-0"



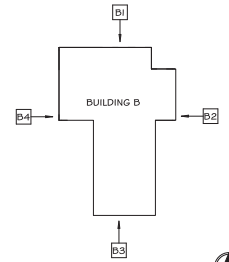
SOUTH ELEVATION - B3

SCALE: 1/4" = 1'-0"



WEST ELEVATION - B2

SCALE: 1/4" = 1'-0"



KEY PLAN





NORTH ELEVATION - C1

SCALE: 1/4" = 1'-0"



BUILDING C - PERSPECTIVE VIEW

NOT TO SCALE



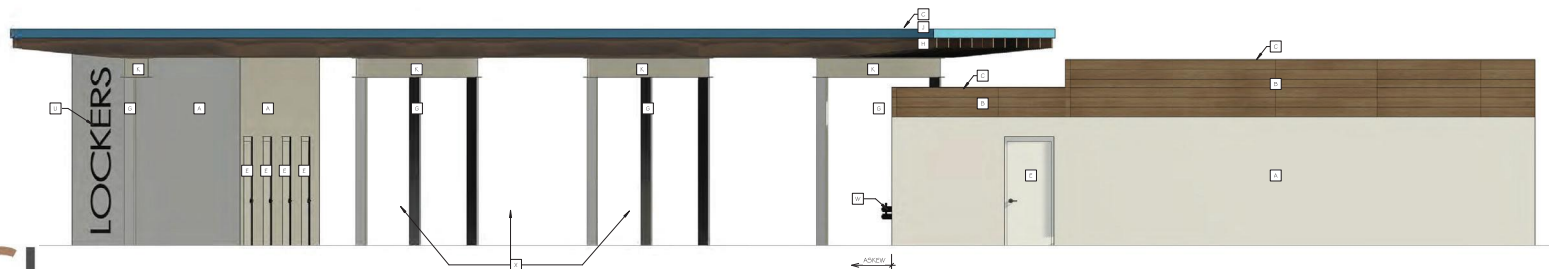
EAST ELEVATION - C2

SCALE: 1/4" = 1'-0"



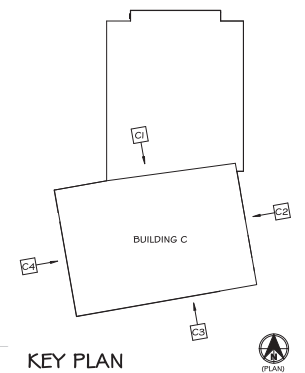
SOUTH ELEVATION - C3

SCALE: 1/4" = 1'-0"



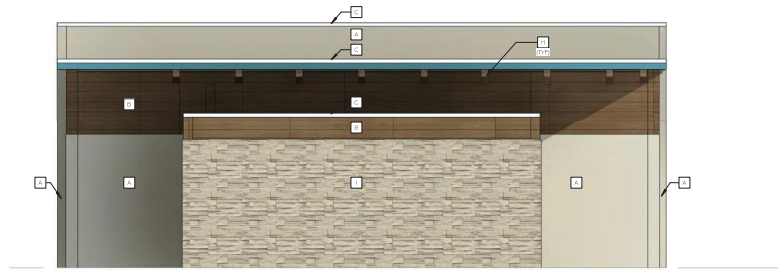
WEST ELEVATION - C4

SCALE: 1/4" = 1'-0"



KEY PLAN





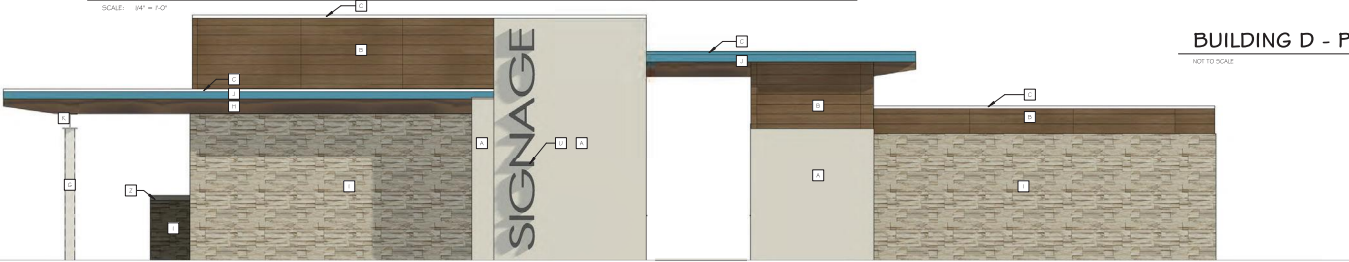
NORTH ELEVATION - D1

SCALE: 1/4" = 1'-0"



BUILDING D - PERSPECTIVE VIEW

NOT TO SCALE



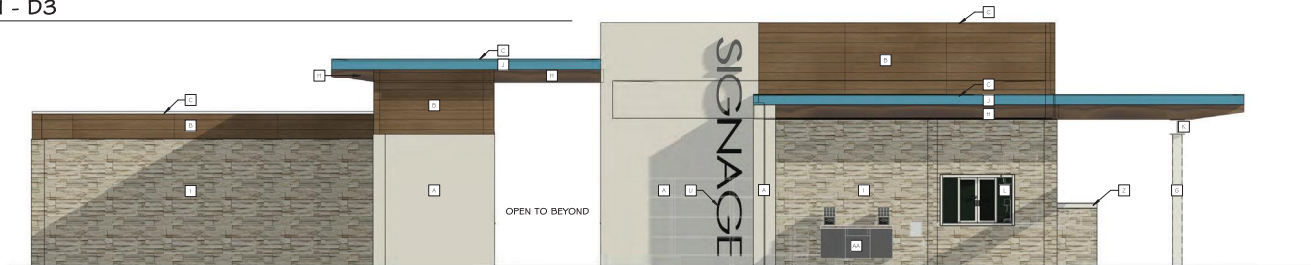
EAST ELEVATION - D2

SCALE: 1/4" = 1'-0"



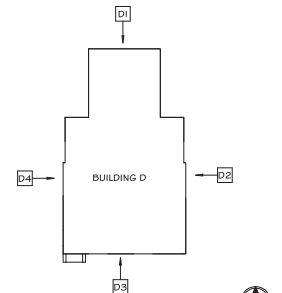
SOUTH ELEVATION - D3

SCALE: 1/4" = 1'-0"



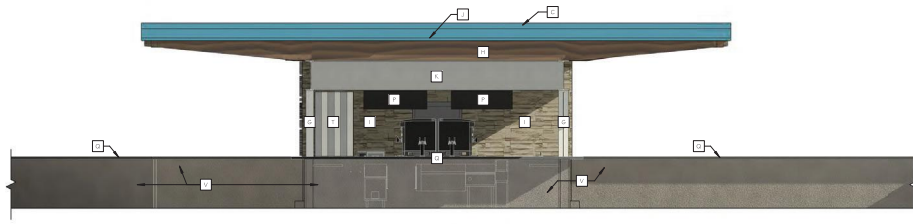
WEST ELEVATION - D4

SCALE: 1/4" = 1'-0"



KEY PLAN





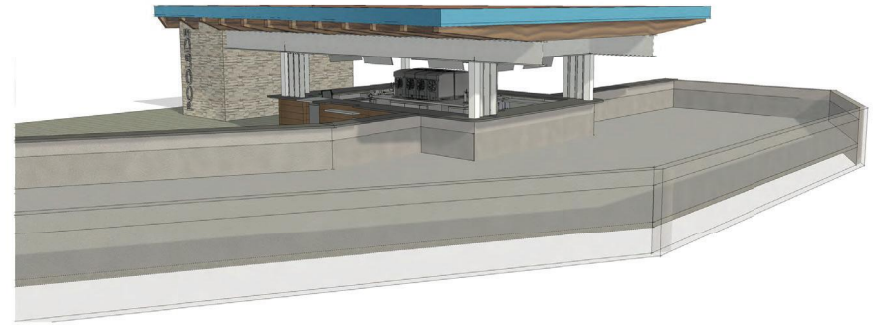
NORTH ELEVATION - E1

SCALE: 1/4" = 1'-0"



EAST ELEVATION - E2

SCALE: 1/4" = 1'-0"



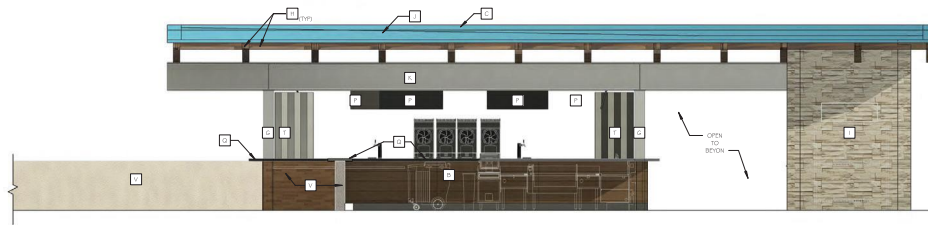
BUILDING E - PERSPECTIVE VIEW

NOT TO SCALE



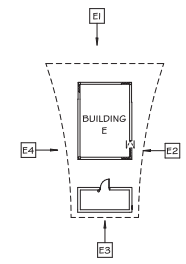
NORTH ELEVATION - E3

SCALE: 1/4" = 1'-0"



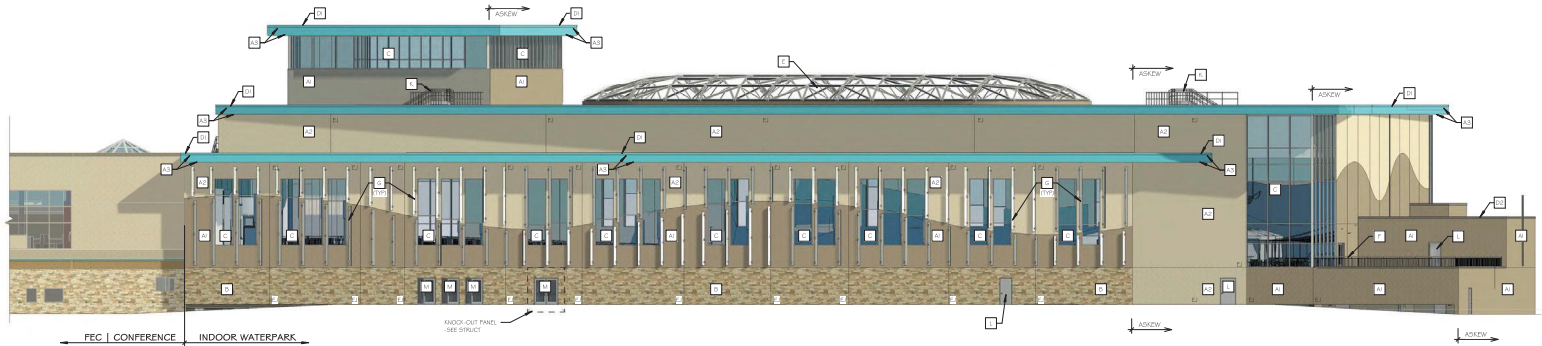
WEST ELEVATION - E4

SCALE: 1/4" = 1'-0"



KEY PLAN

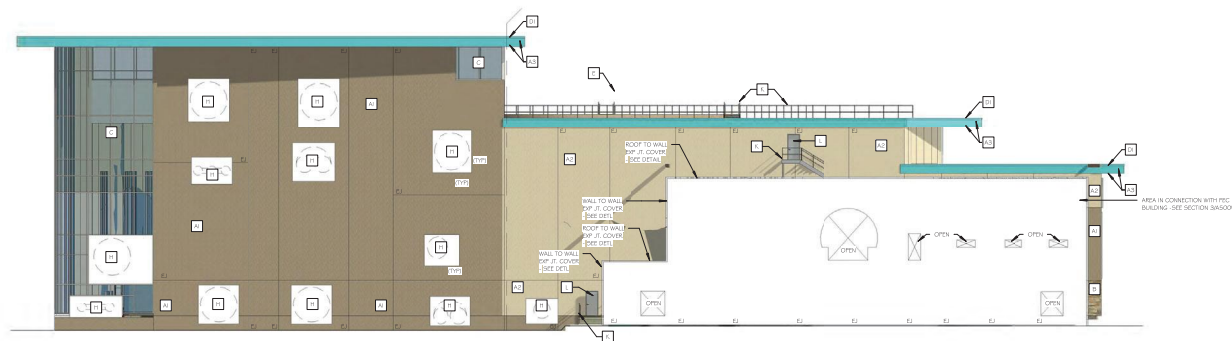




WEST ELEVATION - A

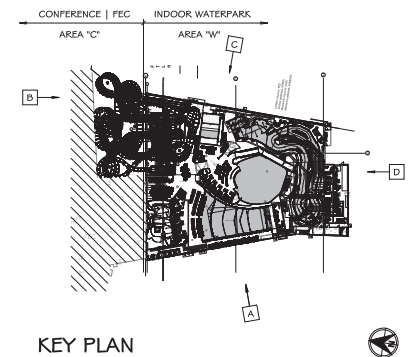
SCALE: 1/8" = 1'-0"

ROW	MATERIAL / MANUFACTURER	DESCRIPTION / COLOR	NOTES
A1	EPS / DRIVEIT	SW 2620 "DOWNING EARTH"	FINISH "QUARTZPUTZ"
A2	EPS / DRIVEIT	SW 7506 "LOGGAY"	FINISH "QUARTZPUTZ"
A3	EPS / DRIVEIT	SW 6775 "BROWN"	FINISH "LIMESTONE"
B	STONE VENEER (ADHERED) / BLUE BIRD STONE QUARRY	KEOTA BLUE / BROWN CUT	---
C	ALUM. CURTAIN WALL / OLD CASTLE	CHAMPAGNE 659 LIGHT RANGE	SEE SCHEDULE FOR GLAZING TYPES
D1	PREFINISHED ALUMINUM COPING	COLOR MATCH SW 8775 "BROWN"	---
D2	PREFINISHED ALUMINUM COPING	COLOR MATCH SW 2620 "DOWNING EARTH"	---
E	ETFE INSULATED STRUCTURE / NOVOLUX	PEARL KAL 9035 "TRANSIT WHITE"	---
F	ALUMINUM PICKET RAILING SYSTEM / STERLING BOLA	POWDER COAT - KAL 0335 "PEARL BEIGE"	---
G	ALUMINUM SUNSHADE / CS SPECIALTIES	---	INTEGRAL COLOR CHANGING LED LIGHTING BLUX EVERY THIRD PNL
H	EPS / DRIVEIT	COLOR MATCH ADJACENT FINISH	REFILL PANEL @ SLIDE PENETRATION
J1	EPS / DRIVEIT	COLOR MATCH PMS 740	LOGO 4 LETTERS INSCRIBED 4" PROJECTING UP TO 4" THICKNESS
J2	EPS / DRIVEIT	COLOR MATCH PMS 7429	LOGO 4 LETTERS INSCRIBED 4" PROJECTING UP TO 4" THICKNESS
J3	EPS / DRIVEIT	COLOR MATCH PMS 7466	LOGO 4 LETTERS INSCRIBED 4" PROJECTING UP TO 4" THICKNESS
J4	EPS / DRIVEIT	COLOR MATCH PMS 7745	LOGO 4 LETTERS INSCRIBED 4" PROJECTING UP TO 4" THICKNESS
K	SAFETY GUARDSRAIL	COLOR TBS	---
L	HOLLOW METAL DOOR	COLOR MATCH ADJACENT FINISH	---
M	ALUMINUM DOOR / OLD CASTLE	CHAMPAGNE 659 LIGHT RANGE	SEE SCHEDULE FOR GLAZING TYPES
N	OVERHEAD GLAZING DOOR / OVERHEAD DOOR CORPORATION	TAN	---
P	VERTICAL LIFT SECTIONAL DOOR / OVERHEAD DOOR CORPORATION	TAN	---

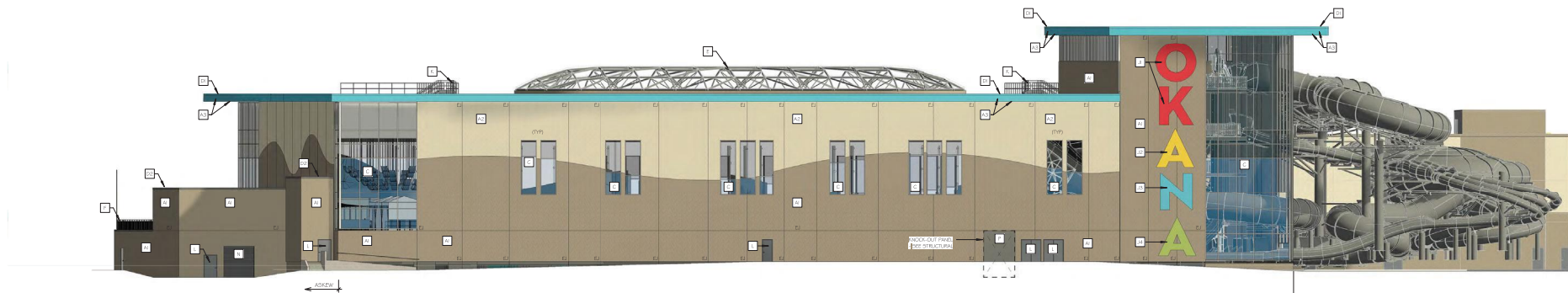


NORTH ELEVATION - B

SCALE: 1/8" = 1'-0"



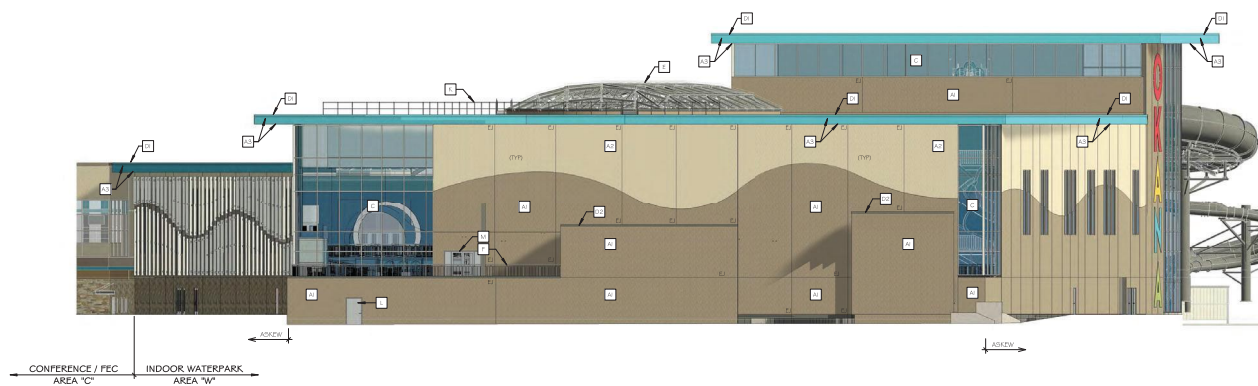
KEY PLAN



EAST ELEVATION - C

SCALE: 1/8" = 1'-0"

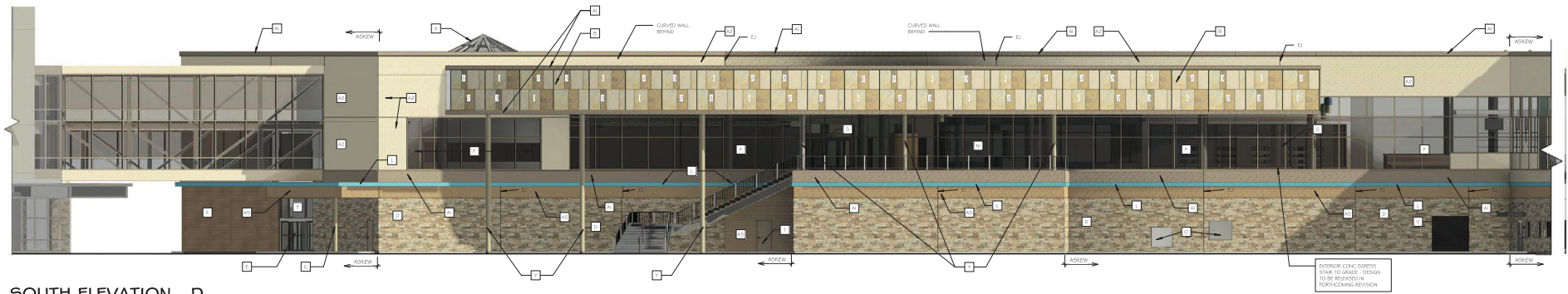
INDOOR WATERPARK
AREA "W" CONFERENCE / FEC
AREA "C"



SOUTH ELEVATION - D

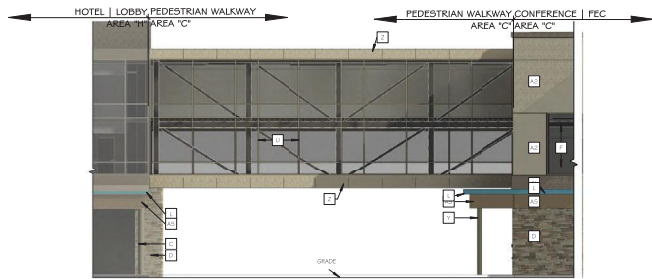
SCALE: 1/8" = 1'-0"

CONFERENCE / FEC
AREA "C" INDOOR WATERPARK
AREA "W"



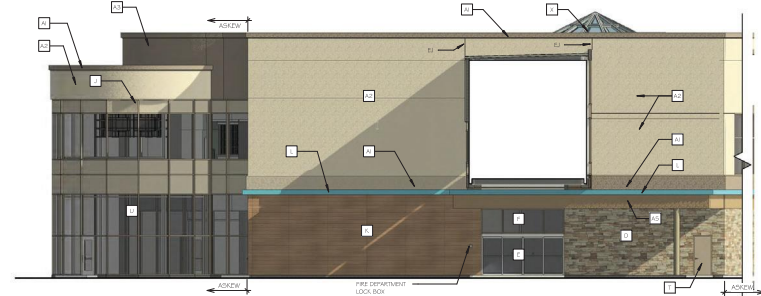
SOUTH ELEVATION - D

SCALE: 3/32" = 1'-0"



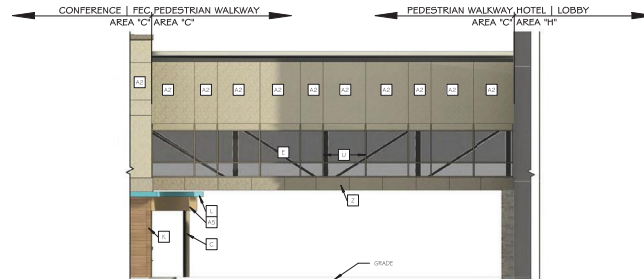
SOUTH ELEVATION - E

SCALE: 3/32" = 1'-0"



WEST ELEVATION - F

SCALE: 3/32" = 1'-0"



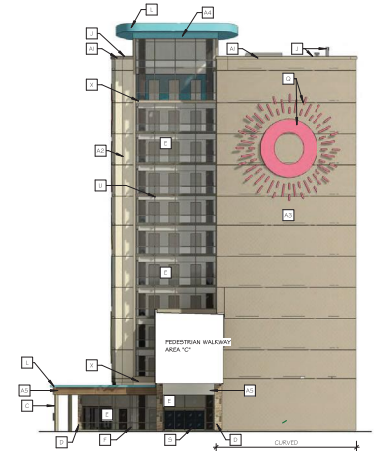
ELEVATION G

SCALE: 3/32" = 1'-0"



NORTH ELEVATION - A

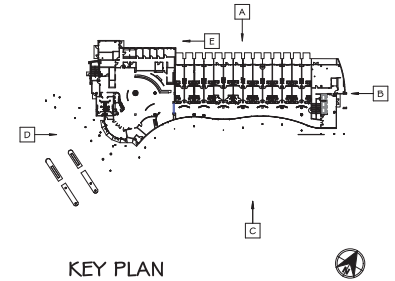
SCALE: 1" = 20'-0"



EAST ELEVATION - B

SCALE: 1" = 20'-0"

BOX	MATERIAL / MANUFACTURER	DESCRIPTION / COLOR	NOTES
A1	EPS (BANDING) / DRYVIT	SW 2850 DOWNING EARTH (1/2" THICK)	FINISH - LIMESTONE
A2	EPS / DRYVIT	SW 7506 LOGGIA (1/2" THICK)	FINISH - QUARTZPUZZ
A3	EPS / DRYVIT	SW 2850 DOWNING EARTH (1/2" THICK)	FINISH - QUARTZPUZZ
A4	EPS / DRYVIT	SW 6775 BRIM (1/2" THICK)	FINISH - QUARTZPUZZ
A5	EPS / DRYVIT	SW 2853 ROCKWOOD CLAY (1/2" THICK)	FINISH - LIMESTONE W/ HORIZONTAL V-GROOVE
A6	EPS / DRYVIT	SW 2850 DOWNING EARTH (1/2" THICK)	FINISH - QUARTZPUZZ
A7	EPS / DRYVIT	SW 7506 LOGGIA (1/2" THICK)	FINISH - QUARTZPUZZ
B	EPS PANEL / TRESPA	NATURALS' NM03, NM04, NA2	SEE EXPANDED ELEVATIONS SHEET A4.03H
C	PROTEA COLUMN COVER	COLOR TBD	---
D	STONE VENEER (ADHERED) / BLUE BIRD STONE QUARRY	NEOTA BLUEBERRY/CUT	---
E	ALUM ALUMINUM DOOR	MATCH ALUM STOREFRONT	SEE SCHED FOR GLAZING TYPE
F	ALUM STOREFRONT WINDOW / OLD CASTLE	CHAMPAGNE 699 LIGHT RANGE	SEE SCHED FOR GLAZING TYPE
G	ALUM WINDOW / OLD CASTLE	CHAMPAGNE 699 LIGHT RANGE	SEE SCHED FOR GLAZING TYPE
H	TRAMPIC COATING / THERMO	ECO 1066H	---
I	STEEL FRAMEWORK	PAIN'T TBD	---
J	ALUM COPIING	PREFINISHED - COLOR TBD	---
K	FIBER CEMENT GLAZING / NORITKA	VINTAGE WOOD 'CEDAR'	---
L	ALUM COMPOSIT PANEL (ACM) / ALUCOROND	THE SPECTRA COLLECTION 'OCEAN'	---
M	ALUMINUM COLUMN W/ ALUMINUM SCREEN (1/4" THICK) / PARASOLEL PRIVACY SCREEN	COLOR TBD	POWDER COATED METAL - COLOR TBD
N	ALUM PICKET RAILING / STERLING DULA	POWDERCOAT 6355 - PEARLBIDGE	---
O	DOORS	PAINT TO MATCH ADJACENT	---
P	EPS / DRYVIT	SW 2853 ROCKWOOD CLAY	---
Q	SIGNAGE LIGHTED CHANNEL LETTERS (OPO)	LOGO - MULTIPLE COLORS	BLOCKING / SIGN SUPPORT BY G.C.
R	SIGNAGE LIGHTED CHANNEL LETTERS (OPO)	COLOR TBD	BLOCKING / SIGN SUPPORT BY G.C.
S	ALUM DOOR / OLD CASTLE	CHAMPAGNE 699 LIGHT RANGE	SEE SCHED FOR GLAZING TYPE
T	INDLOW METAL DOOR	COLOR TBD	SEE SCHED FOR GLAZING TYPE
U	ALUM CURTAIN WALL WINDOW / OLD CASTLE	CHAMPAGNE 699 LIGHT RANGE	SEE SCHED FOR GLAZING TYPE
V	COLOR CONCRETE	COLOR TBD	---
W	PREFINISHED METAL ENCLOSURE	PAINT TO MATCH	---
X	ALUM COMPOSIT PANEL (ACM) / ALUCOROND	CHAMPAGNE ANOUCED	---



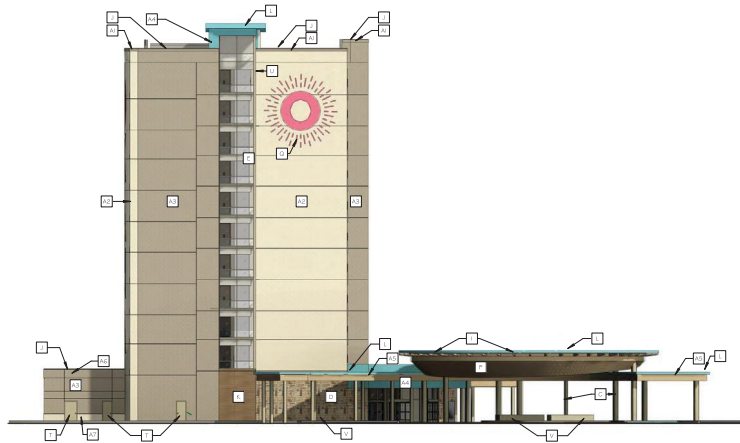
KEY PLAN





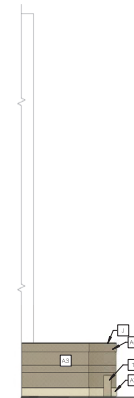
SOUTH ELEVATION - C

SCALE: 1" = 20'-0"



WEST ELEVATION - D

SCALE: 1" = 20'-0"



EAST ELEVATION - E

SCALE: 1" = 20'-0"