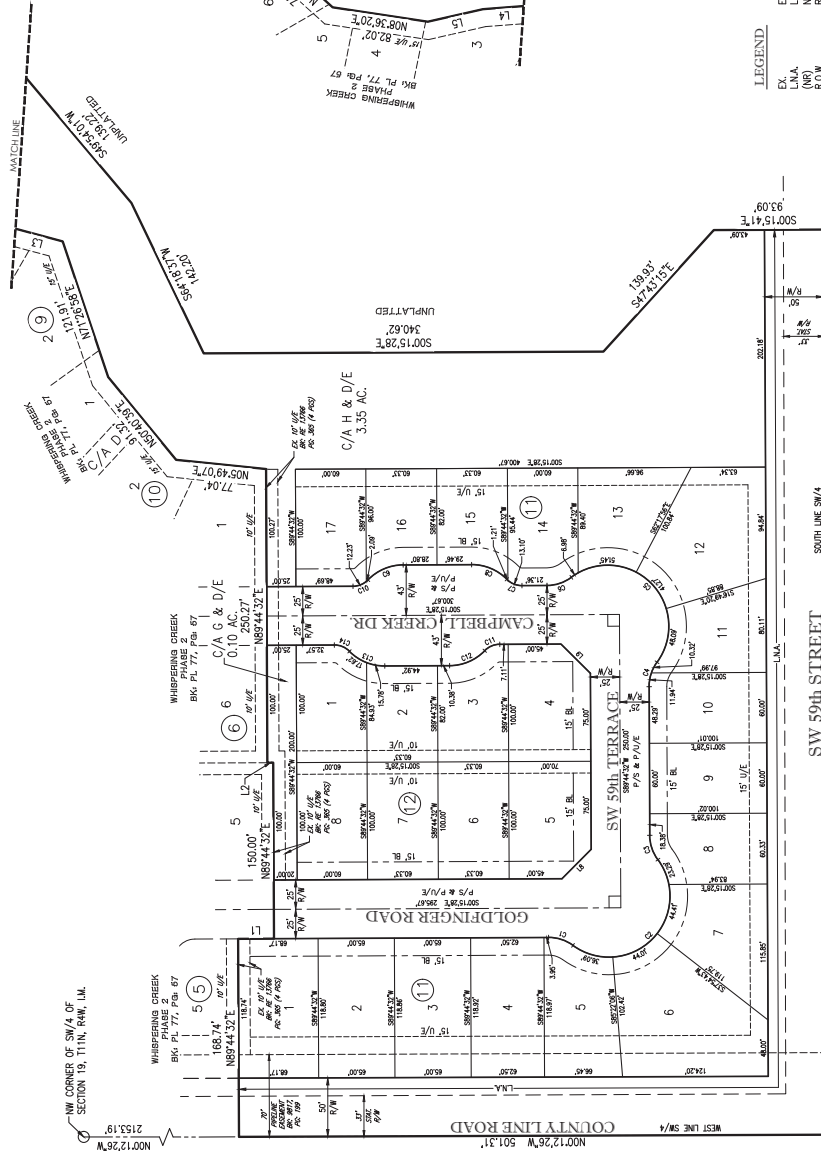
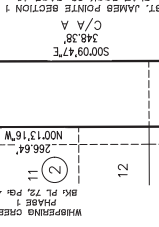
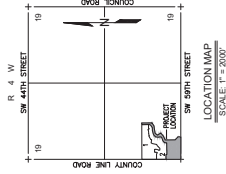
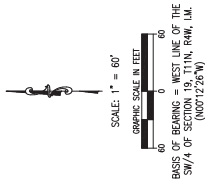


FINAL PLAT  
OF  
WHISPERING CREEK  
PHASE 3  
A PART OF THE SW/4 OF SECTION 19, T11N, R4W, I.M.  
OKLAHOMA CITY, OKLAHOMA COUNTY, OKLAHOMA

LINE TABLE		
LINE #	LENGTH	DIRECTION
L1	30.61"	S00° 15' 28"E
L2	5.60"	N02° 15' 28"W
L3	41.67"	N15° 00' 43"E
L4	34.99"	N04° 20' 17"W
L5	48.18"	N12° 48' 22"W
L6	48.14"	N26° 57' 02"E
L7	43.18"	N23° 35' 11"E
L8	35.36"	N45° 15' 28"W
L9	35.36"	N44° 44' 32"E

CURVE TABLE					CHORD LENGTH
CURVE #	LENGTH	RADIUS	DELTA	CHORD DIRECTION	
C1	22.57	35.00	104.57	N17° 57' 37E	21.86
C2	14.80	52.00	167.75	S46° 15' 45E	10.84
C3	22.57	35.00	104.57	S71° 31' 40W	21.86
C4	22.57	35.00	104.57	N67° 02' 37W	21.86
C5	14.80	52.00	167.75	N44° 44' 35E	10.84
C6	22.57	35.00	104.57	S52° 38' 25E	21.86
C7	14.82	18.00	105.24	S32° 14' 53E	13.84
C8	14.82	18.00	105.24	N25° 16' 52E	13.84
C9	14.82	18.00	105.24	N61° 02' 52E	13.84
C10	14.82	18.00	105.24	S22° 02' 40E	13.84
C11	14.82	18.00	105.24	S22° 02' 40E	13.84
C12	34.47	42.00	165.72	S27° 32' 40E	32.57
C13	34.47	42.00	165.72	N27° 31' 45E	32.57
C14	14.87	18.00	105.27	N62° 31' 45E	13.84



## ADDRESSES

NOTES

1. This list of survey means the Minimum Standards for the Practice of Land Surveying as adopted by the Alabama State Board of Licensure for Professional Engineers and Land Surveyors and that said First Part complies with the requirements of Title 11, Section 41-108 of the Code of Alabama.
2. Instruments shall be as follows:
  - a. A transit or theodolite with a stadia rod.
  - b. A plane table with a stadia rod.
  - c. A transit or theodolite with a stadia rod.
  - d. A transit or theodolite with a stadia rod.
  - e. A transit or theodolite with a stadia rod.
  - f. A transit or theodolite with a stadia rod.
  - g. A transit or theodolite with a stadia rod.
  - h. A transit or theodolite with a stadia rod.
  - i. A transit or theodolite with a stadia rod.
  - j. A transit or theodolite with a stadia rod.
  - k. A transit or theodolite with a stadia rod.
  - l. A transit or theodolite with a stadia rod.
  - m. A transit or theodolite with a stadia rod.
  - n. A transit or theodolite with a stadia rod.
  - o. A transit or theodolite with a stadia rod.
  - p. A transit or theodolite with a stadia rod.
  - q. A transit or theodolite with a stadia rod.
  - r. A transit or theodolite with a stadia rod.
  - s. A transit or theodolite with a stadia rod.
  - t. A transit or theodolite with a stadia rod.
  - u. A transit or theodolite with a stadia rod.
  - v. A transit or theodolite with a stadia rod.
  - w. A transit or theodolite with a stadia rod.
  - x. A transit or theodolite with a stadia rod.
  - y. A transit or theodolite with a stadia rod.
  - z. A transit or theodolite with a stadia rod.
3. Measurements of the Curves Area and Inside Radius of a Public Right-of-Way shall be the responsibility of the Property Owner and/or Property Owners Association. No structure, storage of materials, grading, fill, or other obstructions, either temporary or permanent shall be placed within the Right-of-Way. The survey shall be made by a person or persons who are duly licensed and limited to, less, bonus, prize, and docks, shall be permitted if installed in a manner to meet the requirements specified above.
4. A sidewalk is required on each lot where it abuts a local road or a collector street. The sidewalk is required by the Building Permit. Stone and must be installed prior to the issuance of a Certificate of Occupancy from the City of Dothan City for the applicable lot.
5. The lot's curb gutter extends over one 3-inch colder trench, shall be installed in the front yard of the lot. The lot's curb gutter extends over the front yard, shall be installed in the front yard of the street.

FY

EX.	EXISTING
L.N.A.	LIMITS OF NO ACCESS
(NR)	NONRADIAL LINE
R.O.W.	RIGHT-OF-WAY
U/E	UTILITY EASEMENT
P/D/E	PRIVATE DRAINAGE EASEMENT
P/S & P/U/E	PRIVATE STREET AND UTILITY EASEMENT

### FINAL PLAT WHISPERING CREEK PHASE 3



**Crafton Tull**  
architecture | engineering | surveying

SHEET NO.: 2 OF 2  
DATE: 11/11/20  
PROJECT NO.: 226093

CERTIFICATE OF AUTHORIZATION  
CA #000011198867 ACT00000

### TYPICAL BLOCK CORNER