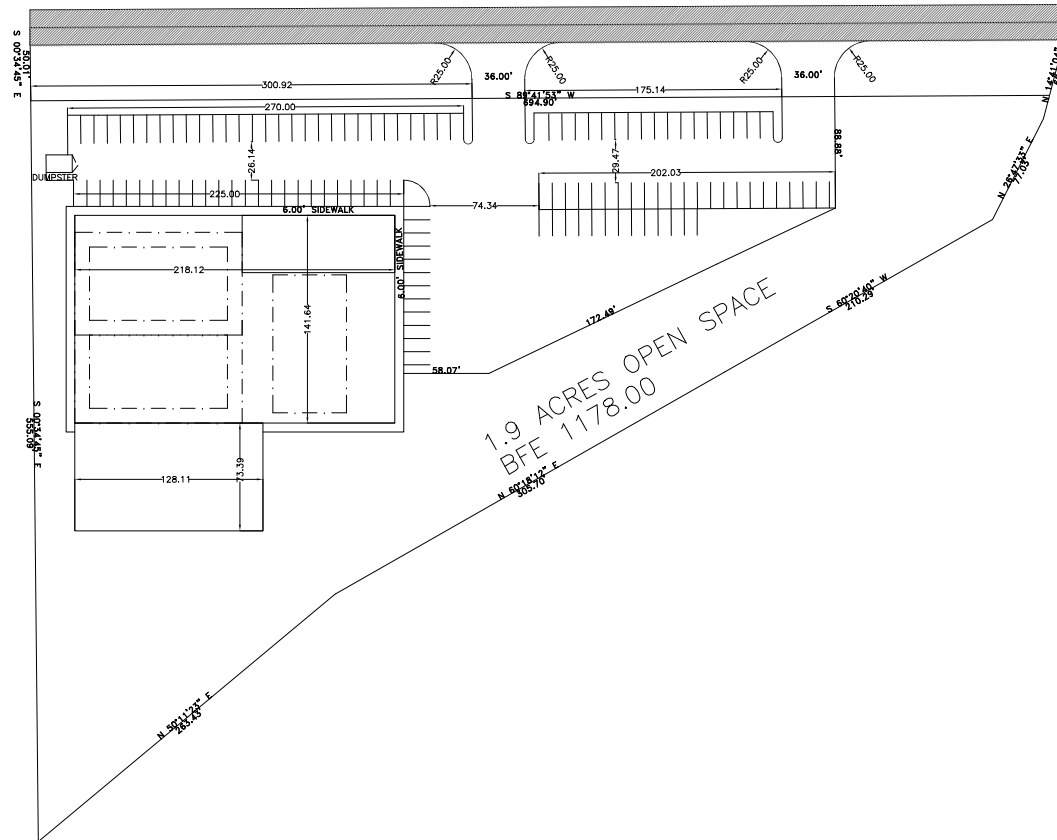


SW. 149TH ST



CITY OF OKLAHOMA CITY



LEGEND

—S—	SANITARY SEWER LINE
—W—	WATER LINE
—OE—	OVERHEAD ELECTRIC
—G—	EXISTING GAS SERVICE
—S—	SANITARY SEWER MANHOLE
—S—	STORM SEWER MANHOLE
—P—	POWER POLE
—G—	GUY AND/OR
—L—	LIGHT POLE
—F—	FIRE HYDRANT
—V—	WATER VALVE
—M—	WATER METER
—G—	GAS VALVE
—M—	GAS METER
—E—	ELECTRIC METER
—T—	TELEPHONE PEDESTAL
—M—	MONITOR WELL
—S—	SIGN
—T—	TRAFFIC SIGNAL POLE
—T—	TRAFFIC SIGNAL BOX
—F—	FENCE
—B—	SET BACK
—B—	FOUND BENCHMARK
—B—	BENCHMARK

MASTER DEVELOPMENT PLAN
TO SERVE
HOUSE OF POWER
BEING A PART OF THE NE1/4, SEC. 29, T10N, R3W, IM.
CITY OF OKLAHOMA CITY, OKLAHOMA COUNTY, OKLAHOMA

MORRIS
ENGINEERING & ARCHITECTS, P.C.
www.morrisengineering.com
617 N.W. 27TH ST., SUITE 200, OKLAHOMA CITY, OK 73105
(405) 512-2775 OFFICE (405) 512-2022 FAX



DATE	
REVISION	
MASTER DEVELOPMENT PLAN TO SERVE HOUSE OF POWER	
REVISION	
REF. NO.	REF. NO.
SHEET NO. 1	OF 1