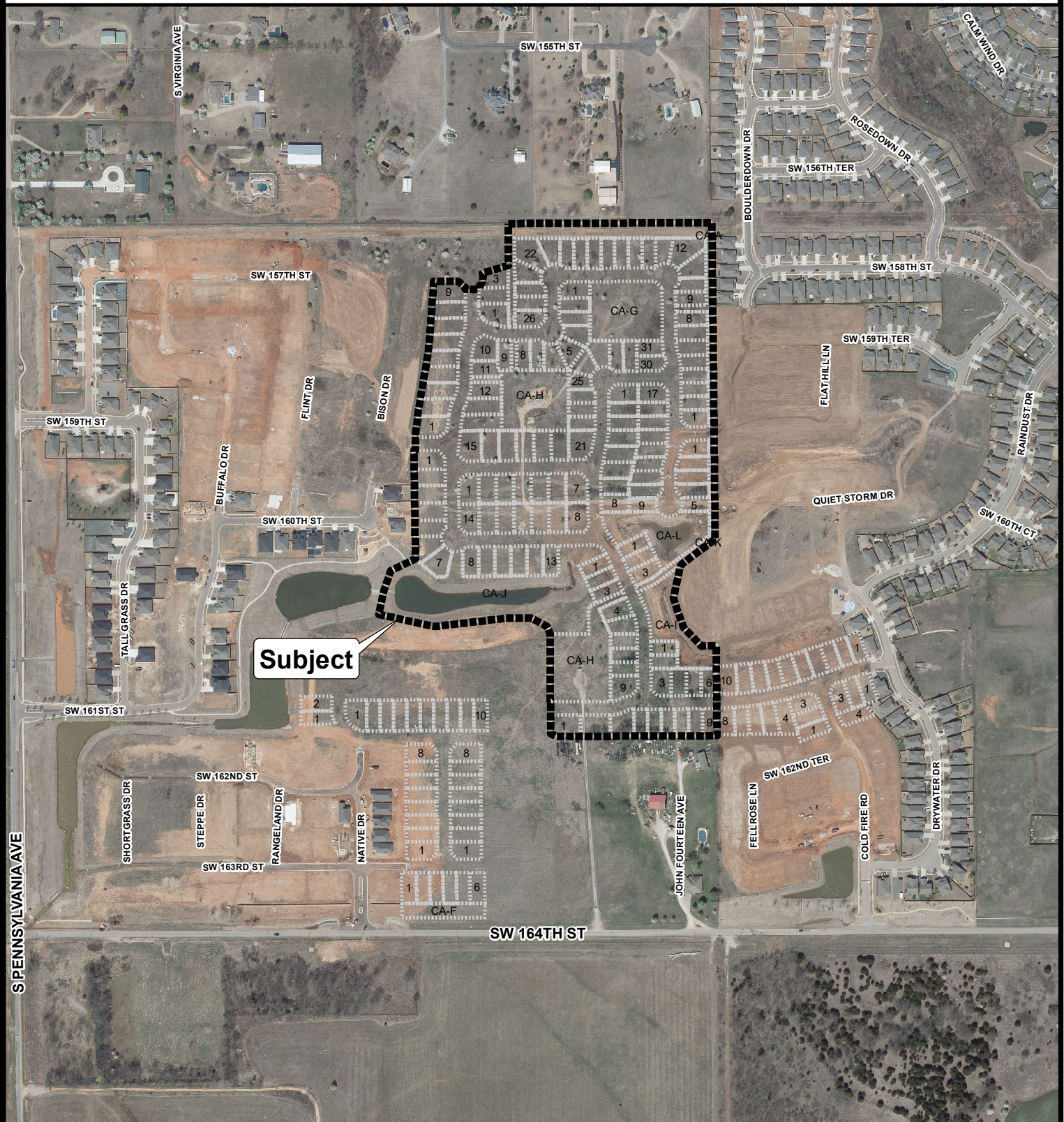


**Case No: C-7486      Final Plat of Native Plains Addition Section 5**  
**Developer: Sweetgrass Partners, LLC**  
**Engineer: SMC Consulting Engineers, P.C.**



*Aerial Photo from 2/2020*



The City of  
OKLAHOMA CITY

# Final Plat Application



0 250 500 Feet