

PRELIMINARY PLAT
THE RESERVE AT MUSTANG CREEK
A PLANNED UNIT DEVELOPMENT
A PART OF THE N.W. 1/4 OF SECTION 10, T11N, R5W, I.M.
OKLAHOMA CITY, CANADIAN COUNTY, OKLAHOMA

LEGAL DESCRIPTION

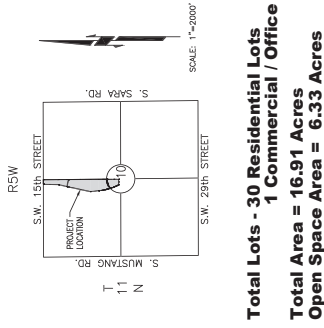
A strip, share or parcel of land lying in part of the NW 1/4 of Section 10, T11N, R5W, I.M., Canadian County, Oklahoma, and parcel of land being described by metes and bounds as follows:

COMMENCING at the NE corner of said NW 1/4,
THENCE S 0°22'27" E along the East line of said NW 1/4 a distance of 63.07 feet to a point on the
right-of-way line of the John H. Roper Complex,
THENCE S 0°22'27" E along said East line a distance of 1,575.02 feet to a point on the
South line of said NW 1/4,
THENCE N 89°22'08" W along said South line a distance of 186.17 feet to a point on the permanent East
right-of-way line of the John H. Roper Complex,
THENCE S 89°19'28" E along said right-of-way line a distance of 1,862.00 feet on arc distance
of 719.19 feet,
THENCE N 89°22'08" W along said right-of-way line a distance of 207.02 feet,
THENCE N 72°08'24" E along said right-of-way line a distance of 1,102.24 feet,
THENCE S 89°19'28" E along said right-of-way line a distance of 357.63 feet to a point on the
permanent South right-of-way line of SH 1205 Street,
THENCE S 89°19'28" E along said right-of-way line a distance of 148.48 feet to the point of beginning.
Said tract contains 16.91 Acres more or less.

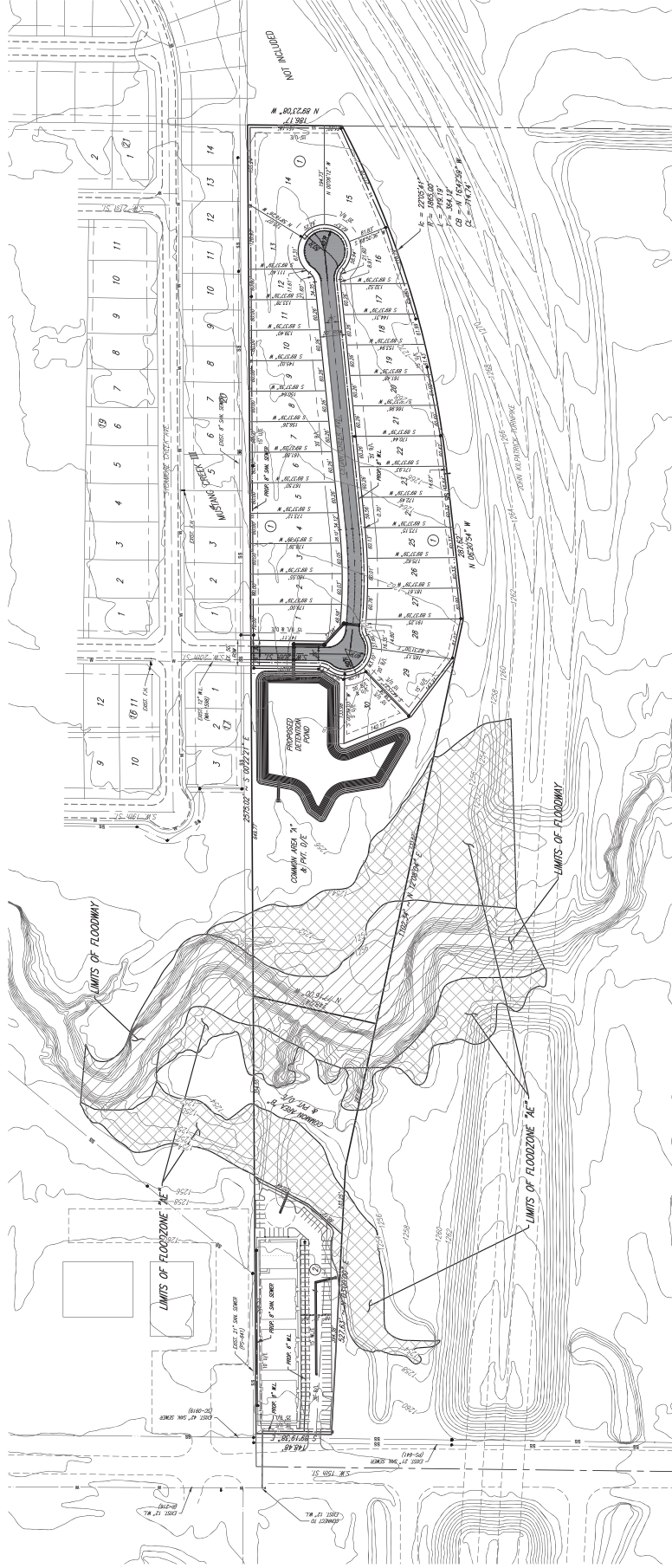
NOTES

1. ALL LOTS ARE TO BE CONVEYED TO THE CITY OF OKLAHOMA CITY.
2. EXISTING ZONING IS PLU-1.
3. ALL PUBLIC UTILITIES SHALL BE DESIGNED IN ACCORDANCE WITH THE CITY OF OKLAHOMA CITY STANDARDS.
4. ALL STREETS SHALL BE DESIGNED IN ACCORDANCE WITH THE CITY OF OKLAHOMA CITY STANDARDS.
5. ALL PUBLIC UTILITIES SHALL BE IN ACCORDANCE WITH THE CITY OF OKLAHOMA CITY STANDARDS.
6. ALL SANITARY SEWER LINES TO BE 6" DIA. UNLESS NOTED OTHERWISE.
7. ALL WATER LINES TO BE 6" DIA. UNLESS NOTED OTHERWISE.
8. FIRE LINES TO BE 6" DIA. UNLESS NOTED OTHERWISE.

9. ALL LOTS ARE TO BE CONVEYED TO THE CITY OF OKLAHOMA CITY.
10. ALL LOTS ARE TO BE CONVEYED TO THE CITY OF OKLAHOMA CITY.
11. ALL LOTS ARE TO BE CONVEYED TO THE CITY OF OKLAHOMA CITY.
12. ALL LOTS ARE TO BE CONVEYED TO THE CITY OF OKLAHOMA CITY.
13. ALL LOTS ARE TO BE CONVEYED TO THE CITY OF OKLAHOMA CITY.
14. ALL LOTS ARE TO BE CONVEYED TO THE CITY OF OKLAHOMA CITY.



Total Lots - 30 Residential Lots
1 Commercial / Office
Total Area = 16.91 Acres
Open Space Area = 6.33 Acres



THE RESERVE AT MUSTANG CREEK
S.W. 15th St. & Kilpatrick Turnpike
Oklahoma City, Oklahoma



S.W. 15th St. & Kilpatrick Turnpike
Oklahoma City, Oklahoma

Preliminary Plat