

FINAL PLAT OAK ADDITION

A REPLAT OF BLOCKS 1 AND 8, QUEEN'S HIGHWAY, BLOCKS 1 AND 2, A PART OF BLOCKS 3 AND 9, WILKMAN FOURTH ADDITION, AND PARTS OF N. BARNES AVENUE, N.W. 49TH STREET, N.W. 50TH STREET, N.W. 52ND STREET AND PART OF THE SOUTHEAST QUARTER OF SECTION 7, T. 12 N., R. 3 W. ALL LYING IN THE SOUTHEAST QUARTER OF SECTION 7, T. 12 N., R. 3 W. AND IN THE NORTHEAST QUARTER OF SECTION 18, T. 12 N., R. 3 W. OF THE INDIAN MERIDIAN, OKLAHOMA COUNTY, OKLAHOMA

NOTES:

1. The Oklahoma State Plane Coordinate System (NAD83 - North Zone) using a bearing of South Quarter of Section 18, Township 12 North, Range 3 West of the Indian Meridian was used as the basis of bearings for this plat.
2. Easements shown herein by specific recording information are shown for informational purposes only and are not indicated as a part of this plat.
3. The unit of measurement shown for all dimensions on the first plat is feet.

LOT AREA TABLE			
BLOCK	LOT	SQUARE FEET	ACRES
1	1	24,050	0.55
1	2	28,706	0.66
1	3	16,277	0.37
1	4	217,684	5.00
1	5	59,518	1.34
1	CA A	39,701	0.91
2	1	111,169	2.55
3	1	159,378	3.66
ROW		71,427	1.64
TOTAL		726,930	16.69

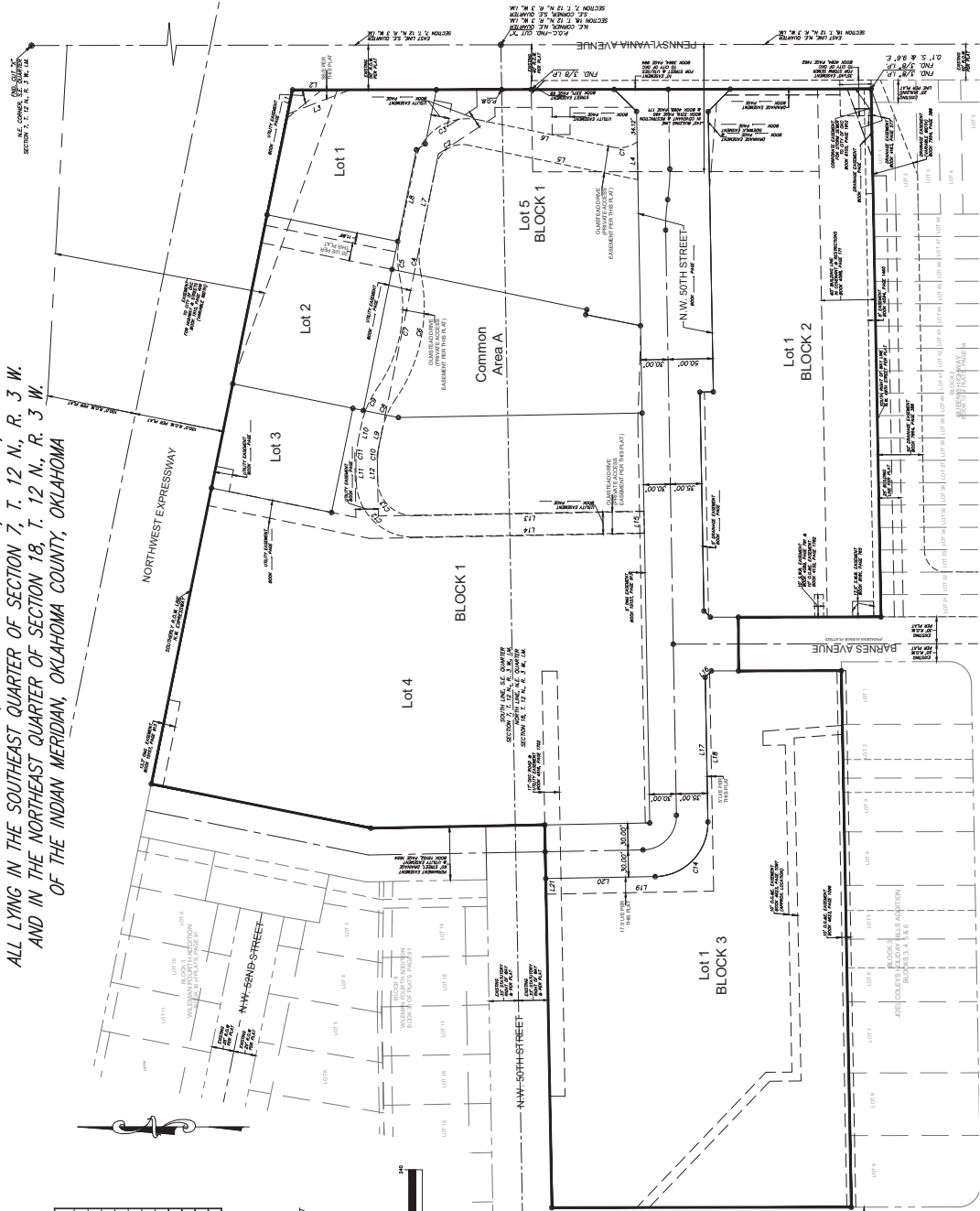
A REPLAT OF BLOCKS 1 AND 8, QUEEN'S HIGHWAY, BLOCKS 1 AND 2,
A PART OF BLOCKS 3 AND 9, WILEMAN FOURTH ADDITION,
AND PARTS OF N. BARNES AVENUE, N.W. 49TH STREET, N.W. 50TH STREET, N.W. 52ND STREET
AND PART OF THE SOUTHEAST QUARTER OF SECTION 7, T. 12 N., R. 3 W.
ALL LYING IN THE SOUTHEAST QUARTER OF SECTION 7, T. 12 N., R. 3 W.
AND IN THE NORTHEAST QUARTER OF SECTION 18, T. 12 N., R. 3 W.
OF THE INDIAN MERIDIAN, OKLAHOMA COUNTY, —

1. The Oklahoma State Plane Coordinate System (NAD83 - North Zone) using a bearing of $88^{\circ}59'32''$ West on the common line between the Southeast Quarter of Section 7 and the Northwest Quarter of Section 16, Township 12 North, Range 3 West of the Indian Meridian was used as the basis of bearings for this plat.
2. Elements shown herein by specific recording information are shown for informational purposes only and are not indicated as a part of this plat.
3. The unit of measurement shown for all dimensions on the final plat is feet.

LEGEND

U/E - UTILITY EASEMENT PER THIS PLAT
D/E - DRAINAGE EASEMENT PER THIS PLAT
M/E - WATERLINE EASEMENT PER THIS PLAT
S/E - SEWER EASEMENT PER THIS PLAT
S/E - SANITARY SEWER EASEMENT PER THIS PLAT
P/E - PORT OF ENTRY EASEMENT
P.O.B. - POINT OF BEGINNING

● - SET 1/2" IRON PIN WITH CAG6391 CAP
○ - SET 3/4" CAP NAIL WITH CAG6391 PIN



Curve #	Posix	Length	Onix	Tonglet	Over Length
C1	35.007	28.381	4672732	15.02	S 123942 E 2761
C2	35.007	28.381	4672938	15.02	S 123942 E 2761
C3	35.007	28.381	4673144	15.02	S 123942 E 2761
C4	35.007	28.381	4673350	15.02	S 123942 E 2761
C5	35.007	28.381	4673556	15.02	S 123942 E 2761
C6	35.007	28.381	4673762	15.02	S 123942 E 2761
C7	35.007	28.381	4673968	15.02	S 123942 E 2761
C8	35.007	28.381	4674174	15.02	S 123942 E 2761
C9	35.007	28.381	4674380	15.02	S 123942 E 2761
C10	35.007	28.381	4674586	15.02	S 123942 E 2761
C11	35.007	28.381	4674792	15.02	S 123942 E 2761
C12	35.007	28.381	4674998	15.02	S 123942 E 2761
C13	35.007	28.381	4675204	15.02	S 123942 E 2761
C14	35.007	28.381	4675410	15.02	S 123942 E 2761
C15	35.007	28.381	4675616	15.02	S 123942 E 2761
C16	35.007	28.381	4675822	15.02	S 123942 E 2761
C17	35.007	28.381	4676028	15.02	S 123942 E 2761
C18	35.007	28.381	4676234	15.02	S 123942 E 2761
C19	35.007	28.381	4676440	15.02	S 123942 E 2761
C20	35.007	28.381	4676646	15.02	S 123942 E 2761
C21	35.007	28.381	4676852	15.02	S 123942 E 2761
C22	35.007	28.381	4677058	15.02	S 123942 E 2761
C23	35.007	28.381	4677264	15.02	S 123942 E 2761
C24	35.007	28.381	4677470	15.02	S 123942 E 2761
C25	35.007	28.381	4677676	15.02	S 123942 E 2761
C26	35.007	28.381	4677882	15.02	S 123942 E 2761
C27	35.007	28.381	4678088	15.02	S 123942 E 2761
C28	35.007	28.381	4678294	15.02	S 123942 E 2761
C29	35.007	28.381	4678500	15.02	S 123942 E 2761
C30	35.007	28.381	4678706	15.02	S 123942 E 2761
C31	35.007	28.381	4678912	15.02	S 123942 E 2761
C32	35.007	28.381	4679118	15.02	S 123942 E 2761
C33	35.007	28.381	4679324	15.02	S 123942 E 2761
C34	35.007	28.381	4679530	15.02	S 123942 E 2761
C35	35.007	28.381	4679736	15.02	S 123942 E 2761
C36	35.007	28.381	4679942	15.02	S 123942 E 2761
C37	35.007	28.381	4680148	15.02	S 123942 E 2761
C38	35.007	28.381	4680354	15.02	S 123942 E 2761
C39	35.007	28.381	4680560	15.02	S 123942 E 2761
C40	35.007	28.381	4680766	15.02	S 123942 E 2761
C41	35.007	28.381	4680972	15.02	S 123942 E 2761
C42	35.007	28.381	4681178	15.02	S 123942 E 2761
C43	35.007	28.381	4681384	15.02	S 123942 E 2761
C44	35.007	28.381	4681590	15.02	S 123942 E 2761
C45	35.007	28.381	4681796	15.02	S 123942 E 2761
C46	35.007	28.381	4682002	15.02	S 123942 E 2761
C47	35.007	28.381	4682208	15.02	S 123942 E 2761
C48	35.007	28.381	4682414	15.02	S 123942 E 2761
C49	35.007	28.381	4682620	15.02	S 123942 E 2761
C50	35.007	28.381	4682826	15.02	S 123942 E 2761
C51	35.007	28.381	4683032	15.02	S 123942 E 2761
C52	35.007	28.381	4683238	15.02	S 123942 E 2761
C53	35.007	28.381	4683444	15.02	S 123942 E 2761
C54	35.007	28.381	4683650	15.02	S 123942 E 27

Date: September 8, 2022
SMC CONSULTING ENGINEERS, P.C.
815 W. Main Street
Oklahoma City, OK 73106
PH.: (405)232-7715
Oklahoma CA#464 Exp. 6-30-2023