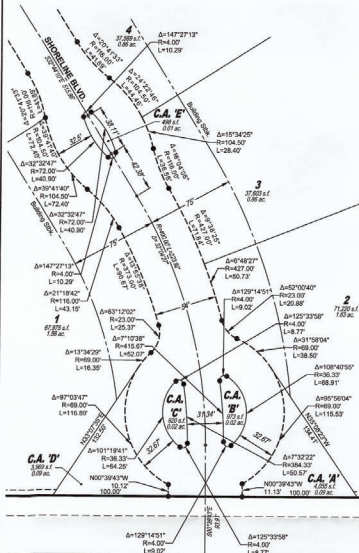
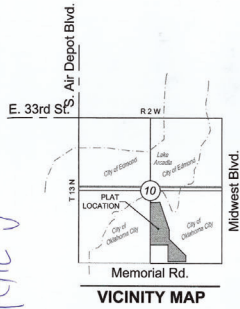


FINAL PLAT

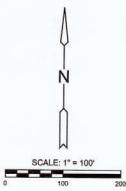
SHORELINE ADDITION

AN ADDITION TO OKLAHOMA CITY, OKLAHOMA COUNTY, OKLAHOMA
Lying in a portion of the Southeast Quarter, Section 10, Township 13 North, Range 2 West, Indian Meridian



ENTRY DETAIL

1" = 50'



Basis of Bearings: Oklahoma State Plane Coordinate system of 1983 North Zone bearing of S89°20'17"W on the South line of the Southeast Quarter, Section 10, Township 13 North, Range 2 West, Indian Meridian, Oklahoma County, Oklahoma, Verified with the City of Edmond Control Network, Monument STA 1086.

LEGEND

- △ - Section Corner (see annotation for type)
- - Found monument (see annotation for type)
- - Set monument (see annotation for type)
- ⊕ - Benchmark
- (M) - Measured
- (D) - Described
- (CM) - Calculated from Measured
- (CD) - Calculated from Described
- Lot
- Block
- Private Street, Drainage, Access, and Public Utility Easement
- FEMA 100 YR. Floodplain
- FEMA Floodway

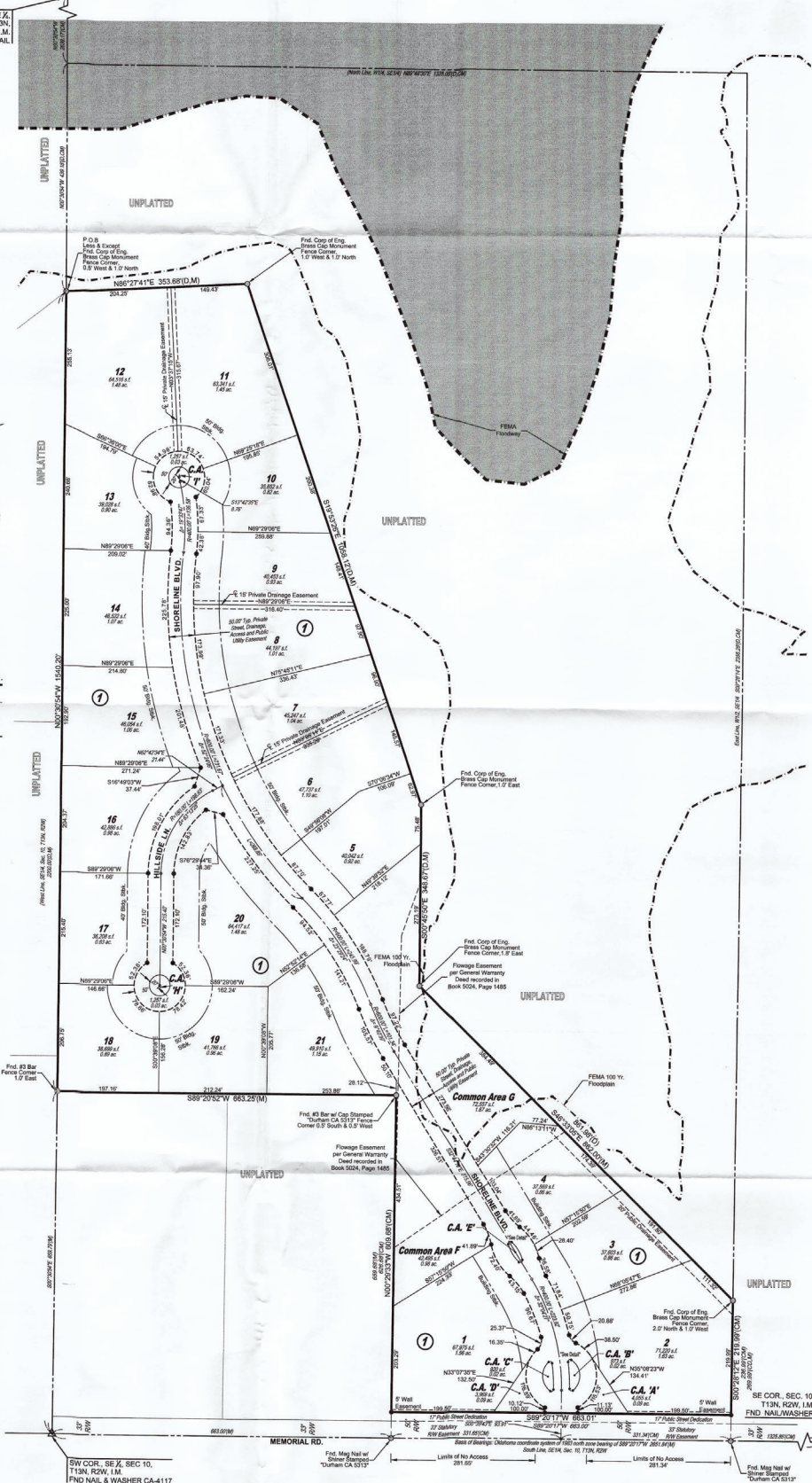
BENCH MARK

- BM#1 3 1/2" Brass Cap over Iron Rod, Cement Base with 6" Poly Wrap. Cap stamped "City of Edmond" STA 1086 (offset)

GENERAL LOCATION: 932' East of Memorial and Midwest Blvd.

SPECIFIC LOCATION: Approx. 932' E, N87°30'E of SW Corner Section 11-T13N-R2W-IM.

SPOC NAD-83 (U.S. SURVEY FOOT) ZONE: Oklahoma North Zone
NORTHING: 222390.6038
EASTING: 2150922.4803
MSL ELEV.: 1140.1300
See City of Edmond GPS Monument Data Sheet for more data.



NOTE:

According to the FEMA Flood Insurance Rate Map 40108C0185H dated December 18, 2009, this property lies within a portion of Zone AE, Areas within the 1% annual chance floodplain, Flood Prone Area. This area has been designated as subject to inundation by the base flood.



Date of Preparation: 02/22/2022