

Traffic and Transportation Commission

April 18, 2022

School Zone
Ward 6

V-C. Applicant: Dr. Freda Deskin, Chief Executive Officer, ASTEC Charter Schools, 2401 NW 23 Street, Suite 39A, Oklahoma City, OK 73107
Municipal Code §32-72, §32-170 and §32-171

Request: School zone on east bound General Pershing Boulevard from approximately 180 feet west to 1,100 feet west of the west curb line of N Villa Avenue.

<u>Traffic Data:</u>	<u>East/West</u>
Street Name:	General Pershing Boulevard
Street Typology:	Minor Arterial
bikewalkokc Designation:	Tier 1 facility (protected bicycle lane) from N May Avenue to N Pennsylvania Avenue
Street Width:	52 feet (divided roadway with 26 foot wide lanes in each direction separated by a 150 foot wide unimproved drainage channel in center median), two lanes (one east bound lane with a protected bicycle lane and one west bound lane with a protected bicycle lane), two-way, curbed
Existing Traffic Controls:	Traffic signal at N May Avenue and General Pershing Boulevard and all-way stop control at N Villa Avenue and General Pershing Boulevard.
Parking Controls:	No parking anytime (not posted)
Traffic Entering Volumes:	2,522 vpd (2021)
Existing Speed Limit:	40 mph
DPS Collision Data: (January 2020 to December 2020)	No collisions recorded on General Pershing Boulevard between N Miller Avenue and N Villa Avenue.

Summary: Dr. Freda Deskin, Chief Executive Officer of ASTEC Charter Schools, submitted a request for a school zone on General Pershing Boulevard adjacent to ASTEC Elementary School located at 2600 General Pershing Boulevard.

The Oklahoma City Municipal Code, 2020, authorizes the use of school zone signals and signs under certain conditions and for certain types of schools. Specifically, §32-170(a), Location of school signs and warnings, states that, "School zones shall be established only for public and private schools, kindergarten through grade 12" and that the regulatory signs delineating the limits of the zone shall be placed (b) "in advance of school zones where the speed limit is 30 miles per hour or more."

ASTEC Elementary School was opened in 2020 and serves students from pre-kindergarten through fifth grade. It is located on the south side of General Pershing Boulevard to the west of N Villa Avenue. General Pershing Boulevard is classified as a minor arterial street in planokc, which is the City's

latest comprehensive plan as adopted by the City Council on July 9, 2015 and has a 40 miles per hour (mph) speed limit. Between N May Avenue and N Villa Avenue, General Pershing Boulevard is a two-way, curbed, widely divided two (2) lane roadway with an unimproved drainage channel within its 150 foot wide center median.

Analysis:

Oklahoma Department of Public Safety (DPS) records show no collisions have been reported on east bound General Pershing Boulevard between N Miller Avenue and N Villa Avenue in 2020, which is the most recent substantially complete year for which statistical data is available. Since 2020, no collisions have been reported on east bound General Pershing Boulevard between N Miller Avenue and N Villa Avenue.

On May 17, 2021, the Commission considered a request from Dr. Freda Deskin (Item V-C) for traffic control changes at N Villa Avenue and General Pershing Boulevard. At that meeting, the Commission approved all-way stop control for the intersection. In 2020, twenty (20) collisions were recorded at the intersection. In 2021, eight (8) collisions were recorded at the intersection all of which occurred on or before May 23. Since installation of all-way stop control at the intersection on May 25, 2021, no collision reports have been filed for this location.

Morning and afternoon pedestrian crossing studies conducted on April 16, 2021 and March 29, 2022 observed no school-age pedestrians walking along or crossing General Pershing Boulevard or N Villa Avenue destined for ASTEC Elementary School.

Recommendations: Action on this matter is at the discretion of the Commission.

The appropriate use of a school zone on an arterial roadway is to reduce traffic speed in areas where school-age pedestrians (the most inexperienced and vulnerable group of all roadway users) are likely to cross a street on their way to and from school. The practice of reducing traffic speeds at school crossing locations is especially important where a crossing guard is present. The ability for a school crossing guard to interrupt the movement of traffic stream traveling at 25 miles per hour is inherently safer for all parties concerned than interrupting the flow of traffic traveling at higher speeds.

While the school does meet the basic eligibility requirements for a school zone as stipulated in §32-170, no elementary school age pedestrians have been observed walking to or riding bicycles to this school.

Next Actions:

Unless the decision of the Traffic and Transportation Commission is appealed, the Commission's action is final.

If approved, school zone warning signals will be used since the posted speed limit on General Pershing Boulevard is greater than 30 mph.

Traffic Management Division
SF:sc

§ 32-72. Same - Definition; establishing school crossings.

- (a) "School zone" shall mean a designated street or streets adjacent to an unprotected school site or an established school crossing removed from the school site and for the protection of children crossing a street on their route to and from school.
- (b) School crossings shall be established by resolution adopted by the Commission which shall make its determination on the basis of a traffic engineering study performed by the City Traffic Engineer.

(Code 1970, § 34-19; Ord. No. 17547, § 1, 2-21-84; Code 1980, § 32-72; Ord. No. 24857, § 1, 4-1-14)

§ 32-170. - Location of school signs and warnings.

- (a) School zones are designated by Section 32-71(1), School speed limit sign, and shall terminate with Section 32-71(2), End school zone sign. School zones shall be established only for public and private schools, kindergarten through grade 12. Colleges and vocational-technical schools shall not be signed.
- (b) School speed limit signs with flashing warning signals shall be erected in advance of school zones where the posted speed limit is 30 miles per hour or more.
- (c) School speed limit signs bearing the legend, "when children are present" shall be erected in advance of school sites in which the posted speed limit is 25 miles per hour or less or at locations where flashers are not present and other acceptable control is in operation.
- (d) All signs and placement thereof shall be in accordance with the Manual on Uniform Traffic Control Devices and specifications adopted by the State Highway Commission.
- (e) Crosswalks shall be designated by white lines extending from curb to curb or from the edges of the traversable roadway at each school crossing.
- (f) Approach lines shall be white zig-zag lines extending 100 feet in advance of all school zones. One approach line shall be installed in each approach lane.

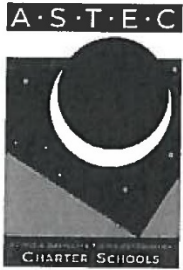
(Code 1970, § 34-30; Ord. No. 15861, § 1, 7-1-80; Ord. No. 17547, § 1, 2-21-84; Ord. No. 17815, § 1, 9-4-84; Code 1980, § 32-170; Ord. No. 24857, § 2, 4-1-14)

§ 32-171. - School zone speed limit.

- (a) No vehicle shall be driven at a greater speed than 25 miles per hour in any designated school zone under the following conditions unless a different speed limit is otherwise designated and posted:
 - (1) when signed with the legend "when flashing" and flashing lights are in operation.
 - (2) when signed with the legend "when children are present."
 - (3) when signed with the legend "25 miles per hour between the hours of 7:30 a.m. to 4:30 p.m."
- (b) A child shall be considered present when he or she is within 15 feet of the curb or edge of the street within a school zone and near enough so that a potential hazard exists with motorized traffic.

(Code 1970, § 34-31; Ord. No. 15861, § 1, 7-1-80; Ord. No. 17547, § 1, 2-21-84; Code 1980, § 32-171; Ord. No. 18251, § 1, 9-3-85)

State law reference— Designation of school speed limits, 11 O.S. § 22-117.



April 6, 2021

RECEIVED BY
APR 12 2021
Traffic Mgmt. Div.

Advanced Science
& Technology
Education
Charter Schools

2401 NW 23rd Street
Suite 39A
Oklahoma City,
Oklahoma 73107

(405) 947-6272
(405) 947-0035 fax

www.astec-k12.com

To Whom it May Concern:

The Advanced Science and Technology Education Charter Schools (ASTEC) is requesting the areas around our schools be designated as school zones. Our middle and high school is located in the Shepherd Center on NW 23rd Street and our newly built elementary school is located at 2600 General Pershing Boulevard, across from Northcare and Positive Tomorrows.

ASTEC has been a public charter school of choice since 2000. We serve more than 1300 highly diverse Oklahoma City children in grades PreK through 12th grade with a 97% Poverty Rate.

Many of our students walk or ride bikes from nearby neighborhoods and a few ride the City buses to and from school. As you are aware, General Pershing and the 2400 block of NW 23rd Street are very busy city streets.

The area for the school zone for the elementary school should be on General Pershing Boulevard from N. May Ave to Villa Avenue and on Villa Avenue from NW 10th Street north of General Pershing Boulevard to NW 2nd Street south where another school zone for another school begins.

The area for the school zone for the middle and high school should be NW 23rd from N. Drexel to N. McKinley and on N. Pennsylvania for N. 29th to NW 20th.

On behalf of the safety of our students and families, thank you for considering our request. Please let me know if there is anything else I need to do.

Sincerely,

Dr. Freda Deskin
CEO/Founder

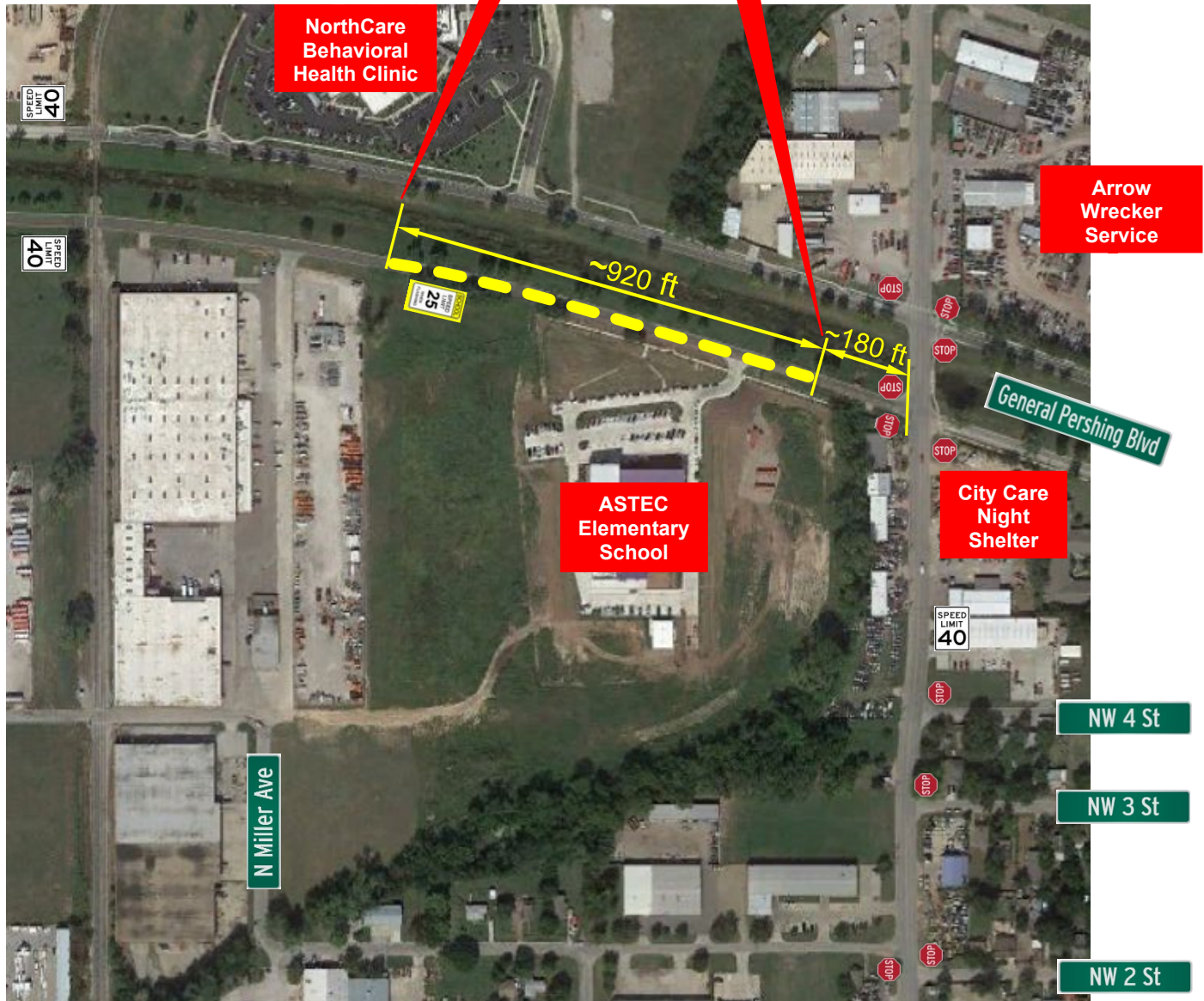
ASTEC Charter Schools
Governing Board

Debra Murray, Chair
Gordon Chandler
Franci Hart
Marcellus Jones
Elizabeth Parker
Alba Santiago

The ASTEC Fund
*(A Foundation Supporting
ASTEC Charter Schools)*

Doug Fuller, Chair
Kerry Alexander
Jerry Burger
Judy Hatfield
Bradley Jordan
Donnie Jones
Lou C. Kerr
Rita Moore
Clayton G. Moss

Approximate limits of school zone on east bound General Pershing Boulevard requested for ASTEC Elementary School.



Area Traffic Control Map



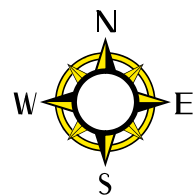
Speed Limits (as depicted)



Traffic controls (as depicted)



Approximate school zone limits



ASTEC
Elementary
School

Unimproved drainage
channel in General
Pershing Boulevard
center median.



Looking east on east bound General Pershing Boulevard toward N Villa Avenue from the approximate beginning of the requested school zone for ASTEC Elementary School. For visibility purposes, the zone would need to start west of the trees growing along the south side of the road. The unimproved drainage channel in General Pershing Boulevard center median is not safe for elementary school age pedestrians to traverse.



Looking west on east bound General Pershing Boulevard from the approximate end of the requested school zone west of N Villa Avenue.



Looking west on east bound General Pershing Boulevard from the west side of the ASTEC Elementary School site. Sidewalk is only present on the south side of General Pershing Boulevard across the frontage of the school.



Looking east on east bound General Pershing Boulevard from the east side of the ASTEC Elementary School site. This sidewalk ends approximately ten (10) feet from the edge of an unimproved drainage channel. The stop sign is at N Villa Avenue.