

AMENDMENT NO. 2  
TO THE  
PLANS AND SPECIFICATIONS  
FOR THE  
OCAT WRWA 2007 REHABILITATION/RECONSTRUCTION OF RUNWAY 13-31 PHASE I  
WILL ROGERS WORLD AIRPORT  
OKLAHOMA CITY, OKLAHOMA

February 24, 2022

This change consists of:  
Signature Page  
Description/Justification Pages  
Itemized Breakdown and Supporting Documentation Pages

TOTAL AMENDMENT NO. 2

Add (+) \$94,670.12 Total

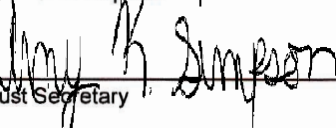
APPROVED:

APPROVED:

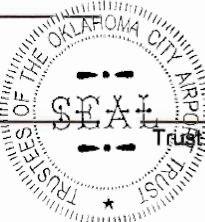
FOR THE  
DEPARTMENT OF AIRPORTS

FOR THE  
OKLAHOMA CITY AIRPORT TRUST

  
\_\_\_\_\_  
Director of Airports

  
\_\_\_\_\_  
Trust Secretary

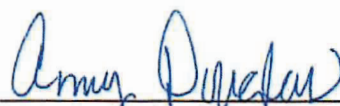
ATTEST: (Seal)



  
\_\_\_\_\_  
Trust Chairman



2/02/2022

  
\_\_\_\_\_  
Assistant Municipal Counselor  
and Trust Attorney

Dult Construction Co., Inc.

  
\_\_\_\_\_  
Mike Lipps  
Senior Vice President

Description and Justification

---

**ITEM NO. 1**                      Add (+) \$66,185.12

Description

Increase the Alternate No. 2 item quantity for Crushed Aggregate Base Course by 1,492 tons at \$44.36 per ton resulting in a contract total of 1,662 tons.

Add (+) \$66,185.12

Justification

Concrete was exposed in some areas of the runway after milling operations. The top of this concrete was higher than the proposed milled surface. There was approximately 6" of concrete over approximately 9" asphalt. To establish the correct grade so that the full 15.5" of proposed concrete, these concrete sections were removed and replaced with 9" Crushed Aggregate Base Course and 5" Bituminous Base Course.

**ITEM NO. 2**                      Add (+) \$13,715.00

Description

Increase the Alternate No. 2 item quantity for Pavement Removal – Type IH (9 to 14-inch Asphalt) by 2,110 square yards at \$6.50 per square yard resulting in a contract total of 2,610 square yards.

Add (+) \$13,715.00

Justification

Concrete was exposed in some areas of the runway after milling operations. The top of this concrete was higher than the proposed milled surface. There was approximately 6" of concrete over approximately 9" asphalt. To establish the correct grade so that the full 15.5" of proposed concrete, these concrete sections were removed and replaced with 9" Crushed Aggregate Base Course and 5" Bituminous Base Course.

**ITEM NO. 3**                      Add (+) \$14,770.00

Description

Increase the Alternate No. 4 item quantity for Pavement Removal – Type IIA (6-inch Concrete) by 2,110 square yards at \$7.00 per square yard resulting in a contract total of 7,210 square yards.

Add (+) \$14,770.00

Justification

Concrete was exposed in some areas of the runway after milling operations. The top of this concrete was higher than the proposed milled surface. There was approximately 6" of concrete over approximately 9" asphalt. To establish the correct grade so that the full 15.5" of proposed concrete, these concrete sections were removed and replaced with 9" Crushed Aggregate Base Course and 5" Bituminous Base Course.

**ITEM NO. 4**                      Plan Sheets

Sheets

The following sheets are issued as PR-001 to reflect the changes included in Amendment No. 2.

- 13 – Summary of Estimated Pay Quantities
- 18 – Pavement Demolition Plan I
- 48 – Elevation Control Plan II

AMENDMENT NO. 2  
OCAT WRWA 2007 REHABILITATION/RECONSTRUCTION OF RUNWAY 13-31 PHASE I  
WILL ROGERS WORLD AIRPORT  
February 24, 2022

Description and Justification

---

Total Amendment No. 2 Add (+) \$94,670.12

Refer attachments for additional information.

In consideration of this change, Duit Construction Co., Inc. contract is altered as follows:

Original Contract Amount	\$10,917,809.07
Amendment No. 1	-\$367,442.00
Change Order No. 1	\$396,136.63
Amendment No. 2	\$94,670.12
Change Order No. 2	\$9,490.23

<u>New Contract Amount</u>	<u>\$11,050,664.05</u>
----------------------------	------------------------

Original Contract Duration	275 calendar days
Amendment No. 1	0 calendar days
Change Order No. 1	0 calendar days
Amendment No. 2	0 calendar days

<u>New Contract Duration</u>	<u>275 calendar days</u>
------------------------------	--------------------------

<u>Completion Date</u>	<u>April 28, 2022</u>
------------------------	-----------------------

END OF AMENDMENT NO. 2



T:\2001\Drawings\2001-0401.dgn  
1/3/2022  
PLOTTED ON:

SUMMARY OF ESTIMATED PAY QUANTITIES - BASE BID						
ITEM NO.	NOTE NO.	SPEC. NO.	DESCRIPTION - BASE BID	UNIT	QUANTITY	
					EST.	AS-BUILT
1	N/A	OCAT 00560-1	DEFECT BOND	LUMP SUM	1	
2	N/A	OCAT 00800-3	THIRD PARTY INSURANCE	LUMP SUM	1	
3	1B	OCAT 00800-5	MAINTENANCE OF TRAFFIC	LUMP SUM	1	
4	N/A	DIV. 2-1.1	CONSTRUCTION STAKING	LUMP SUM	1	
5	2B	DIV. 2-2.1	3X4 RCB DEMOLITION	LINEAR FOOT	420	
6	2B	DIV. 2-2.2	UNDERDRAIN REMOVAL	LINEAR FOOT	7,700	
7	2B	DIV. 2-2.3	UNDERDRAIN CLEANOUT REMOVAL	EACH	47	
8	2B	DIV. 2-2.4	STORM SEWER STRUCTURE DEMOLITION	EACH	2	
9	1D	C-100-1	CONTRACTOR QUALITY CONTROL PROGRAM (CQCP)	LUMP SUM	1	
10	3	C-102-1	INSTALLATION AND REMOVAL OF SILT FENCE	LINEAR FOOT	7,620	
11	3	C-102-2	INLET PROTECTION	EACH	6	
12	3	C-102-3	TEMPORARY MULCHING	ACRE	20	
13	1A	C-105-1	MOBILIZATION	LUMP SUM	1	
14	4	P-101-5.1	PAVEMENT REMOVAL - TYPE IIA (6-INCH CONCRETE)	SQUARE YARD	500	
15	4	P-101-5.3	PAVEMENT REMOVAL - TYPE IB (3-INCH COLD MILLING)	SQUARE YARD	1,700	
16	4	P-101-5.5	PAVEMENT REMOVAL - TYPE IE (8-INCH COLD MILLING)	SQUARE YARD	4,500	
17	6B	P-152-4.1	UNCLASSIFIED EXCAVATION	CUBIC YARD	33,800	
18	6C	P-152-4.2	MUCK EXCAVATION	CUBIC YARD	500	
19	6D	P-152-4.3	BORROW EXCAVATION	CUBIC YARD	500	
20	7	P-153-6.1	CONTROLLED LOW-STRENGTH MATERIAL (CLSM)	CUBIC YARD	200	
21	9A	P-401-8.2	BITUMINOUS SURFACE COURSE	TON	340	
22	9D	P-403-8.1	BITUMINOUS BASE COURSE	TON	1,040	
23	9C	P-403-8.2	BITUMINOUS SURFACE COURSE	TON	1,020	
24	11	P-603-5.1	EMULSIFIED ASPHALT TACK COAT	GALLON	1,075	
25	12	P-610-6.1	STRUCTURAL PORTLAND CEMENT CONCRETE	CUBIC YARD	50	
26	12C	P-610-6.2	REINFORCING STEEL	POUND	10,000	
27	13	P-620-1	TEMPORARY PAVEMENT MARKING	SQUARE FOOT	0	
28	13	P-620-2	REFLECTORIZED PAVEMENT MARKING	SQUARE FOOT	31,400	
29	13	P-620-3	NON-REFLECTORIZED PAVEMENT MARKING	SQUARE FOOT	1,400	
30	13B	P-620-4	PERMANENT PAVEMENT MARKING REMOVAL	SQUARE FOOT	1,000	
31	14	P-621-5.1	SAW-CUT GROOVES	SQUARE YARD	53,900	
32	15	D-701-5.2	54-INCH RCP CLASS IV	LINEAR FOOT	426	
33	15	D-701-5.3	PIPE BEDDING MATERIAL	CUBIC YARD	260	
34	17	D-705-5.1	6-INCH PERFORATED UNDERDRAIN	LINEAR FOOT	5,910	
35	17	D-705-5.2	8-INCH NON-PERFORATED UNDERDRAIN	LINEAR FOOT	928	
36	17	D-705-5.3	UNDERDRAIN COVER MATERIAL	CUBIC YARD	2,373	
37	17	D-705-5.4	FILTER FABRIC	SQUARE YARD	10,940	
38	12D	D-751-5.1	AIRCRAFT RATED FRAME AND GRATE	EACH	1	
39	18C	D-751-5.2	8" DIA MANHOLE	EACH	1	
40	18	D-751-5.3	UNDERDRAIN CLEANOUT	EACH	41	
41	20A	T-901-1	SEEDING	ACRE	17	
42	20B	T-904-1	SODDING	SQUARE YARD	12,000	
43	20E	T-905-5.1	TOPSOILING	CUBIC YARD	25,900	
44	20F	T-908-1	MULCHING	ACRE	17	
45	21	L-108-5.1	REMOVE EXISTING #8 L-824 FROM EXISTING RACEWAY	LINEAR FOOT	21,000	
46	21	L-108-5.2	CABLE, L-824C, #8 AWG, PULLED INTO CONDUIT	LINEAR FOOT	21,000	
47	21	L-108-5.3	CABLE, L-824C, #8 AWG, TEMPORARY CONNECTIONS	LINEAR FOOT	4,000	
48	21	L-110-5.1	2" SCHEDULE 40 PVC DUCT, CONCRETE ENCASED UNDER PAVEMENT OR FUTURE PAVEMENT	LINEAR FOOT	8,000	
49	21	L-110-5.2	2" SCHEDULE 40 PVC DUCT, DIRECT BURIED	LINEAR FOOT	500	
50	21	L-110-5.3	2" SCHEDULE 40 PVC DUCT, BORED UNDER EXISTING PAVEMENT	LINEAR FOOT	500	
51	21	L-110-5.4	REMOVE AND DISPOSE OF L-867 PULL BOX INCLUDING ALL ASSOCIATED CONCRETE AND MATERIALS	EACH	5	
52	21	L-110-5.5	L-867 STAINLESS STEEL PULL BOX INCLUDING ALL ASSOCIATED COVERS, GASKETS, GROMMETS, CONCRETE, AND MATERIALS	EACH	2	
53	21	L-110-5.6	EXCAVATE AND EXPOSE EXISTING 2" PVC DUCT	EACH	16	
54	21	L-110-5.7	EXTEND EXISTING 4-4" DUCT BANK, 35' EXTENSION	EACH	2	
55	21	L-110-5.8	REMOVE AND REPLACE COLLAPSED 4-4" DUCT BANK	LINEAR FOOT	0	
56	21	L-110-5.9	BRASS DUCT MARKER	EACH	20	
57	21	L-125-5.1	REMOVE AND DISPOSE OF L-867 BASE HOUSING INCLUDING ALL ASSOCIATED CONCRETE AND MATERIALS	EACH	45	
58	21	L-125-5.2	L-867 STAINLESS STEEL BASE HOUSING, SIZE B, 36" DEEP, WITH GROUNDING, CONCRETE, AND GROMMETS	EACH	50	
59	21	L-125-5.3	REMOVE AND RETAIN FOR REUSE L-861 ELEVATED RUNWAY EDGE LIGHT AND ACCESSORIES	EACH	43	
60	21	L-125-5.4	REINSTALL EXISTING L-861 ELEVATED RUNWAY EDGE LIGHT AND ACCESSORIES WITH NEW GASKET	EACH	43	
61	21	L-125-5.5	REMOVE AND RETAIN FOR REUSE L-861E ELEVATED THRESHOLD LIGHT AND ACCESSORIES	EACH	8	
62	21	L-125-5.6	REINSTALL EXISTING L-861E ELEVATED THRESHOLD LIGHT AND ACCESSORIES WITH NEW GASKET	EACH	8	
63	21	L-125-5.7	REMOVE AND RETAIN FOR REUSE L-852D FLUSH RUNWAY EDGE LIGHT AND ACCESSORIES	EACH	2	
64	21	L-125-5.8	REINSTALL EXISTING L-852D FLUSH RUNWAY EDGE LIGHT AND ACCESSORIES WITH NEW GASKET	EACH	2	
65	21	L-125-5.9	REMOVE AND RETAIN FOR REUSE L-861T ELEVATED TAXIWAY LIGHT AND ACCESSORIES	EACH	14	
66	21	L-125-5.10	REINSTALL L-861T ELEVATED TAXIWAY LIGHT AND ACCESSORIES ON BASE HOUSING WITH NEW GASKET	EACH	14	
67	21	L-125-5.11	REMOVE GUIDANCE SIGN AND RETAIN FOR REUSE	EACH	13	
68	21	L-125-5.12	REINSTALL GUIDANCE SIGN ON EXISTING CONCRETE PAD, INCLUDING NEW GASKET AND ALL REQUIRED MATERIALS (PER SIGN)	EACH	13	
69	21	L-125-5.13	EXPAND EXISTING GUIDANCE SIGN PAD (PER SIGN)	EACH	13	
70	21	L-125-5.14	CONVERT EXISTING GUIDANCE SIGN TO LED ILLUMINATORS (PER SIGN)	EACH	13	
71	21	L-125-5.15	REPLACE DAMAGED OR FADED SIGN GRAPHIC PANEL (PER SIGN MODULE)	EACH	12	
72	21	L-125-5.16	RECONNECT EXISTING WIND CONE	EACH	1	
73	21	L-125-5.17	NEW GASKET ON EXISTING L-867 BASE HOUSING	EACH	15	
74	21	L-125-5.18	LOCATE EXISTING CONDUIT OR DUCT BANK USING POTHOLING	EACH	10	
75	21	L-125-5.19	LOCKOUT/TAGOUT PROCEDURES	LUMP SUM	1	
76	21	L-125-5.20	RECALIBRATE EXISTING REGULATORS	EACH	2	
77	21	L-125-5.21	RECONFIGURE AIRFIELD LIGHTING COMPUTER SOFTWARE	LUMP SUM	1	
8000			DISPOSAL OF ASBESTOS UNDERDRAIN	LUMP SUM	1	
8001			15.5-INCH P.C. CONCRETE PAVEMENT (PLAIN)	SQUARE YARD	3,220	
8002			15.5-INCH P.C. CONCRETE PAVEMENT (REINFORCED)	SQUARE YARD	250	
8003			PAVEMENT REMOVAL - TYPE IC (6-INCH COLD MILLING)	SQUARE YARD	3,466	
8004			ROCK BACKFILL (P-152, ODOT TYPE A)	CUBIC YARD	350	

SUMMARY OF ESTIMATED PAY QUANTITIES - ALTERNATE No. 1						
ITEM NO.	NOTE NO.	SPEC. NO.	DESCRIPTION - ALT. NO. 1 - RUNWAY 13-31 PAVEMENT DEMOLITION AND NEW ASPHALT PAVEMENT	UNIT	QUANTITY	
					EST.	AS-BUILT
78	4	P-101-5.2	PAVEMENT REMOVAL - TYPE IA (15 TO 22-INCH ASPHALT)	SQUARE YARD	500	
79	4	P-101-5.3	PAVEMENT REMOVAL - TYPE IB (3-INCH COLD MILLING)	SQUARE YARD	8,750	
80	4	P-101-5.6	PAVEMENT REMOVAL - TYPE IF (10-INCH COLD MILLING)	SQUARE YARD	61,600	
81	8	P-209-5.1	CRUSHED AGGREGATE BASE COURSE	TON	530	
82	9B	P-401-8.1	BITUMINOUS BASE COURSE	TON	19,590	
83	9A	P-401-8.2	BITUMINOUS SURFACE COURSE	TON	17,600	
84	11	P-603-5.1	EMULSIFIED ASPHALT TACK COAT	GALLON	16,710	

SUMMARY OF ESTIMATED PAY QUANTITIES - ALTERNATE No. 2						
ITEM NO.	NOTE NO.	SPEC. NO.	DESCRIPTION - ALT. NO. 2 - RUNWAY 13-31 PAVEMENT DEMOLITION AND NEW CONCRETE PAVEMENT	UNIT	QUANTITY	
					EST.	AS-BUILT
85	4	P-101-5.3	PAVEMENT REMOVAL - TYPE IB (3-INCH COLD MILLING)	SQUARE YARD	4,375	
86	4	P-101-5.4	PAVEMENT REMOVAL - TYPE IC (5-INCH COLD MILLING)	SQUARE YARD	8,500	
87	4	P-101-5.7	PAVEMENT REMOVAL - TYPE JG (16-INCH COLD MILLING)	SQUARE YARD	61,600	
88	4	P-101-5.8	PAVEMENT REMOVAL - TYPE IH (8 TO 13-INCH ASPHALT)	SQUARE YARD	2,610	
89	8	P-209-5.1	CRUSHED AGGREGATE BASE COURSE	TON	1,662	
90	9D	P-403-8.1	BITUMINOUS BASE COURSE	TON	3,405	
91	10	P-501-8.1	15.5-INCH P.C. CONCRETE PAVEMENT (PLAIN)	SQUARE YARD	61,600	
92	11	P-603-5.1	EMULSIFIED ASPHALT TACK COAT	GALLON	1,795	
93	13	P-620-1	TEMPORARY PAVEMENT MARKING	SQUARE FOOT	6,300	
94	13	P-620-3	NON-REFLECTORIZED PAVEMENT MARKING	SQUARE FOOT	6,300	

SUMMARY OF ESTIMATED PAY QUANTITIES - ALTERNATE No. 3						
ITEM NO.	NOTE NO.	SPEC. NO.	DESCRIPTION - ALTERNATE NO. 3 - REHABILITATE TAXIWAY C (ENTRANCE TAXIWAY)	UNIT	QUANTITY	
					EST.	AS-BUILT
95	3	C-102-1	INSTALLATION AND REMOVAL OF SILT FENCE	LINEAR FOOT	270	
96	3	C-102-3	TEMPORARY MULCHING	ACRE	1	
97	4	P-101-5.3	PAVEMENT REMOVAL - TYPE IB (3-INCH COLD MILLING)	SQUARE YARD	870	
98	4	P-101-5.6	PAVEMENT REMOVAL - TYPE JF (10-INCH COLD MILLING)	SQUARE YARD	3,470	
99	9B	P-401-8.1	BITUMINOUS BASE COURSE	TON	0	
100	9A	P-401-8.2	BITUMINOUS SURFACE COURSE	TON	0	
101	11	P-603-5.1	EMULSIFIED ASPHALT TACK COAT	GALLON	0	
102	13	P-620-2	REFLECTORIZED PAVEMENT MARKING	SQUARE FOOT	300	
103	20B	T-904-1	SODDING	SQUARE YARD	700	
104	21	L-125-5.9	REMOVE AND RETAIN FOR REUSE L-861T ELEVATED TAXIWAY LIGHT AND ACCESSORIES	EACH	11	
105	21	L-125-5.10	REINSTALL L-861T ELEVATED TAXIWAY LIGHT AND ACCESSORIES ON BASE HOUSING WITH NEW GASKET	EACH	11	
106	21	L-125-5.11	REMOVE GUIDANCE SIGN AND RETAIN FOR REUSE	EACH	1	
107	21	L-125-5.12	REINSTALL GUIDANCE SIGN ON EXISTING CONCRETE PAD, INCLUDING NEW GASKET AND ALL REQUIRED MATERIALS (PER SIGN)	EACH	1	
108	21	L-125-5.13	EXPAND EXISTING GUIDANCE SIGN PAD (PER SIGN)	EACH	1	
109	21	L-125-5.14	CONVERT EXISTING GUIDANCE SIGN TO LED ILLUMINATORS (PER SIGN)	EACH	1	

SUMMARY OF ESTIMATED PAY QUANTITIES - ALTERNATE No. 4						
ITEM NO.	NOTE NO.	SPEC. NO.	DESCRIPTION - ALTERNATE NO. 4 - REMOVE TAXIWAY L (EXIT TAXIWAY)	UNIT	QUANTITY	
					EST.	AS-BUILT
110	3	C-102-2	INLET PROTECTION	EACH	1	
111	3	C-102-3	TEMPORARY MULCHING	ACRE	4	
112	4	P-101-5.1	PAVEMENT REMOVAL - TYPE IIA (6-INCH CONCRETE)	SQUARE YARD	7,210	
113	4	P-101-5.6	PAVEMENT REMOVAL - TYPE IF (10-INCH COLD MILLING)	SQUARE YARD	5,100	
114	6B	P-152-4.1	UNCLASSIFIED EXCAVATION	CUBIC YARD	13,900	
115	12	P-610-6.1	STRUCTURAL PORTLAND CEMENT CONCRETE	CUBIC YARD	4	
116	12C	P-610-6.2	REINFORCING STEEL	POUND	450	
117	15	D-701-5.1	18-INCH RCP CLASS IV	LINEAR FOOT	320	
118	15	D-701-5.3	PIPE BEDDING MATERIAL	CUBIC YARD	70	
119	12D	D-751-5.1	AIRCRAFT RATED FRAME AND GRATE	EACH	1	
120	20A	T-901-1	SEEDING	ACRE	4	
121	20B	T-904-1	SODDING	SQUARE YARD	800	
122	20E	T-905-5.1	TOPSOILING	CUBIC YARD	7,100	
123	20F	T-908-1	MULCHING	ACRE	4	
124	21	L-108-5.1	REMOVE EXISTING #8 L-824 FROM EXISTING RACEWAY	LINEAR FOOT	3,000	
125	21	L-108-5.2	CABLE, L-824C, #8 AWG, PULLED INTO CONDUIT	LINEAR FOOT	1,200	
126	21	L-108-5.3	CABLE, L-824C, #8 AWG, TEMPORARY CONNECTIONS	LINEAR FOOT	300	
127	21	L-110-5.2	2" SCHEDULE 40 PVC DUCT, DIRECT BURIED	LINEAR FOOT	900	
128	21	L-110-5.6	EXCAVATE AND EXPOSE EXISTING 2" PVC DUCT	EACH	4	
129	21	L-125-5.1	REMOVE AND DISPOSE OF L-867 BASE HOUSING INCLUDING ALL ASSOCIATED CONCRETE AND MATERIALS	EACH	17	
130	21	L-125-5.2	L-867 STAINLESS STEEL BASE HOUSING, SIZE B, 36" DEEP, WITH GROUNDING, CONCRETE, AND GROMMETS	EACH	1	
131	21	L-125-5.4	REINSTALL EXISTING L-861 ELEVATED RUNWAY EDGE LIGHT AND ACCESSORIES WITH NEW GASKET	EACH	1	
132	21	L-125-5.9	REMOVE AND RETAIN FOR REUSE L-861T ELEVATED TAXIWAY LIGHT AND ACCESSORIES	EACH	18	
133	21	L-125-5.10	REINSTALL L-861T ELEVATED TAXIWAY LIGHT AND ACCESSORIES ON BASE HOUSING WITH NEW GASKET	EACH	4	
134	21	L-125-5.11	REMOVE GUIDANCE SIGN AND RETAIN FOR REUSE	EACH	0	
135	21	L-125-5.13	EXPAND EXISTING GUIDANCE SIGN PAD (PER SIGN)	EACH	0	
136	21	L-125-5.14	CONVERT EXISTING GUIDANCE SIGN TO LED ILLUMINATORS (PER SIGN)	EACH	0	
137	21	L-125-5.15	REPLACE DAMAGED OR FADED SIGN GRAPHIC PANEL (PER SIGN MODULE)	EACH	0	
138	21	L-125-5.17	NEW GASKET ON EXISTING L-867 BASE HOUSING	EACH	8	
139	21	L-125-5.18	LOCATE EXISTING CONDUIT OR DUCT BANK USING POTHOLING	EACH	2	
140	21	L-125-5.19	LOCKOUT/TAGOUT PROCEDURES	LUMP SUM	1	
141	21	L-125-5.20	RECALIBRATE EXISTING REGULATORS	EACH	1	
142	21	L-125-5.21	RECONFIGURE AIRFIELD LIGHTING COMPUTER SOFTWARE	LUMP SUM	1	



12-08-2021	PR-002	JH	SP
12-08-2021	PR-001	JH	SP
04-16-2021	ADDENDUM No. 2	JH	SP
04-08-2021	ADDENDUM No. 1	KF	SP
REVISION	DATE	BY	CHK

WILL ROGERS WORLD AIRPORT  
OKLAHOMA CITY, OKLAHOMA

PROJECT  
REHABILITATION / RECONST. OF RUNWAY 13-31 PHASE I

SHEET TITLE  
SUMMARY OF ESTIMATED PAY QUANTITIES

PROJECT NUMBER  
AIP Project No. 3-40-0072-082-2021

SCALE  
N/A

DATE  
03-25-2021

PROJ. ENGR.  
SGP

DES. TECH.  
KPF

CAD TECH.  
CRB

QUALITY CONTROL  
SGP

SHEET No.  
13

OF  
55

ISSUED FOR CONSTRUCTION  
06-25-2021



BEFORE YOU DIG

CALL OKIE

OKLAHOMA

ONE-CALL

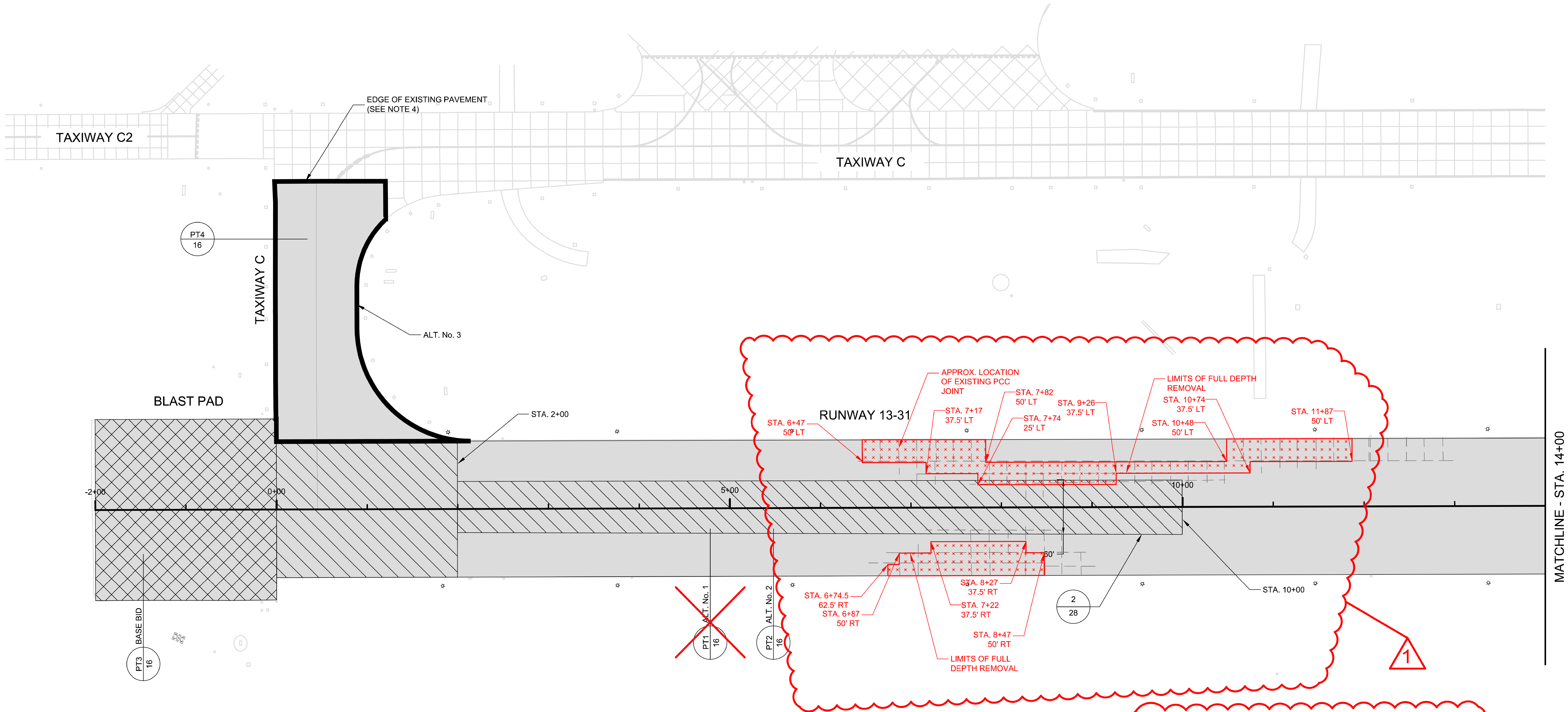
SYSTEM, INC.

800-522-OKIE (6543)

TULSA (918) 732-OKIE (6543)

OKC (405) 840-5032

THESE NUMBERS ARE TO BE USED FOR INFORMATION ON THE LOCATION OF ALL UNDERGROUND UTILITIES. CONTACT THESE NUMBERS PRIOR TO ANY EXCAVATION.

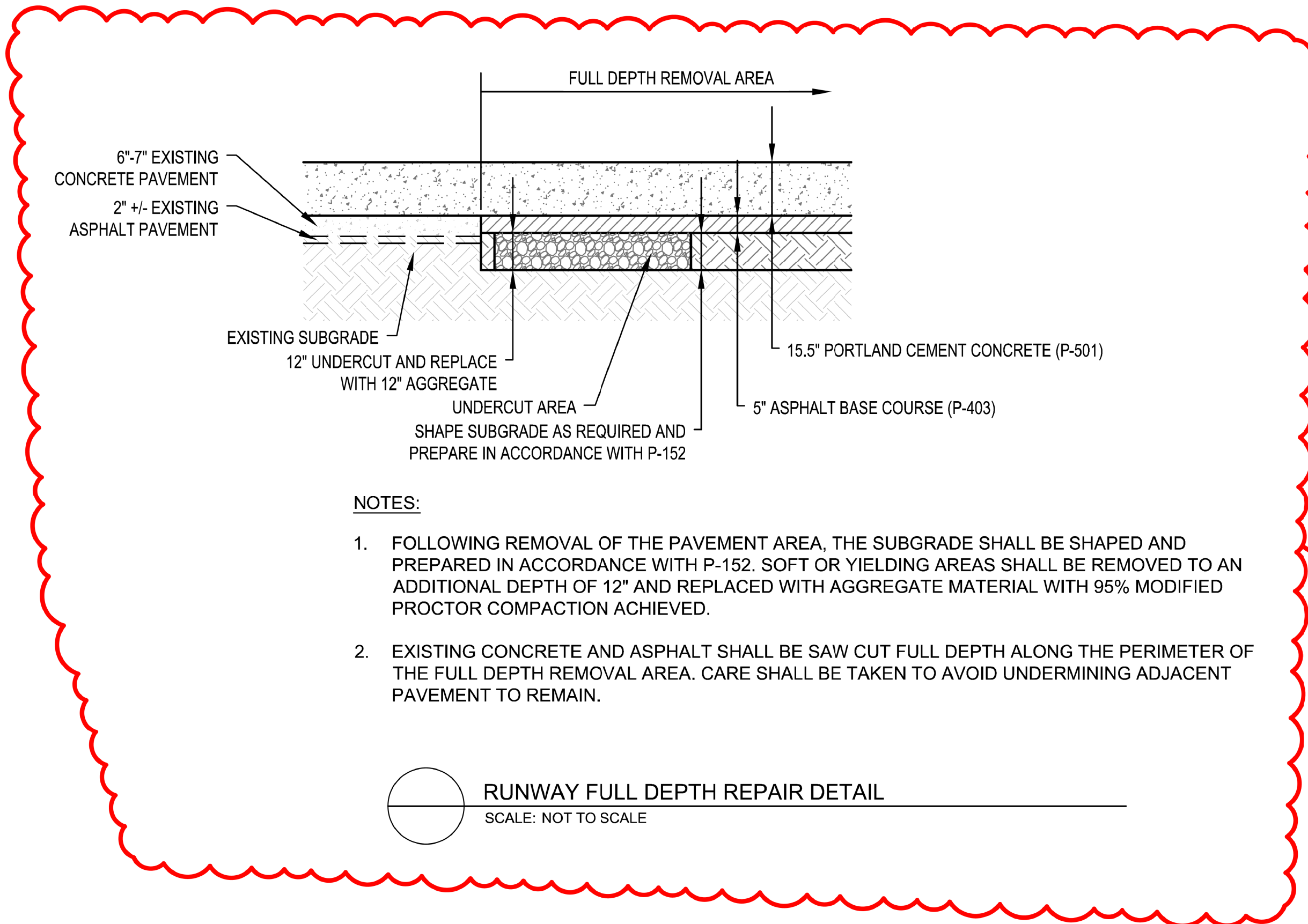


LEGEND

- MILL 10" DEPTH BELOW PROPOSED SURFACE (ALT. No. 3)
- MILL 16" DEPTH BELOW PROPOSED SURFACE (ALT. No. 2)
- POTENTIAL BASE REPAIR AREA - MILL 5" ADDITIONAL DEPTH (ALT. No. 2) - SEE NOTES 1, 2 & 3
- MILL 8" DEPTH BELOW PROPOSED SURFACE (BASE BID)
- MILL VARIABLE DEPTH (3" MAX.) FOR GRADE TRANSITION RAMP (BASE BID)
- FULL DEPTH REMOVAL (BASE BID)

NOTES:

- BASE REPAIR AREAS SHOWN ARE APPROXIMATE AND FOR ALT. No. 2 ONLY.
- CONTRACTOR SHALL CONTINUOUSLY CLEAN BEHIND MILLING OPERATION. MILLED SURFACE MUST BE CLEANED TO THE OWNER REPRESENTATIVE'S SATISFACTION PRIOR TO INSPECTING OR PROOF ROLLING.
- ALL MILLED SURFACES SHALL BE INSPECTED AND ACCEPTED BY AN OWNER'S REPRESENTATIVE PRIOR TO PLACING NEW PAVEMENT. AT THE DIRECTION OF THE OWNER'S REPRESENTATIVE, THE CONTRACTOR SHALL PROOF ROLL THE MILLED SURFACE TO CHECK FOR YIELDING. ADDITIONAL REMOVAL FOR DEEP REPAIRS SHALL BE COMPLETED IN ACCORDANCE WITH DETAILS 1, 2 AND 3 ON SHEET 28 AS DIRECTED BY THE OWNER'S REPRESENTATIVE.
- ADJACENT EXISTING PAVEMENT IS TO BE PROTECTED DURING REMOVAL OPERATIONS. DAMAGE TO ADJACENT EXISTING PAVEMENT SHALL BE REPAIRED AT THE CONTRACTOR'S EXPENSE.



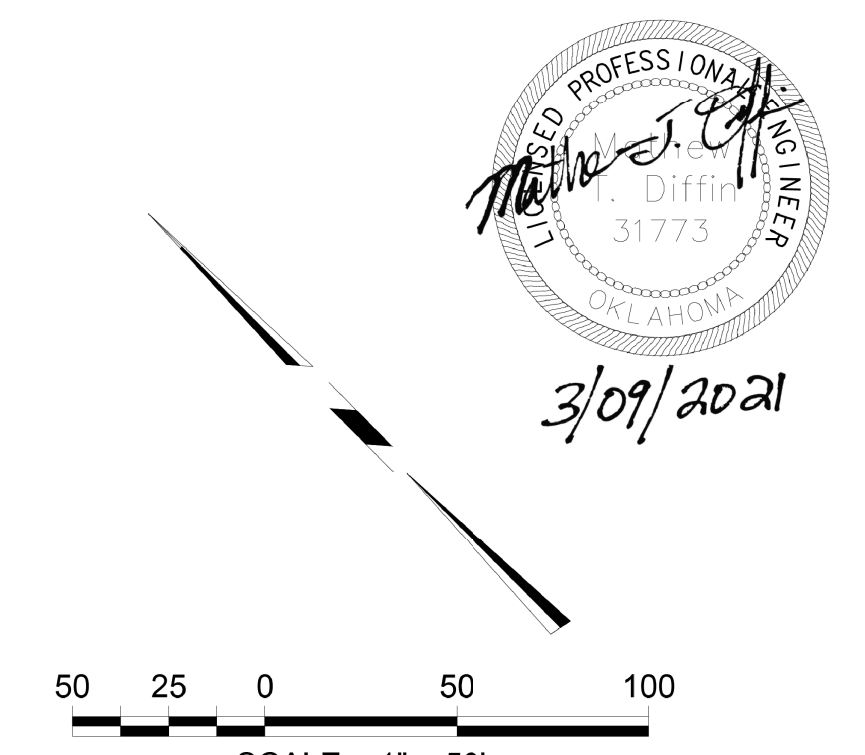
RUNWAY FULL DEPTH REPAIR DETAIL  
SCALE: NOT TO SCALE

NOTES:

- MILLING OF THE EXISTING PCC SURFACE MAY BE REQUIRED ADJACENT TO THE REMOVAL LIMITS SHOWN TO ACHIEVE DESIRED GRADES.
- EXISTING PCC JOINT LOCATIONS ARE APPROXIMATE. REMOVAL LIMITS SHALL BE ADJUSTED TO EXISTING PCC JOINTS IN THE FIELD SHOULD LIMITS BE WITHIN 8 FEET OF AN EXISTING PCC JOINT.
- SAWCUT THE ENTIRE REMOVAL AREA PERIMETER FULL DEPTH.
- SUBGRADE TO BE SHAPED TO GRADE AND PREPARED IN ACCORDANCE WITH P-152. SOFT OR YIELDING SUBGRADE AREAS SHALL BE REMOVED TO AN ADDITIONAL DEPTH OF 12 INCHES AND REPLACED WITH AGGREGATE MATERIAL COMPACTED TO 95% OF MODIFIED PROCTOR.

LEGEND

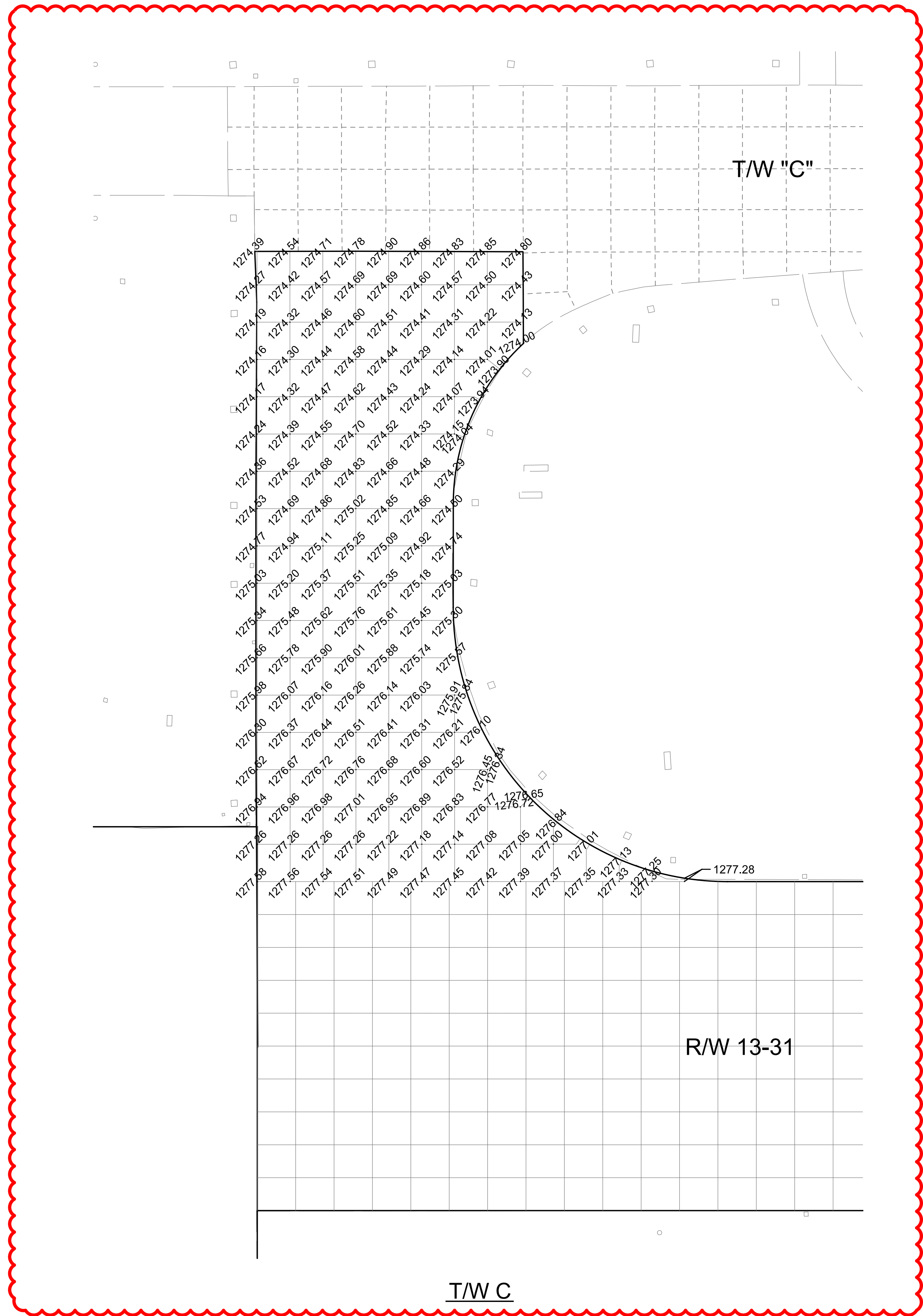
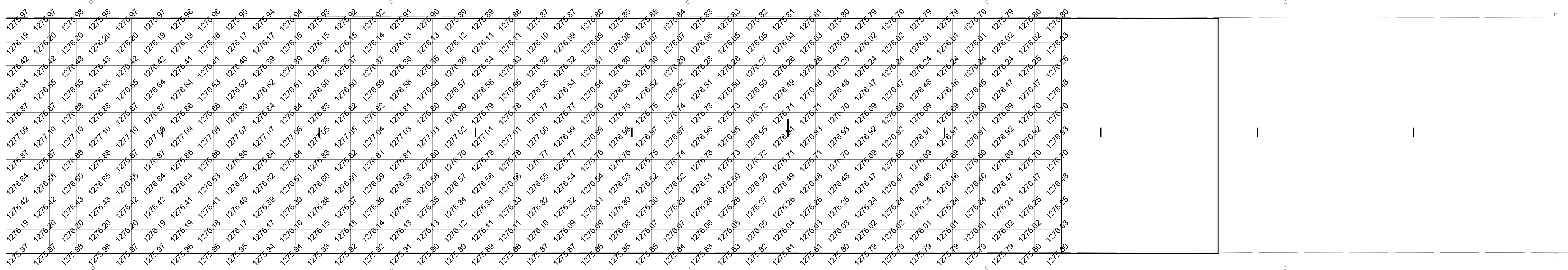
- FULL DEPTH REMOVAL



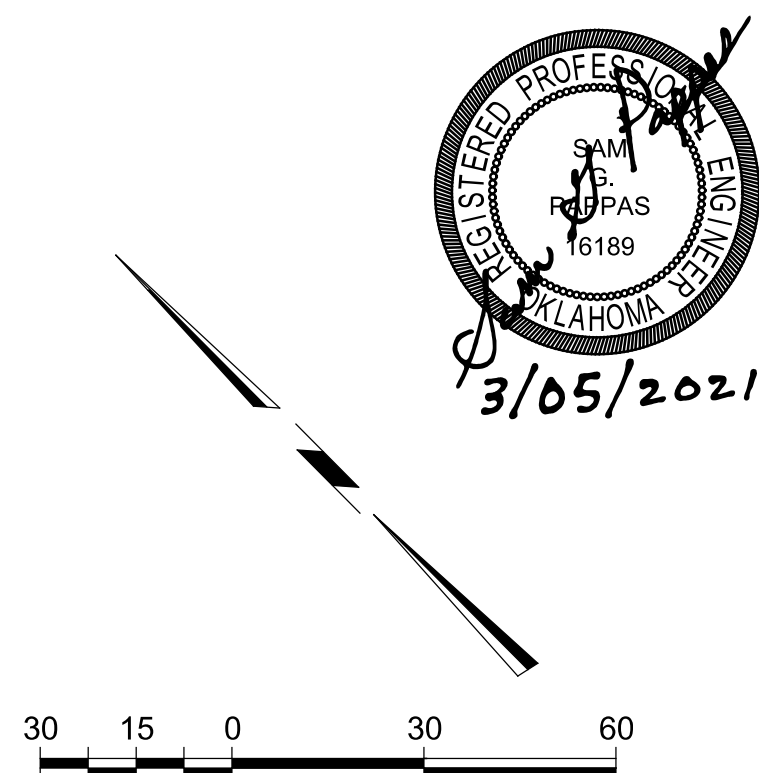
ISSUED FOR CONSTRUCTION  
06-25-2021

REVISION	12-08-2021	PR-002	SH	MD
DATE			BY	CKD
WILL ROGERS WORLD AIRPORT OKLAHOMA CITY, OKLAHOMA				
PROJECT REHABILITATION / RECONST. OF RUNWAY 13-31 PHASE I				
SHEET TITLE PAVEMENT DEMOLITION PLAN I				
PROJECT NUMBER AIP Project No. 3-40-0072-082-2021	SCALE AS SHOWN	DATE 03-25-2021		
RDM INTERNATIONAL, INC. 14310 Sullyfield Circle Suite 600 Chantilly, VA 20151 (703) 709-2540 C.O.A. No. 6342 Renewal Date: 06-30-23	PROJ. ENGR. MTD	DES. TECH. SMH	CAD TECH. SMH	QUALITY CONTROL MTD
18				OF 55





1



30 15 0 30 60

SCALE - 1" = 30'  
SHEET SIZE = 30" x 42"  
ISSUED FOR CONSTRUCTION  
06-25-2021

REVISION	12-08-2021	PR-002	KF	SP
DATE			BY	CRD
PROJECT WILL ROGERS WORLD AIRPORT OKLAHOMA CITY, OKLAHOMA				
SHEET TITLE REHABILITATION / RECONST. OF RUNWAY 13-31 PHASE I				
SHEET TITLE ELEVATION CONTROL PLAN II				
PROJECT NUMBER	AIP Project No. 3-40-0072-082-2021	SCALE	AS SHOWN	DATE
PROJ. ENGR.	SGP	PROJ. ENGR.	KPF	03-25-2021
DES. TECH.	KPF	DES. TECH.	CRB	
CAD TECH.	CRB	CAD TECH.	SGP	
QUALITY CONTROL	SGP	QUALITY CONTROL		
MacArthur Associated Consultants 25 N.W. 146th Street - Edmond, OK 73013 - 405.848.2471 C.O.A. No. 699 Renewal Date: 06-30-23				
48				OF 55