

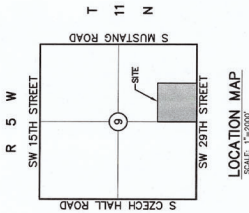
FINAL PLAT DRAFT

FIRESIDE CREEK

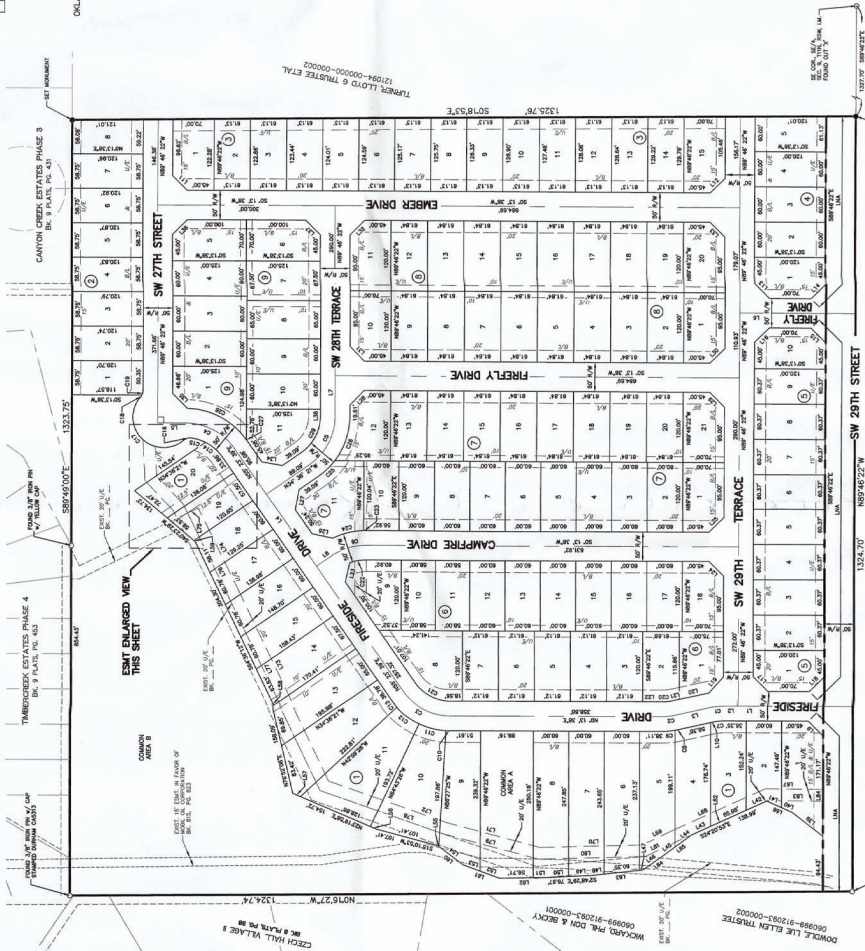
BEING A PART OF THE SOUTHEAST QUARTER (SE 1/4) OF SECTION 19 (N), TOWNSHIP 36 NORTH, RANGE 12 WEST, CANYON CREEK, OKLAHOMA COUNTY, OKLAHOMA.

PREPARED BY:
GRUBBS CONSULTING, LLC
1800 S. SARA ROAD
TULSA, OKLAHOMA 74109
(405) 285-0641

REVISIONS:
SUBMITTAL SET, 10/25/20
CURRENT ZONING: R1
NET COMMON AREA: 7.81 ACRES
GROSS COMMON AREA: 7.81 ACRES



BASE OF BEARING = N 89°42'21" W
SOUTH LINE SE 1/4
OKLAHOMA NORTH MAPS (2011) EPOCH 2010.0



CENTERLINE TABLE			
CURVE NO.	DIRECTION	LENGTH	CHORD BEARING
C1	100.00°	21.68'	172°51'44"
C2	100.00°	21.68'	172°51'44"
C3	100.00°	21.68'	172°51'44"
C4	100.00°	21.68'	172°51'44"
C5	100.00°	21.68'	172°51'44"
C6	100.00°	21.68'	172°51'44"
C7	100.00°	21.68'	172°51'44"
C8	100.00°	21.68'	172°51'44"

LOT CURVE TABLE			
CURVE NO.	DIRECTION	LENGTH	CHORD BEARING
L1	100.00°	21.68'	172°51'44"
L2	100.00°	21.68'	172°51'44"
L3	100.00°	21.68'	172°51'44"
L4	100.00°	21.68'	172°51'44"
L5	100.00°	21.68'	172°51'44"
L6	100.00°	21.68'	172°51'44"
L7	100.00°	21.68'	172°51'44"
L8	100.00°	21.68'	172°51'44"

LOT CURVE TABLE			
CURVE NO.	DIRECTION	LENGTH	CHORD BEARING
L9	100.00°	21.68'	172°51'44"
L10	100.00°	21.68'	172°51'44"
L11	100.00°	21.68'	172°51'44"
L12	100.00°	21.68'	172°51'44"
L13	100.00°	21.68'	172°51'44"
L14	100.00°	21.68'	172°51'44"
L15	100.00°	21.68'	172°51'44"
L16	100.00°	21.68'	172°51'44"

LOT CURVE TABLE			
CURVE NO.	DIRECTION	LENGTH	CHORD BEARING
L17	100.00°	21.68'	172°51'44"
L18	100.00°	21.68'	172°51'44"
L19	100.00°	21.68'	172°51'44"
L20	100.00°	21.68'	172°51'44"
L21	100.00°	21.68'	172°51'44"
L22	100.00°	21.68'	172°51'44"
L23	100.00°	21.68'	172°51'44"
L24	100.00°	21.68'	172°51'44"

LOT CURVE TABLE			
CURVE NO.	DIRECTION	LENGTH	CHORD BEARING
L25	100.00°	21.68'	172°51'44"
L26	100.00°	21.68'	172°51'44"
L27	100.00°	21.68'	172°51'44"
L28	100.00°	21.68'	172°51'44"
L29	100.00°	21.68'	172°51'44"
L30	100.00°	21.68'	172°51'44"
L31	100.00°	21.68'	172°51'44"
L32	100.00°	21.68'	172°51'44"

LOT CURVE TABLE			
CURVE NO.	DIRECTION	LENGTH	CHORD BEARING
L33	100.00°	21.68'	172°51'44"
L34	100.00°	21.68'	172°51'44"
L35	100.00°	21.68'	172°51'44"
L36	100.00°	21.68'	172°51'44"
L37	100.00°	21.68'	172°51'44"
L38	100.00°	21.68'	172°51'44"
L39	100.00°	21.68'	172°51'44"
L40	100.00°	21.68'	172°51'44"

LOT CURVE TABLE			
CURVE NO.	DIRECTION	LENGTH	CHORD BEARING
L41	100.00°	21.68'	172°51'44"
L42	100.00°	21.68'	172°51'44"
L43	100.00°	21.68'	172°51'44"
L44	100.00°	21.68'	172°51'44"
L45	100.00°	21.68'	172°51'44"
L46	100.00°	21.68'	172°51'44"
L47	100.00°	21.68'	172°51'44"
L48	100.00°	21.68'	172°51'44"

LOT CURVE TABLE			
CURVE NO.	DIRECTION	LENGTH	CHORD BEARING
L49	100.00°	21.68'	172°51'44"
L50	100.00°	21.68'	172°51'44"
L51	100.00°	21.68'	172°51'44"
L52	100.00°	21.68'	172°51'44"
L53	100.00°	21.68'	172°51'44"
L54	100.00°	21.68'	172°51'44"
L55	100.00°	21.68'	172°51'44"
L56	100.00°	21.68'	172°51'44"

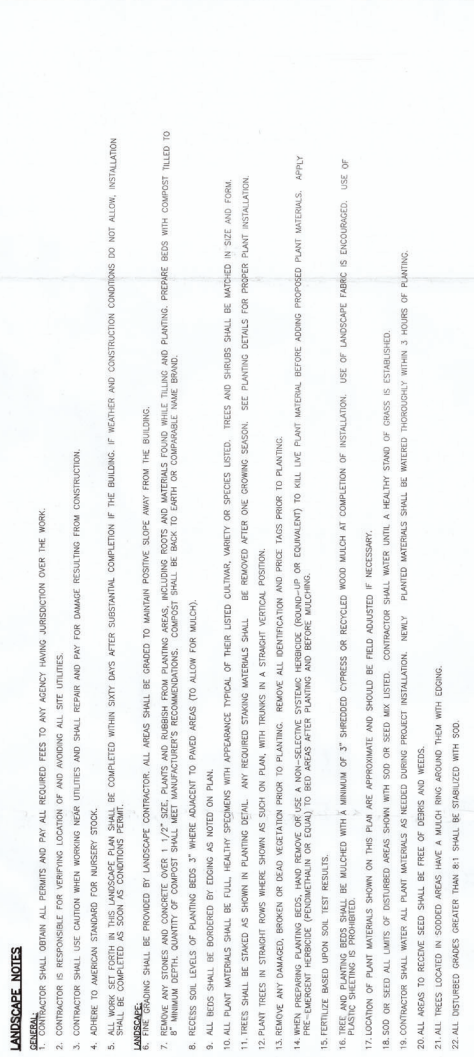
LOT CURVE TABLE			
CURVE NO.	DIRECTION	LENGTH	CHORD BEARING
L57	100.00°	21.68'	172°51'44"
L58	100.00°	21.68'	172°51'44"
L59	100.00°	21.68'	172°51'44"
L60	100.00°	21.68'	172°51'44"
L61	100.00°	21.68'	172°51'44"
L62	100.00°	21.68'	172°51'44"
L63	100.00°	21.68'	172°51'44"
L64	100.00°	21.68'	172°51'44"

Crafton Tull
SURVEYING
1800 S. SARA ROAD
TULSA, OKLAHOMA 74109
(405) 285-0641

DATE OF PREPARATION: 9/30/2021

RUBBS CONSULTING, LLC
CIVIL ENGINEERING & LAND PLANNING
1800 S. SARA ROAD
TULSA, OKLAHOMA 74109
(405) 285-0641

GRUBBS CONSULTING, LLC CERTIFICATE OF AUTHORIZATION NO. CA 5115 EXP. 06/2022



LANDSCAPE SUMMARY TABLE						
4 PLANTS/200 L ² FRONTAGE		COMMON NAME	SIZE	SPACING	POINT VALUE	% RED. POINTS
PROVED PLANTS	12	MEDIUM DECIDUOUS TREES	3"	5/7	15	100
		*AND/OR				
		SMALLER TREES, SHRUBS, PERENNIALS, CREEPERS, VINES, AND PLANTS FOR SPECIAL REQUIREMENTS AND BE LISTED UNDER SPECIAL PLANTS AND PLANTINGS			255	
TOTAL POINTS: 255						
TOTAL MIN. PROVIDED POINTS: 255						