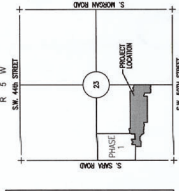


LEGEND
P.O.B.
EX
R/W
BL
U/E
D/E
P/D/E
(NR)
(ESM)
POINT OF BEGINNING
EXISTING
RIGHT-OF-WAY
BUILDING LIMIT LINE
UTILITY EASEMENT
DRAINAGE EASEMENT
PRIVATE DRAINAGE EASEMENT
NONCONFORMING AREA
EASEMENT



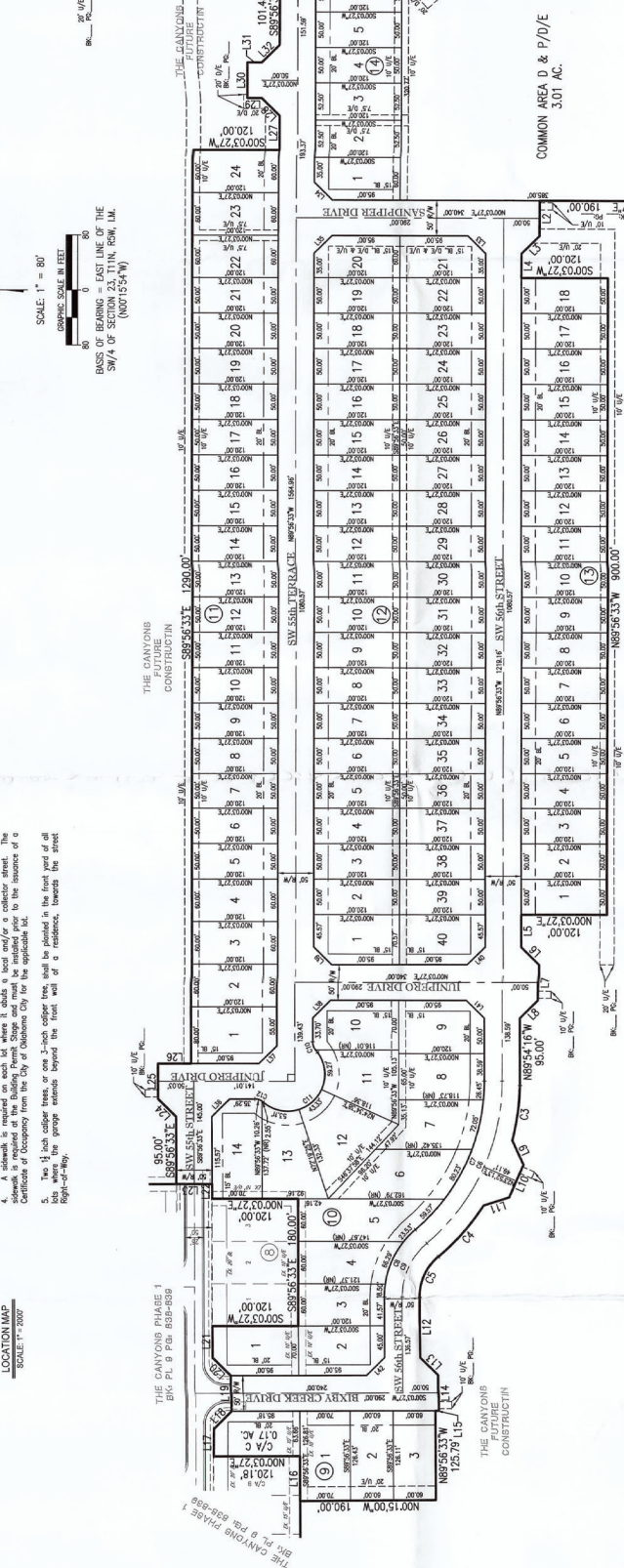
- NOTES**
- This plat of survey meets the Oklahoma Minimum Standards for the Practice of Land Surveying as adopted by the Oklahoma State Board of Licensure for Professional Engineers and Land Surveyors and shall be filed for record with the Oklahoma State Board of Licensure for Professional Engineers and Land Surveyors.
 - Monuments shall be as follows:
3/8" iron rod with a Plastic Cap stamped "C.A. 0473"
 - Maintenance of the Common Areas and Islands/Medians in Public Rights-of-Way shall be the responsibility of the Property Owners and/or Property Owners Association. No structures, storage of materials, vehicles, or other obstructions shall be placed on the common areas. Certain amenities such as, but not limited to, tables, benches, plant, and docks, shall be permitted if installed in a manner to meet the requirements of the Oklahoma City Code of Ordinances.
 - Any structure or improvement shall be subject to a final plat of survey and must be approved by the Oklahoma City Planning Department and the Oklahoma City Board of Public Works.
 - Two 1/2 inch caliber trees, or one 1/2-inch caliber tree, shall be planted in the front yard of all lots where the garage extends beyond the front wall of a residence, towards the street right-of-way.

ADDRESSES

Any addresses shown on this plat were accurate at the time this plat was filed. Addresses are subject to change and should never be relied upon in place of legal description.



NE CORNER OF SW 1/4 OF SECTION 23, T11N, R5W, IM
BASIS OF BEARING = EAST LINE OF THE SW 1/4 OF SECTION 23, T11N, R5W, IM (N07°15'54"W)

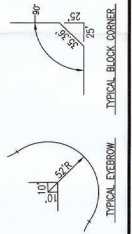


LINE #	LENGTH	DIRECTION
1	35.36'	N44° 56' 37\"
2	35.36'	N44° 56' 37\"
3	35.36'	N44° 56' 37\"
4	35.36'	N44° 56' 37\"
5	35.36'	N44° 56' 37\"
6	35.36'	N44° 56' 37\"
7	35.36'	N44° 56' 37\"
8	35.36'	N44° 56' 37\"
9	35.36'	N44° 56' 37\"
10	35.36'	N44° 56' 37\"
11	35.36'	N44° 56' 37\"
12	35.36'	N44° 56' 37\"
13	35.36'	N44° 56' 37\"
14	35.36'	N44° 56' 37\"
15	35.36'	N44° 56' 37\"
16	35.36'	N44° 56' 37\"
17	35.36'	N44° 56' 37\"
18	35.36'	N44° 56' 37\"
19	35.36'	N44° 56' 37\"
20	35.36'	N44° 56' 37\"
21	35.36'	N44° 56' 37\"
22	35.36'	N44° 56' 37\"
23	35.36'	N44° 56' 37\"
24	35.36'	N44° 56' 37\"
25	35.36'	N44° 56' 37\"
26	35.36'	N44° 56' 37\"
27	35.36'	N44° 56' 37\"
28	35.36'	N44° 56' 37\"
29	35.36'	N44° 56' 37\"
30	35.36'	N44° 56' 37\"
31	35.36'	N44° 56' 37\"
32	35.36'	N44° 56' 37\"

CURVE #	LENGTH	RADIUS	DELTA	CHORD	DIRECTION	CHORD LENGTH
1	11.86'	50.00'	90° 00' 00\"	11.86'	N44° 56' 37\"	11.86'
2	11.86'	50.00'	90° 00' 00\"	11.86'	N44° 56' 37\"	11.86'
3	11.86'	50.00'	90° 00' 00\"	11.86'	N44° 56' 37\"	11.86'
4	11.86'	50.00'	90° 00' 00\"	11.86'	N44° 56' 37\"	11.86'
5	11.86'	50.00'	90° 00' 00\"	11.86'	N44° 56' 37\"	11.86'
6	11.86'	50.00'	90° 00' 00\"	11.86'	N44° 56' 37\"	11.86'
7	11.86'	50.00'	90° 00' 00\"	11.86'	N44° 56' 37\"	11.86'
8	11.86'	50.00'	90° 00' 00\"	11.86'	N44° 56' 37\"	11.86'
9	11.86'	50.00'	90° 00' 00\"	11.86'	N44° 56' 37\"	11.86'
10	11.86'	50.00'	90° 00' 00\"	11.86'	N44° 56' 37\"	11.86'
11	11.86'	50.00'	90° 00' 00\"	11.86'	N44° 56' 37\"	11.86'
12	11.86'	50.00'	90° 00' 00\"	11.86'	N44° 56' 37\"	11.86'
13	11.86'	50.00'	90° 00' 00\"	11.86'	N44° 56' 37\"	11.86'
14	11.86'	50.00'	90° 00' 00\"	11.86'	N44° 56' 37\"	11.86'
15	11.86'	50.00'	90° 00' 00\"	11.86'	N44° 56' 37\"	11.86'
16	11.86'	50.00'	90° 00' 00\"	11.86'	N44° 56' 37\"	11.86'
17	11.86'	50.00'	90° 00' 00\"	11.86'	N44° 56' 37\"	11.86'
18	11.86'	50.00'	90° 00' 00\"	11.86'	N44° 56' 37\"	11.86'
19	11.86'	50.00'	90° 00' 00\"	11.86'	N44° 56' 37\"	11.86'
20	11.86'	50.00'	90° 00' 00\"	11.86'	N44° 56' 37\"	11.86'
21	11.86'	50.00'	90° 00' 00\"	11.86'	N44° 56' 37\"	11.86'
22	11.86'	50.00'	90° 00' 00\"	11.86'	N44° 56' 37\"	11.86'
23	11.86'	50.00'	90° 00' 00\"	11.86'	N44° 56' 37\"	11.86'
24	11.86'	50.00'	90° 00' 00\"	11.86'	N44° 56' 37\"	11.86'
25	11.86'	50.00'	90° 00' 00\"	11.86'	N44° 56' 37\"	11.86'
26	11.86'	50.00'	90° 00' 00\"	11.86'	N44° 56' 37\"	11.86'
27	11.86'	50.00'	90° 00' 00\"	11.86'	N44° 56' 37\"	11.86'
28	11.86'	50.00'	90° 00' 00\"	11.86'	N44° 56' 37\"	11.86'
29	11.86'	50.00'	90° 00' 00\"	11.86'	N44° 56' 37\"	11.86'
30	11.86'	50.00'	90° 00' 00\"	11.86'	N44° 56' 37\"	11.86'
31	11.86'	50.00'	90° 00' 00\"	11.86'	N44° 56' 37\"	11.86'
32	11.86'	50.00'	90° 00' 00\"	11.86'	N44° 56' 37\"	11.86'

FINAL PLAT OF THE CANYONS PHASE 2

A PART OF THE SW 1/4 OF SECTION 23, T11N, R5W, IM OKLAHOMA CITY, CANADIAN COUNTY, OKLAHOMA



SHEET NO. 2 OF 2
DATE: 09/27/2021
PROJECT NO. 21605300

Crafton Tull
ENGINEERING & SURVEYING
401 SOUTH MAIN STREET
TULSA, OKLAHOMA 74103
www.craftontull.com