



The City of
OKLAHOMA CITY

APPLICATION FOR CERTIFICATE OF APPROPRIATENESS

Staff Only:

Date Stamp

Zoning: HP or HL

District: JP

HPCA- 20-0017B

Received by: 11/5/20 [Signature]

NOTE: any relevant permits must be applied for and paid for separately in the Development Services Dept.

NOTE: Contact Historic Preservation Staff for final design inspection when work is complete.

Please select: ☒ New Project ☐ Revision ☐ Extension ☐ Violation Notice Issued

Location of Proposed Work (Address): 433 NW 28th St.

Legal Description of Property (lot, block, addition): JEFFERSON PARK ADD Block 020 Lot 012

Year built: 1928 Exterior wall material: Brick Floor area: 5840 sq.ft.

Itemized Work Items (List EACH ITEM proposed. Work not listed here will NOT be reviewed):

☐ New Construction ☐ Addition ☐ Fence ☐ Demolition (specify structure) _____

☐ Paving (specify) _____ ☒ Renovation (specify) _____

☐ Work not specified above _____

Replacement and/or Repair of original windows _____

Owner's Authorization

I hereby certify that all above statements and statements contained in all attached and transmitted exhibits are true to the best of my knowledge and belief. In the event this proposal is approved and begun, I agree to complete the changes in accordance with approved plans in a good and workmanlike manner. I authorize the City of Oklahoma City to enter the property for the purpose of observing and photographing the project for presentations and to ensure consistency between the approved proposal and the completed project.

☒ (If applicable): I authorize my representative to speak for me in matters regarding this application. Any agreement made by my representative regarding this proposal will be binding upon me.

Owner's Signature Jack Chamberlain

Date 10/28/2020

Name (printed) Jack Chamberlain

Organization 945 Uptown LLC

Address 5716 Oak Tree Road

Phone 405-209-7922

City, State, Zip Edmond, OK 73025

Email dayorbit@gmail.com

I prefer to be: ☐ Mailed or ☒ Emailed.

Representative Signature William "Ty" McBride

Date 10/8/2020

Name (printed) William "Ty" McBride

Organization Old Home Rescue

Address 401 S Blackwelder Ave

Phone 4055499880

City, State, Zip Oklahoma City, Ok 73108

Email ty@woodwindowrescue.com

I prefer to be: ☐ Mailed or ☒ Emailed.

Contact: ☐ Owner ☒ Representative

Is Federal money, a federal license or a federal permit included/required for any part of this project? Yes / No

If yes, what Federal agency? NA

Is the property owner pursuing the Federal Tax Credits for Rehabilitation of income producing historic properties? Yes / No (For questions concerning the federal tax credit program, telephone the State Historic Preservation Office at (405) 522-4479).

NOTE: Specific deadlines apply to submission of additional documentation or requests for appeals. Should your project be continued or denied, you are responsible for compliance with those deadlines.

APPLICATION DOCUMENTS

Address: 433 NW 28th Street



No Window Replacement on front

Scope of Work

Remove and replace existing replacement windows. Existing windows are single pane aluminum windows and are not original to the property. Proposed replacement windows are on the rear elevation and not visible from the right away.

Proposed window replacements are from Sun Windows and installed with brickmould and mullions to match adjacent original windows.

X

Documentation of Existing Conditions

Windows W26-W29 and W59 & W60 severely deteriorate and are adjacent to replacement windows. The original configuration is 8/1 double-hung. See Pictures Below:

W59 & W60

- Lower rails on the upper sash have been replaced with 2x4 Doug fir.
- Sills and Lower rail completely deteriorate.
- Jamb legs are deteriorating on the lower third.



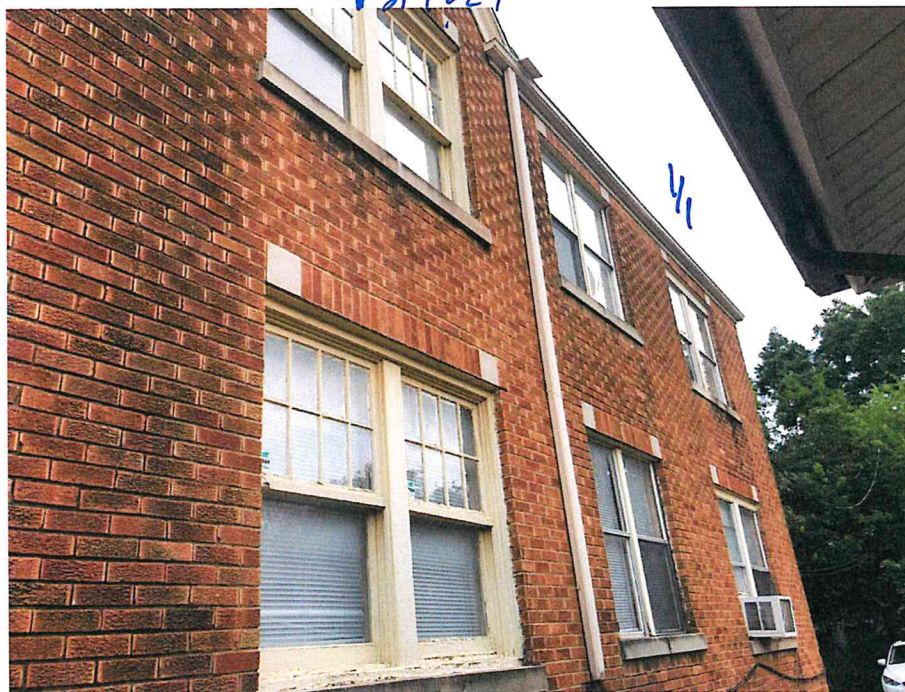
61 & 62

1/1 to match these 8/1 to 8/1 WEST above

59 & 60 8/1 to 8/1

W26-W29

- Lower rails on the upper sash have been replaced with 2x4 Doug fir.
- Sills and Lower rail completely deteriorate.
- Jamb legs are deteriorating on the lower third.



Simply

26 & 28 EAST
8/1 to 8/1

Windows W30-W58, W61 & W62 are replacement windows. These replacement windows are single pane aluminum with varying wood trim and sills. The windows are failed, inoperable, and drafty.

W30-W37

- Varying trim detail



Non-historic aluminum windows EAST

W38-W50

- Varying trim detail



North - Non-historic aluminum

W51-W62

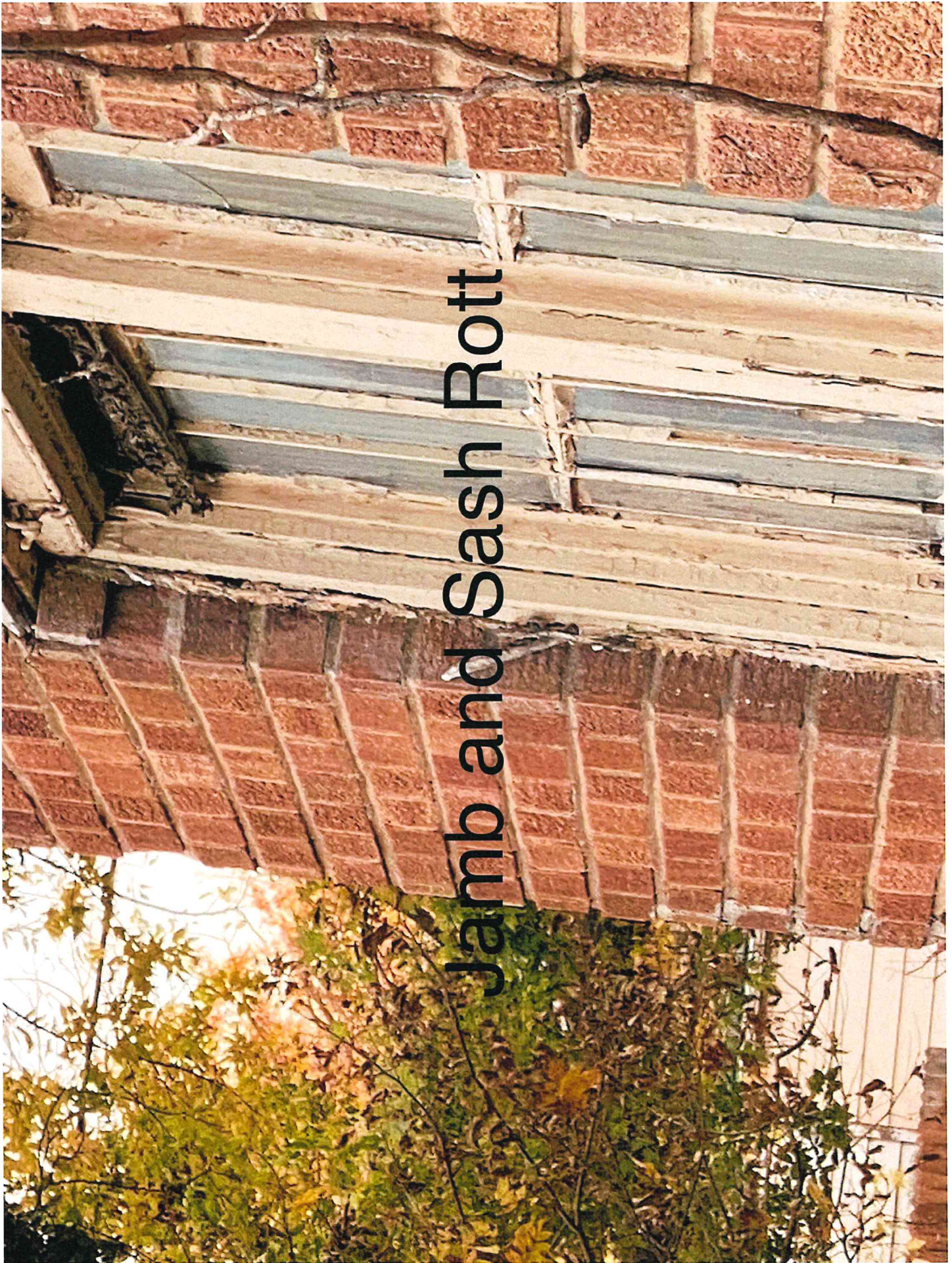
- Varying Trim Detail



West

1/1

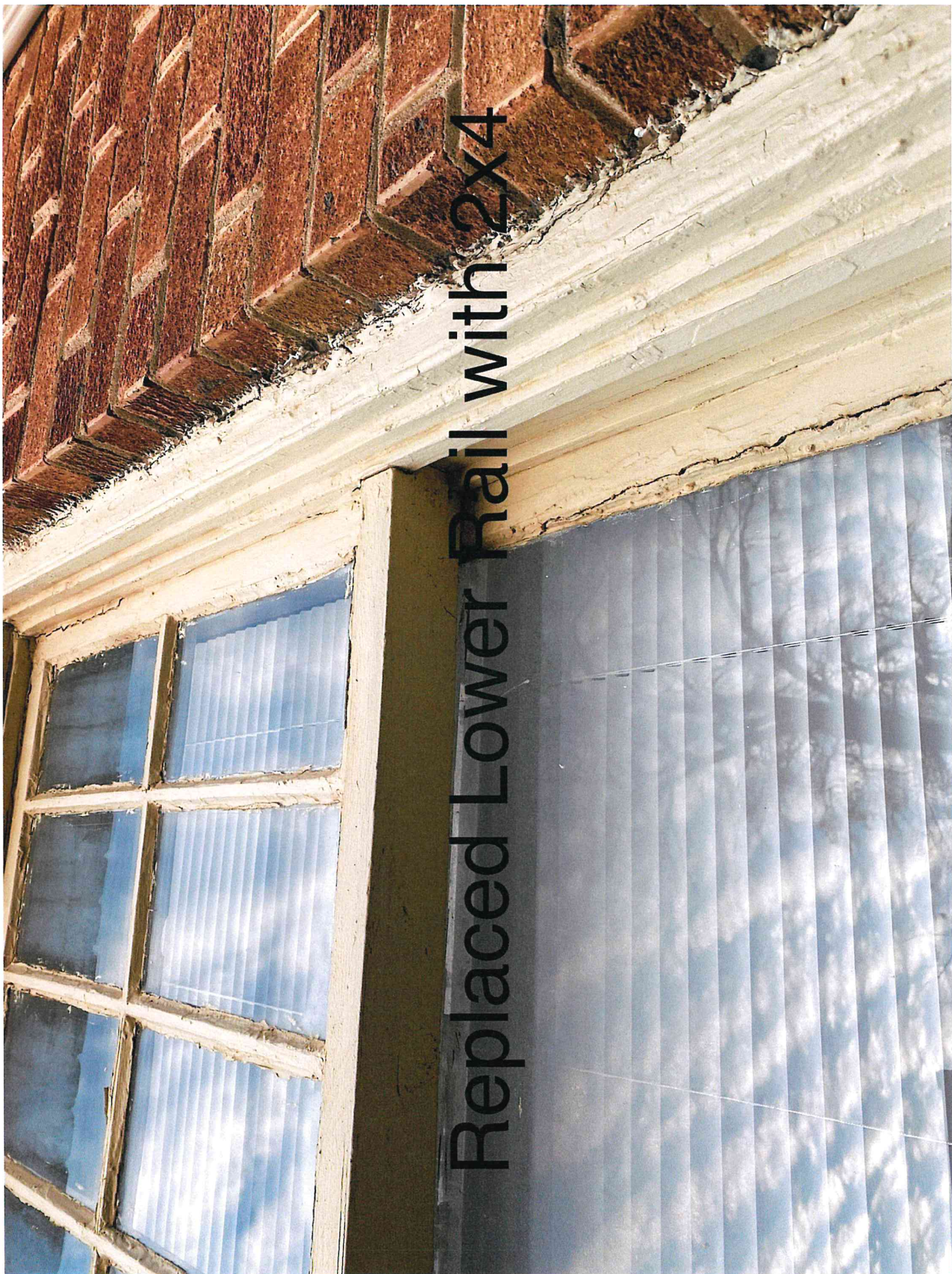
For Additional Photos Please Visit: <https://app.companycam.com/galleries/yve2BE1i>





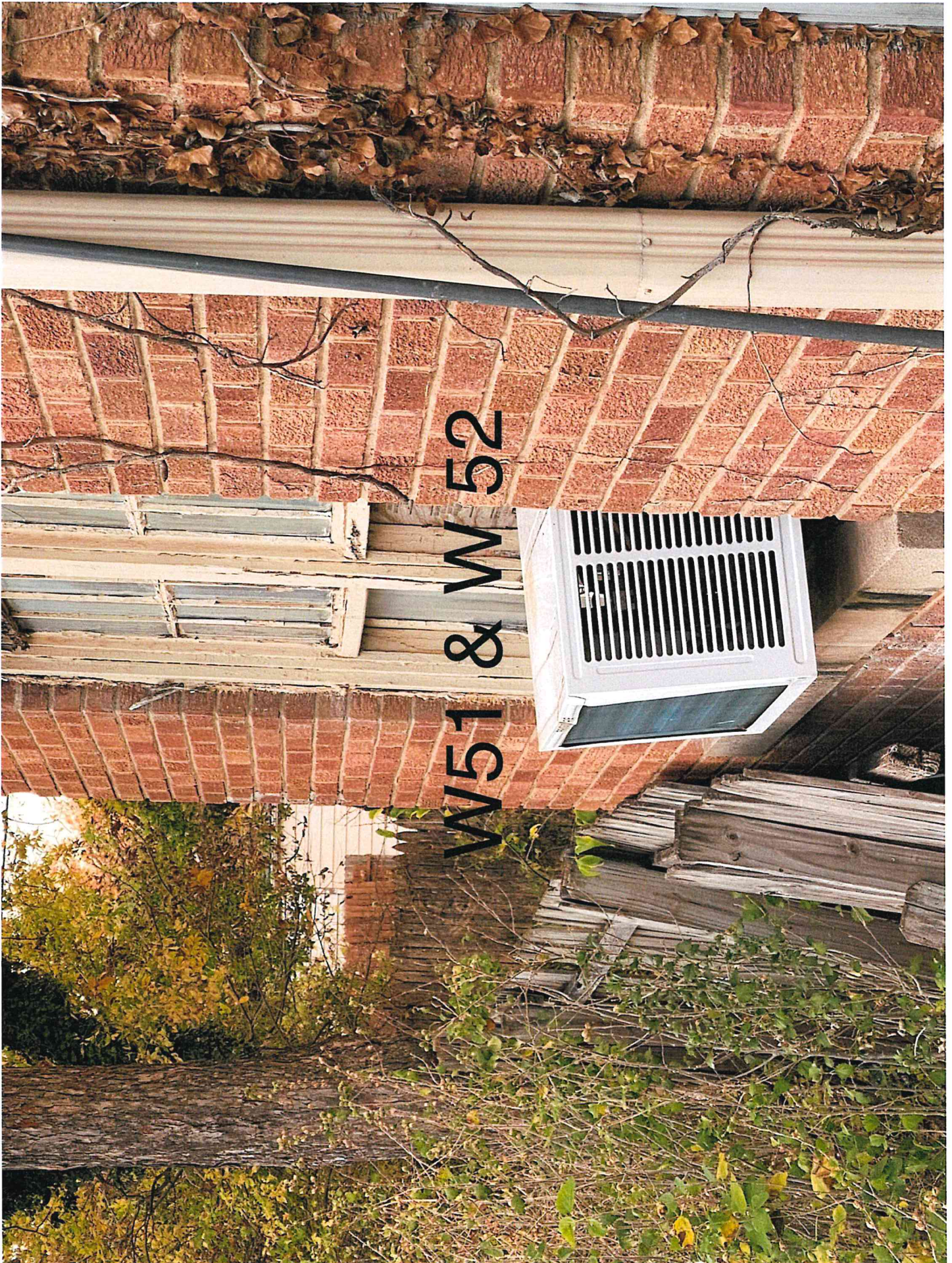


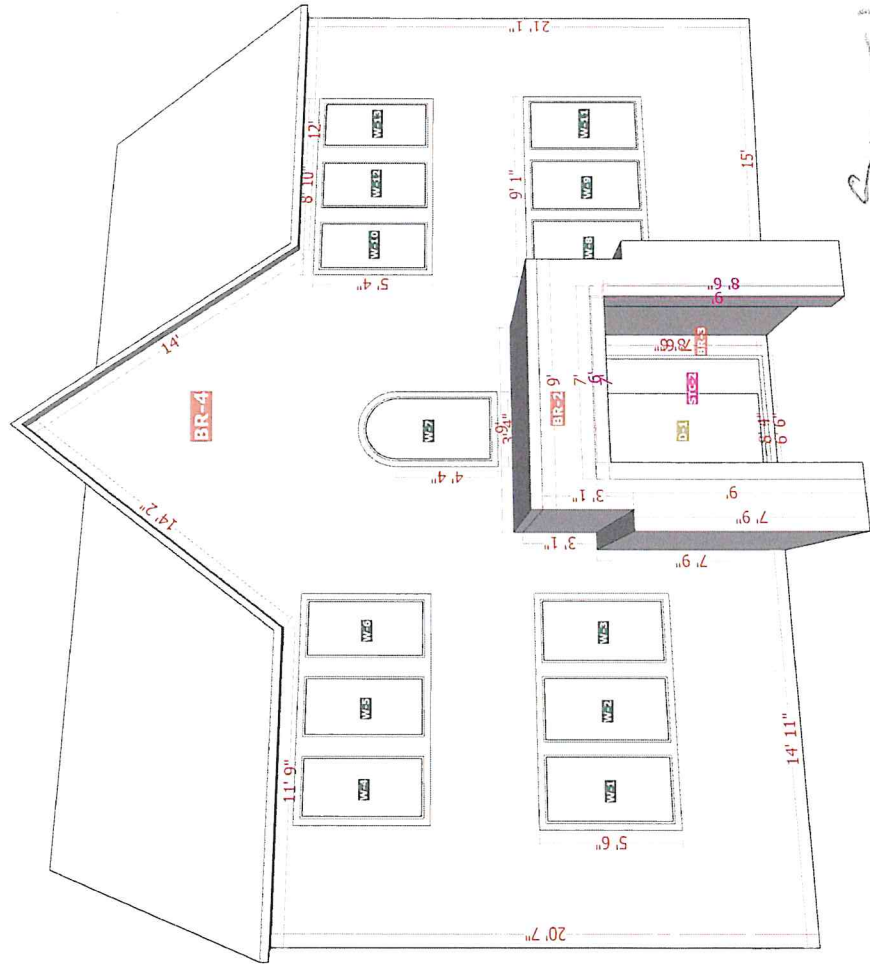
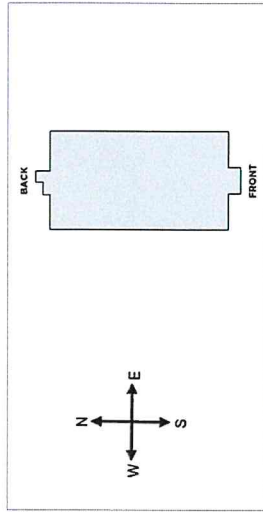




Failed Joint and Rotting Lower Rail

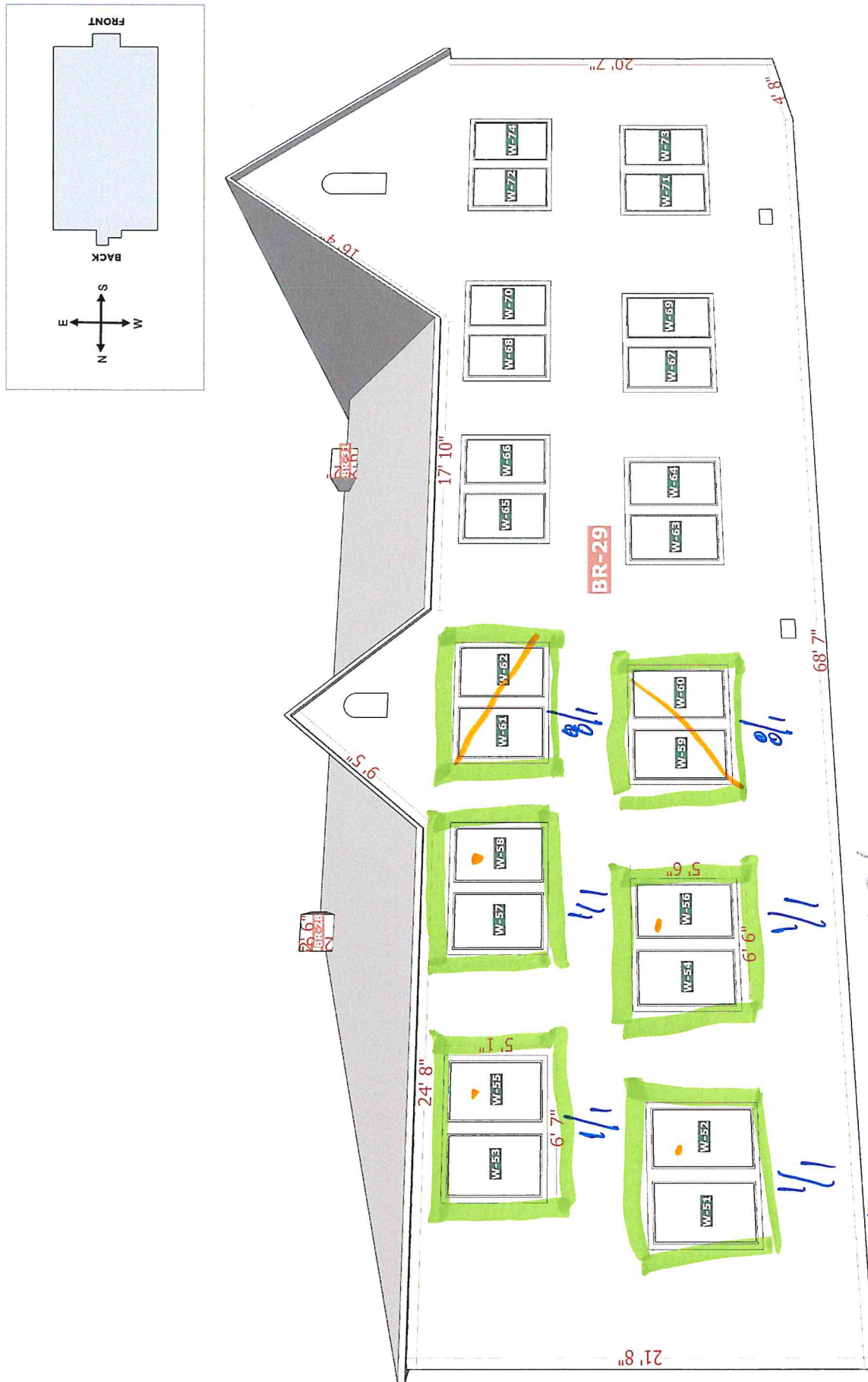






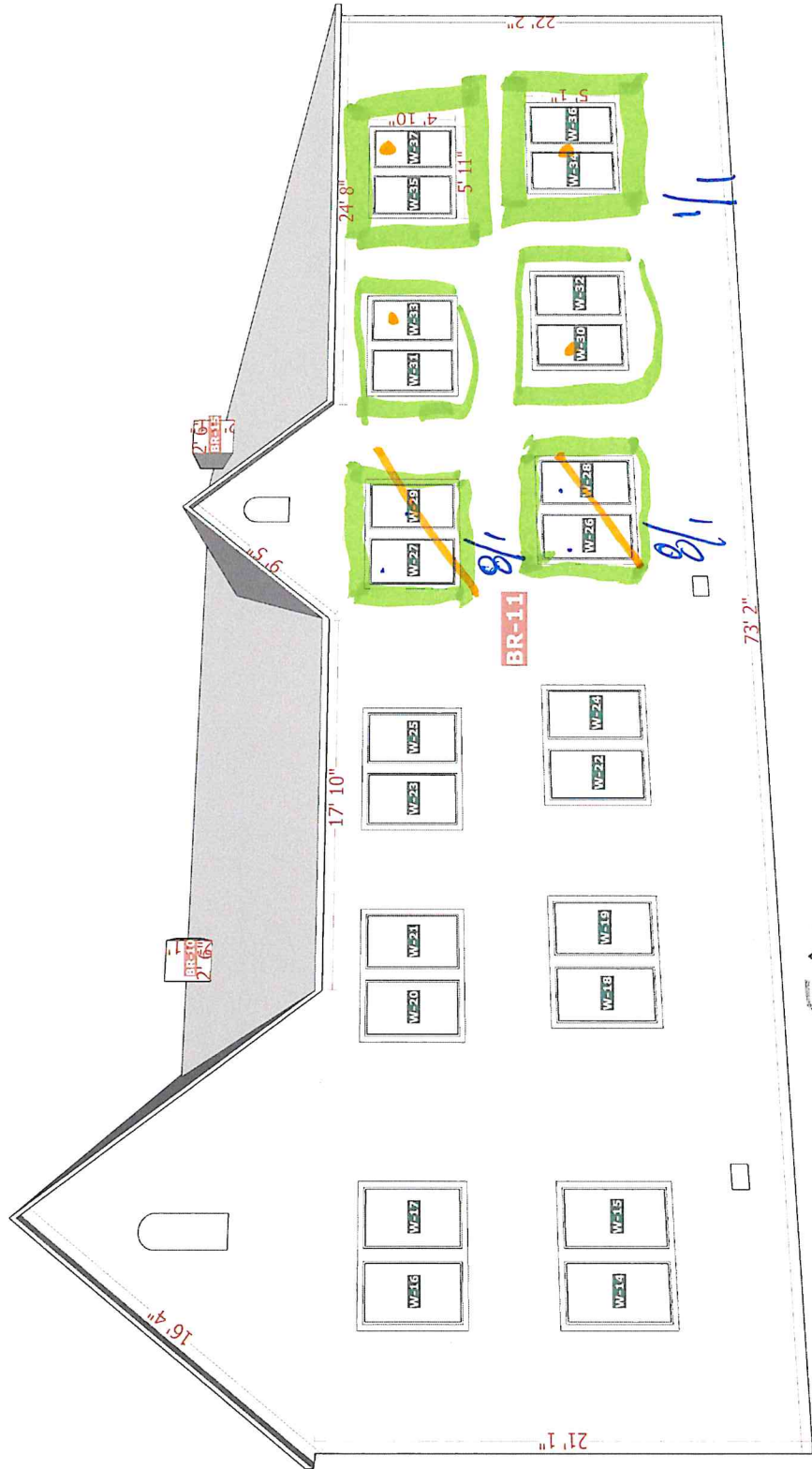
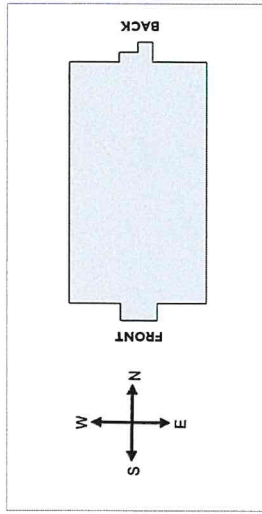
South

© 2020 HOVER Inc. All rights reserved. This document and the images, measurement data, format and contents are the exclusive property of HOVER. HOVER is the registered trademark of Hover Inc. All other brands, products and company names mentioned herein may be trademarks or registered trademarks of their respective holders.
Use of this document is subject to HOVER's Terms of Use and is provided "as is." HOVER makes no guarantees, representations or warranties of any kind, express or implied, arising by law or otherwise relating to this document or its contents or use, including but not limited to, quality, accuracy, completeness, reliability, or fitness for a particular purpose.

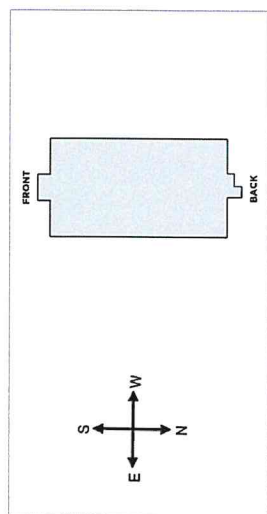


Simplex
Most

© 2020 HOVER, Inc. All rights reserved. This document and the images, measurement data, format and contents are the exclusive property of HOVER, Inc. HOVER is the registered trademark of HOVER, Inc. All other brands, products and company names mentioned herein may be trademarks or registered trademarks of their respective holders. Use of this document is subject to HOVER's Terms of Use and is provided "as is." HOVER makes no guarantees, representations or warranties of any kind, express or implied, arising by law or otherwise relating to this document or its contents or use, including but not limited to, quality, accuracy, completeness, reliability, or fitness for a particular purpose.



© 2020 HOVER Inc. All rights reserved. This document and the images, measurement data, format and contents are the exclusive property of HOVER. HOVER is the registered trademark of Hover Inc. All other brands, products and company names mentioned herein may be trademarks or registered trademarks of their respective holders.
Use of this document is subject to HOVER's Terms of Use and is provided "as is." HOVER makes no guarantees, representations or warranties of any kind, express or implied, arising by law or otherwise relating to this document or its contents or use, including but not limited to, quality, accuracy, completeness, reliability, or fitness for a particular purpose.



SCHEDULE

Quote: 437621

Ship Date: Quote Not
Ordered

Zone: 99

Order Date: Quote Not Ordered

Project Name: C

Quote Name: Jack Chamberlain

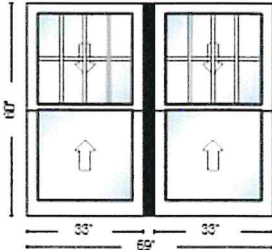
Dealer: Old Home Rescue

PO:

Line# 100-1

Unit Size: 69" X 60"

Rough Opening: 69 1/2" X 60 1/2"



Viewed From Exterior

Quantity: x 1

Room: W26 & W28

USA Clad Architectural Double Hung 69 x 60

Unit Width = Custom, Unit Height = Custom

Exterior Color = Sand, Interior Color = Bright White

Dual Glazed , Clear IG

Sash Locks W/ Flanged Keeper, Dark Bronze

No Screen

Unit 1 Bottom, 2 Bottom: None

Unit 1 Top, 2 Top: 5/8" SDL, Colonial, Sand, Raised, Shadow Bar = Yes, 4W2H

Nailing Fin Removed, Sill Trim Options = 1 1/8" Sill Nosing

Jamb Depth = 4 9/16", Overall Unit Depth = 6

Glass Stops = Traditional

Sill Angle = 14

Vertical Factory 3" thick, 60" length

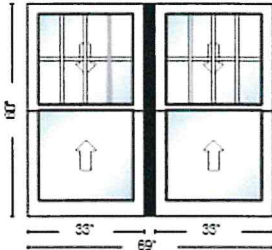
----- Line Item Notes -----

Interior Wood Mull Caps For Spread Mulls Are Provided By Customer

Line# 200-1

Unit Size: 69" X 60"

Rough Opening: 69 1/2" X 60 1/2"



Viewed From Exterior

Quantity: x 1

Room: W27 & W29

USA Clad Architectural Double Hung 69 x 60

Unit Width = Custom, Unit Height = Custom

Exterior Color = Sand, Interior Color = Bright White

Dual Glazed , Clear IG

Sash Locks W/ Flanged Keeper, Dark Bronze

No Screen

Unit 1 Bottom, 2 Bottom: None

Unit 1 Top, 2 Top: 5/8" SDL, Colonial, Sand, Raised, Shadow Bar = Yes, 4W2H

Nailing Fin Removed, Sill Trim Options = 1 1/8" Sill Nosing

Jamb Depth = 4 9/16", Overall Unit Depth = 6

Glass Stops = Traditional

Sill Angle = 14

Vertical Factory 3" thick, 60" length

----- Line Item Notes -----

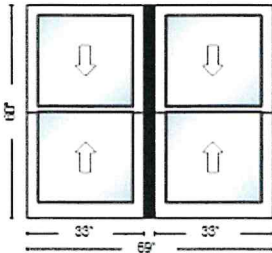
Interior Wood Mull Caps For Spread Mulls Are Provided By Customer

Line# 300-1

Unit Size: 69" X 60"

Rough Opening: 69 1/2" X 60 1/2"

Room: W30 & W32



Viewed From Exterior

Quantity: x 1

USA Clad Architectural Double Hung 69 x 60

Unit Width = Custom, Unit Height = Custom

Exterior Color = Sand, Interior Color = Bright White

Dual Glazed, Clear IG

Sash Locks W/ Flanged Keeper, Dark Bronze

No Screen

Nailing Fin Removed, Sill Trim Options = 1 1/8" Sill Nosing

Jamb Depth = 4 9/16", Overall Unit Depth = 6

Glass Stops = Traditional

Sill Angle = 14

Vertical Factory 3" thick, 60" length

----- Line Item Notes -----

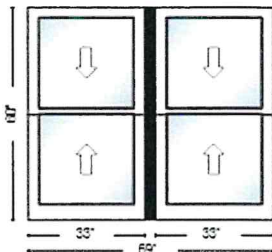
Interior Wood Mull Caps For Spread Mulls Are Provided By Customer

Line# 400-1

Unit Size: 69" X 60"

Rough Opening: 69 1/2" X 60 1/2"

Room: W31 & W32



Viewed From Exterior

Quantity: x 1

USA Clad Architectural Double Hung 69 x 60

Unit Width = Custom, Unit Height = Custom

Exterior Color = Sand, Interior Color = Bright White

Dual Glazed, Clear IG

Sash Locks W/ Flanged Keeper, Dark Bronze

No Screen

Nailing Fin Removed, Sill Trim Options = 1 1/8" Sill Nosing

Jamb Depth = 4 9/16", Overall Unit Depth = 6

Glass Stops = Traditional

Sill Angle = 14

Vertical Factory 3" thick, 60" length

----- Line Item Notes -----

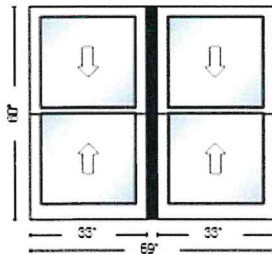
Interior Wood Mull Caps For Spread Mulls Are Provided By Customer

Line# 500-1

Unit Size: 69" X 60"

Rough Opening: 69 1/2" X 60 1/2"

Room: W34 & W36



Viewed From Exterior

Quantity: x 1

USA Clad Architectural Double Hung 69 x 60

Unit Width = Custom, Unit Height = Custom

Exterior Color = Sand, Interior Color = Bright White

Dual Glazed, Clear IG

Sash Locks W/ Flanged Keeper, Dark Bronze

No Screen

Nailing Fin Removed, Sill Trim Options = 1 1/8" Sill Nosing

Jamb Depth = 4 9/16", Overall Unit Depth = 6

Glass Stops = Traditional

Sill Angle = 14

Vertical Factory 3" thick, 60" length

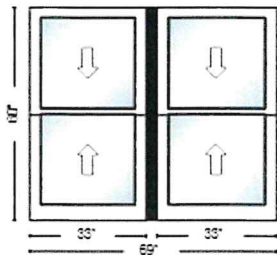
----- Line Item Notes -----

Interior Wood Mull Caps For Spread Mulls Are Provided By Customer

Line# 600-1

Unit Size: 69" X 60"

Rough Opening: 69 1/2" X 60 1/2"



Viewed From Exterior

Quantity: x 1

Room: W35 & W37

USA Clad Architectural Double Hung 69 x 60

Unit Width = Custom, Unit Height = Custom

Exterior Color = Sand, Interior Color = Bright White

Dual Glazed , Clear IG

Sash Locks W/ Flanged Keeper, Dark Bronze

No Screen

Nailing Fin Removed, Sill Trim Options = 1 1/8" Sill Nosing

Jamb Depth = 4 9/16", Overall Unit Depth = 6

Glass Stops = Traditional

Sill Angle = 14

Vertical Factory 3" thick, 60" length

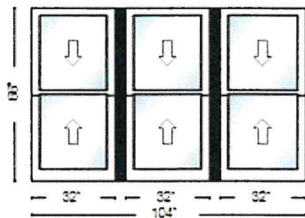
----- Line Item Notes -----

Interior Wood Mull Caps For Spread Mulls Are Provided By Customer

Line# 700-1

Unit Size: 104" X 66"

Rough Opening: 104 1/2" X 66 1/2"



Viewed From Exterior

Quantity: x 1

Room: W38, W39, W40

USA Clad Architectural Double Hung 104 x 66

Unit Width = 32" (2-8"), Unit Height = Custom

Exterior Color = Sand, Interior Color = Bright White

Dual Glazed , Clear IG

Sash Locks W/ Flanged Keeper, Dark Bronze

No Screen

Nailing Fin Removed, Sill Trim Options = 1 1/8" Sill Nosing

Jamb Depth = 4 9/16", Overall Unit Depth = 6

Glass Stops = Traditional

Sill Angle = 14

Mulls 1: Vertical Factory 4" thick, 66" length

Mulls 2: Vertical Factory 4" thick, 66" length

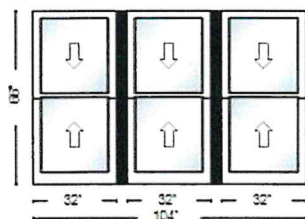
----- Line Item Notes -----

Interior Wood Mull Caps For Spread Mulls Are Provided By Customer

Line# 800-1

Unit Size: 104" X 66"

Rough Opening: 104 1/2" X 66 1/2"



Viewed From Exterior

Quantity: x 1

Room: W41, W42, W43

USA Clad Architectural Double Hung 104 x 66

Unit Width = 32" (2-8"), Unit Height = Custom

Exterior Color = Sand, Interior Color = Bright White

Dual Glazed , Clear IG

Sash Locks W/ Flanged Keeper, Dark Bronze

No Screen

Nailing Fin Removed, Sill Trim Options = 1 1/8" Sill Nosing

Jamb Depth = 4 9/16", Overall Unit Depth = 6

Glass Stops = Traditional

Sill Angle = 14

Mulls 1: Vertical Factory 4" thick, 66" length

Mulls 2: Vertical Factory 4" thick, 66" length

----- Line Item Notes -----

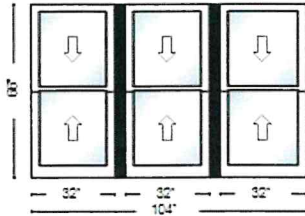
Interior Wood Mull Caps For Spread Mulls Are Provided By Customer

Line# 900-1

Unit Size: 104" X 66"

Rough Opening: 104 1/2" X 66 1/2"

Room: W45, W46, W48



Viewed From Exterior

Quantity: x 1

USA Clad Architectural Double Hung 104 x 66

Unit Width = 32" (2-8"), Unit Height = Custom

Exterior Color = Sand, Interior Color = Bright White

Dual Glazed , Clear IG

Sash Locks W/ Flanged Keeper, Dark Bronze

No Screen

Nailing Fin Removed, Sill Trim Options = 1 1/8" Sill Nosing

Jamb Depth = 4 9/16", Overall Unit Depth = 6

Glass Stops = Traditional

Sill Angle = 14

Mulls 1: Vertical Factory 4" thick, 66" length

Mulls 2: Vertical Factory 4" thick, 66" length

----- Line Item Notes -----

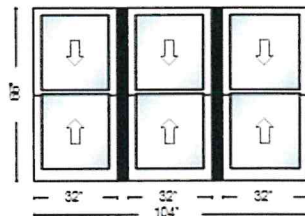
Interior Wood Mull Caps For Spread Mulls Are Provided By Customer

Line# 1000-1

Unit Size: 104" X 66"

Rough Opening: 104 1/2" X 66 1/2"

Room: W47, W49, W50



Viewed From Exterior

Quantity: x 1

USA Clad Architectural Double Hung 104 x 66

Unit Width = 32" (2-8"), Unit Height = Custom

Exterior Color = Sand, Interior Color = Bright White

Dual Glazed , Clear IG

Sash Locks W/ Flanged Keeper, Dark Bronze

No Screen

Nailing Fin Removed, Sill Trim Options = 1 1/8" Sill Nosing

Jamb Depth = 4 9/16", Overall Unit Depth = 6

Glass Stops = Traditional

Sill Angle = 14

Mulls 1: Vertical Factory 4" thick, 66" length

Mulls 2: Vertical Factory 4" thick, 66" length

----- Line Item Notes -----

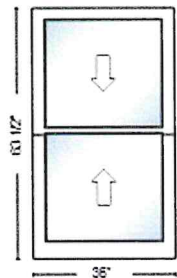
Interior Wood Mull Caps For Spread Mulls Are Provided By Customer

Line# 1100-1

Unit Size: 36" X 63 1/2"

Rough Opening: 36 1/2" X 64"

Room: W44



Viewed From Exterior

Quantity: x 1

USA Clad Architectural Double Hung 36 x 63.5

Unit Width = 36" (3-0"), Unit Height = 63 1/2" (5-4")

Exterior Color = Sand, Interior Color = Bright White

Dual Glazed , Clear IG

Sash Locks W/ Flanged Keeper, Dark Bronze

No Screen

Nailing Fin Removed, Sill Trim Options = 1 1/8" Sill Nosing

Jamb Depth = 4 9/16", Overall Unit Depth = 6

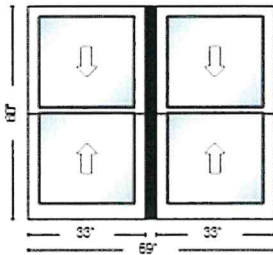
Glass Stops = Traditional

Sill Angle = 14

Line# 1200-1

Unit Size: 69" X 60"

Rough Opening: 69 1/2" X 60 1/2"



Viewed From Exterior

Quantity: x 1

Room: W51 & W52

USA Clad Architectural Double Hung 69 x 60

Unit Width = Custom, Unit Height = Custom

Exterior Color = Sand, Interior Color = Bright White

Dual Glazed , Clear IG

Sash Locks W/ Flanged Keeper, Dark Bronze

No Screen

Nailing Fin Removed, Sill Trim Options = 1 1/8" Sill Nosing

Jamb Depth = 4 9/16", Overall Unit Depth = 6

Glass Stops = Traditional

Sill Angle = 14

Vertical Factory 3" thick, 60" length

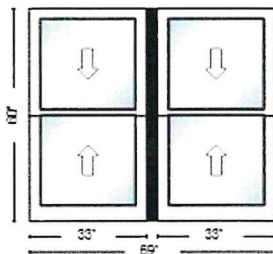
----- Line Item Notes -----

Interior Wood Mull Caps For Spread Mulls Are Provided By Customer

Line# 1300-1

Unit Size: 69" X 60"

Rough Opening: 69 1/2" X 60 1/2"



Viewed From Exterior

Quantity: x 1

Room: W53 & W55

USA Clad Architectural Double Hung 69 x 60

Unit Width = Custom, Unit Height = Custom

Exterior Color = Sand, Interior Color = Bright White

Dual Glazed , Clear IG

Sash Locks W/ Flanged Keeper, Dark Bronze

No Screen

Nailing Fin Removed, Sill Trim Options = 1 1/8" Sill Nosing

Jamb Depth = 4 9/16", Overall Unit Depth = 6

Glass Stops = Traditional

Sill Angle = 14

Vertical Factory 3" thick, 60" length

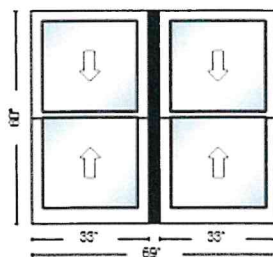
----- Line Item Notes -----

Interior Wood Mull Caps For Spread Mulls Are Provided By Customer

Line# 1400-1

Unit Size: 69" X 60"

Rough Opening: 69 1/2" X 60 1/2"



Viewed From Exterior

Quantity: x 1

Room: W54 & W56

USA Clad Architectural Double Hung 69 x 60

Unit Width = Custom, Unit Height = Custom

Exterior Color = Sand, Interior Color = Bright White

Dual Glazed , Clear IG

Sash Locks W/ Flanged Keeper, Dark Bronze

No Screen

Nailing Fin Removed, Sill Trim Options = 1 1/8" Sill Nosing

Jamb Depth = 4 9/16", Overall Unit Depth = 6

Glass Stops = Traditional

Sill Angle = 14

Vertical Factory 3" thick, 60" length

----- Line Item Notes -----

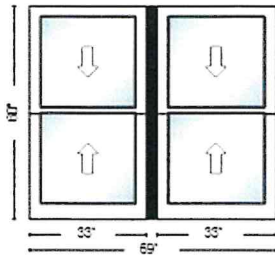
Interior Wood Mull Caps For Spread Mulls Are Provided By Customer

Line# 1500-1

Unit Size: 69" X 60"

Rough Opening: 69 1/2" X 60 1/2"

Room: W57 & W58



Viewed From Exterior

Quantity: x 1

USA Clad Architectural Double Hung 69 x 60

Unit Width = Custom, Unit Height = Custom

Exterior Color = Sand, Interior Color = Bright White

Dual Glazed , Clear IG

Sash Locks W/ Flanged Keeper, Dark Bronze

No Screen

Nailing Fin Removed, Sill Trim Options = 1 1/8" Sill Nosing

Jamb Depth = 4 9/16", Overall Unit Depth = 6

Glass Stops = Traditional

Sill Angle = 14

Vertical Factory 3" thick, 60" length

----- Line Item Notes -----

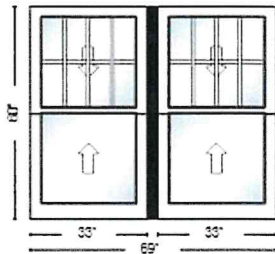
Interior Wood Mull Caps For Spread Mulls Are Provided By Customer

Line# 1600-1

Unit Size: 69" X 60"

Rough Opening: 69 1/2" X 60 1/2"

Room: W59 & W60



Viewed From Exterior

Quantity: x 1

USA Clad Architectural Double Hung 69 x 60

Unit Width = Custom, Unit Height = Custom

Exterior Color = Sand, Interior Color = Bright White

Dual Glazed , Clear IG

Sash Locks W/ Flanged Keeper, Dark Bronze

No Screen

Unit 1 Bottom, 2 Bottom: None

Unit 1 Top, 2 Top: 5/8" SDL, Colonial, Sand, Raised, Shadow Bar = Yes, 4W2H

Nailing Fin Removed, Sill Trim Options = 1 1/8" Sill Nosing

Jamb Depth = 4 9/16", Overall Unit Depth = 6

Glass Stops = Traditional

Sill Angle = 14

Vertical Factory 3" thick, 60" length

----- Line Item Notes -----

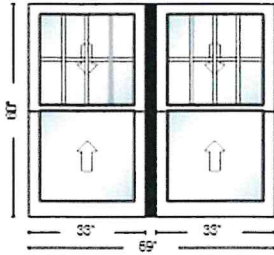
Interior Wood Mull Caps For Spread Mulls Are Provided By Customer

Line# 1700-1

Unit Size: 69" X 60"

Rough Opening: 69 1/2" X 60 1/2"

Room: W61 & W62



Viewed From Exterior

Quantity: x 1

USA Clad Architectural Double Hung 69 x 60

Unit Width = Custom, Unit Height = Custom

Exterior Color = Sand, Interior Color = Bright White

Dual Glazed , Clear IG

Sash Locks W/ Flanged Keeper, Dark Bronze

No Screen

Unit 1 Bottom, 2 Bottom: None

Unit 1 Top, 2 Top: 5/8" SDL, Colonial, Sand, Raised, Shadow Bar = Yes, 4W2H

Nailing Fin Removed, Sill Trim Options = 1 1/8" Sill Nosing

Jamb Depth = 4 9/16", Overall Unit Depth = 6

Glass Stops = Traditional

Sill Angle = 14

Vertical Factory 3" thick, 60" length

----- Line Item Notes -----

Interior Wood Mull Caps For Spread Mulls Are Provided By Customer

CADH

CLAD ARCHITECTURAL
DOUBLE HUNG



Clad Architectural Double Hung

The Sun Clad Architectural Double Hung, or CADH, is a premium wood double hung window with a powder coated extruded aluminum exterior.

Highlights:

- Extruded Aluminum Exterior
- Integrated Nail Fin (part of the frame extrusion)
- Built In Water Management System
- Powder Coated Exterior Finish
- Low-E Insulated Glass with Argon
- Duralite™ Glass Spacer System
- Ponderosa Pine Interior
- Complete Weather Seal Protection

Features:

- Vertical Raise and Lower Sash Operation
- Tilt-In Sashes
- Finger Release Tilt-Sash Latches
- Traditional Block and Tackle Balance System
- Hybrid Balance System (on oversized units)
- Concealed Jamb System
- Vinyl Fixed Jamb Tracks
- Locking-When-Tilted Sash Balance Shoes
- Historically Correct Sash Profiles
- Extruded Aluminum Powder Coated Screen Frames
- Standard Jamb Depth = 4-9/16"

Operation:

- Both sashes raise and lower for ventilation
- Both sashes tilt inward to access exterior sash surfaces
- Cam-action locks secure sashes when closed
- Finger release latches allow sashes to be tilted inward
- Pivoting balance shoes lock in position when sash is tilted inward
- Block and tackle balances support raising and lowering of the sashes

Sash Split Configurations:

- Standard (50/50), Cottage (40/60), Oriel (60/40)

Sizes:

- widths = 20", 24", 28", 32", 40", 44", 48"
- heights = 35-1/2", 39-1/2", 47-1/2", 51-1/2", 55-1/2", 61-1/2", 63-1/2", 71-1/2", 75-1/2", 77-1/2"
- additional sizes available by special order

Options: (see sunwindows.com for more details)

Hardware Finishes: White, Tan, Brown, Dark Bronze, Black,

Brushed Nickel, Brushed Chrome, Antique Brass, Polished Brass

Exterior Colors: 21 Standard, 12 Upgrade Feature, 29 Premium Metallic Finishes

Exterior Trim: Extruded Aluminum Brick Mold and Casing

Interior Finishes: Unfinished, Primed, Painted

Glass Options: 270 Low-E, 366 Low-E, Solar Passive, Tempered Glass

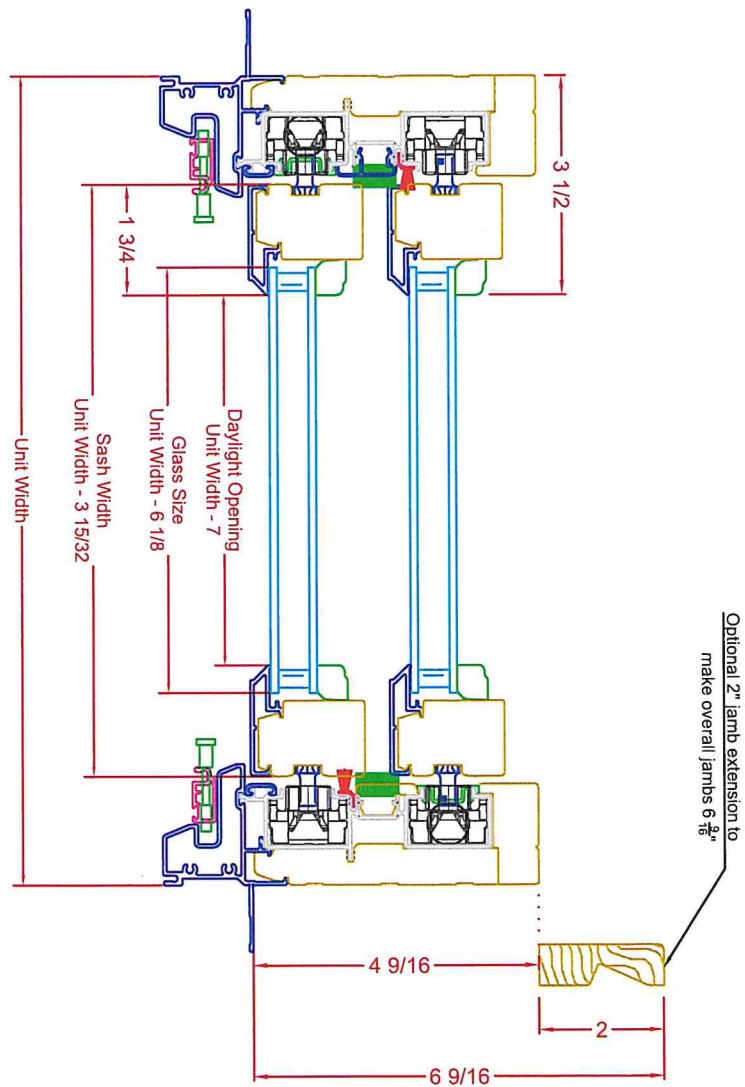
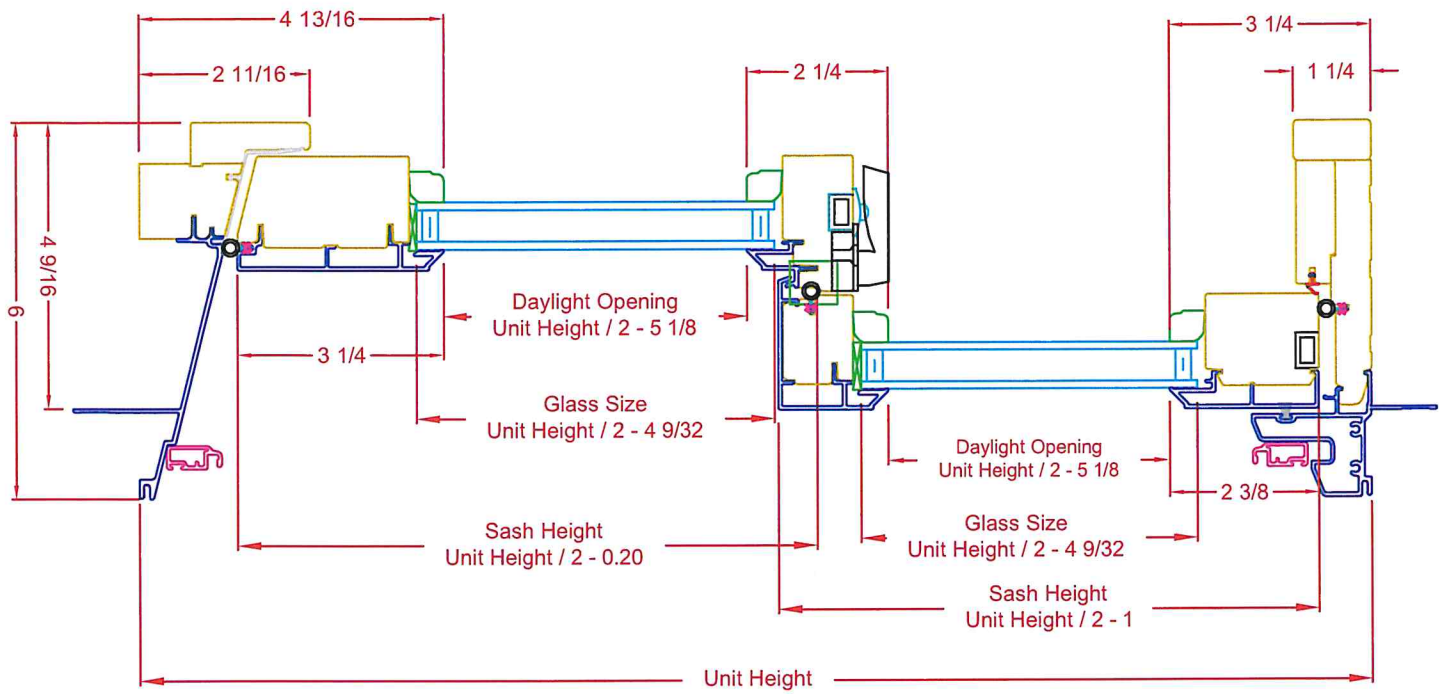
Glazing Options: Dual Glazed, Triple Glazed

Grille Types: Simulated Divided Lite (raised and low-profile)

Wood Surround, Grilles Between Glass

Grille Patterns: 12 double hung patterns, custom patterns





| | | | |
|----------------|--------------------|----------------|--------------------|
| Project | <i>Chamberlain</i> | Address | <i>433 NW 28th</i> |
|----------------|--------------------|----------------|--------------------|

