

December 2, 2024

City of Oklahoma City Utilities Division
100 North Walker
Oklahoma City, OK 73102

Dear Trey Perdue:

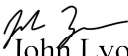
Hydra-Stop is the sole designer and manufacturer of the Hydra-Stop System. The Hydra-Stop System is an under-pressure pipe maintenance and repair system engineered to allow the repair and maintenance of water, wastewater and other fluid systems without interrupting service or requiring system shutdown.

The Hydra-Stop System allows any of its four standalone machines to expand capability and function using interchangeable components and expansion kits: Hydra-Tapper 4"-12" pressure tapping, Hydra-Stopper 4"-12" line stopping, Insta-Valve 250® 4"-12" valve insertion. Covered by United States Patent No. 9,829,141,B2 and United States Patent No. 9,644,779,B2 and IVP 250® 16" valve insertion (Patent 8627843,B2). All design and invention rights are reserved. Additional Patents Pending.

Hydra-Stop Fittings, Insta-Valve 250® insertion valves and IVP 250® insertion valves are engineered specifically to be used with the Hydra-Stop System and are an integral component of the Hydra-Stop System.

If you require any additional information or documentation, please do not hesitate to contact me.

Sincerely,


John Lyons
CFO
Hydra-Stop



EQUIPMENT PROPOSAL

City of Oklahoma City Utilities Division

PREPARED FOR: Trey Perdue

PREPARED ON: 12/2/2024

 1-800-538-7867

 hydra-stopsales@hydra-stop.com

 www.hydra-stop.com



Dear Trey Perdue,

Thank you for your interest in Hydra-Stop and our solutions for control. Please find your requested proposal for the following equipment on the next page; a summary of your proposal is below for review:

The equipment configuration you requested will provide City of Oklahoma City Utilities Division with the capabilities to insert Insta-Valve insertion valves. Your equipment proposal also includes one training sessions (2 days each) and all the required hand tools required to install Insta-Valve insertion valves. The only additional equipment City of Oklahoma City Utilities Division will be a truck to transport your equipment.

Your proposal includes the items listed below:

- 4"-12" IV Equipment with Hydraulic drive
- Hydraulic Power Pack

As the largest insertion valve and line stop manufacturer globally, Hydra-Stop has provided water control solutions to municipalities, private water utilities, and contractors worldwide for over 35 years. Our priority is to provide you with reliable, cost-effective products and exceptional customer service and support — helping you stay on-time and on-budget. For more information on our full range of solutions for control, please visit our website at www.hydra-stop.com.

We appreciate the opportunity to present this quotation and thank you again for your consideration. Please do not hesitate to contact me directly should you have any further questions.

Best regards,

A handwritten signature in black ink, appearing to read "Brian Eaton", with a stylized flourish at the end.

Brian Eaton – Strategic Accounts Manager
Hydra-Stop

TABLE OF CONTENTS

Proposal	4
Who We are	5
Meet Your Team	6
Cost Savings	7
Customer Story	8
In Good Company	9
Testimonials	9
Our Clients	10



144 Tower Drive | Burr Ridge, IL 60527
Phone: (708)389-5111 | Fax: (708)389-5125

PROPOSAL: HSPQ25311-01

DATE: 12-02-2024

Customer ID: OKLA-OK

Bill To

City of Oklahoma City Utilities Division
Trey Perdue
10401 West Stanley Draper Drive
Oklahoma City, OK 73165
United States
Phone (405) 297-1496
Fax

Ship To

City of Oklahoma City Utilities Division
Trey Perdue
10401 West Stanley Draper Drive
Oklahoma City, OK 73165
United States
Phone (405) 297-1496
Fax

Incoterms	Freight	Lead Time	Terms
Ex-Works	Prepay & Add	6 - 8 Weeks ARO	Net 30

Line	Part Number	Description	Qty	Unit Price	Ext. Price
1	3-TAPMACH-OSY-250	Tapping Machine Unit, OS&Y, 250 PSI	1	\$9,219.00	\$9,219.00
2	3-TMMDRVHYD-412	4-12 Hyd Motor Restraint Assembly	1	\$9,252.00	\$9,252.00
3	3-TOOLKIT-412	4-12 Installation Equipment Tool Kit	1	\$1,189.00	\$1,189.00
4	3-480IV-250	4-8 IV Base Equipment Unit, 250PSI	1	\$27,338.00	\$27,338.00
5	3-112IV-250	10-12 IV Add-On Equipment	1	\$39,169.00	\$39,169.00
6	3-HYDPOWERPACK-01	HYD POWER PACK UNIT 13 HP, 9 GPM, MR@1800 PSI, WITH HOSES AND QUICK CONNECTS	1	\$7,880.00	\$7,880.00
7	TRAINING	EQUIPMENT TRAINING	1	\$6,314.00	\$6,314.00
8	OTHER-HYDRA-STOP	ESTIMATED FREIGHT	1	\$1,234.00	\$1,234.00

Quotation is Valid for 30 days from Quotation Date.

The sale of product (s) or services provided by Hydra-Stop shall be governed by the attached Terms and Conditions. Pricing is good for 30 days from the quotation date. Hydra-Stop's offer to sell products to or to provide services to you ("Customer") is expressly limited by Customer's acceptance of these Terms and Conditions, as evidenced by Customer's issuance of a purchase order for products (s) or services, or Customer's payment for any additional products or services under the purchase order. Additional or different terms or conditions proposed by Customer (including those that may be contained in Customer's purchase order) shall be void and of no effect unless a written agreement to contrary is provided by

WHO WE ARE

OUR COMPANY

- Largest Insertion Valve and Line Stopping Fitting manufacturer
- Providing solutions for water control for over 35 years
- Support thousands of municipalities and contractors around the world

OUR PURPOSE

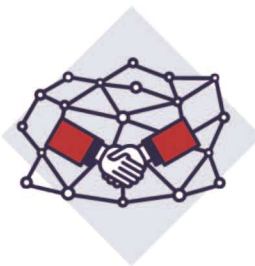
- Provide solutions for the 20-50% of valves in municipalities systems that no longer operate
- Help municipalities manage, maintain and provide solutions for aging water systems
- Provide municipalities and private water utilities with the easiest and cost-effective solutions to serve their communities
- Minimize the disruption of the most basic human need...water

OUR VALUES



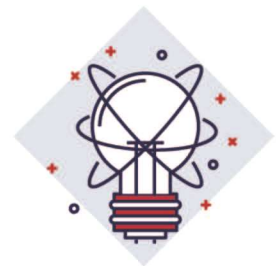
INCLUSION

- Building Enduring Relationships
- Seeking Diversity and Inviting Inspiration
- Winning Together



INTEGRITY

- Chasing Perfection — Achieving Excellence
- Trust in Every Action
- Process Over Pride



INNOVATION

- Big Ideas, Disciplined Actions
- Unique Products for Unique Problems
- Embracing an Entrepreneurial Spirit

MEET YOUR TEAM

MAIN CONTACTS

**BRIAN EATON**

Strategic Accounts Manager

E: beaton@hydra-stop.com

M: 919-240-3575

DAN SPRATT

Inside Sales

E: dspratt@hydra-stop.com

T: 630-756-5223



TRAINING CONTACT

**DANNY RICHARDSON**

Training and Technical Support
Manager

E: drichardson@hydra-stop.com

M: 321-863-8601

OTHER CONTACTS

**DAN HUFFAKER**

Regional Manager

E: dhuffaker@hydra-stop.com

M: 504-505-6049

STEVE ROEHRIG

VP, Sales and Marketing

E: sroehrig@hydra-stop.com

T: 630-756-5212

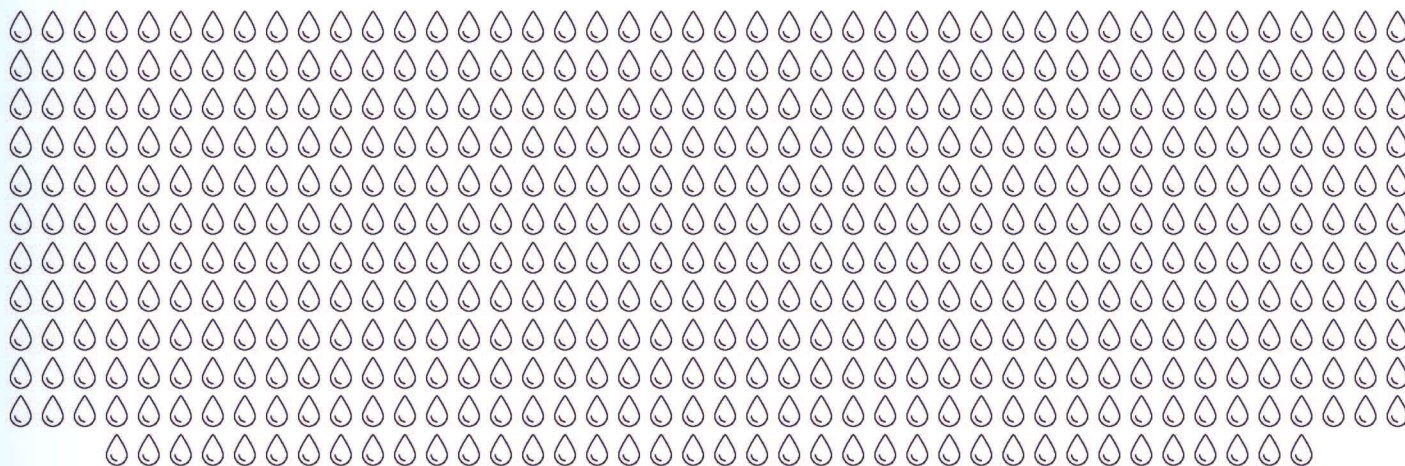
M: 708-768-3864



COST SAVINGS

528.4 MILLION GALLONS

Average Amount of Water Lost per Year to System Leakage*



*Source: AWWA White Paper, "The State of Water Loss Control in Drinking Water Utilities"

SAVE WATER AND MONEY

by Putting a Hydra-Stop Solution to Work for You

100%

Eliminated Costs
Associated with
System Shutdown



44%

Incremental Cost Savings
by Utilizing a
Hydra-Stop Solution



12 MONTHS

Average Length of Time
to See a Return on
Your Investment



CUSTOMER STORY

THE CLIENT

City of Steubenville — Providing water, wastewater, and solid waste service to nearly 19,000 residents and businesses in Ohio.



THE PROBLEM

Looking for solutions to control their issue, and make further repairs without large service disruptions, the city developed a Valve Replacement Project which utilized four 12-inch and one 6-inch Insta-Valve 250 insertion valves.

To isolate the leaking valve, Mortimer Excavating was contracted to install one 12-inch and one 6-inch insertion valve around the source of the leak. The **two installations were completed within 8 hours** and the city was able to create a tighter isolation area of only one block — affecting service to just three buildings.

The City of Steubenville was able to remove the 12-inch leaking valve as well as remove a 6-inch valve with a broken valve stem. The city has finally put a stop to a costly leak that previously couldn't be contained and now benefits from five new, permanent control points.

THE PROBLEM

A 12-inch valve in the downtown area of Steubenville was leaking approximately 150-200 gallons of water per minute from its bonnet. The city attempted to isolate the leak with existing valves surrounding the area but were unsuccessful. The city then tried moving the isolation area out two city blocks in each direction from the source, affecting service to four city blocks which contain multiple businesses and restaurants.

By this point, the valve had been leaking for about a month, costing the city somewhere between 6.5 to 8.7 million gallons in water loss.

THE RESULT

James Jenkins, Water Superintendent for the City of Steubenville, said “We had a great experience with the installation and functionality of Hydra-Stop’s Insta-Valve 250 insertion valve. We were able to replace existing valves easily with little-to-no affect to our customers’ water service or quality.”

The City of Steubenville was **able to stop a very costly leak of millions of gallons of water** loss and **avoided widespread shutdown** and the costs associated with shutdown. The Insta-Valve 250 insertion valve provided **targeted control during emergency maintenance** which minimized service disruption.

The success of the project was even covered on the local news. To watch the segment, please follow the link: <http://bit.ly/SteubenvilleIV250>.

TESTIMONIALS

Hydra-Stop LLC always goes above and beyond to support us. Our division originally purchased equipment from them 15 years ago and it's still holding up nicely. We required some retraining and John came on site 5 times to do demos with us. He demonstrated how to properly use the equipment and made sure we were well trained. He even helped us retrofit the **equipment to meet our needs**. Their materials are of high quality and they are also able to deliver to us with short notice. Hydra-Stop is always a phone call away and has provided continued support.

— **Miami-Dade Water and Sewer Department**

I started my own water maintenance business back in 2014 and have worked exclusively with Hydra-Stop products. I find the Insta-Valves and Line Stop Fittings **easy to install** and I work with Chad on a regular basis. They are **always available to provide support** and help me resolve any issues that arise. Hydra-Stop provides good equipment and I will continue to work with them; there is no need to look elsewhere.

— **Construction Service of Indiana**

Hearne is a typical small town with big infrastructure problems. The majority of the water valves in town are not operational or have been lost over time. Hydra-stop is **an easy to use solution** that is allowing our water department to take control of our system with almost no impact on our citizens. Purchasing Hydra-Stop has amounted to **huge savings** in contractor costs and is easy enough to use that our crews successfully install a valve after only one day of training.

— **City of Hearne, Texas**

Florida Flow Control is known for being industry leaders in specialty water and wastewater services; **our go to for water solutions and equipment has been Hydra-Stop since 2009**. If we weren't happy with them we wouldn't be working with them, and we use them almost exclusively. The Hydra-Stop LLC team is always willing to come out to our sites and frequently check in with us. No complaints here.

— **Florida Flow Control**

IN **GOOD COMPANY**

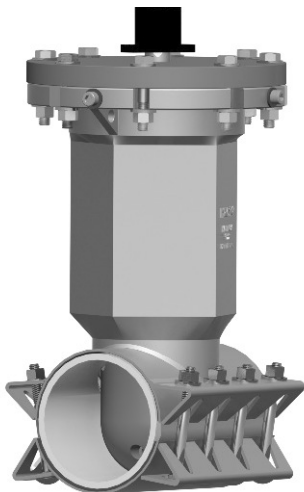
SELECTION OF CLIENTS



How to purchase the Insta-Valve 250 Patriot Insertion Valve

- 1. Select the IV 250 Valve Body which meets your requirements. (Based on O.D. of pipe.)
- 2. Select the IV 250 Valve Cartridge which meets your requirements. (Based on I.D. of pipe and open left or open right.)
- 3. Place your order.

START HERE -> Step 1) Select the Insta-Valve 250 Patriot Valve Body which meets your requirements. (Based on O.D. of pipe.)



Nominal Size	Valve Body OD Range	HS Part Number	Description	List Price
4"	4.35-4.65	25450250-CS-N	4", 4.35 - 4.65, IV 250 Body, CS FLG, 304HW, non-AIS	\$2,442
	4.65-4.95	25480250-CS-N	4", 4.65 - 4.95, IV 250 Body, CS FLG, 304HW, non-AIS	\$2,442
	4.98-5.28	25513250-CS-N	4", 4.98 - 5.28, IV 250 Body, CS FLG, 304HW, non-AIS	\$2,442
	5.07-5.37	25522250-CS-N	4", 5.07 - 5.37, IV 250 Body, CS FLG, 304HW, non-AIS	\$2,442
	5.35-5.65	25550250-CS-N	4", 5.35 - 5.65, IV 250 Body, CS FLG, 304HW, non-AIS	\$2,442
6"	6.48-6.78	25663250-CS-N	6", 6.48 - 6.78, IV 250 Body, CS FLG, 304HW, non-AIS	\$2,853
	6.75-7.05	25690250-CS-N	6", 6.75 - 7.05, IV 250 Body, CS FLG, 304HW, non-AIS	\$2,853
	7.05-7.35	25720250-CS-N	6", 7.05 - 7.35, IV 250 Body, CS FLG, 304HW, non-AIS	\$2,853
	7.21-7.51	25736250-CS-N	6", 7.21 - 7.51, IV 250 Body, CS FLG, 304HW, non-AIS	\$2,853
	7.35-7.65	25750250-CS-N	6", 7.35 - 7.65, IV 250 Body, CS FLG, 304HW, non-AIS	\$2,853
8"	8.48-8.78	25863250-CS-N	8", 8.48 - 8.78, IV 250 Body, CS FLG, 304HW, non-AIS	\$3,230
	8.90-9.20	25905250-CS-N	8", 8.90 - 9.20, IV 250 Body, CS FLG, 304HW, non-AIS	\$3,230
	9.17-9.47	25932250-CS-N	8", 9.17 - 9.47, IV 250 Body, CS FLG, 304HW, non-AIS	\$3,230
	9.35-9.65	25950250-CS-N	8", 9.35 - 9.65, IV 250 Body, CS FLG, 304HW, non-AIS	\$3,230
	9.55-9.85	25970250-CS-N	8", 9.55 - 9.85, IV 250 Body, CS FLG, 304HW, non-AIS	\$3,230
10"	10.60-10.90	251075250-CS-N	10", 10.60 - 10.90, IV 250 Body, CS FLG, 304HW, non-AIS	\$6,040
	10.95-11.25	251110250-CS-N	10", 10.95 - 11.25, IV 250 Body, CS FLG, 304HW, non-AIS	\$6,040
	11.15-11.45	251130250-CS-N	10", 11.15 - 11.45, IV 250 Body, CS FLG, 304HW, non-AIS	\$6,040
	11.35-11.65	251150250-CS-N	10", 11.35 - 11.65, IV 250 Body, CS FLG, 304HW, non-AIS	\$6,040
	11.85-12.15	251200250-CS-N	10", 11.85 - 12.15, IV 250 Body, CS FLG, 304HW, non-AIS	\$6,040
12"	12.60-12.90	251275250-CS-N	12", 12.60 - 12.90, IV 250 Body, CS FLG, 304HW, non-AIS	\$7,109
	13.05-13.35	251320250-CS-N	12", 13.05 - 13.35, IV 250 Body, CS FLG, 304HW, non-AIS	\$7,109
	13.35-13.65	251350250-CS-N	12", 13.35 - 13.65, IV 250 Body, CS FLG, 304HW, non-AIS	\$7,109
	13.60-13.90	251375250-CS-N	12", 13.60 - 13.90, IV 250 Body, CS FLG, 304HW, non-AIS	\$7,109
	14.05-14.35	251420250-CS-N	12", 14.05 - 14.35, IV 250 Body, CS FLG, 304HW, non-AIS	\$7,109
	14.25-14.55	251440250-CS-N	12", 14.25 - 14.55, IV 250 Body, CS FLG, 304HW, non-AIS	\$7,109

Note: Valve body includes epoxy coated carbon steel bonnet flange and all required 304 stainless-steel installation hardware. Optional domestic stainless-steel bonnet flange available for purchase. See section 3.

Continue to Step 2) Select the Insta-Valve 250 Patriot Valve Cartridge which meets your requirements on following page.



How to purchase the Insta-Valve 250 Patriot Insertion Valve

Step 2) Select the Insta-Valve 250 Patriot Valve Cartridge which meets your requirements. (Based on I.D. of pipe and open left or open right.)

4"-12" INSTA-VALVE 250 PATRIOT **OPEN LEFT** VALVE CARTRIDGES (**BLACK** Operating Nut)



Nominal Size	Valve Body ID Range	Part Number	Description	List Price
4"	3.75+	25CARTLH04-250	4" Open Left Cartridge, IV250	\$1,675
6"	5.75+	25CARTLH06-250	6" Open Left Cartridge, IV250	\$1,831
	5.45-5.75	25CARTLH06-250-U5.5	6" Open Left Cartridge, IV250 5.5 Undersized	\$2,194
8"	7.80+	25CARTLH08-250	8" Open Left Cartridge, IV250	\$2,068
	7.40-7.80	25CARTLH08-250-U7.5	8" Open Left Cartridge, IV250 7.5 Undersized	\$2,637
	7.40-7.80	25CARTLH08-250-U7.5-AC	8" Open Left Cartridge, IV250 7.5 Undersized AC	\$2,637
10"	9.70+	25CARTLH10-250	10" Open Left Cartridge, IV250	\$3,033
	9.40-9.70	25CARTLH10-250-U9.5	10" Open Left Cartridge, IV250 9.5 Undersized	\$3,485
	9.40-9.70	25CARTLH10-250-U9.5-AC	10" Open Left Cartridge, IV250 9.5 Undersized AC	\$3,485
12"	11.70+	25CARTLH12-250	12" Open Left Cartridge, IV250	\$3,588
	11.00-11.40	25CARTLH12-250-U11.1	12" Open Left Cartridge, IV250 11.1 Undersized	\$4,324
	11.40-11.70	25CARTLH12-250-U11.5	12" Open Left Cartridge, IV250 11.5 Undersized	\$4,218
	11.40-11.70	25CARTLH12-250-U11.5-AC	12" Open Left Cartridge, IV250 11.5 Undersized AC	\$4,218

Note: Valve cartridges include operating nut, operating nut retention nut and friction washer
Undersized valve cartridges require the use of undersized cutters. See Hydra-Core Pipe Wall Sampling Kit operating instructions for reference.
Undersized AC valve cartridges must be used in AC applications with undersized inside diameters.

4"-12" INSTA-VALVE 250 PATRIOT **OPEN RIGHT** VALVE CARTRIDGES (**RED** Operating Nut)



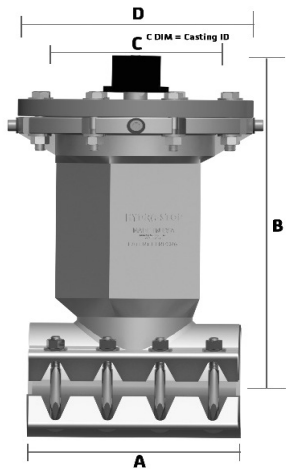
Nominal Size	Valve Body ID Range	Part Number	Description	List Price
4"	3.75+	25CARTRH04-250	4" Open Right Cartridge, IV250	\$1,675
6"	5.75+	25CARTRH06-250	6" Open Right Cartridge, IV250	\$1,831
	5.45-5.75	25CARTRH06-250-U5.5	6" Open Right Cartridge, IV250 5.5 Undersized	\$2,194
8"	7.80+	25CARTRH08-250	8" Open Right Cartridge, IV250	\$2,068
	7.40-7.80	25CARTRH08-250-U7.5	8" Open Right Cartridge, IV250 7.5 Undersized	\$2,637
	7.40-7.80	25CARTRH08-250-U7.5-AC	8" Open Right Cartridge, IV250 7.5 Undersized AC	\$2,637
10"	9.70+	25CARTRH10-250	10" Open Right Cartridge, IV250	\$3,033
	9.40-9.70	25CARTRH10-250-U9.5	10" Open Right Cartridge, IV250 9.5 Undersized	\$3,485
	9.40-9.70	25CARTRH10-250-U9.5-AC	10" Open Right Cartridge, IV250 9.5 Undersized AC	\$3,485
12"	11.70+	25CARTRH12-250	12" Open Right Cartridge, IV250	\$3,588
	11.00-11.40	25CARTRH12-250-U11.1	12" Open Right Cartridge, IV250 11.1 Undersized	\$4,324
	11.40-11.70	25CARTRH12-250-U11.5	12" Open Right Cartridge, IV250 11.5 Undersized	\$4,218
	11.40-11.70	25CARTRH12-250-U11.5-AC	12" Open Right Cartridge, IV250 11.5 Undersized AC	\$4,218

Note: Valve cartridges include operating nut, operating nut retention nut and friction washer
Undersized valve cartridges require the use of undersized cutters. See Hydra-Core Pipe Wall Sampling Kit operating instructions for reference.
Undersized AC valve cartridges must be used in AC applications with undersized inside diameters.



How to purchase the Insta-Valve 250 Patriot Insertion Valve

Step 3) Place your order.



Weights and Dims					
Size	A	B	C	D	Approx. Weight
4"	12"	18.6	8.4	13.5	138 lbs
6"	12"	21.5	8.4	13.5	173 lbs
8"	16"	24.6	8.4	13.5	229 lbs
10"	24	30	17	19	370 lbs
12"	24	33	17	19	425 lbs

Other Specifications
Valve Body Minimum Test Pressure: 1.5 times system working pressure
Valve Body Maximum Test Pressure: 375 psi, Maximum Working Pressure: 250 psi

Proprietary Information: This property of Hydra-Stop shall not be used, reproduced or distributed without written consent. All design and invention rights are reserved. covered by United States Patent No. 9,829,141,B2 and United States Patent No. 9,644,779,B2. Additional Patents Pending.

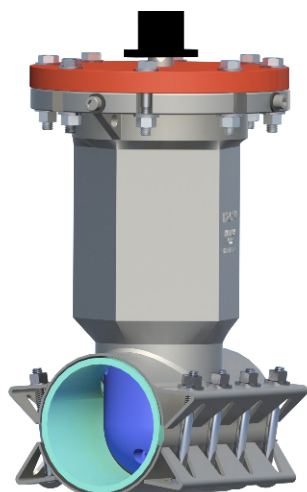


How to purchase the Insta-Valve 250 Patriot Insertion Valve

1. Select the IV 250 Valve Body which meets your requirements. (Based on O.D. of pipe.)
2. Select the IV 250 Valve Cartridge which meets your requirements. (Based on I.D. of pipe and open left or open right.)
3. **Place your order.**

START HERE ->

Step 1) Select the Insta-Valve 250 Patriot Valve Body which meets your requirements. (Based on O.D. of pipe.)



Nominal Size	Valve Body OD Range	HS Part Number	Description	List Price
4"	4.35-4.65	25450250-CS	4", 4.35 - 4.65, IV 250 Body, CS FLG, 304HW, AIS	\$2,918
	4.65-4.95	25480250-CS	4", 4.65 - 4.95, IV 250 Body, CS FLG, 304HW, AIS	\$2,918
	4.98-5.28	25513250-CS	4", 4.98 - 5.28, IV 250 Body, CS FLG, 304HW, AIS	\$2,918
	5.07-5.37	25522250-CS	4", 5.07 - 5.37, IV 250 Body, CS FLG, 304HW, AIS	\$2,918
	5.35-5.65	25550250-CS	4", 5.35 - 5.65, IV 250 Body, CS FLG, 304HW, AIS	\$2,918
6"	6.48-6.78	25663250-CS	6", 6.48 - 6.78, IV 250 Body, CS FLG, 304HW, AIS	\$3,325
	6.75-7.05	25690250-CS	6", 6.75 - 7.05, IV 250 Body, CS FLG, 304HW, AIS	\$3,325
	7.05-7.35	25720250-CS	6", 7.05 - 7.35, IV 250 Body, CS FLG, 304HW, AIS	\$3,325
	7.21-7.51	25736250-CS	6", 7.21 - 7.51, IV 250 Body, CS FLG, 304HW, AIS	\$3,325
	7.35-7.65	25750250-CS	6", 7.35 - 7.65, IV 250 Body, CS FLG, 304HW, AIS	\$3,325
8"	8.48-8.78	25863250-CS	8", 8.48 - 8.78, IV 250 Body, CS FLG, 304HW, AIS	\$3,702
	8.90-9.20	25905250-CS	8", 8.90 - 9.20, IV 250 Body, CS FLG, 304HW, AIS	\$3,702
	9.17-9.47	25932250-CS	8", 9.17 - 9.47, IV 250 Body, CS FLG, 304HW, AIS	\$3,702
	9.35-9.65	25950250-CS	8", 9.35 - 9.65, IV 250 Body, CS FLG, 304HW, AIS	\$3,702
	9.55-9.85	25970250-CS	8", 9.55 - 9.65, IV 250 Body, CS FLG, 304HW, AIS	\$3,702
10"	10.60-10.90	251075250-CS	10", 10.60 - 10.90, IV 250 Body, CS FLG, 304HW, AIS	\$7,234
	10.95-11.25	251110250-CS	10", 10.95 - 11.25, IV 250 Body, CS FLG, 304HW, AIS	\$7,234
	11.15-11.45	251130250-CS	10", 11.15 - 11.45, IV 250 Body, CS FLG, 304HW, AIS	\$7,234
	11.35-11.65	251150250-CS	10", 11.35 - 11.65, IV 250 Body, CS FLG, 304HW, AIS	\$7,234
	11.85-12.15	251200250-CS	10", 11.85 - 12.15, IV 250 Body, CS FLG, 304HW, AIS	\$7,234
12"	12.60-12.90	251275250-CS	12", 12.60 - 12.90, IV 250 Body, CS FLG, 304HW, AIS	\$8,299
	13.05-13.35	251320250-CS	12", 13.05 - 13.35, IV 250 Body, CS FLG, 304HW, AIS	\$8,299
	13.35-13.65	251350250-CS	12", 13.35 - 13.65, IV 250 Body, CS FLG, 304HW, AIS	\$8,299
	13.60-13.90	251375250-CS	12", 13.60 - 13.90, IV 250 Body, CS FLG, 304HW, AIS	\$8,299
	14.05-14.35	251420250-CS	12", 14.05 - 14.35, IV 250 Body, CS FLG, 304HW, AIS	\$8,299
	14.25-14.55	251440250-CS	12", 14.25 - 14.55, IV 250 Body, CS FLG, 304HW, AIS	\$8,299

Note: Valve body includes epoxy coated carbon steel bonnet flange and all required AIS 304 stainless-steel installation hardware. Optional domestic stainless-steel bonnet flange available for purchase. See section 3.
Optional domestic valve body hardware available for purchase.

Continue to Step 2) Select the Insta-Valve 250 Patriot Valve Cartridge which meets your requirements on following page.



How to purchase the Insta-Valve 250 Patriot Insertion Valve

Step 2) Select the Insta-Valve 250 Patriot Valve Cartridge which meets your requirements. (Based on I.D. of pipe and open left or open right.)

4"-12" INSTA-VALVE 250 PATRIOT **OPEN LEFT** VALVE CARTRIDGES (**BLACK** Operating Nut)



Nominal Size	Valve Body ID Range	Part Number	Description	List Price
4"	3.75+	25CARTLH04-250	4" Open Left Cartridge, IV250	\$1,675
6"	5.75+	25CARTLH06-250	6" Open Left Cartridge, IV250	\$1,831
	5.45-5.75	25CARTLH06-250-U5.5	6" Open Left Cartridge, IV250 5.5 Undersized	\$2,194
8"	7.80+	25CARTLH08-250	8" Open Left Cartridge, IV250	\$2,068
	7.40-7.80	25CARTLH08-250-U7.5	8" Open Left Cartridge, IV250 7.5 Undersized	\$2,637
	7.40-7.80	25CARTLH08-250-U7.5-AC	8" Open Left Cartridge, IV250 7.5 Undersized AC	\$2,637
10"	9.70+	25CARTLH10-250	10" Open Left Cartridge, IV250	\$3,033
	9.40-9.70	25CARTLH10-250-U9.5	10" Open Left Cartridge, IV250 9.5 Undersized	\$3,485
	9.40-9.70	25CARTLH10-250-U9.5-AC	10" Open Left Cartridge, IV250 9.5 Undersized AC	\$3,485
12"	11.70+	25CARTLH12-250	12" Open Left Cartridge, IV250	\$3,588
	11.00-11.40	25CARTLH12-250-U11.1	12" Open Left Cartridge, IV250 11.1 Undersized	\$4,324
	11.40-11.70	25CARTLH12-250-U11.5	12" Open Left Cartridge, IV250 11.5 Undersized	\$4,218
	11.40-11.70	25CARTLH12-250-U11.5-AC	12" Open Left Cartridge, IV250 11.5 Undersized AC	\$4,218

Note: Valve cartridges include operating nut, operating nut retention nut and friction washer
Undersized valve cartridges require the use of undersized cutters. See Hydra-Core Pipe Wall Sampling Kit operating instructions for reference.
Undersized AC valve cartridges must be used in AC applications with undersized inside diameters.

4"-12" INSTA-VALVE 250 PATRIOT **OPEN RIGHT** VALVE CARTRIDGES (**RED** Operating Nut)



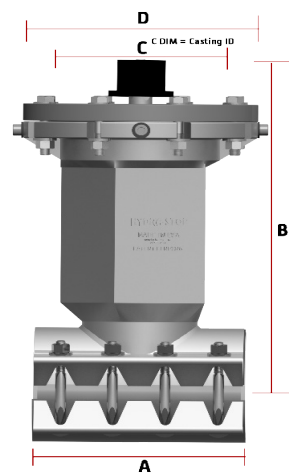
Nominal Size	Valve Body ID Range	Part Number	Description	List Price
4"	3.75+	25CARTRH04-250	4" Open Right Cartridge, IV250	\$1,675
6"	5.75+	25CARTRH06-250	6" Open Right Cartridge, IV250	\$1,831
	5.45-5.75	25CARTRH06-250-U5.5	6" Open Right Cartridge, IV250 5.5 Undersized	\$2,194
8"	7.80+	25CARTRH08-250	8" Open Right Cartridge, IV250	\$2,068
	7.40-7.80	25CARTRH08-250-U7.5	8" Open Right Cartridge, IV250 7.5 Undersized	\$2,637
	7.40-7.80	25CARTRH08-250-U7.5-AC	8" Open Right Cartridge, IV250 7.5 Undersized AC	\$2,637
10"	9.70+	25CARTRH10-250	10" Open Right Cartridge, IV250	\$3,033
	9.40-9.70	25CARTRH10-250-U9.5	10" Open Right Cartridge, IV250 9.5 Undersized	\$3,485
	9.40-9.70	25CARTRH10-250-U9.5-AC	10" Open Right Cartridge, IV250 9.5 Undersized AC	\$3,485
12"	11.70+	25CARTRH12-250	12" Open Right Cartridge, IV250	\$3,588
	11.00-11.40	25CARTRH12-250-U11.1	12" Open Right Cartridge, IV250 11.1 Undersized	\$4,324
	11.40-11.70	25CARTRH12-250-U11.5	12" Open Right Cartridge, IV250 11.5 Undersized	\$4,218
	11.40-11.70	25CARTRH12-250-U11.5-AC	12" Open Right Cartridge, IV250 11.5 Undersized AC	\$4,218

Note: Valve cartridges include operating nut, operating nut retention nut and friction washer
Undersized valve cartridges require the use of undersized cutters. See Hydra-Core Pipe Wall Sampling Kit operating instructions for reference.
Undersized AC valve cartridges must be used in AC applications with undersized inside diameters.



How to purchase the Insta-Valve 250 Patriot Insertion Valve

Step 3) Place your order.



Weights and Dims					
Size	A	B	C	D	Approx. Weight
4"	12"	18.6	8.4	13.5	138 lbs
6"	12"	21.5	8.4	13.5	173 lbs
8"	16"	24.6	8.4	13.5	229 lbs
10"	24	30	17	19	370 lbs
12"	24	33	17	19	425 lbs

Other Specifications
Valve Body Minimum Test Pressure: 1.5 times system working pressure
Valve Body Maximum Test Pressure: 375 psi, Maximum Working Pressure: 250 psi

Proprietary Information: This property of Hydra-Stop shall not be used, reproduced or distributed without written consent. All design and invention rights are reserved. covered by United States Patent No. 9,829,141,B2 and United States Patent No. 9,644,779,B2. Additional Patents Pending.



CERTIFICATE OF LIABILITY INSURANCE

DATE (MM/DD/YYYY)

11/25/2024

THIS CERTIFICATE IS ISSUED AS A MATTER OF INFORMATION ONLY AND CONFERS NO RIGHTS UPON THE CERTIFICATE HOLDER. THIS CERTIFICATE DOES NOT AFFIRMATIVELY OR NEGATIVELY AMEND, EXTEND OR ALTER THE COVERAGE AFFORDED BY THE POLICIES BELOW. THIS CERTIFICATE OF INSURANCE DOES NOT CONSTITUTE A CONTRACT BETWEEN THE ISSUING INSURER(S), AUTHORIZED REPRESENTATIVE OR PRODUCER, AND THE CERTIFICATE HOLDER.

IMPORTANT: If the certificate holder is an **ADDITIONAL INSURED**, the policy(ies) must have **ADDITIONAL INSURED** provisions or be endorsed. If **SUBROGATION IS WAIVED**, subject to the terms and conditions of the policy, certain policies may require an endorsement. A statement on this certificate does not confer rights to the certificate holder in lieu of such endorsement(s).

PRODUCER GCG Risk Management Consultants LLC Three Parkway North Suite 500 Deerfield IL 60015	CONTACT NAME: PHONE (A/C, No, Ext): (847) 457-3000 FAX (A/C, No): (847) 457-3100 E-MAIL ADDRESS: COIRequest@AleraGroup.com
INSURED Hydra-Stop LLC 144 Tower Dr, Suite A Burr Ridge IL 60527	INSURER(S) AFFORDING COVERAGE INSURER A: The Phoenix Insurance Company INSURER B: The Charter Oak Fire Ins Co INSURER C: Travelers Property Casualty Co of America INSURER D: INSURER E: INSURER F:

COVERAGES**CERTIFICATE NUMBER:** 24-25 HydraStop**REVISION NUMBER:**

THIS IS TO CERTIFY THAT THE POLICIES OF INSURANCE LISTED BELOW HAVE BEEN ISSUED TO THE INSURED NAMED ABOVE FOR THE POLICY PERIOD INDICATED. NOTWITHSTANDING ANY REQUIREMENT, TERM OR CONDITION OF ANY CONTRACT OR OTHER DOCUMENT WITH RESPECT TO WHICH THIS CERTIFICATE MAY BE ISSUED OR MAY PERTAIN, THE INSURANCE AFFORDED BY THE POLICIES DESCRIBED HEREIN IS SUBJECT TO ALL THE TERMS, EXCLUSIONS AND CONDITIONS OF SUCH POLICIES. LIMITS SHOWN MAY HAVE BEEN REDUCED BY PAID CLAIMS.

INSR LTR	TYPE OF INSURANCE	ADDL INSD	SUBR WVD	POLICY NUMBER	POLICY EFF (MM/DD/YYYY)	POLICY EXP (MM/DD/YYYY)	LIMITS
A	<input checked="" type="checkbox"/> COMMERCIAL GENERAL LIABILITY <input type="checkbox"/> CLAIMS-MADE <input checked="" type="checkbox"/> OCCUR GEN'L AGGREGATE LIMIT APPLIES PER: <input checked="" type="checkbox"/> POLICY <input type="checkbox"/> PRO-JECT <input type="checkbox"/> LOC OTHER:	Y		Y-630-1W273053-PHX-24	11/30/2024	11/30/2025	EACH OCCURRENCE \$ 1,000,000 DAMAGE TO RENTED PREMISES (Ea occurrence) \$ 300,000 MED EXP (Any one person) \$ 50,000 PERSONAL & ADV INJURY \$ 1,000,000 GENERAL AGGREGATE \$ 2,000,000 PRODUCTS - COMP/OP AGG \$ 2,000,000
B	<input checked="" type="checkbox"/> AUTOMOBILE LIABILITY <input checked="" type="checkbox"/> ANY AUTO OWNED AUTOS ONLY <input type="checkbox"/> SCHEDULED AUTOS <input checked="" type="checkbox"/> HIRED AUTOS ONLY <input checked="" type="checkbox"/> NON-OWNED AUTOS ONLY			BA-3X595672-24-14-G	11/30/2024	11/30/2025	COMBINED SINGLE LIMIT (Ea accident) \$ 1,000,000 BODILY INJURY (Per person) \$ BODILY INJURY (Per accident) \$ PROPERTY DAMAGE (Per accident) \$
C	<input checked="" type="checkbox"/> UMBRELLA LIAB <input checked="" type="checkbox"/> OCCUR <input type="checkbox"/> EXCESS LIAB <input type="checkbox"/> CLAIMS-MADE DED <input checked="" type="checkbox"/> RETENTION \$ 10,000			CUP-4X244347-24-14	11/30/2024	11/30/2025	EACH OCCURRENCE \$ 10,000,000 AGGREGATE \$ 10,000,000
C	<input checked="" type="checkbox"/> WORKERS COMPENSATION AND EMPLOYERS' LIABILITY ANY PROPRIETOR/PARTNER/EXECUTIVE OFFICER/MEMBER EXCLUDED? (Mandatory in NH) <input type="checkbox"/> If yes, describe under DESCRIPTION OF OPERATIONS below	Y/N	N/A	UB-3X986911-24-14-G	11/30/2024	11/30/2025	<input checked="" type="checkbox"/> PER STATUTE <input type="checkbox"/> OTH-ER E.L. EACH ACCIDENT \$ 1,000,000 E.L. DISEASE - EA EMPLOYEE \$ 1,000,000 E.L. DISEASE - POLICY LIMIT \$ 1,000,000

DESCRIPTION OF OPERATIONS / LOCATIONS / VEHICLES (ACORD 101, Additional Remarks Schedule, may be attached if more space is required)

City of Oklahoma City and the Oklahoma Water Utilities Trust are included as Additional Insured with respect to General Liability as required by written contract and policy forms.

CERTIFICATE HOLDER**CANCELLATION**

City of Oklahoma City and the Oklahoma Water Utilities Trust
420 West Main, Suite 500

Oklahoma City

OK 73102

SHOULD ANY OF THE ABOVE DESCRIBED POLICIES BE CANCELLED BEFORE THE EXPIRATION DATE THEREOF, NOTICE WILL BE DELIVERED IN ACCORDANCE WITH THE POLICY PROVISIONS.

AUTHORIZED REPRESENTATIVE

© 1988-2015 ACORD CORPORATION. All rights reserved.