


NewTechWood

1. Product Name

- NewTechWood Ultrashield Naturale Composite Decking

2. Manufacturer

NewTechWood America, Inc.
 19111 Walden Forest Drive
 Suite B
 Houston Texas 77346

Phone: 281-570-6450

Fax: 281-661-1167

Email: richard@newtechwood.com

Web: www.newtechwood.com

3. Product Description

Basic Use

Used for primarily exterior applications, the Ultrashield Naturale Composite Decking UltraShield's exclusive colors and patterns give you endless possibilities. The latest Naturale line features a unique treatment on the shield to make it a natural-feeling capped wood-plastic composite.

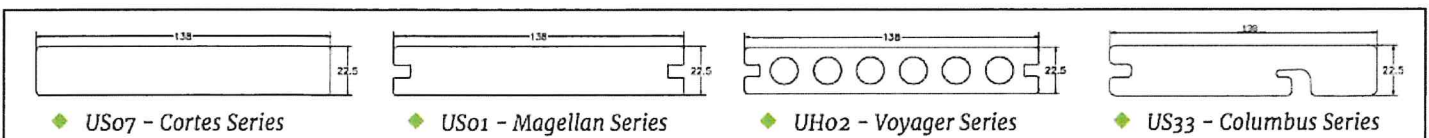
UltraShield composite decking comes in solid and hollow profiles for both commercial and residential applications, with the flexibility to choose between common screws and hidden fasteners. All of them are wrapped 360 degrees, including the grooves. The shield provides protection against moisture, mold, fade and mildew.

Four profiles are available to create any decking design, see illustration 1.

- **US07 Cortes Series:** solid board
- **US01 Magellan Series:** solid board with grooves
- **UH02 Voyager Series:** circle hollow board with grooves
- **US33 Columbus Series:** solid board with groove on one side and underneath side

See Accessories/Options for fasteners.

illustration 1



Composition and Materials

The composite material is comprised of HDPE plastic and hardwood chips. The composite material is encased in a 0.5-0.7 mm plastic shell with UV and stain inhibitors additives to ASTM G154, called Ultrashield, which is a proprietary blend of plastics.

Features and Benefits

- Easier to cut than comparably-sized all-wood planks
- Maintains color/does not need to be stained or maintained
- Ultrashield technology protection

Dimensions

US097, US01, UH02 and US33 board:

W × D × L: 5½ × 9/10 inches × 16 feet (138 × 22.5 mm × 4.87 m)

Colors

- Brazilian Ipe
- Spanish Walnut
- Westminster Gray
- Peruvian Teak
- Roman Antique
- Hawaiian Charcoal

Safety Data Sheets

SDS information is available [here](#).

Accessories/Options

- **MGS-50:** Mini Gap System: 75 clips that allow movement and 15 locking clips
- **PCHFS50:** Plastic Clip Hidden Fastener System: 75 clips that allow movement and 15 locking clips
- **SC-25:** Starter System: 25 clips for use on first and last boards and for stairs.

4. Technical Data

Applicable Standards

ASTM International (ASTM)

- **ASTM D7032** Standard Specification for Establishing Performance Ratings for Wood-Plastic Composite and Plastic Lumber Deck Boards, Stair Treads, Guards, and Handrails
- **ASTM G154** Standard Practice for Operating Fluorescent Ultraviolet (UV) Lamp Apparatus for Exposure of Nonmetallic Materials

International Code Council (ICC)

- **ICC-ES AC 174** Acceptance Criteria for Deck Board Span Ratings and Guardrail Systems (Guards and Handrails), approved January 2012, section 3.4, 3.7, 3.9, 3.11 and 4.1

5. Installation

Manufacturer installation instructions are available [here](#).

Installation videos available [here](#).

6. Availability and Cost

Contact manufacturer for availability and pricing.

7. Warranty

A 25-year limited warranty is offered.

8. Maintenance

Clean with soap and water. Can be pressure washed on a low setting.

9. Technical Services

NewTechWood America, Inc. offers telephone support.

10. Filing Systems

- ConstructConnect
- Additional product information is available from the manufacturer upon request ↩



RECEIVED
NOV - 7 2024
PLANNING DEPARTMENT



SHERWIN-WILLIAMS.

What can we help you find?

0 - \$0.00

Paints & Supplies

Find Color

Project Center

For Pros

Special Offers

N 6991 Black Magic

SW 6258

SW 6990

SW 6991

SW 6992

SW 6993

SW 6994

SW 6991

Black Magic

FULL DETAILS

For those who don't shy away from bold palettes, this black makes a bewitching statement in any space. It has a slight warmth that feels deliciously enticing.

Get this color in a:



Color Sample



Paint Sample



Interior Paint



Exterior Paint



↑ UPLOAD A PHOTO



SHERWIN-WILLIAMS.

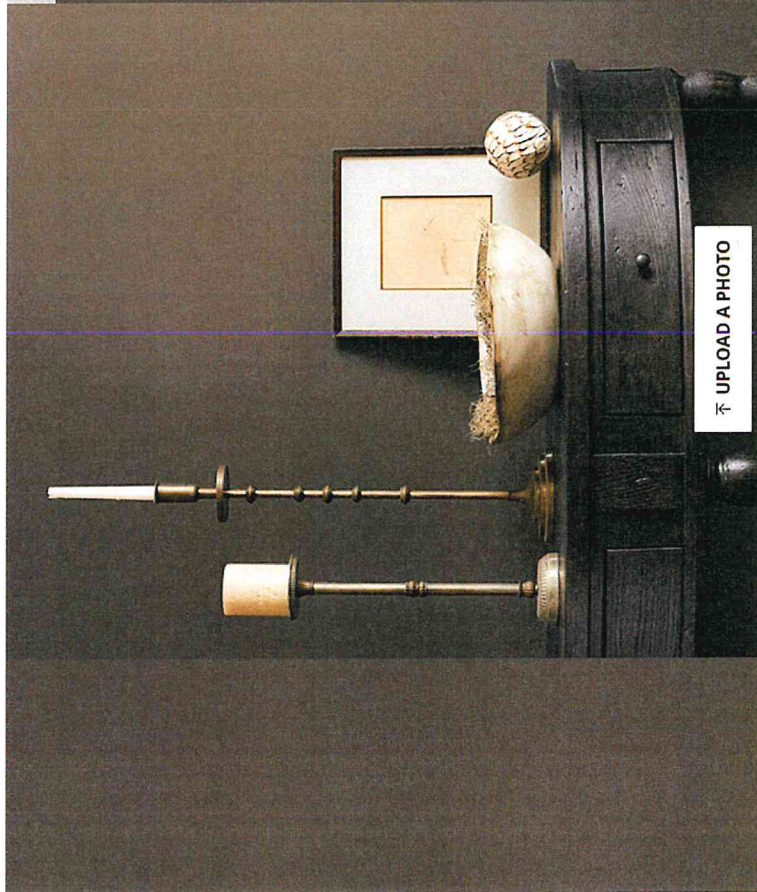
What can we help you find?



0 - \$0.00

Paints & Supplies Find Color Project Center For Pros Special Offers

Color > Neutral Paint Colors > SW 7020 Black Fox



↑ UPLOAD A PHOTO

SW 7015 SW 7016 SW 7017 SW 7018 SW 7019 SW 7020

SW 7020

Black Fox

FULL DETAILS

This beguiling black neutral lends a nuance of sophistication with its warm greige undertone. Make a statement with an accent wall or a well-lit office.

Get this color in at:



Color Sample



Paint Sample



Interior Paint



Exterior Paint

Ask SHERWIN-WILLIAMS

RECEIVED
NOV - 7 2024
PLANNING DEPARTMENT



COATINGS

CHEMISTRIES

MARKETS

Resources Colors Where to Buy About Us (360) 546-2286

Order Samples



OVERVIEW DOCUMENTS **COLORS** CASE STUDIES FAQ

OPACI-COAT-300® Colors

ICD High Performance Coatings + Chemistries offers OPACI-COAT-300® in virtually unlimited colors. We use inorganic automotive-grade pigments to give your project the color pop and lasting performance it deserves.

spandrel glass

Standard Color Set

#0-0020 Snow White	#0-0186 Light White	#0-1060 Primary White on Clear Glass	#1-0016 Charcoal	#1-818 Black	#2-0225 Evergreen	#2-743 Harmony Solex	#3-0586 Medium Gray
-----------------------	------------------------	--	---------------------	-----------------	----------------------	-------------------------	------------------------

RECEIVED
NOV - 7 2024
PLANNING DEPARTMENT



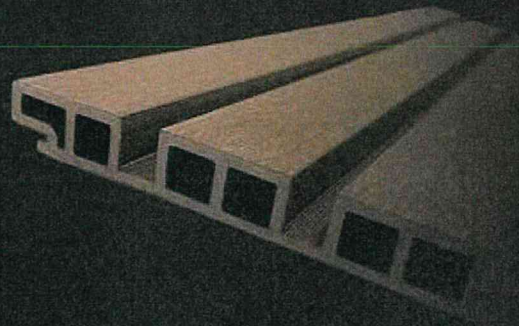
2024 Collection

EDITION 2

Q2
NOV 7 2024

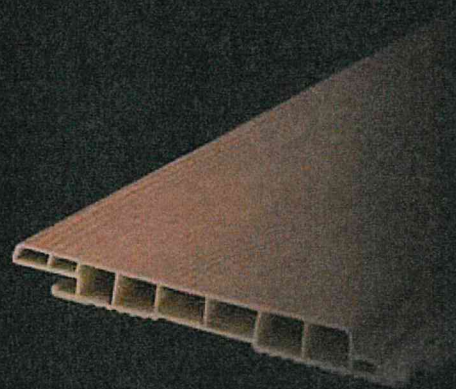
NORTwood

Page 3-18



nortWALL

Page 20-24



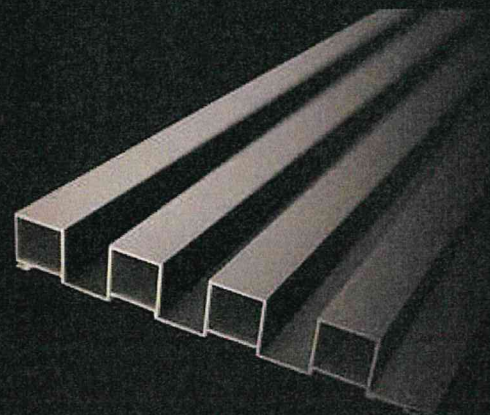
Louver 100

Page 25-28

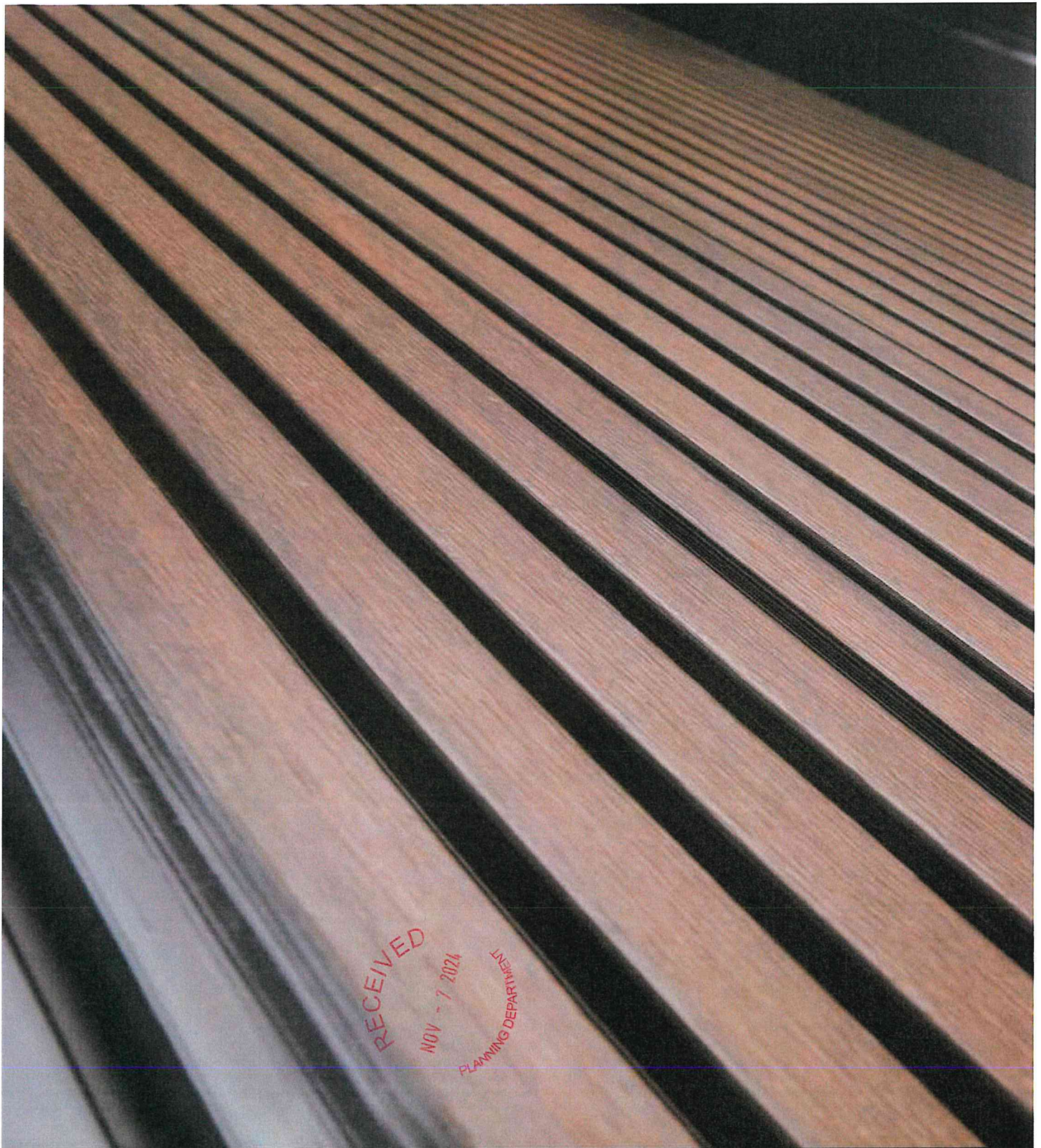


DSOAL

Page 30-34



NON - 1 100 - 100



NORTwood

WPC Fluted Panel

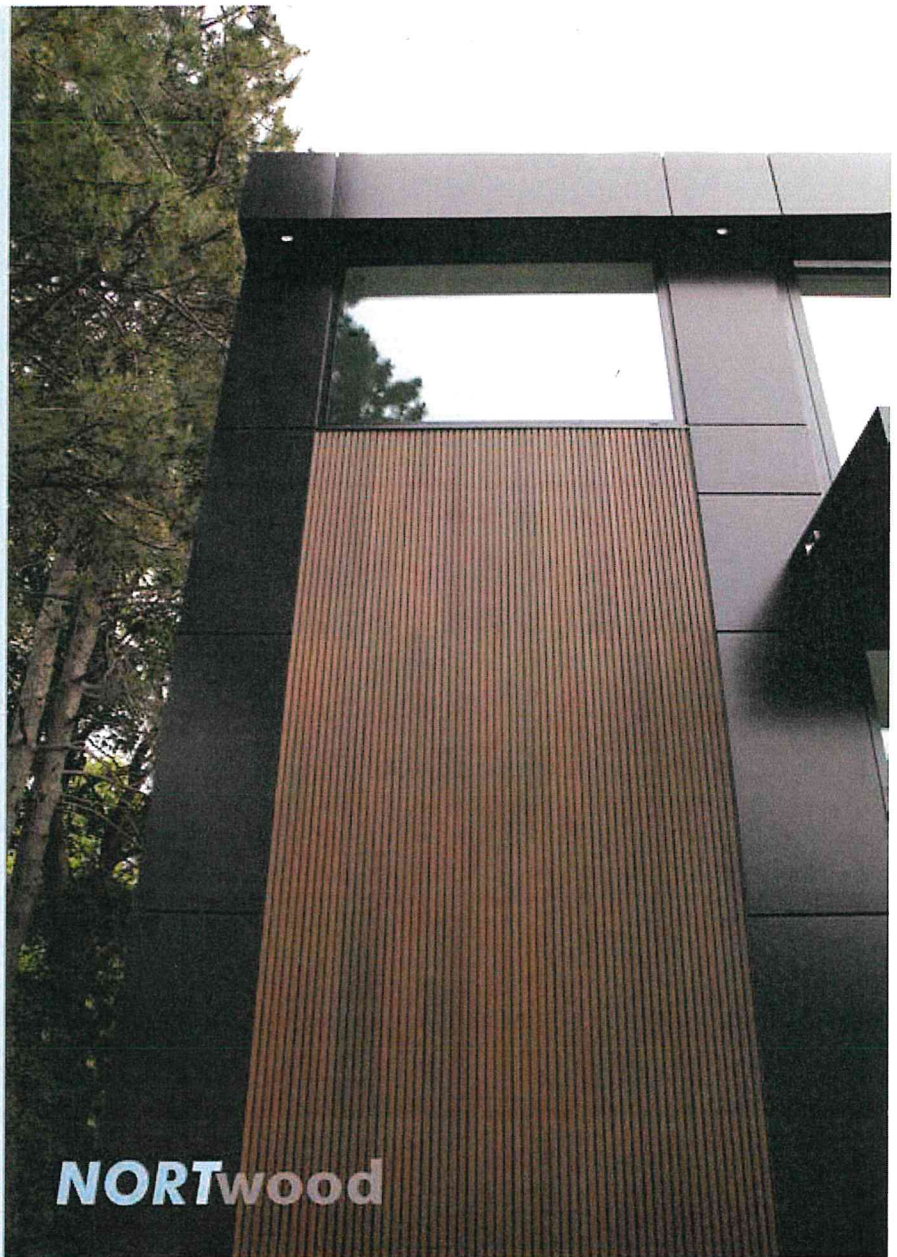
Product Description

NORTwood clip-system siding is an extruded WPC closed joint rainscreen siding product, designed to be installed horizontally or vertically.

Panels are available in standard lengths of 142" as well as trim components, used for covering imperfection such as along the 12' bottom and top of walls, around windows and doors, corners, end terminations and expansion.

Before installing NORTwood Cladding products, it is recommended that you check with local building codes for any special requirements or restrictions. All pictures shown are for illustration purposes only and are not intended to provide a specific work order for installation.

Any construction or use of NORTwood panels must be in accordance with all local zoning and/or building codes. The consumer assumes all risks and liability associated with the construction and use of this product.



General Questions:

What are Fluted Panels?

Fluted siding is a type of moulding finish in which squared moulding is repeated in a pattern. These are more refined versions of slat walls.

What Are **NORT**wood Fluted Panels Made Of?

NORTwood Fluted panels are engineered from wood fibres with a polyethylene density. NORTwood plastic composite looks like natural wood with linear or vertical designs. The material is moisture, pest, and mould-resistant.

What Are Fluted Panels Used For?

Fluted panels are great as extra decor features on modern homes, hotels lobbies, conference rooms, reception areas, and any space that requires luxurious touch.



Charcoal Black



Deep Gray



Norway Teak



Brazil Ipe



Golden Maple



Canada Oak



Antique Gray



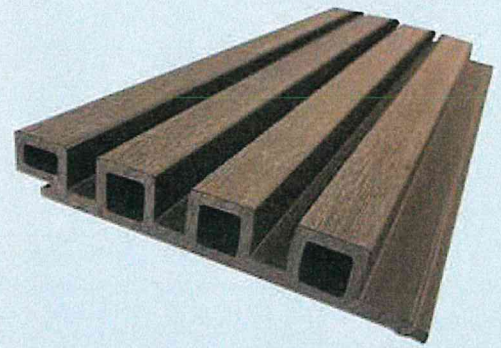
English Walnut

RECEIVED
NOV - 1 2024
PLANNING DEPARTMENT

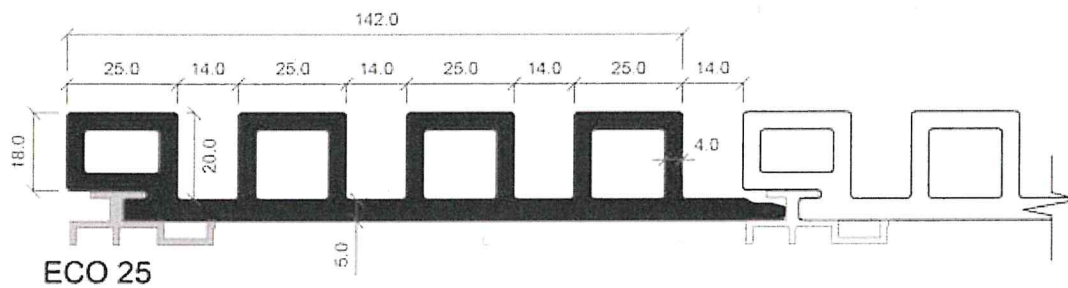
Color Collection

ECO 25

NORTwood Fluted Panel

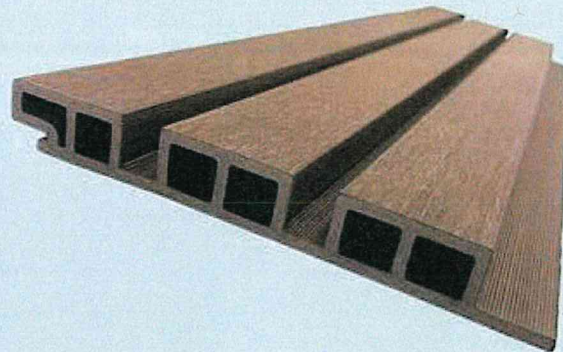


25mmx163mm x3600mm | 2.5 Kg/m
(1"x 6 1/2" x 142")

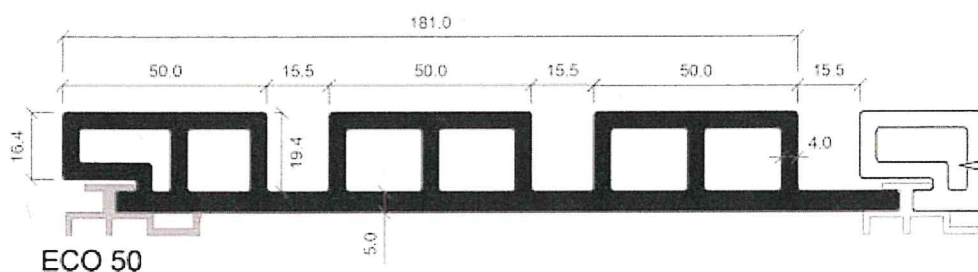


ECO 50







NORTwood Fluted Panel



26x208mm x3600mm | 2.2 Kg/m
(1"x 8 1/2" x 142")

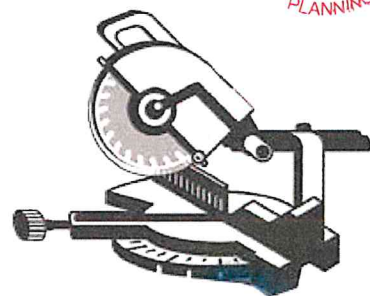


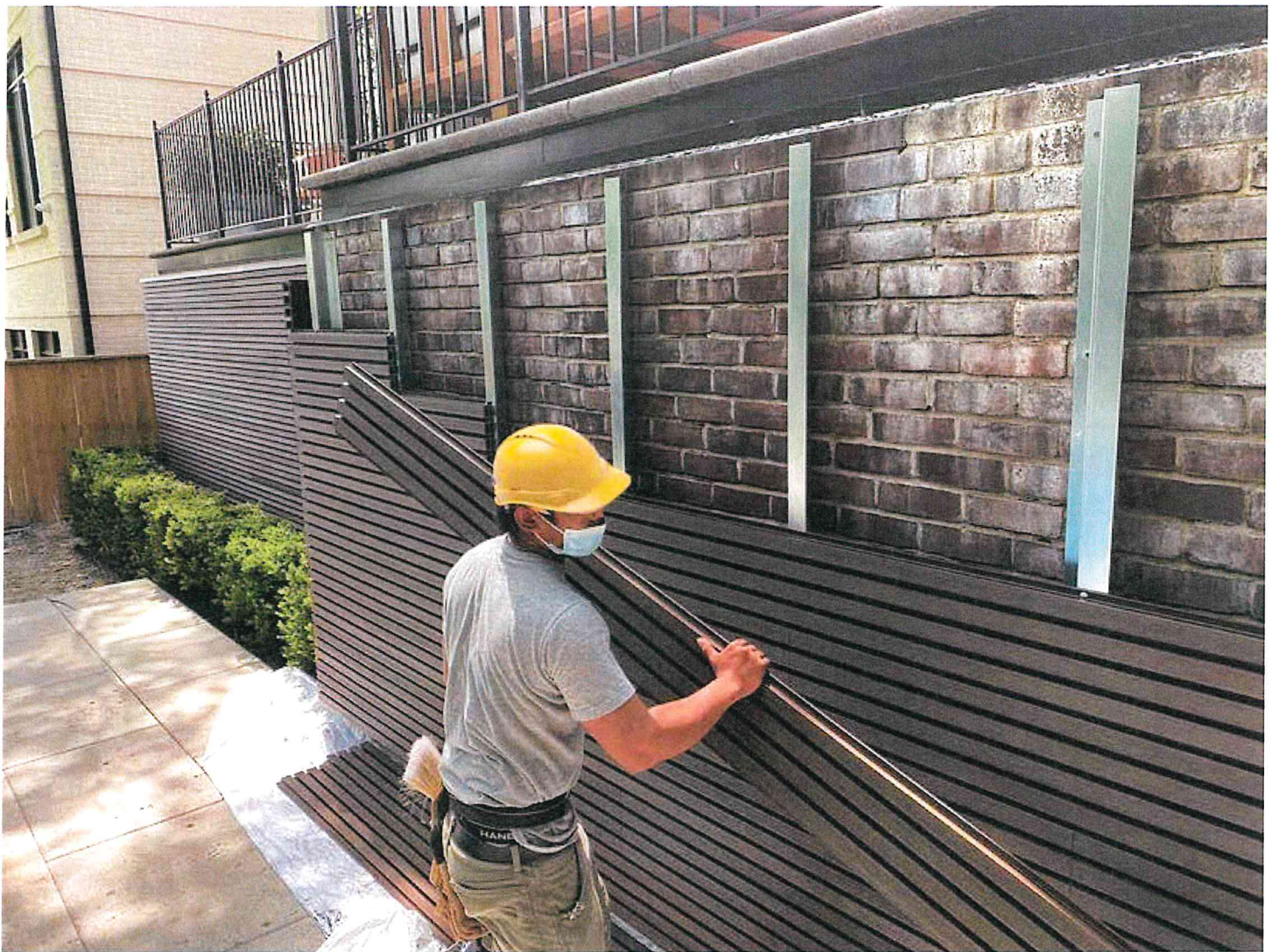
RECEIVED
NOV - 7 2024
PLANNING DEPARTMENT

Product	Material		Part
Panel Clip	Aluminum		
Corner S-Clip (Optional)	Stainless Steel		
Aluminum Starter	Aluminum Profile		
F -Trim	WPC		
Corner Trim	WPC		
L -Trim	WPC		

RECEIVED
NOV - 7 2024
PLANNING DEPARTMENT

Please be aware that in order to achieve an architectural exposed appearance and eliminate the necessity for extra trims, NORTwood panels can be readily cut and mitered for corner installations.





Tools & Safety

Always remember to wear appropriate personal protective equipment (PPE), including eye and hearing protection.

Utilize standard wood-cutting tools such as a table saw and miter saw equipped with a carbide blade (60-80 tooth), a jig saw, a hole saw, and a drill for attachments.

Note: Recommend Construction Adhesive is : LPG PL Premium Fast Grab 8x

RECEIVED
NOV - 7 2024
PLANNING DEPARTMENT

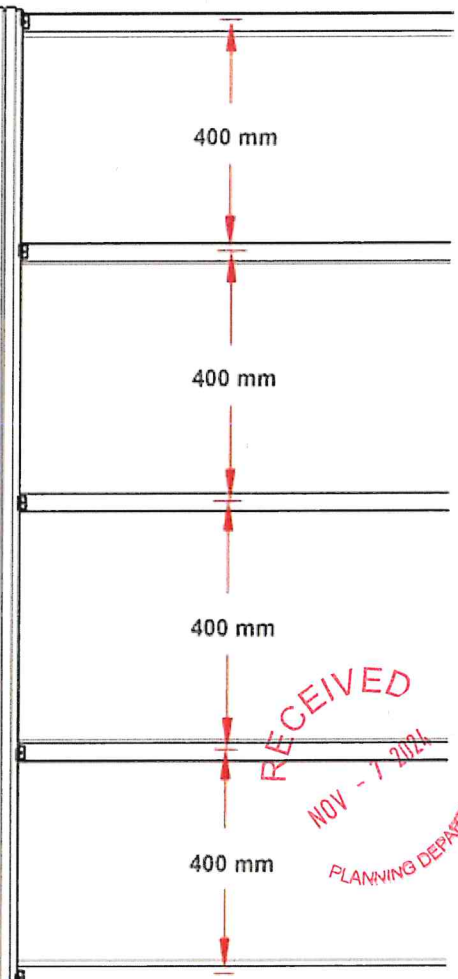
Subframe Requirements

Wood or Steel Strapping

The studs need to have a minimum thickness of 1 inch (25 mm). Straps should be fixed into position at a maximum of 16 inches (400 mm) center to center, using a suitable Stainless Steel Countersunk Wood/Masonry screw. All studs need to be flat and leveled against the wall surface use shims if necessary. Architects should be consulted regarding weather barriers and insulation for your project. Where a weather barrier is to be used, it should be a breathable type and must be positioned behind the studs.



(Up to 500mm in indoor area)



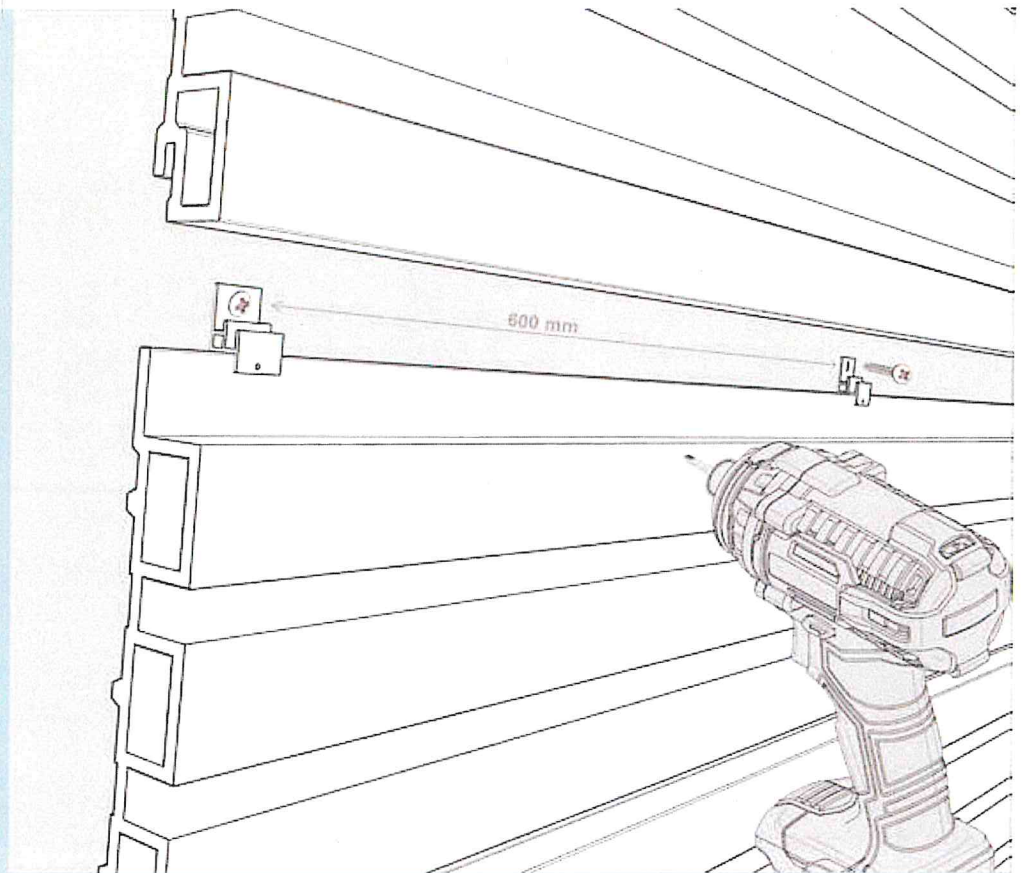
Horizontal Paneling

Aluminum Clips should be hard fastened every 600mm directly through the clips on the substrates.

Note:

Substrates must be able to carry the load of the panels. Please consult with your engineer or architect.

#8 pan-head screws are recommended.

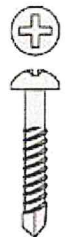


All fasteners should be suitable for exterior use and be compatible with the substrate type.

Used when locking the panels and installing into wood straps

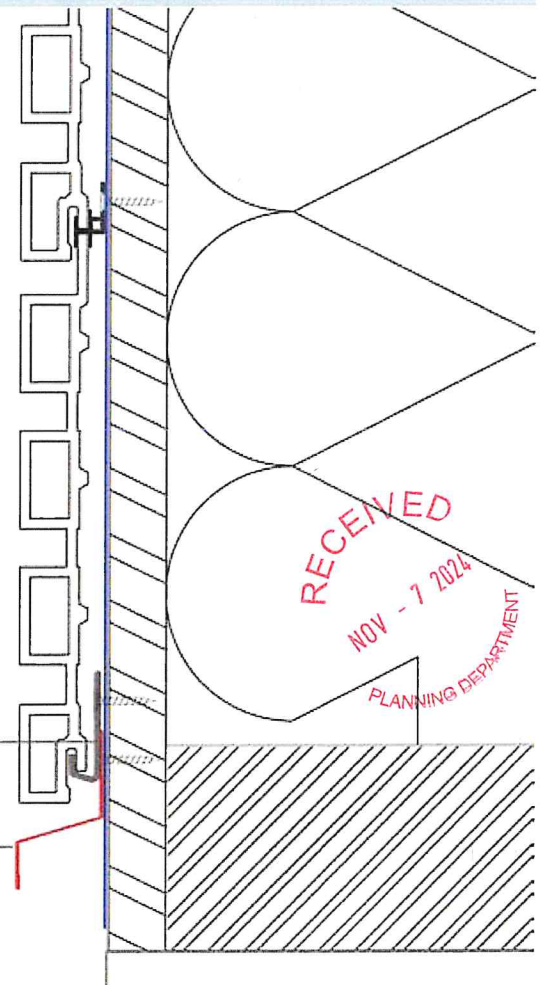


Used when locking the panels and installing into metal studs



Starter

Bottom Flashing

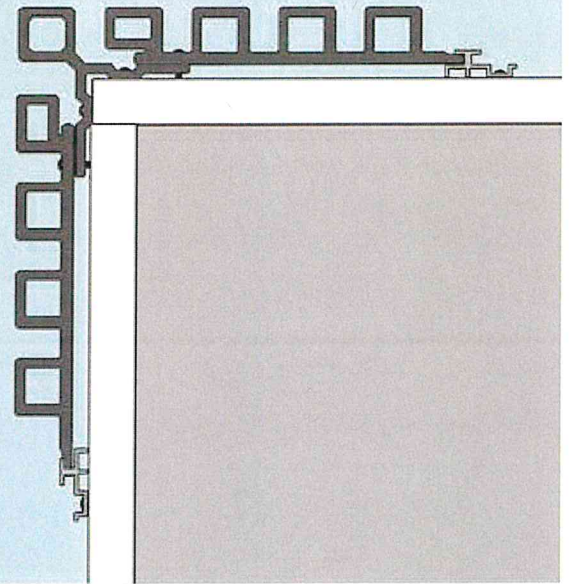
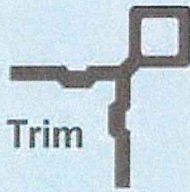


Panels & Starter components are secured using NORTwood Clips

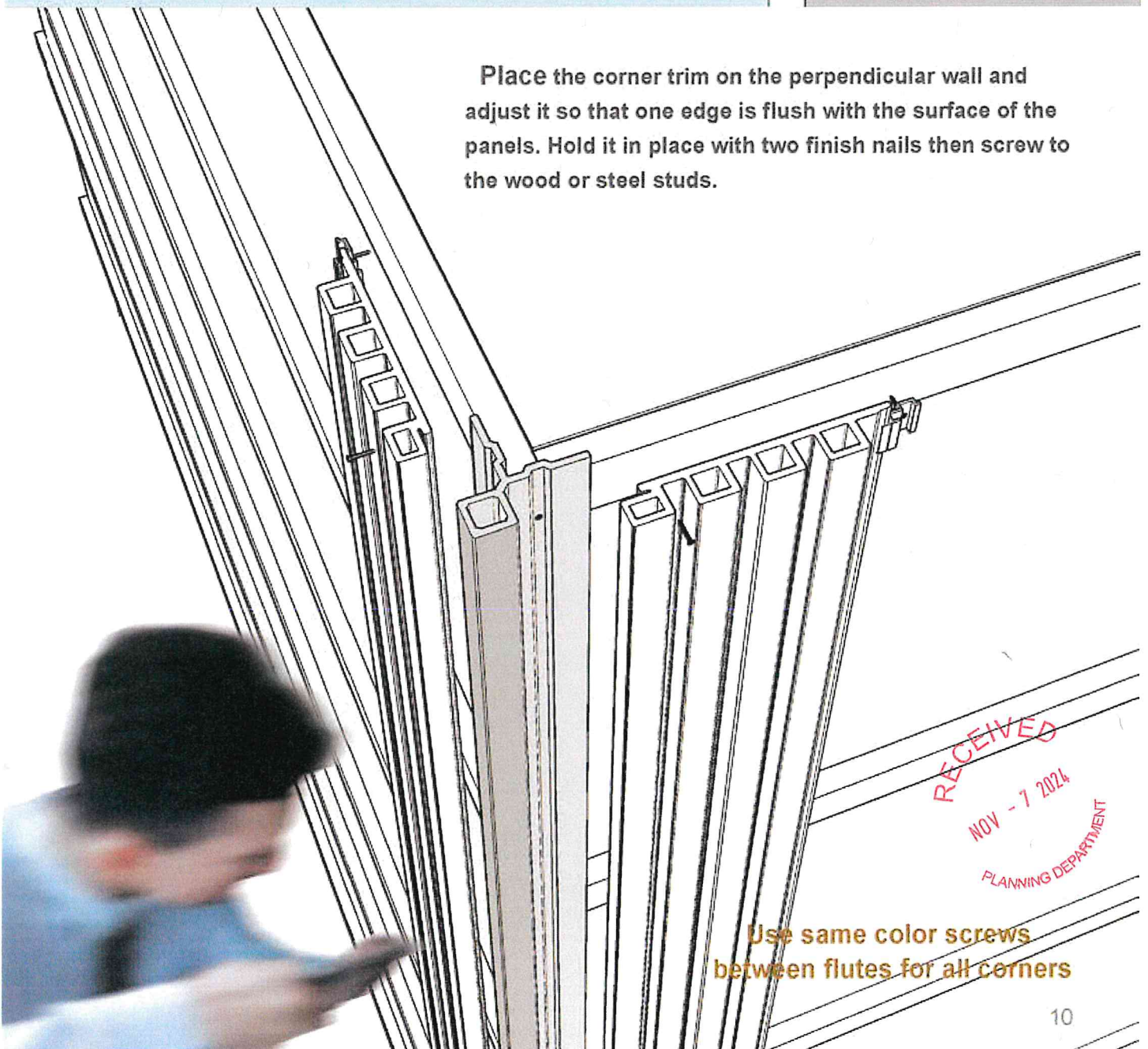
(Fastened every 400mm (16") to the substrate.

Vertical Paneling

Outside Corner Trim



Place the corner trim on the perpendicular wall and adjust it so that one edge is flush with the surface of the panels. Hold it in place with two finish nails then screw to the wood or steel studs.



RECEIVED
NOV - 7 2024
PLANNING DEPARTMENT

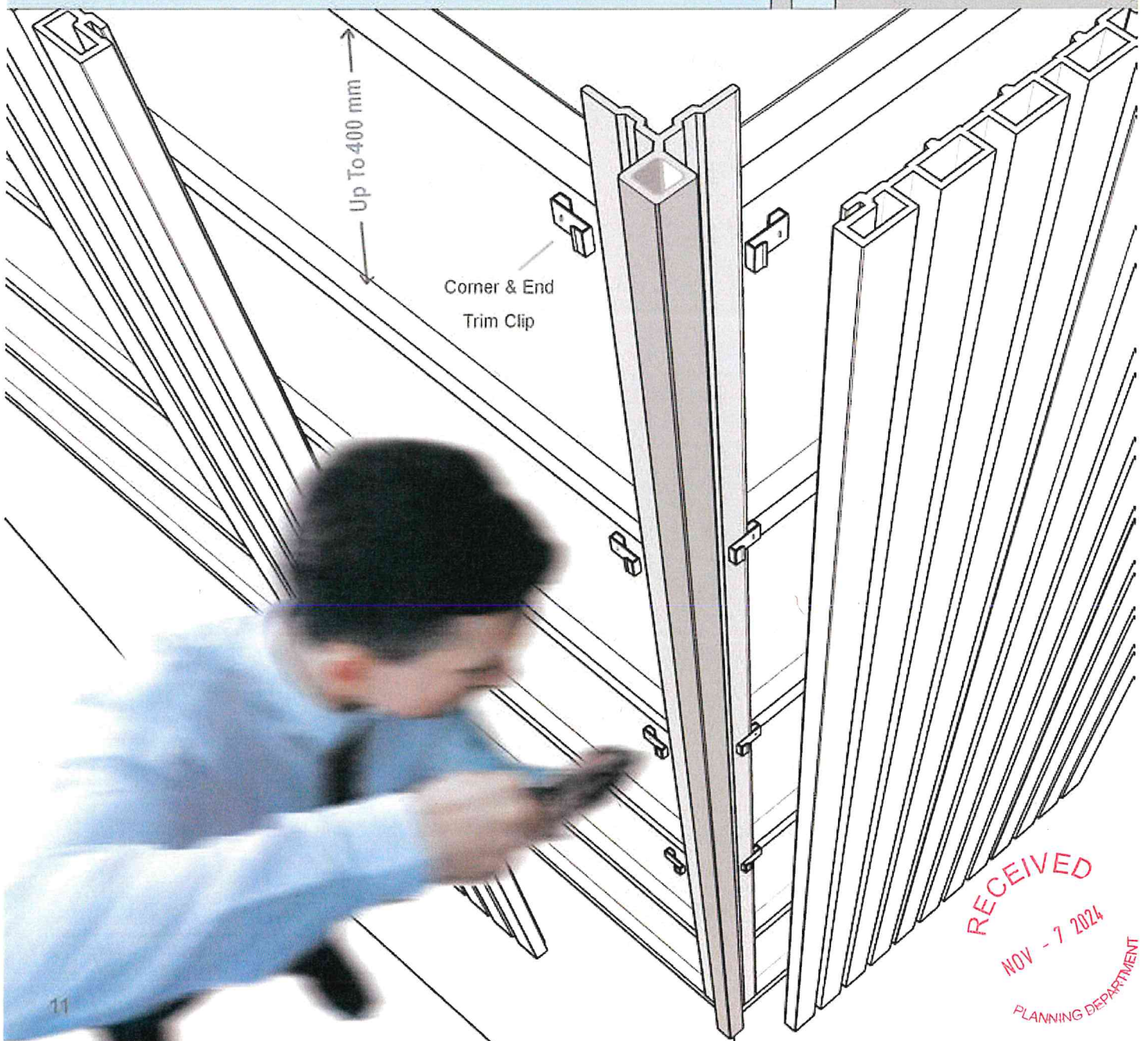
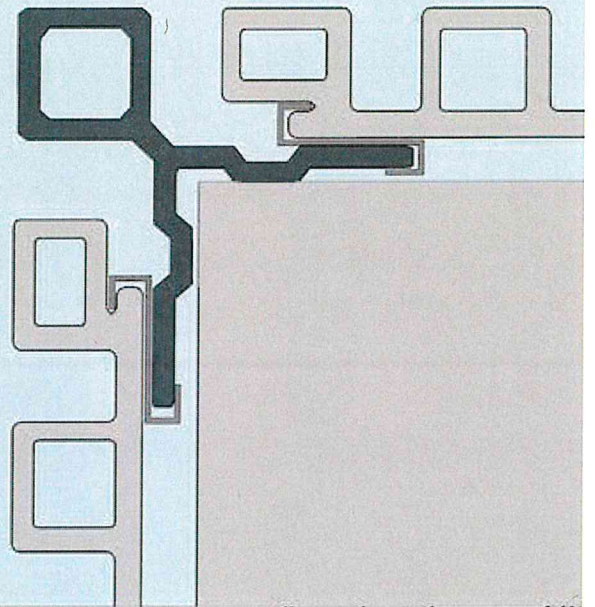
Use same color screws
between flutes for all corners

Option 2:

Use of S-Clips for Starting Corner

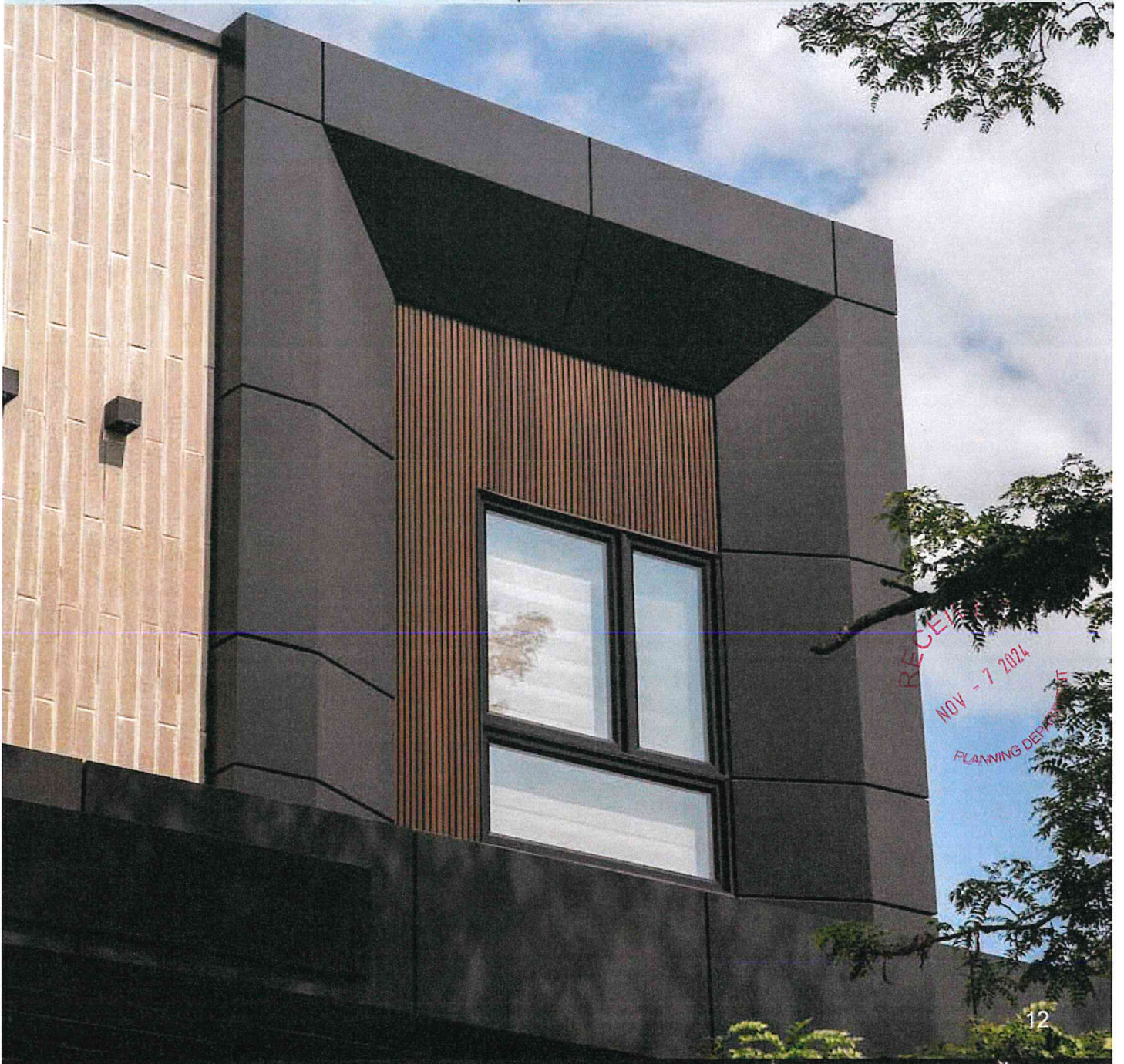
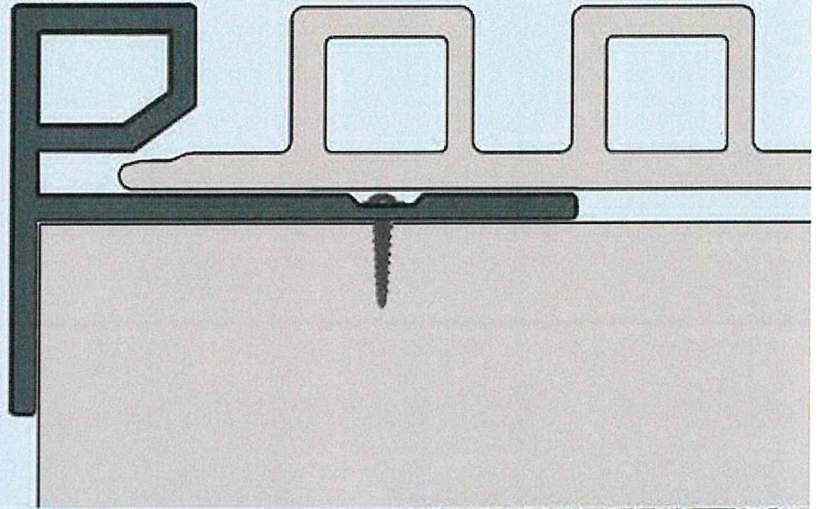
Note:

In case of using S-clips, all panels should be resting on solid surface or L-trim to avoid sliding down. This method helps to avoid use of visible screws.



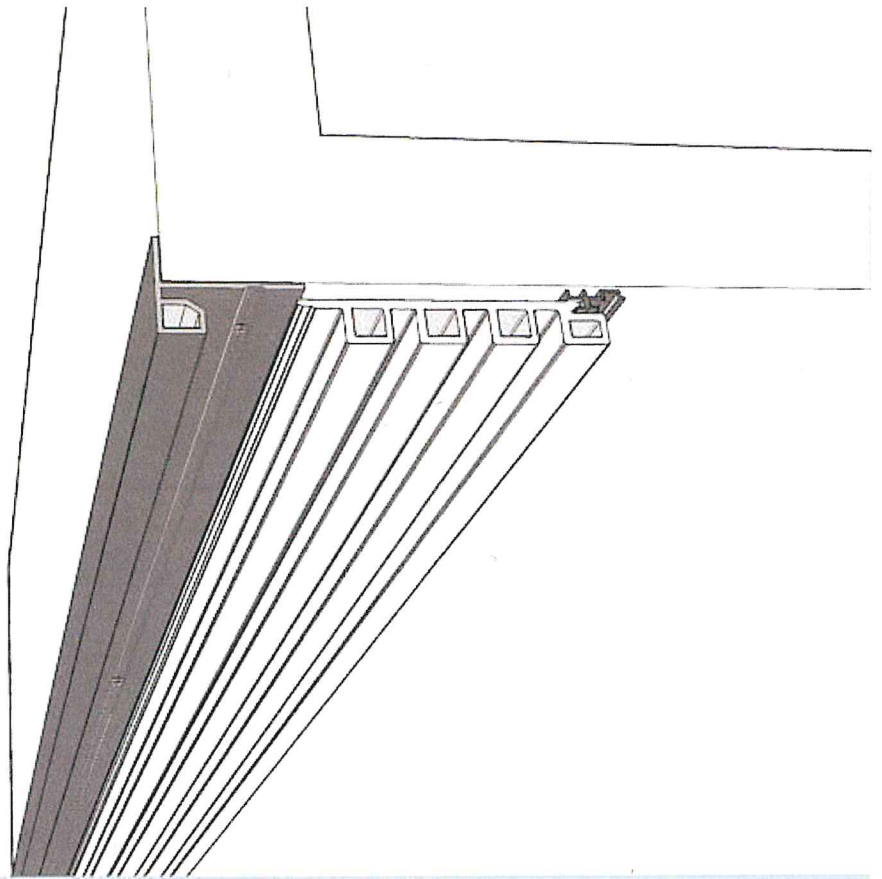
RECEIVED
NOV - 7 2024
PLANNING DEPARTMENT

F-Trim

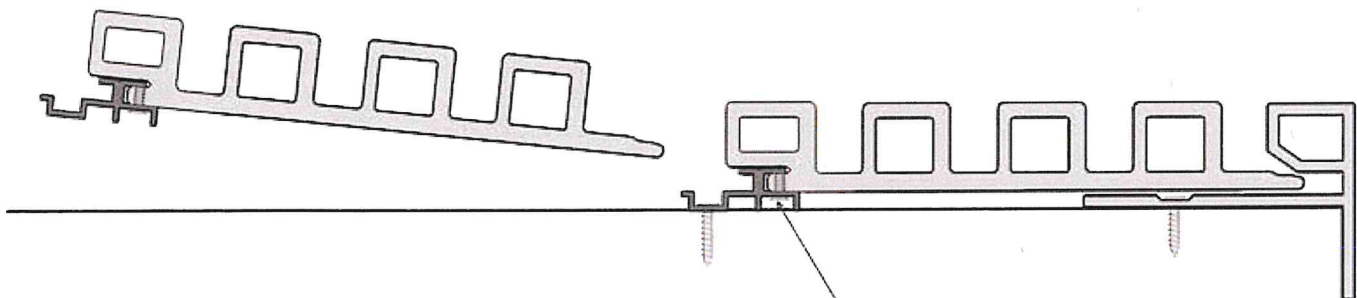


In vertical paneling, there is a high chance of panels sliding down, especially during the winter when the panels begin to shrink.

To prevent this issue, the clips must be fastened to the back side of the panels.



All fasteners should be suitable for exterior use and be compatible with the substrate type.



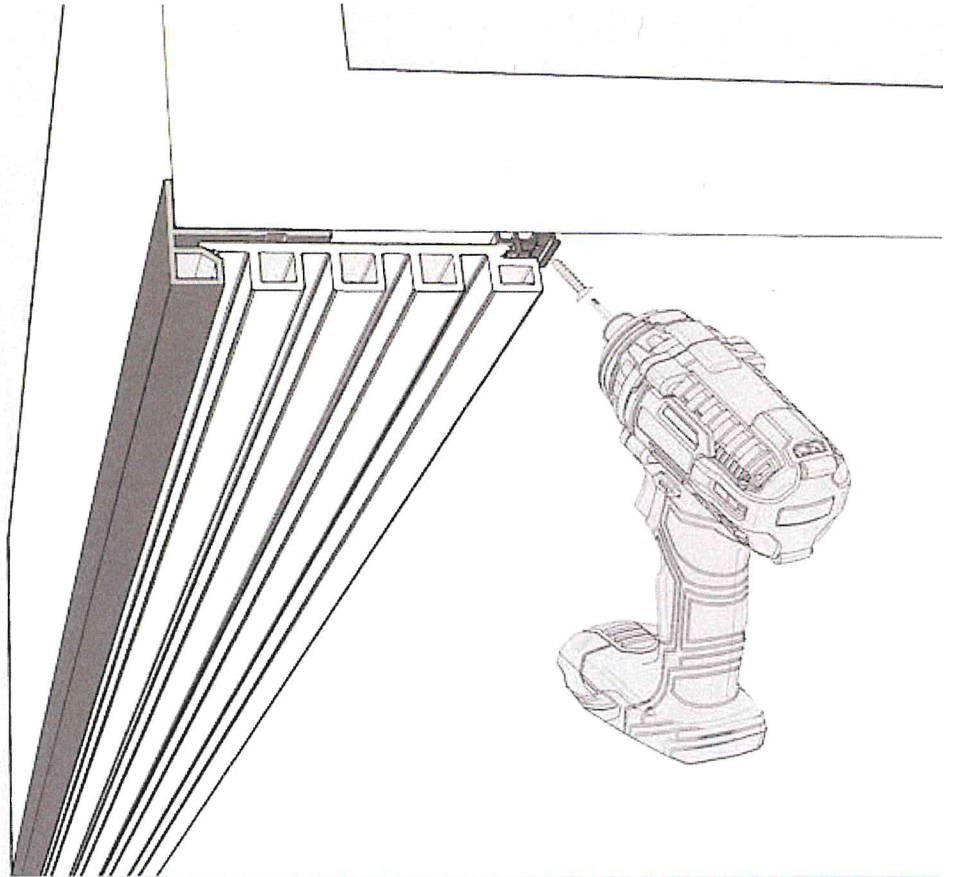
Screw the clip to the panel from the back.

RECEIVED
NOV - 7 2024
PLANNING DEPARTMENT

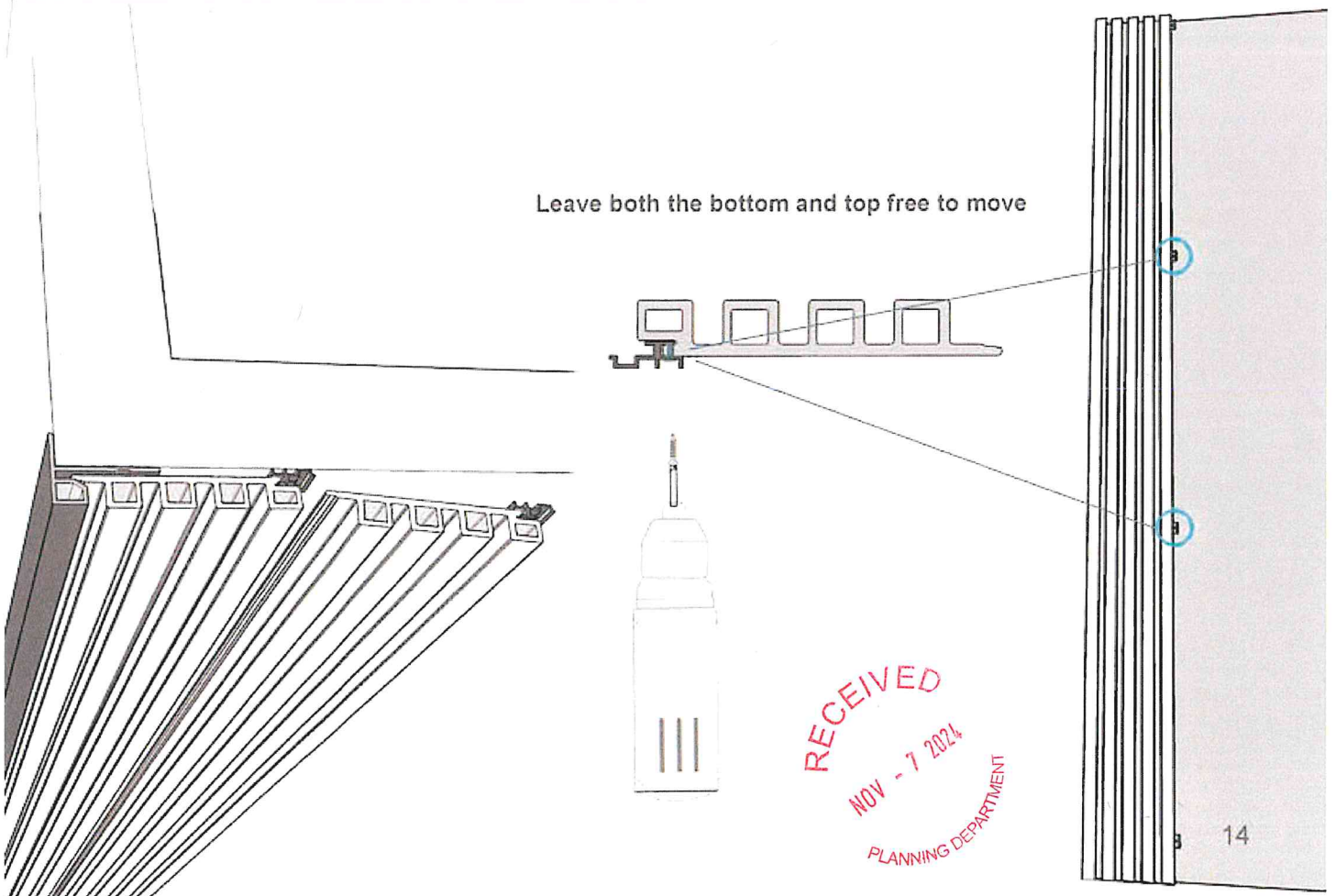
Clips fastened to the back side of the panels.

First Install the F-Trim
then slide the first fluted
panel and fasten to the
wall using clips.

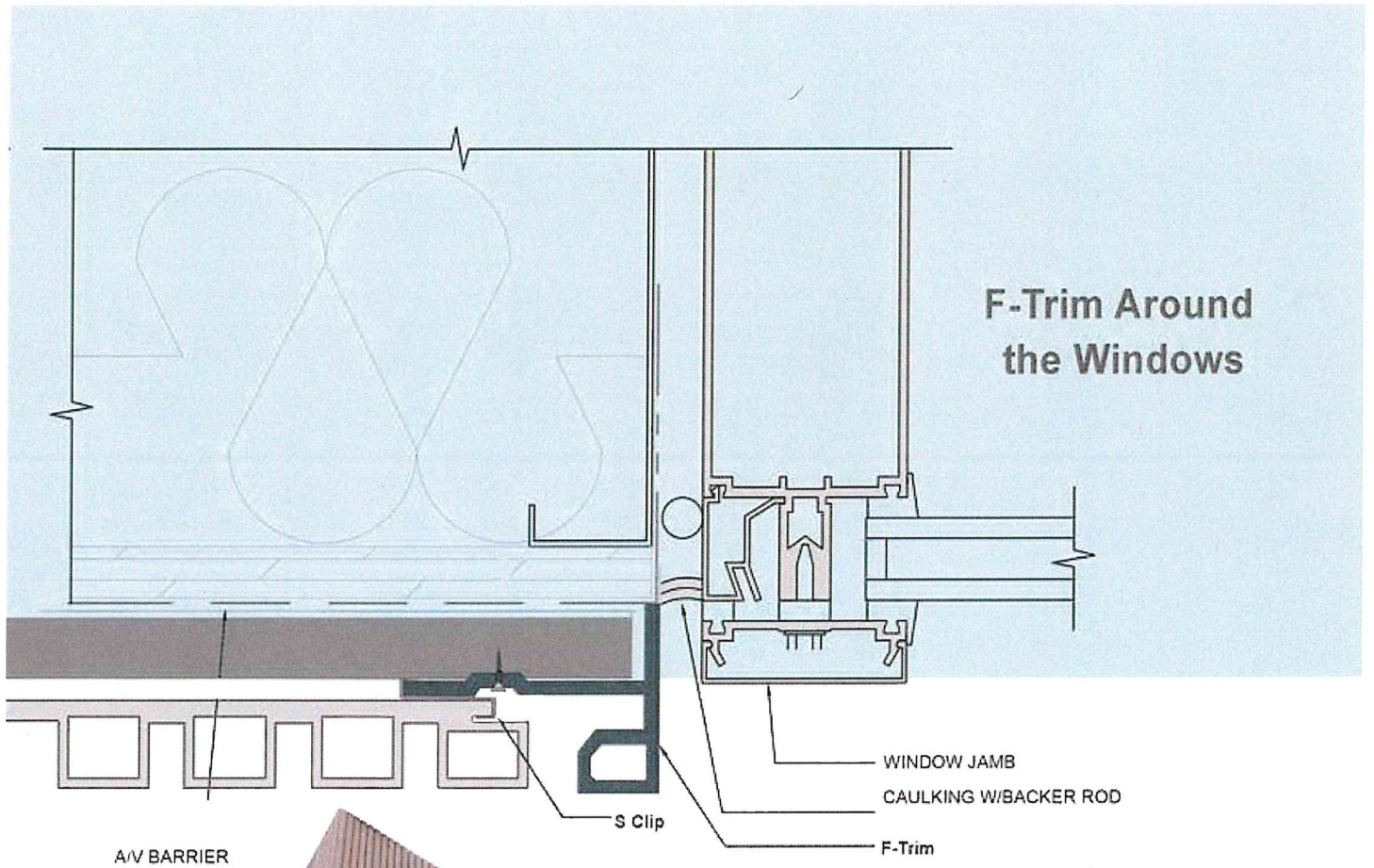
To allow for panel expansion,
attach only the middle clips
to the panels from the back
side. See below figure.



Leave both the bottom and top free to move

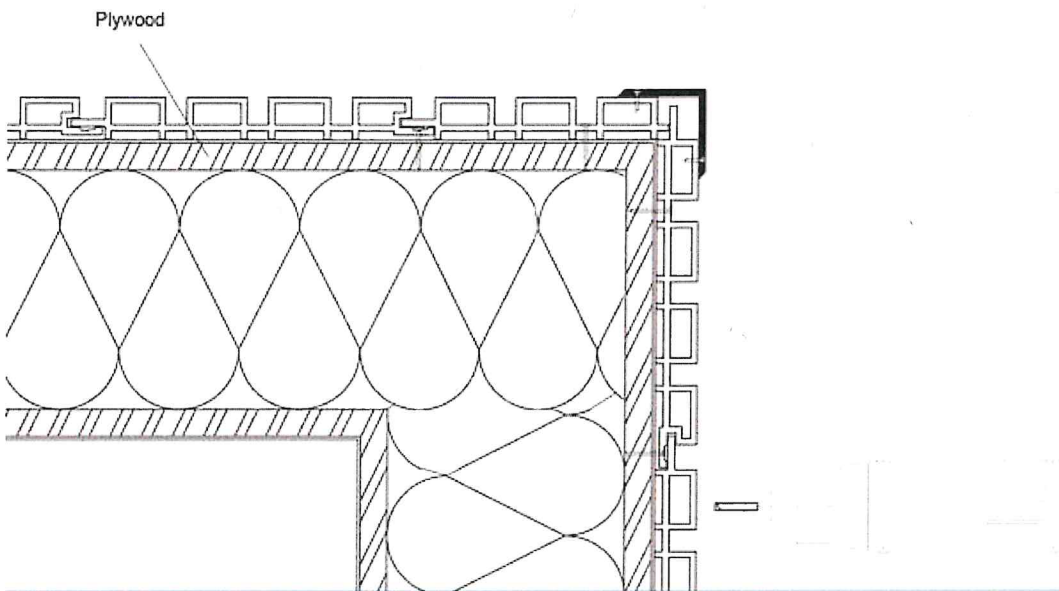


RECEIVED
NOV - 7 2024
PLANNING DEPARTMENT



RECEIVED
NOV - 7 2024
PLANNING DEPARTMENT

Architectural Corner Ideas

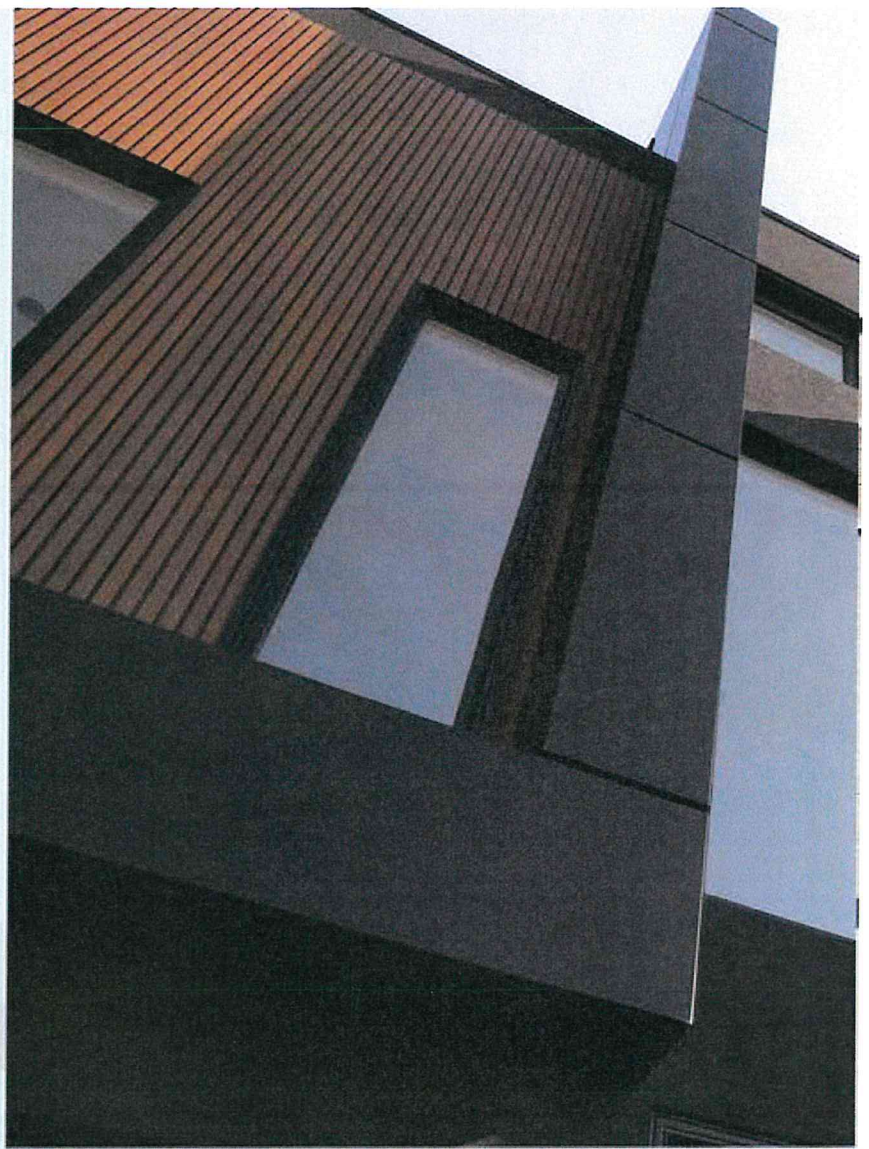
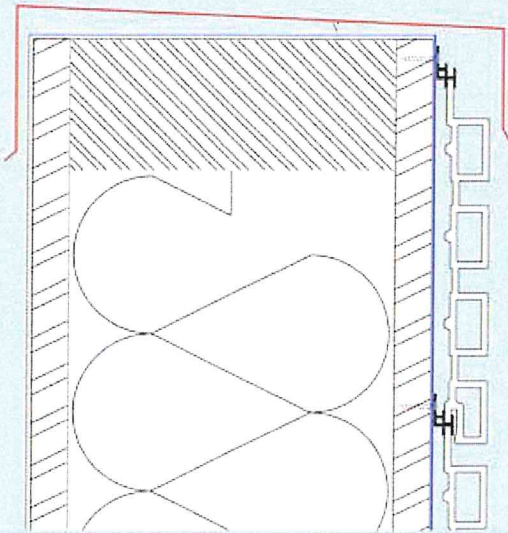


L Trim Corner

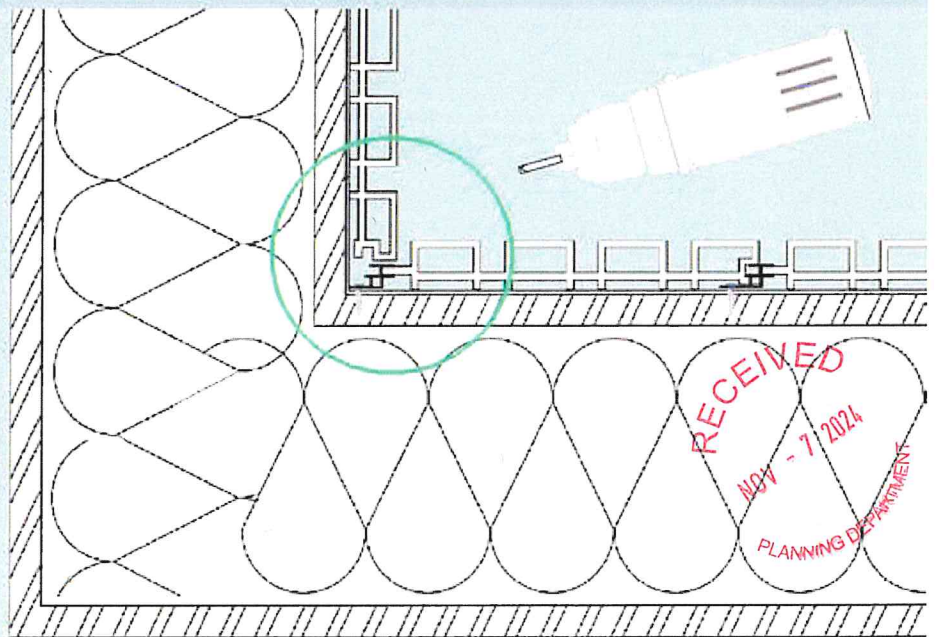
RECEIVED
NOV - 7 2024
PLANNING DEPARTMENT



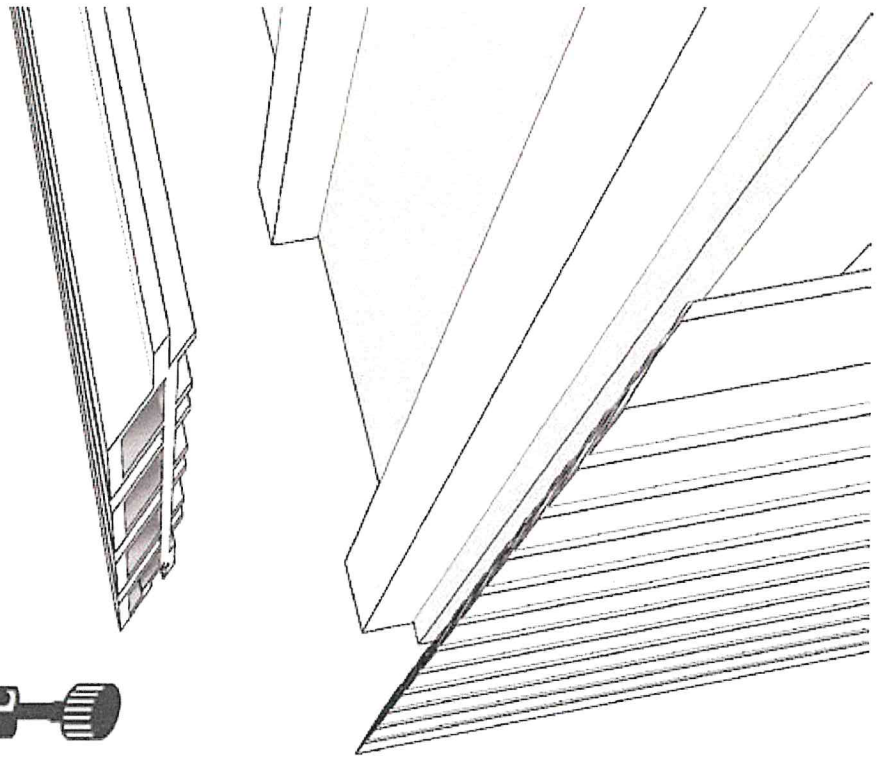
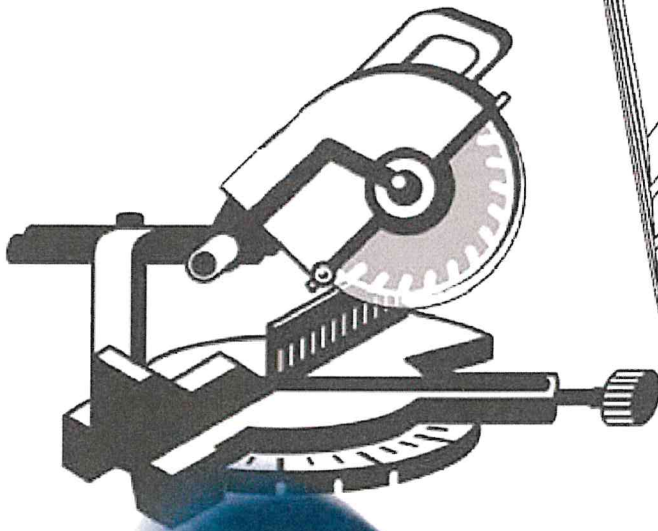
Top Panel Detail



Inside Corner



Miter Cut Corner



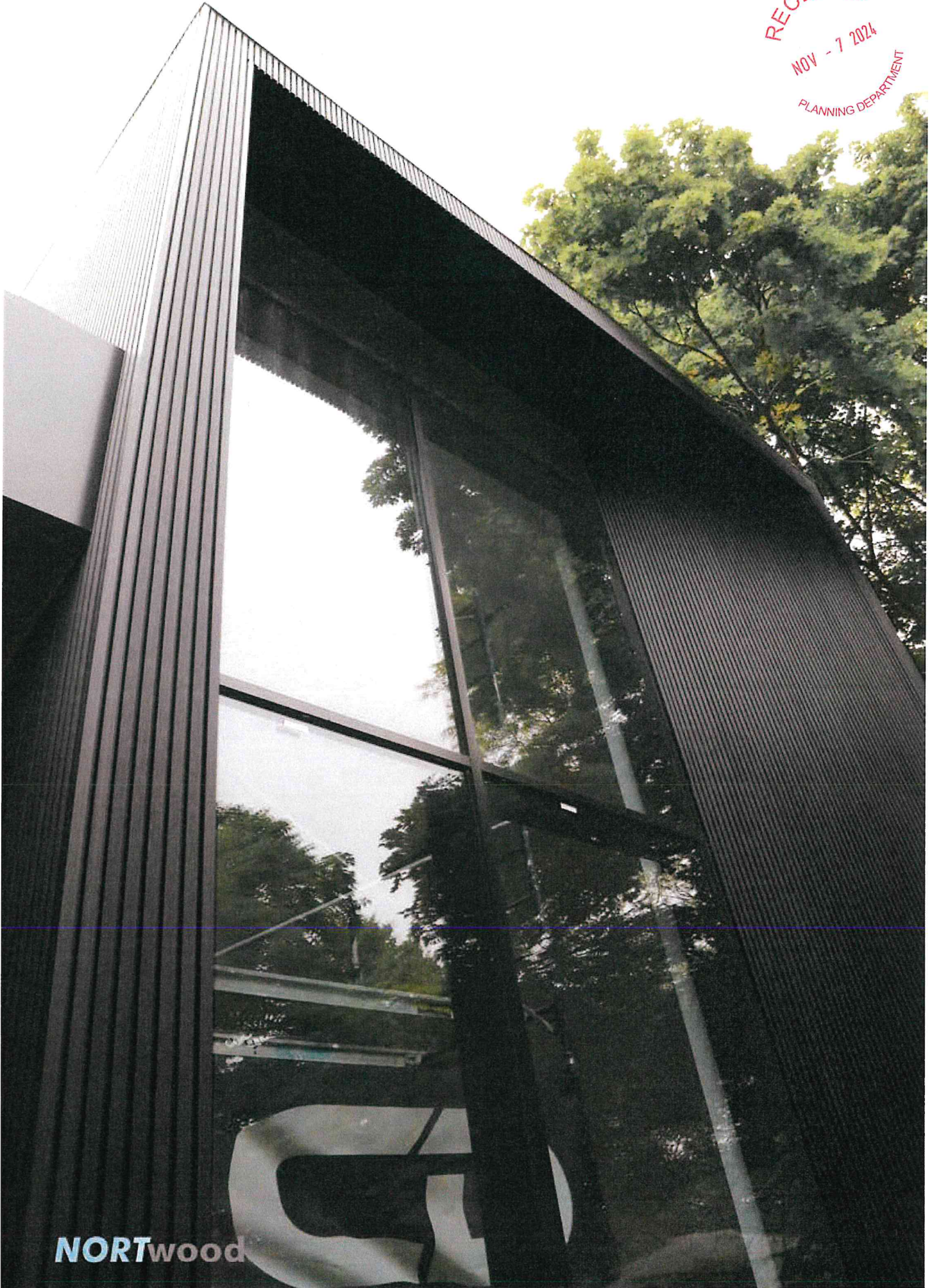
To miter a corner, measure the length from the edge of the soffit or outside corner to the base of the wall. Use this measurement to mark a suitable length on a mitered panel with a marker.

Draw a line through the mark using a rafter angle square, then cut the board with a miter saw tool.

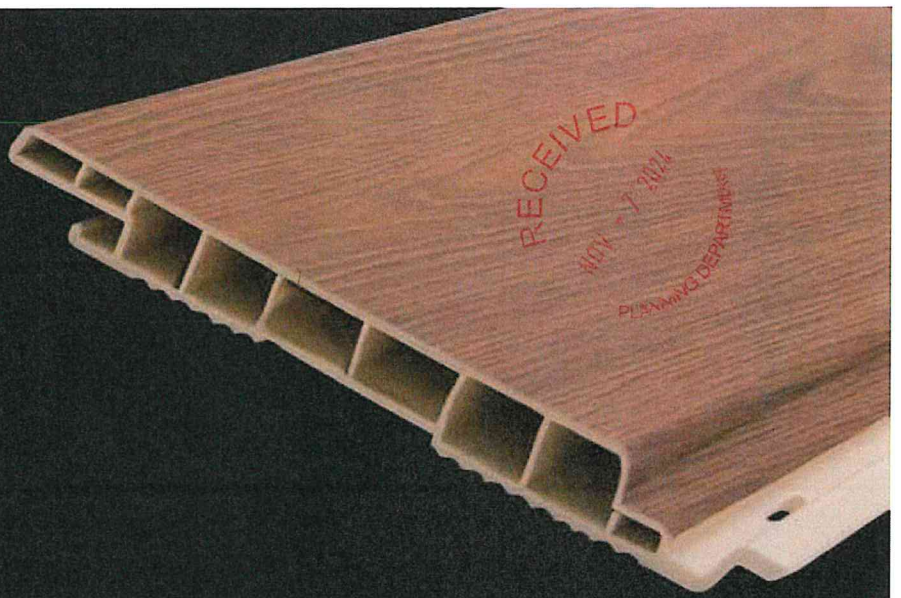


RECEIVED
NOV -1 2024
PLANNING DEPARTMENT

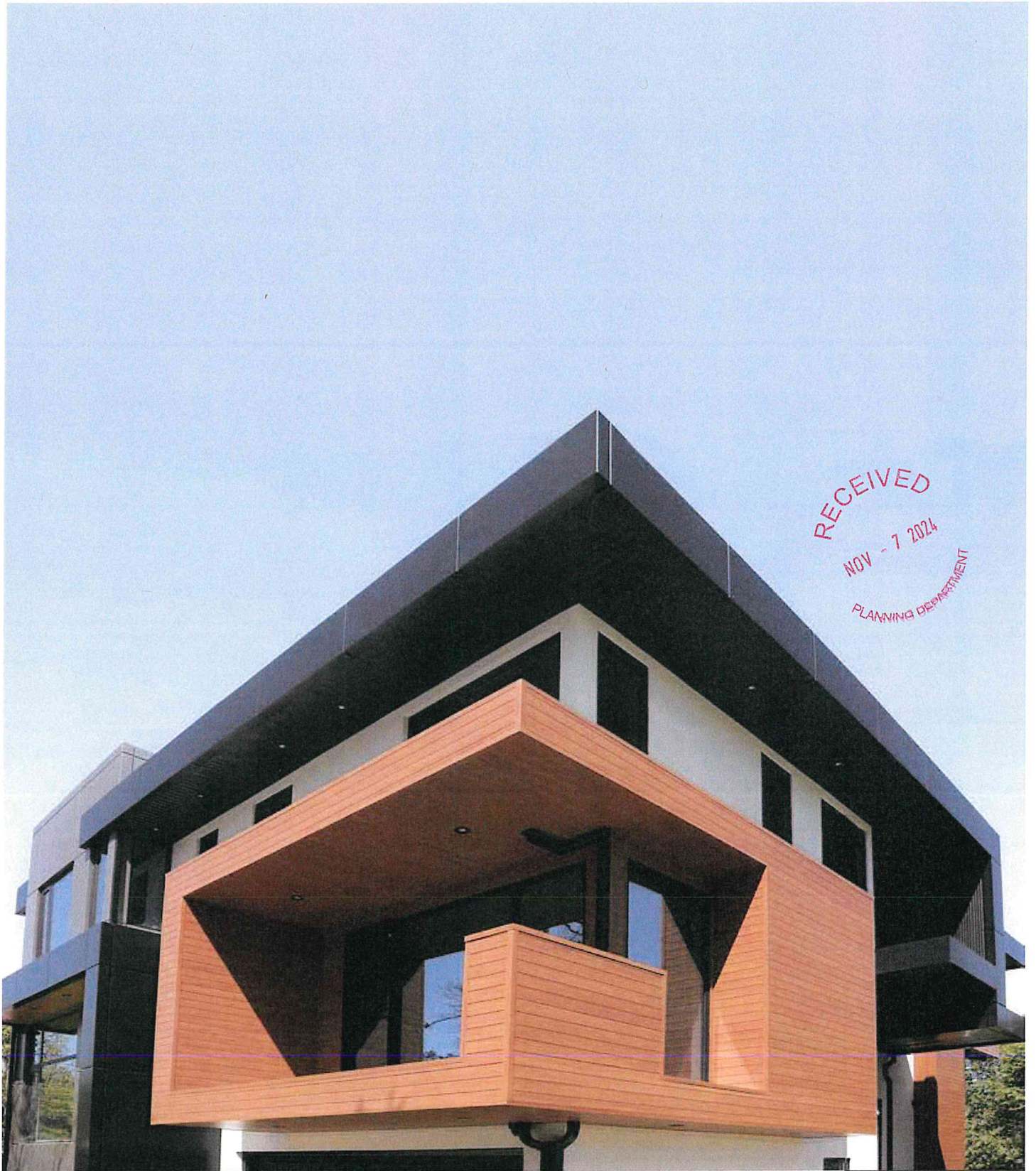
RECEIVED
NOV - 7 2024
PLANNING DEPARTMENT



NORTwood



nortWALL
uPVC Siding



RECEIVED
NOV - 7 2024
PLANNING DEPARTMENT

nortWALL Color Collection



Walnut Wood



Turner Oak



Oak Toffee



Slack Wood



Jet Black



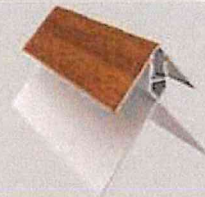
F Trim

12' Aluminum 2-Piece System (Base & Top)
For ends, inside corners Exposure Width: 1 1/2"



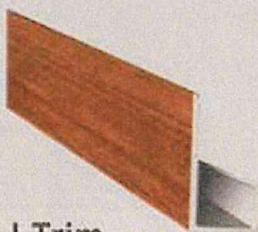
H Trim

12' Aluminum 2-Piece System (Base & Top)
For transitions Exposure Width: 2 1/2"



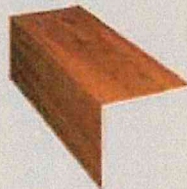
Corner Trim

12' Aluminum 2-Piece System (Base & Top)
For outside corners Exposure Width: 1 1/2"



J Trim

1 1/2" x 1" x 3/4"



L Trim

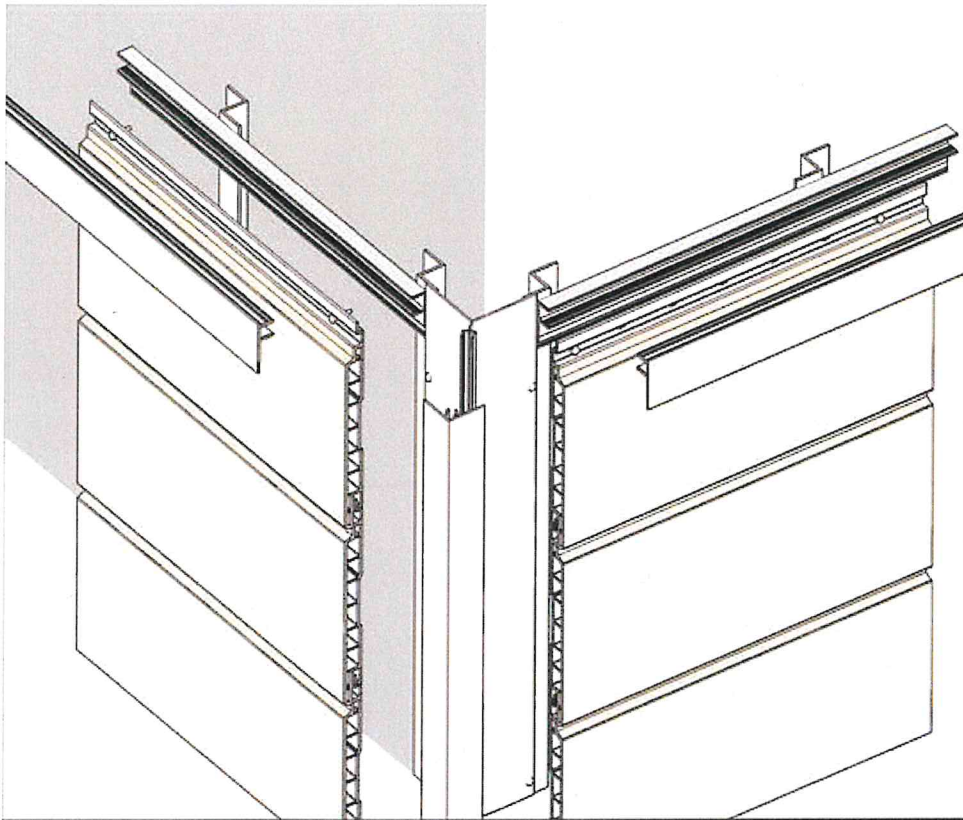
1 1/2" x 2"

RECEIVED
NOV - 7 2024
PLANNING DEPARTMENT

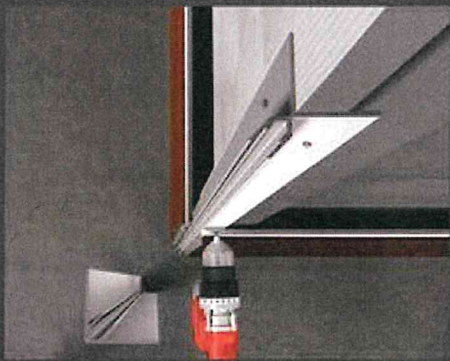


Starter

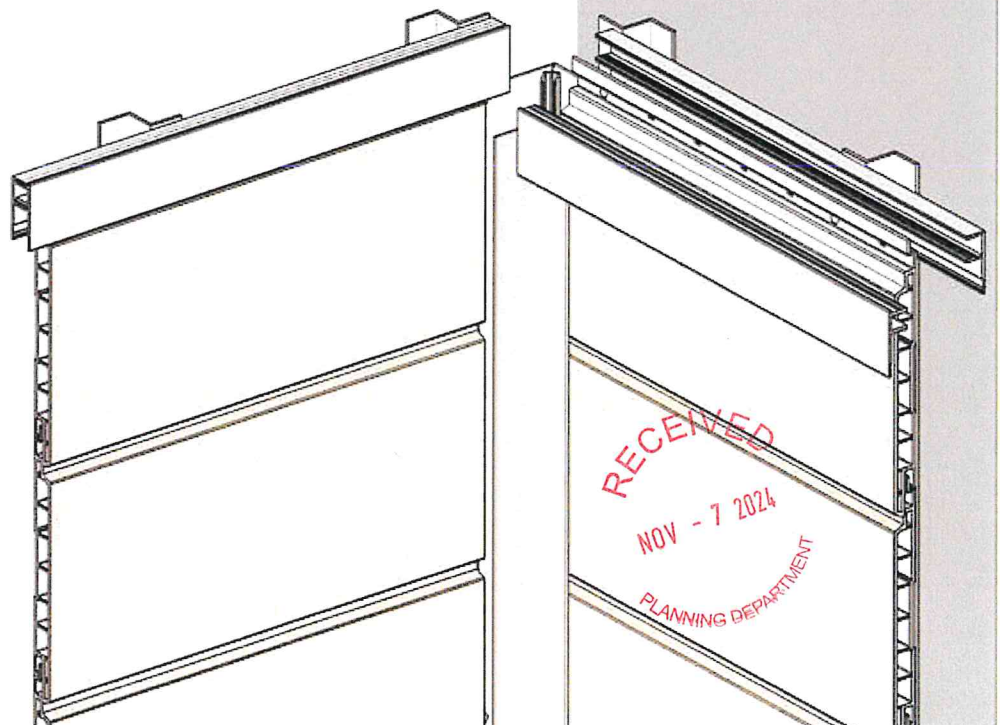
10' & 12' Aluminum



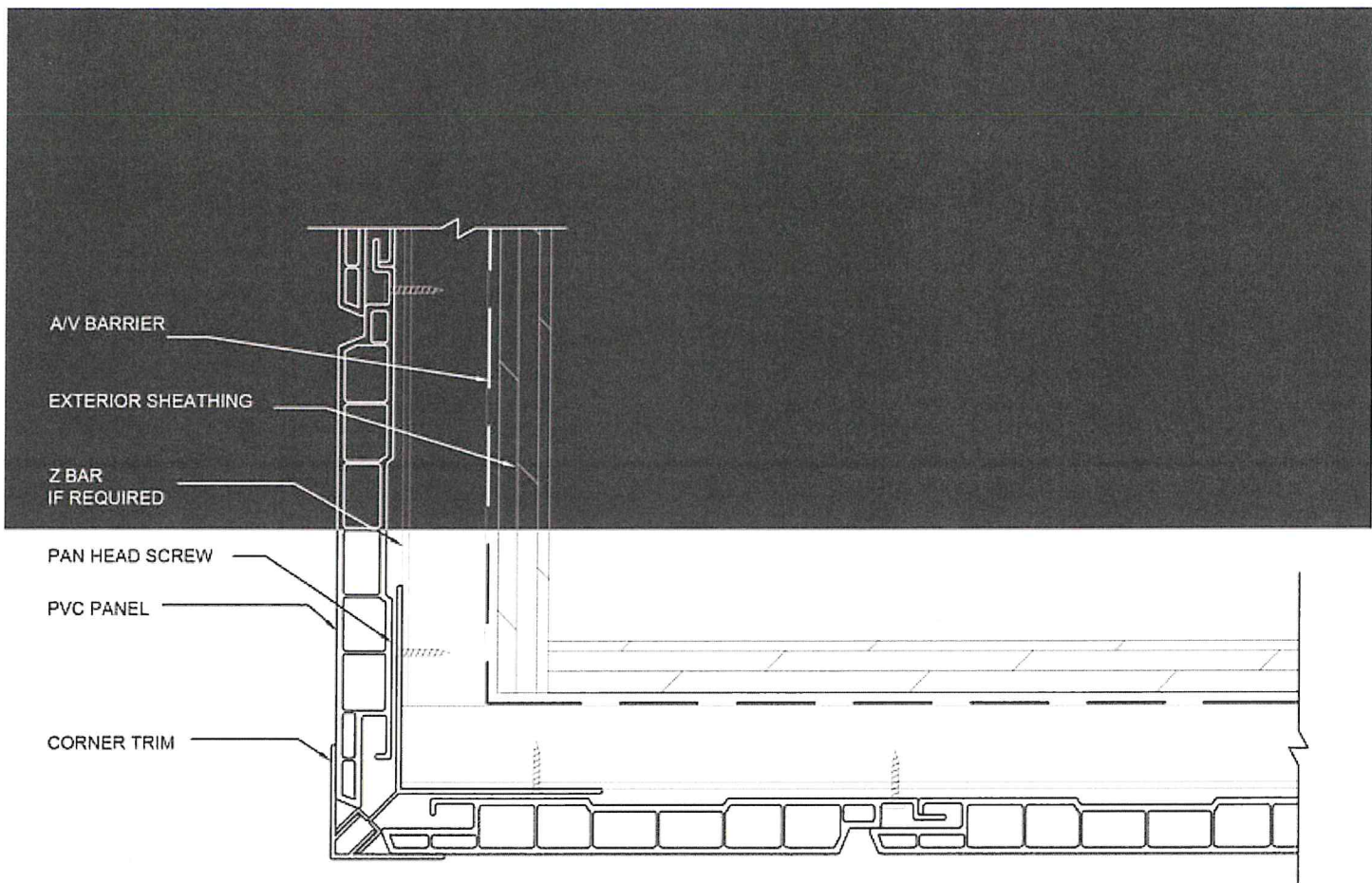
Outside Corner Trims



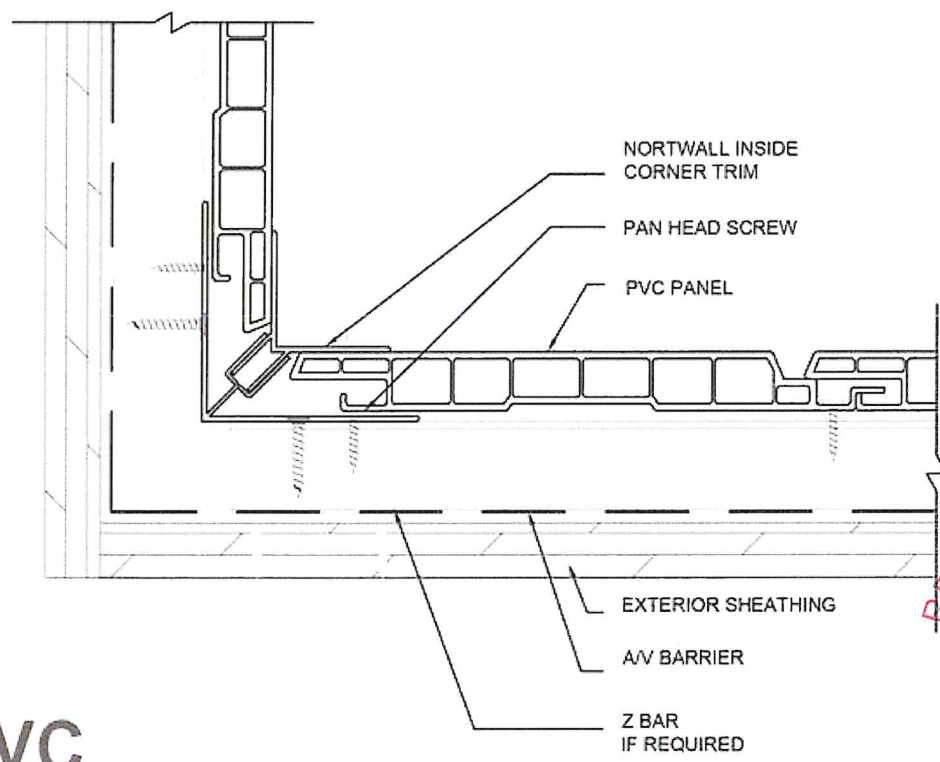
Inside Corner Trims



RECEIVED
NOV - 7 2024
PLANNING DEPARTMENT

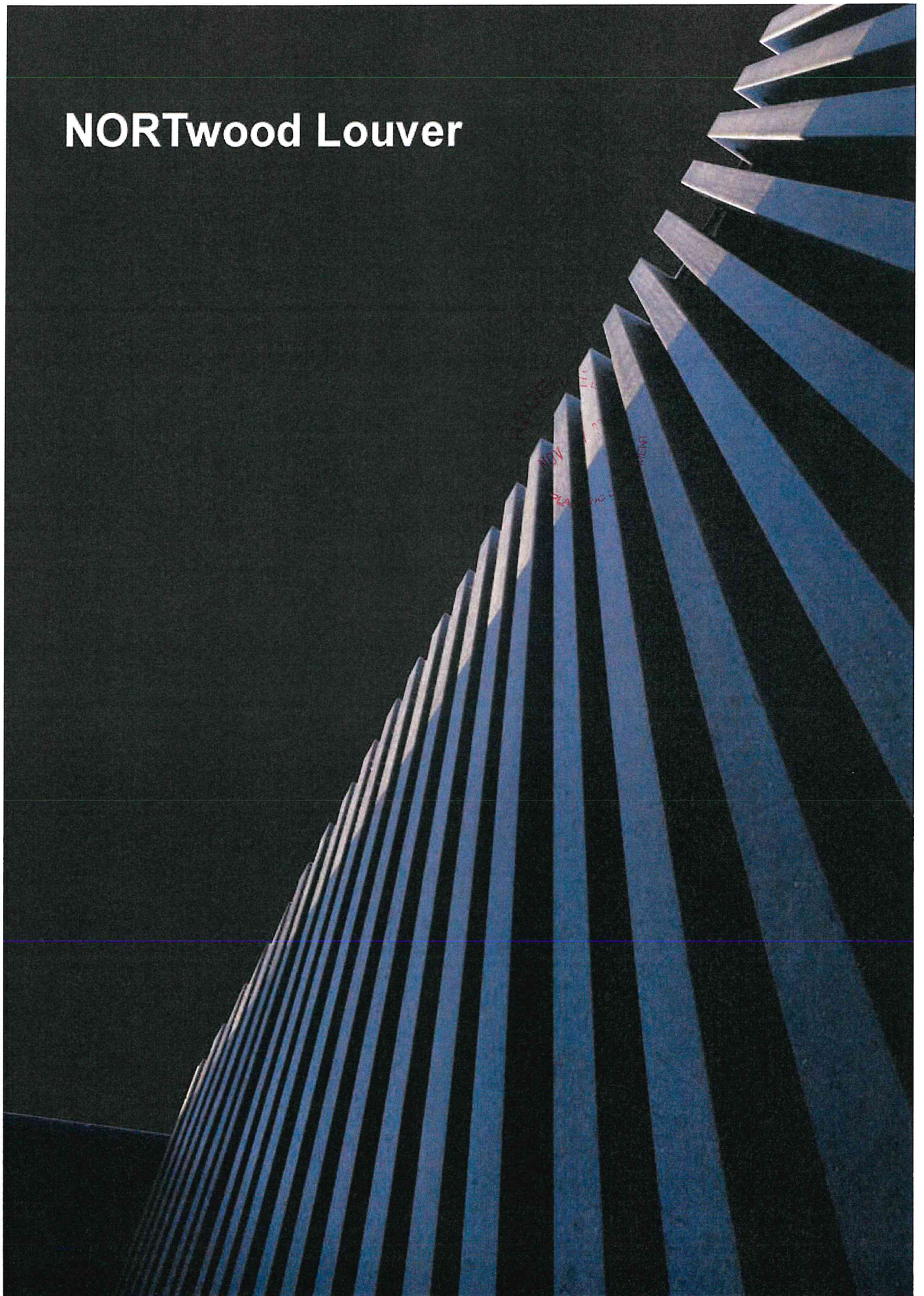


Inside & Outside corner details



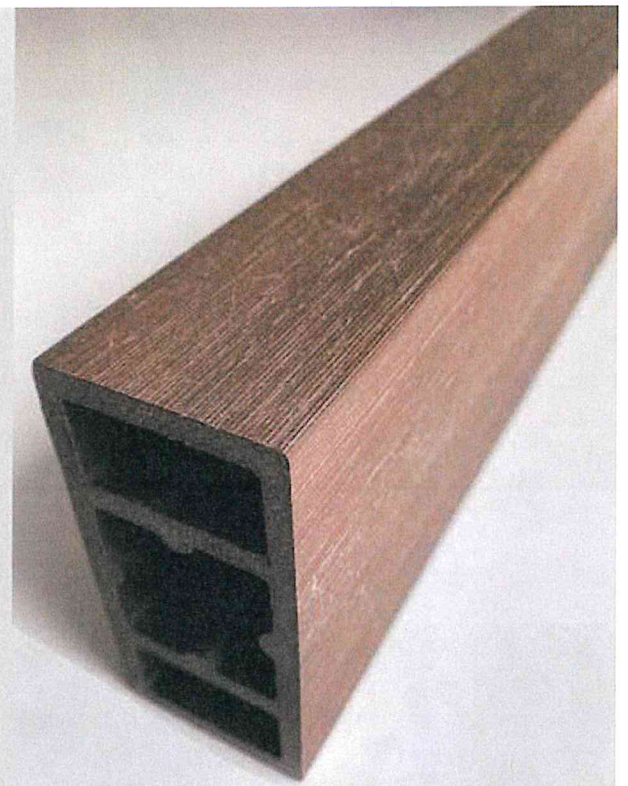
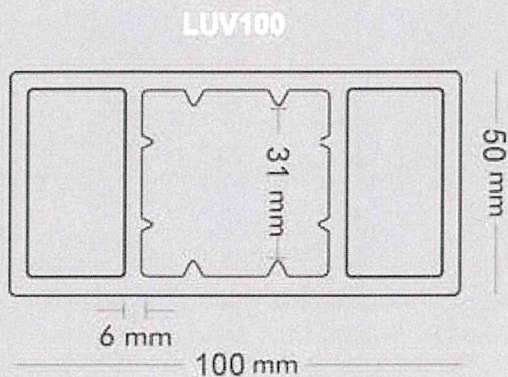
RECEIVED
 NOV - 7 2024
 PLANNING DEPARTMENT

NORTwood Louver



Louver

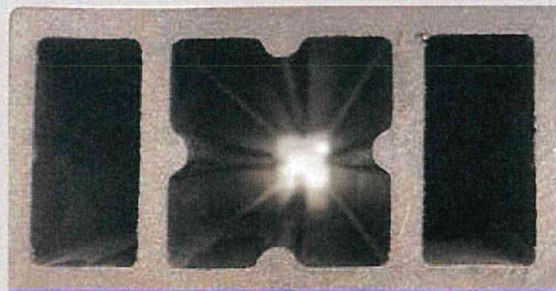
Privacy Screen



50x100mm x3600mm | 2.5 Kg/m
(2"x 4" x 144")

RECEIVED
NOV - 7 2024
PLANNING DEPARTMENT

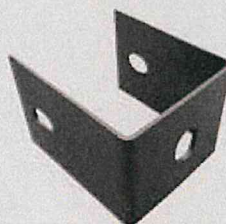




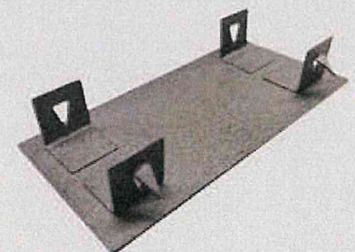
RECEIVED
NOV - 7 2024
PLANNING DEPARTMENT



M6 Louver Screwt



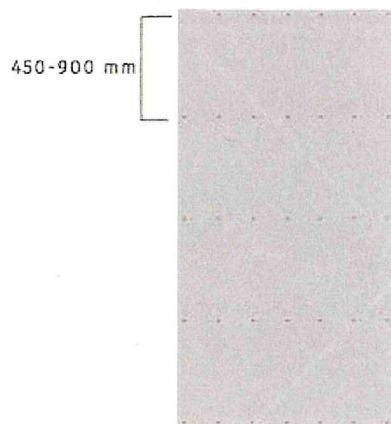
Louver Bracket



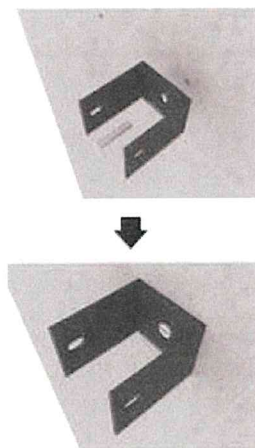
Louver Cap

Louver Installation

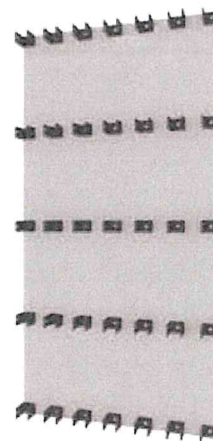
- 1 Pre-drill hole to concrete wall, vertical best distance between every two hole is 450-900 mm. Horizontal distance between two hole will be pre-drilled according to needed distance.



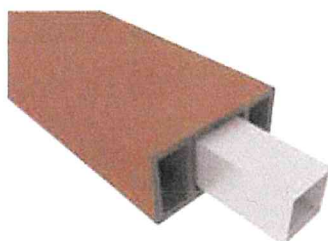
- 2 According to pre-drilled hole, use expansion screw to fix U shape fastener to the concrete wall.



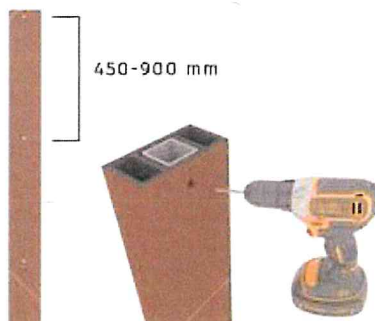
- 3 Reference picture



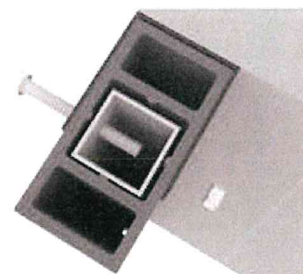
- 4 Insert galvanized square pipe into WPC louver tube, galvanized square pipe should be same length as WPC louver tube.



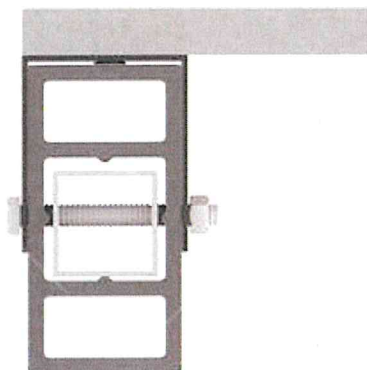
- 5 Pre-drill galvanized square pipe and WPC louver tube at the same time, distance of pre-drill hole should be same distance as pre-drilled hole on wall.



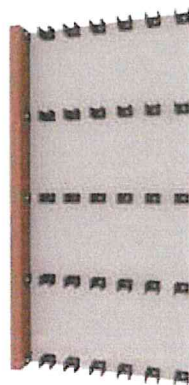
- 6 Put louver tube into the U shape fastener, and then use core screw to fix louver tube to the U shape fastener.



- 7 Tightening core screw till louver tube not looseness.



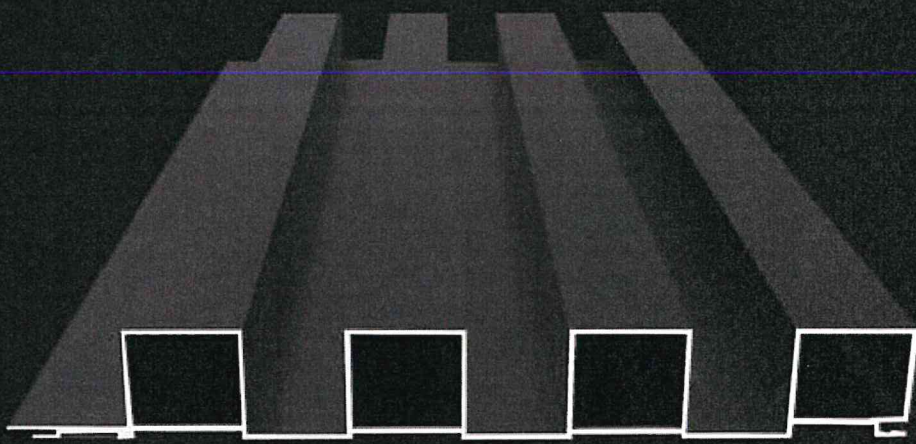
- 8 The rest can be done in the same manner to fix WPC louver tube.



- 9 Finished installation effect.



D SOAL



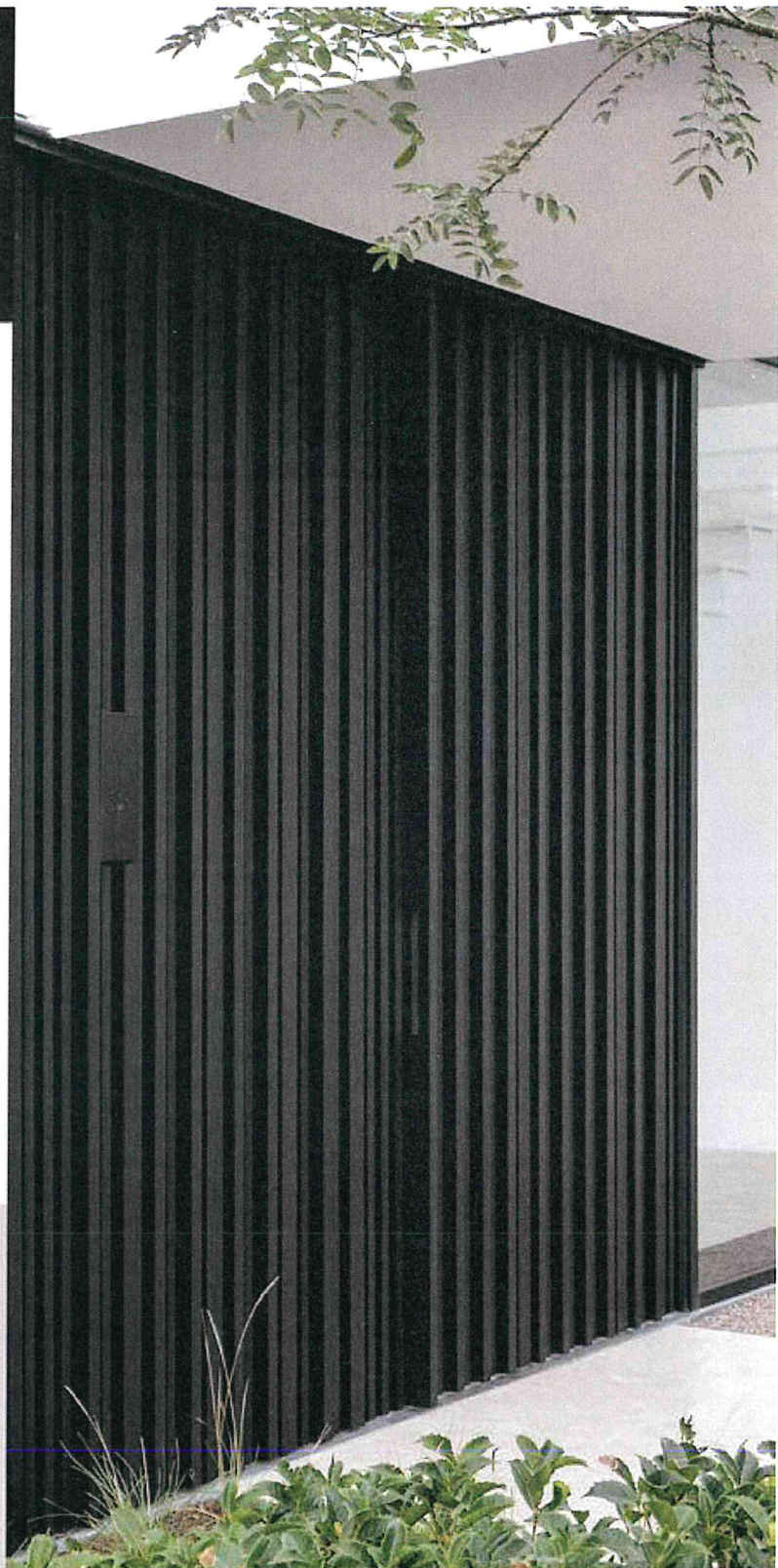
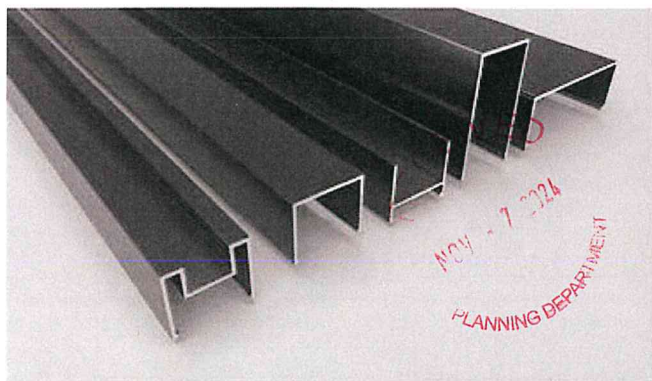
NOV - 7 2024

SOAL

Aluminum Fluted Panel

At the intersection of aesthetics and utility, Dsoal masterfully engineers vertical aluminum facade cladding tailored for external and commercial applications.

Available in a comprehensive palette of standard colors and designed with modularity at its core, Dsoal's architectural solutions infuse an element of sophistication. With an emphasis on accentuated features, these solutions merge additional details with such finesse that they enhance the overall facade.

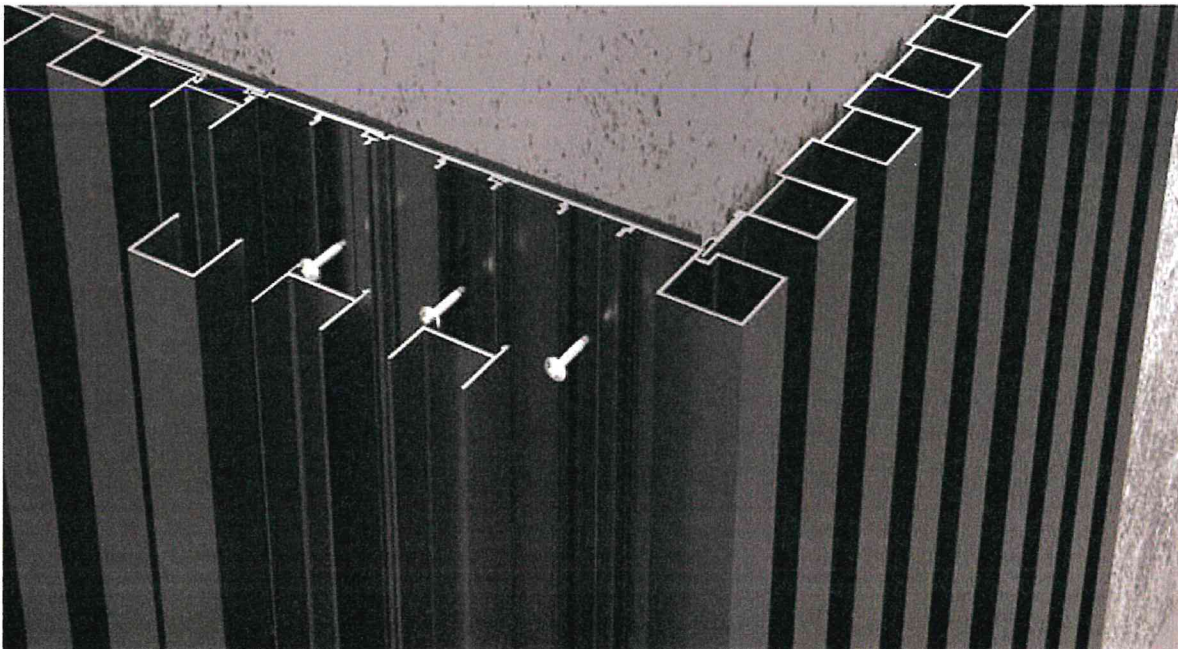
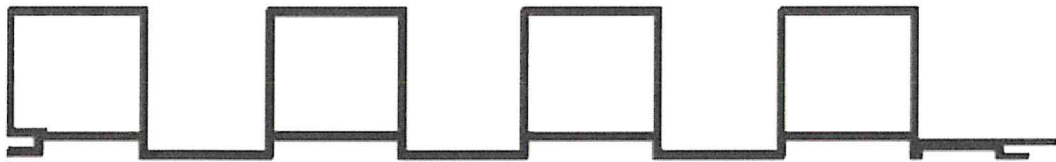
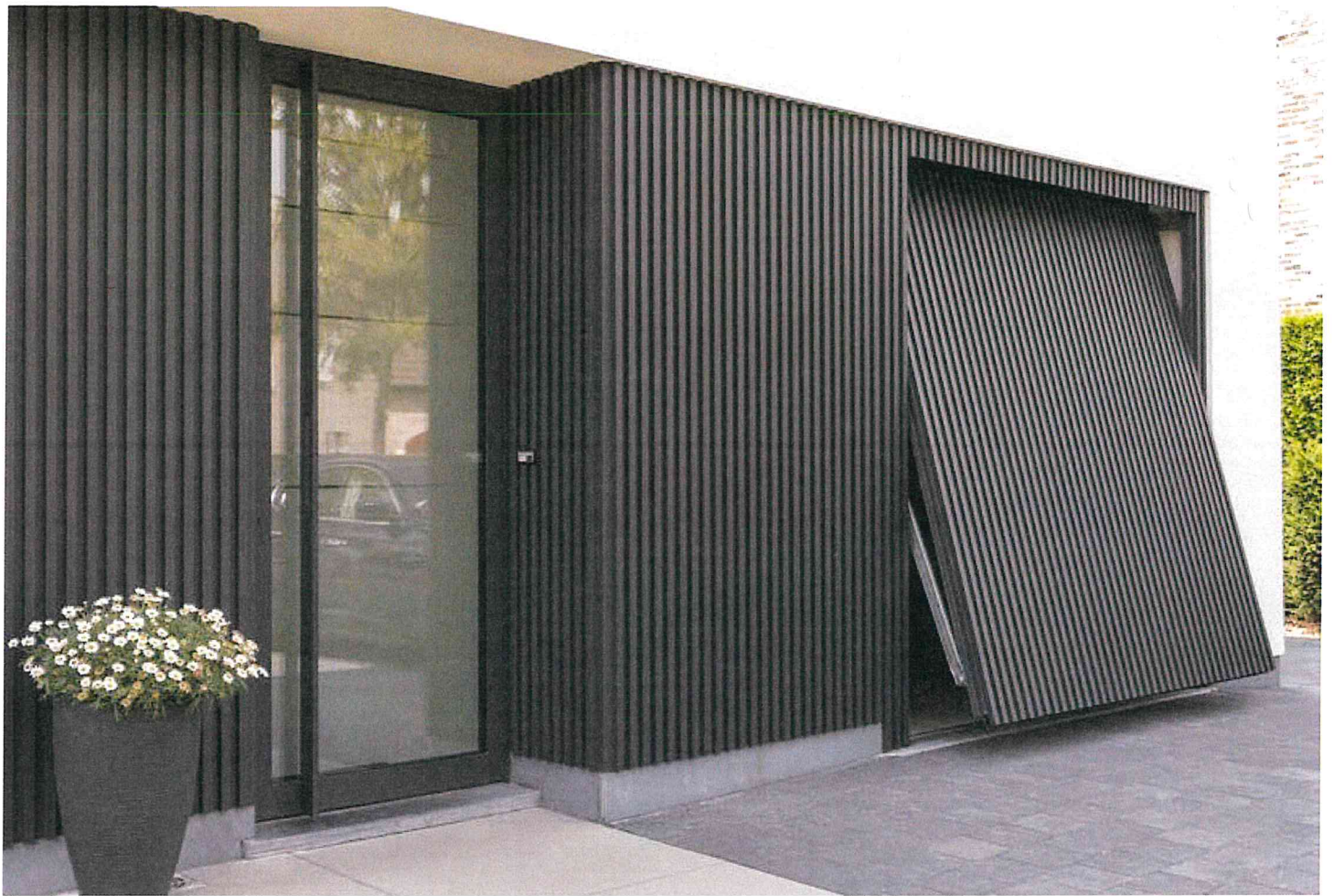


Why You Should Choose Dsoal Panels?

Non-Combustibility: Safety is paramount. Dsoal Panels are non-combustible, ensuring compliance with safety standards and offering peace of mind in terms of fire resistance.

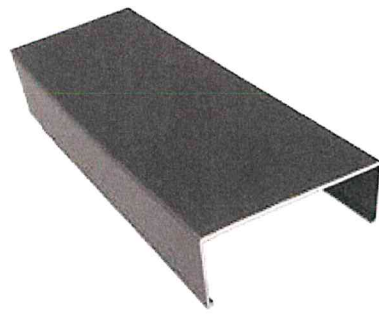
Adaptable Cap System: The innovative Cap System empowers you to easily alter the combination of cap shapes and colors, enabling customization that aligns perfectly with your design vision.

Versatile Application: Whether it's in commercial spaces like hotels and shopping malls or residential areas, Dsoal Panels seamlessly integrate as decorative features, enhancing the ambiance and elevating the overall look and feel.

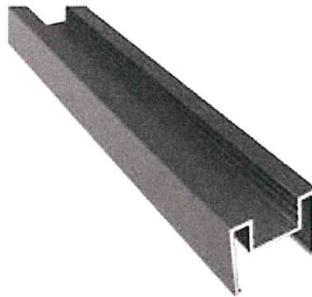


RECEIVED
NOV - 7 2024
PLANNING DEPARTMENT

Wide Cap



Light Channel



Blade Cap



Standard Cap



Extended Cap



RECEIVED
NOV - 7 2024
PLANNING DEPARTMENT

