

RESOLUTION

WHEREAS, the final plat of Ashleaf Farms Section 1, has been submitted to the Council of The City of Oklahoma City for acceptance of the dedications contained in said plat; and

WHEREAS, the Council determines that said dedications should be accepted, and filed in the Office of the Clerk of The City of Oklahoma City.

NOW, THEREFORE, BE IT RESOLVED that the Mayor and City Clerk are directed to execute this acceptance of the dedications contained in said plat.

ADOPTED by the Council and SIGNED by the Mayor of The City of Oklahoma City, Oklahoma, on this 27TH day of AUGUST, 2024.

ATTEST:

Amy K. Simpson
CITY CLERK

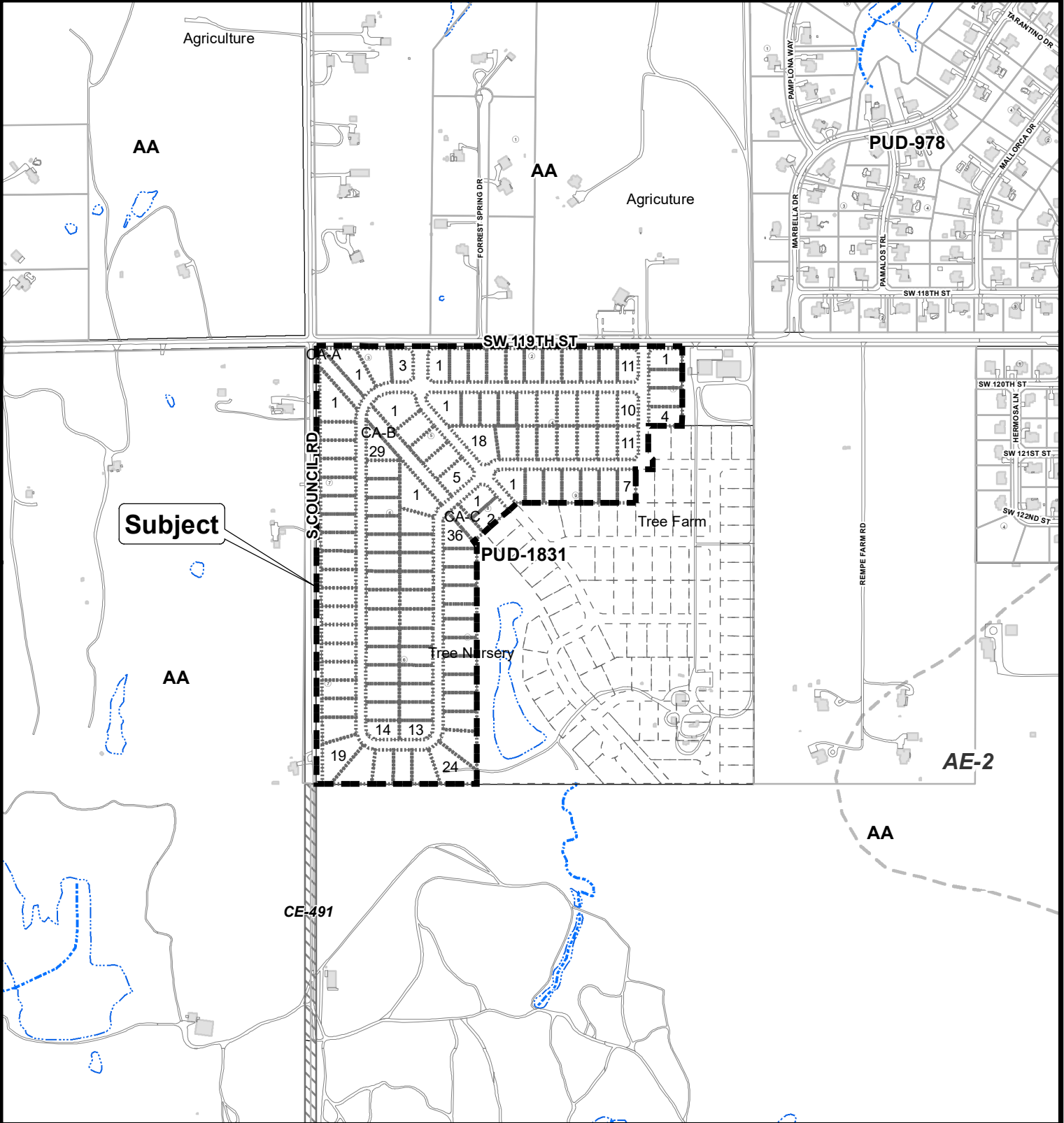


David Holt
MAYOR

REVIEWED for form and legality.

Susan Ramehall
ASSISTANT MUNICIPAL COUNSELOR

Case No: C-7453 Final Plat of Ashleaf Farms Section 1
Developer: Premium Land, LLC
Engineer: Crafton Tull



Final Plat Application

