



INTERSECTION IMPROVEMENTS

N MAY AVENUE AND NW 192ND STREET

PRELIMINARY ENGINEERING REPORT

PROJECT TC-0633

Prepared for:

The City of Oklahoma City



April 2024
Project No. TC-0633, Task 1



APPROVAL SHEET

Preliminary Engineering Report – TC-0633

Intersection Improvements of North May Avenue and NW 192 Street

Prepared by:

Brittany McAnelly
Brittany McAnelly, PE

olsson

C.A. 2483 EXP. 06-30-2025

11600 Broadway Extension, Suite 300

Oklahoma City, OK 73114

(405) 242-6600



Recommended for Approval:

Debbie Miller

Debbie Miller, PE

Public Works Director / City Engineer

APPROVED by the Council of the City of Oklahoma City this 21ST day of

MAY, 2024.

Amy K. Simpson
City Clerk



David Holt
Mayor



TABLE OF CONTENTS

INTRODUCTION.....	2
Scope.....	2
Budget.....	3
Cost Estimate Summary.....	3
Schedule.....	3
Site Plan	4
BACKGROUND	5
Existing Conditions.....	5
UTILITIES	6
RIGHT-OF-WAY	7
COST ESTIMATE.....	8
 Appendix A – Detailed Preliminary Cost Estimate.....	
Appendix B – 60% Plan Set.....	

INTRODUCTION

Scope

The City of Oklahoma City approved engineering services for the roadway and traffic design services to design traffic signalization and ADA upgrades at the intersection of ARPA funded project at N May Avenue and NW 192nd Street. ADA compliant ramps and landings will be provided for pedestrian crossings on all four legs of the intersection. There are existing ramps crossing the east leg of the intersection and the south leg of the intersection. These ramps do not appear to meet ADA criteria and will be removed. Eight total ramps will be designed and installed to provide crossings for N May Avenue and NW 192nd Street. Crosswalks, ADA ramps, pedestrian pushbuttons, and pedestrian signal heads will be provided for all four intersection crossing movements.

The intersection is currently unsignalized with stop-control in all directions. A signal system will be installed including signal mast arm poles controlling each approach, signal controller and cabinet, and Wavetronics radar detection system. Stop line detection and advanced dilemma zone area detection will be provided on all four approaches. Also included will be advanced detection on both the NW 192nd Street and N May Avenue approaches, with flashing yellow arrow heads where appropriate. The scope also includes restriping of the intersection.



Budget

The fixed limit construction budget for this project is \$480,000

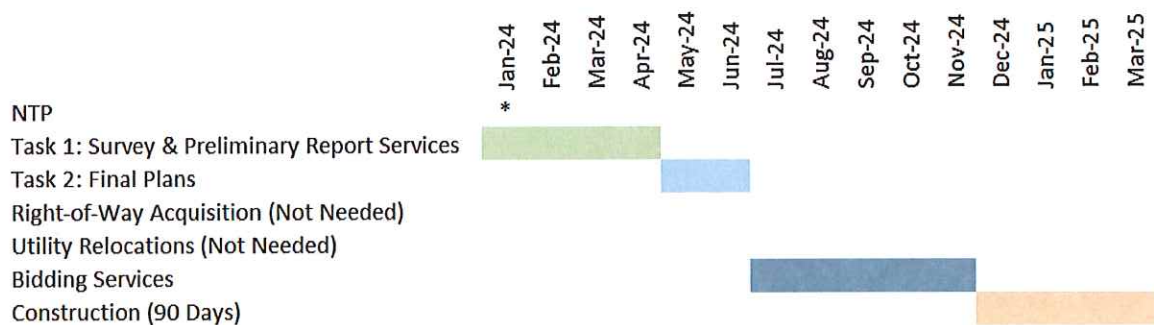
Cost Estimate Summary

The design of N May Avenue and NW 192nd Street has a preliminary construction cost estimate of \$475,502. No right-of-way acquisition or utility relocation appear to be necessary for this project.

Schedule

The Olsson design team understands that the project schedule is especially critical because this is an ARPA project.

- Final Plan Completion – June 2024
- Begin Construction Date – December 2024
- Construction Completion – March 2025





Site Plan



The detailed construction plans for the N May Avenue and NW 192nd Street intersection project is included in **Appendix B** of this report.

BACKGROUND

Existing Conditions

Roadway

The existing roadway for NW 192nd Street consists of 5-12 ft lanes at the intersection with N May Avenue, including exclusive left-turn lanes with storage lengths of 80 feet on the west leg and 150 feet on the east leg. The existing street is an undivided asphalt-paved facility with curb and gutter. There are no horizontal curves in the vicinity of the intersection. The road is posted at 50 miles per hour on the north leg of N May Avenue, and 40 miles per hour on the south leg and is relatively flat. The pavement width is approximately 60 feet wide with 8-inch tall curb and gutter.

The City of Oklahoma City designates both N May Avenue and NW 192nd Street as a Major Arterial streets. The existing roadway for N May Avenue has 5-12 ft lanes at the intersection with NW 192nd Street, including exclusive left-turn lanes with storage lengths of 100 feet on the south leg and 75 feet on the north leg. The existing street is an undivided asphalt-paved facility with curb and gutter. There are no horizontal curves in the vicinity of the intersection. The street is posted at 45 miles per hour and is relatively flat. The pavement width is approximately 60 feet wide with 8-inch tall curb and gutter.

Survey

The project area was surveyed in the February of 2024. The survey included full topographic survey, boundary survey, and utility locates. Available as-builts for the project area were collected through an open records request and through the City's Open Data Portal.

Traffic

The existing NW 192nd Street corridor carries an annual average daily traffic (AADT) volume of 8,026 (2023) vehicles per day on the west leg of the intersection and 10,306 (2023) on the east leg of the intersection.

The existing N May Avenue corridor carries an annual average daily traffic (AADT) volume of 6,574 (2021) vehicles per day.

The intersection is currently unsignalized with stop-control for all directions.

UTILITIES

There are currently no identified utility relocations required to accommodate this project, but additional utility coordination is necessary as detailed below.

A 12" CIP waterline main runs along the west side of N May Avenue located approximately 45' from the Centerline Survey. Another 12" CIP waterline main runs along the south side of NW 192nd Street located approximately 46' from the Centerline Survey. Coordination will be needed with regards to horizontal clearance.

There are two existing sewer lines that intersect at the SE quadrant of the intersection. One 18" sewer line runs parallel to NW 192nd Street and starts at approximately 61' east of the N May Avenue Centerline Survey, runs east, then offsets south approximately 60' from the NW 192nd Street Centerline Survey. The second sewer line runs east of and parallel to N May Avenue and begins at the same location as the previous sewer line and offset approximately 61' from the N May Avenue Centerline Survey. These lines are outside of the area of proposed construction for this project.

A 6" Gas Gathering steel gas line runs along the east side of N May Avenue located approximately 46' from Centerline Survey. Coordination will be required to ensure clearance requirements are met on the NE corner.

A 4" ONG PVC gas line runs along the west side of N May Avenue located approximately 38' from Centerline Survey.

A 1-1/4" AT&T Fiber Optic PVC line runs along the west side of N May Avenue located approximately 47' from Centerline Survey. The line crosses N May Avenue at approximately 69' north of the intersection of the Centerline Survey. The line then juts southeast approximately 48' and then runs along NW 192nd Street approximately 39' north of Centerline Survey.

Two more 1/2" AT&T Fiber Optic cable lines run along the south side of NW 192nd Street approximately 47' and 57' from Centerline Survey. These lines run parallel to the curblin and then run west of N May Avenue approximately 43' and 44' from Centerline Survey.

Overhead power lines run along the north side of NW 192nd Street approximately 39' from Centerline Survey. Overhead power lines also run along the south side of NW 192nd Street approximately 54' from Centerline Survey. Coordination with OG&E and communication underbuilt will be required to ensure proposed mast arm poles meet clearance requirements.

RIGHT-OF-WAY

There are currently no apparent right-of-way impacts to accommodate this intersection improvement project.

The existing right-of-way along N May Avenue is 112 feet total (50 feet west and 62 feet east of the Centerline Survey) on the south side of the intersection. The existing right-of-way along N May Avenue is 106 feet total (50 feet on the west side and 56 feet east of the Centerline Survey) on the north side of the intersection.

The existing right-of-way along NW 192nd Street is 115 feet total (60 feet south and 55 feet north of the Centerline Survey) on the west side of the intersection. The existing right-of-way along NW 192nd Street is 135 feet total (60 feet south and 75 feet north of the Centerline Survey) on the east side of the intersection.

All proposed pedestrian ramps, mast arm poles, and pedestrian poles are able to be constructed within existing right-of-way.

COST ESTIMATE

The detailed construction cost estimate for the N May Avenue and NW 192nd Street intersection project is included in **Appendix A** of this report. Estimates include Roadway, Traffic, and Miscellaneous Items as summarized below.

Summary of Construction Costs:

Roadway Items (Sidewalk, ADA Ramps, Earthwork, etc.)	\$53,535
Traffic Signal Items (Traffic Signal Improvements)	\$353,065
Misc. Items (Traffic Control, Signing, Striping, Mobilization, etc.)	\$68,902
Total Construction Cost	\$475,502

APPENDIX A

Detailed Preliminary Cost Estimate



OPINION OF PROBABLE COST (OPC)

TC-0633: N May Ave and NW 192ND St

60% SUBMITTAL

4/19/2024

Roadway Items		Quantity	Unit	Unit Cost	Item Cost
200-00	UNCLASSIFIED EXCAVATION	0	CY	\$15.00	\$0.00
202-00	BORROW	350	CY	\$40.00	\$14,000.00
305-00	CURB AND GUTTER(2'-8")(8" BARRIER)	150	LF	\$45.00	\$6,750.00
710-01	E.P.S. OPTICAL DETECTOR	4	EA	\$1,000.00	\$4,000.00
710-02	E.P.S. 2 CHANNEL PHASE DETECTOR	2	EA	\$3,700.00	\$7,400.00
710-03	OPTICAL DETECTOR CABLE	1050	LF	\$5.00	\$5,250.00
711-00	VEHICLE ACTUATED TRAFFIC SIGNAL CONTROL ASSEMBLY	1	LSUM	\$26,000.00	\$26,000.00
713-08	2" TRAFFIC SIGNAL CONDUIT (TRENCHED)	275	LF	\$21.00	\$5,775.00
713-09	2" TRAFFIC SIGNAL CONDUIT (BORED)	50	LF	\$35.00	\$1,750.00
713-10	3" TRAFFIC SIGNAL CONDUIT (TRENCHED)	65	LF	\$24.00	\$1,560.00
713-11	3" TRAFFIC SIGNAL CONDUIT (BORED)	400	LF	\$40.00	\$16,000.00
714-01	TWO CONDUCTOR SHIELDED CABLE	50	LF	\$4.00	\$200.00
714-04	(5) CONDUCTOR TRAFFIC SIGNAL ELECTRICAL CABLE	4,500	LF	\$4.00	\$18,000.00
714-05	(7) CONDUCTOR TRAFFIC SIGNAL ELECTRICAL CABLE	350	LF	\$6.50	\$2,275.00
714-06	(21) CONDUCTOR TRAFFIC SIGNAL ELECTRICAL CABLE	490	LF	\$7.00	\$3,430.00
714-10	(1/CONDUCTOR)(AWG NO. 6) ELECTRICAL CONDUCTOR	500	LF	\$5.00	\$2,500.00
714-11	(1/CONDUCTOR)(AWG NO. 10) ELECTRICAL CONDUCTOR	550	LF	\$3.00	\$1,650.00
715-01	THREE (3) SECTION TRAFFIC SIGNAL HEAD	8	EA	\$1,200.00	\$9,600.00
715-02	FOUR (4) SECTION TRAFFIC SIGNAL HEAD	4	EA	\$1,650.00	\$6,600.00
717-00	PEDESTRIAN SIGNAL HEAD	8	EA	\$800.00	\$6,400.00
722-00	PEDESTRIAN PUSH BUTTON AND SIGN	8	EA	\$1,250.00	\$10,000.00
724-33	POLE & SPECIFIED 40' MAST ARM(S)	1	EA	\$18,000.00	\$18,000.00
724-34	POLE & SPECIFIED 45' MAST ARM(S)	1	EA	\$20,000.00	\$20,000.00
724-35	POLE & SPECIFIED 45' MAST ARM (S) & LUM. ARM (INSTALLED)	1	EA	\$22,000.00	\$22,000.00
724-36	POLE & SPECIFIED 55' MAST ARM (S) & LUM. ARM (INSTALLED)	1	EA	\$24,000.00	\$24,000.00
724-67	PEDISTAL POLE W/ 5-FT MOUNTING HEIGHT	2	EA	\$1,200.00	\$2,400.00
724-68	PEDISTAL POLE W/ 10-FT MOUNTING HEIGHT	6	EA	\$1,200.00	\$7,200.00
725-00	STRUCTURAL CONCRETE	29	CY	\$1,200.00	\$34,800.00
725-01	REINFORCING STEEL	4,072	LBS	\$2.50	\$10,180.00
726-02	PULL BOX TYPE II	4	EA	\$1,200.00	\$4,800.00
727-00	ROADWAY LUMINAIRE	2	EA	\$20.00	\$40.00
729-00	SHEET ALUMINUM SIGNS	96	SF	\$10.00	\$960.00
729-01	REMOVAL OF EXISTING SIGNS	4	EA	\$100.00	\$400.00
729-02	MAST ARM MOUNTED SIGNS	89	SF	\$55.00	\$4,895.00
733-00	SQUARE STEEL SIGN POST	52	LF	\$20.00	\$1,040.00
735-00	TRAFFIC STRIPE (PLASTIC) (4" WIDE)	5,594	LF	\$1.50	\$8,391.00
735-01	TRAFFIC STRIPE (PLASTIC) (12" WIDE)	264	LF	\$4.00	\$1,056.00
735-02	TRAFFIC STRIPE (PLASTIC) (24" WIDE)	647	LF	\$8.00	\$5,176.00
736-00	TRAFFIC STRIPE (PLASTIC) (ARROW) (SINGLE)	10	EA	\$150.00	\$1,500.00
742-00	REMOVE TRAFFIC STRIPE (4" WIDE)	6,013	LF	\$3.00	\$18,039.00
744-04	RADAR VEHICLE DETECTION FOR 4-WAY INTERSECTION	1	EA	\$75,000.00	\$75,000.00
801-00	CONSTRUCTION STAKING	1	LSUM	\$4,700.00	\$4,700.00
802-00	CONSTRUCTION TRAFFIC CONTROL	1	LSUM	\$7,000.00	\$7,000.00
809-00	MOBILIZATION	1	LSUM	\$22,000.00	\$22,000.00
810-00	CLEARING AND GRUBBING	1	LSUM	\$2,000.00	\$2,000.00
812-02	REMOVE CURB AND GUTTER	155	LF	\$15.00	\$2,325.00

812-07	SAWCUT PAVEMENT	178	LF	\$8.00	\$1,424.00
812-08	REMOVAL OF SIDEWALK	127	SY	\$40.00	\$5,080.00
823-00	SIDEWALK	98	SY	\$70.00	\$6,860.00
830-00	ADA CURB RAMP (8")	8	EA	\$850.00	\$6,800.00
830-01	TACTILE MARKERS/TRUNCATED DOMES	85	SY	\$60.00	\$5,100.00
840-00	SOLID SLAB SODDING	416	SY	\$6.00	\$2,496.00
900-02	SILT SOCK	2	EA	\$250.00	\$500.00
900-04	FILTER FABRIC SILT FENCE-COMPLETE IN PLACE	50	LF	\$4.00	\$200.00
Total Construction Cost					\$475,502.00
City Fixed-Limit Cost					\$480,000.00

APPENDIX B

60% Plan Set

APR 2024

NOTES

- [illegible]

GENERAL NOTES

- [illegible]

GENERAL EXAMINATION NOTES

- [illegible]

DEPARTMENT	FAX #	PHONE #
DISPATCH SERVICES	442-1507	297-2571
SUPPLY MANAGEMENT	237-3365	297-2571
VOICE SUPPORT SERVICES	316-1140	297-1140
CRIME DEPARTMENT	297-5329	297-5314
EMERGENCY OPERATIONS CENTER	474-1609	297-2275

- [illegible]

CONSTRUCTION ACTIVITIES THAT RESULT A LAND DISTURBANCE OF FOWLS TO OR GREATER THAN ONE (1) ACRE, OR LESS THAN ONE (1) ACRE IF THEY ARE PART OF A LARGER COMBINATION OF DEVELOPMENT OR SALE THAT TOTALS AT LEAST ONE (1) ACRE MUST OBTAIN A PERMIT FROM ONE OF THE (000-00-0726) FOR A STORMWATER DISCHARGE FROM CONSTRUCTION ACTIVITIES. THIS MEANS THAT LAND DISTURBANCE OF ONE (1) ACRE OR MORE MUST PERMIT WITH CDEQ AND THE CITY OF OKLAHOMA CITY. STORMWATER QUALITY

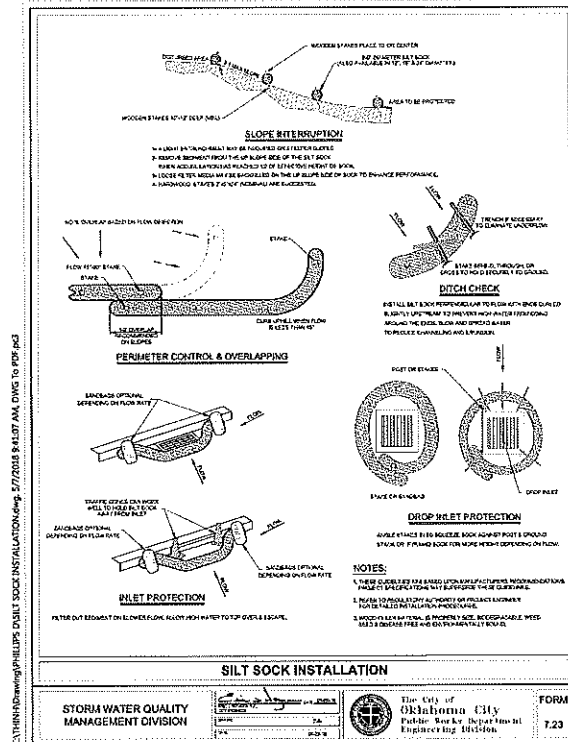
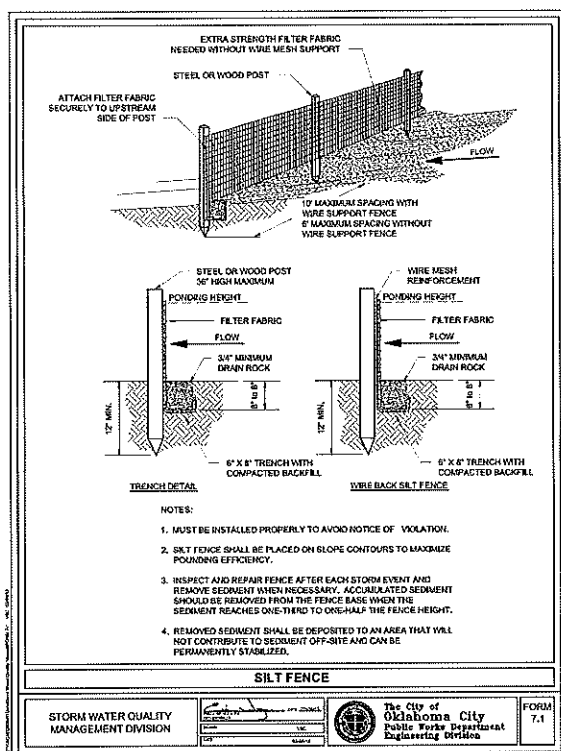
THIS DOCUMENT IS PRELIMINARY IN NATURE AND IS NOT A FINAL, SIGNED AND SEALED DOCUMENT.

Day	TH	1 MAY AVE & NW 92ND ST	OKLAHOMA COUNTY
Serial	81	GENERAL NOTES	
Photo	8		
Acct #1	82		
Acct #2			
<div> <div> <div>OKLAHOMA COUNTY</div> <div>IC-9533</div> <div>Serial 2</div> </div> </div>			

SPECIAL R10-3 SIGN (9' X 12')
SEEKED TO NOTE YS-211

Soc	50	11 MAY AVE & 100 128 ST	(62) ENOVA CORP
Stork	21		
Cover	25	PAY ITEM NOTES	
NATL	100		
nation		IC-653	3





THIS DOCUMENT IS PRELIMINARY IN NATURE AND IS NOT A FINAL, SIGNED AND SEALED DOCUMENT.

Design	701	11704Y AVE & NW 192ND ST	CITY OF OKLAHOMA COUNTY
Drawn	201		
Checked	201		
Approved	201		
Revised	201		
Notes	201		

EROSION CONTROL DETAILS

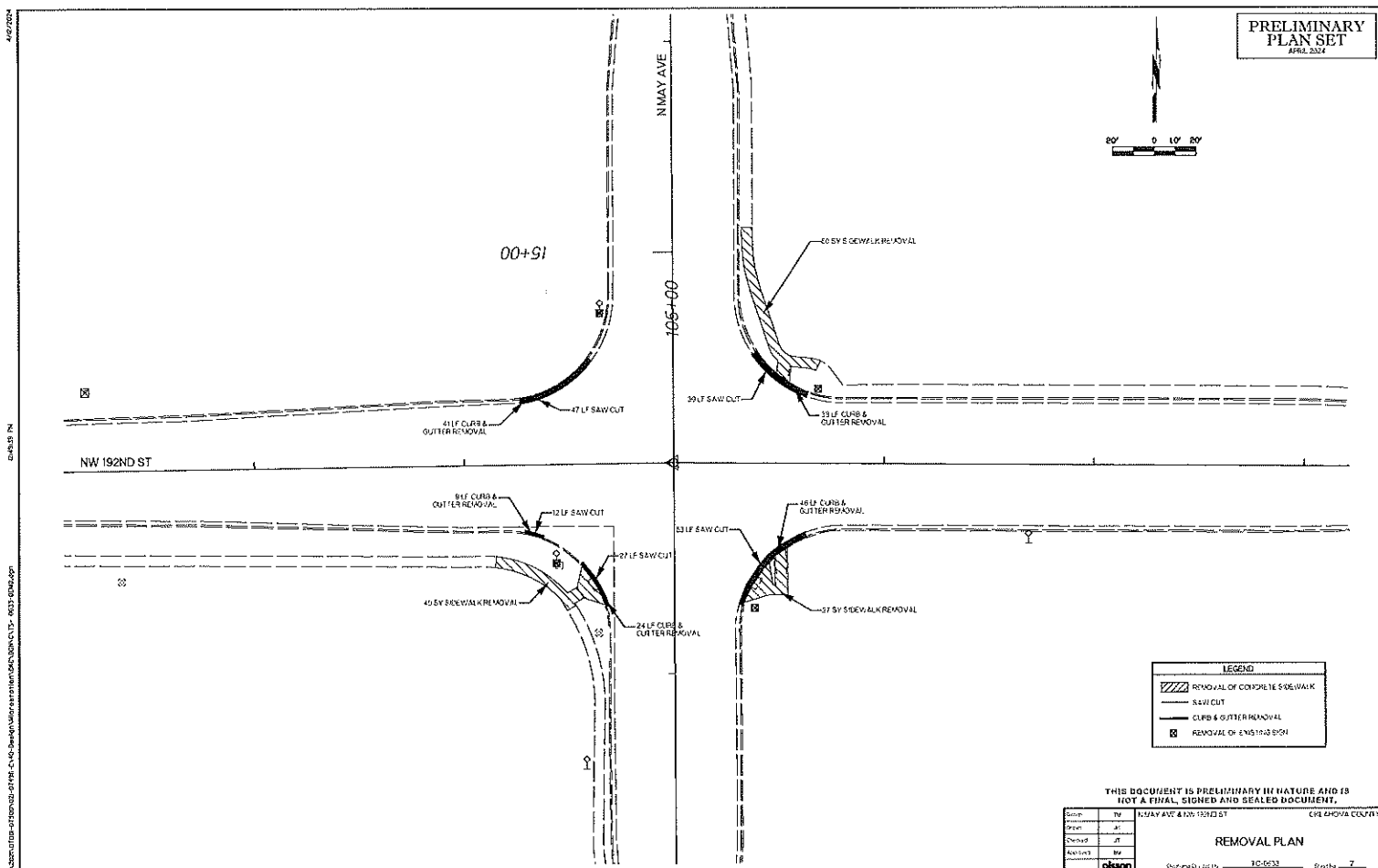
Drawn by: 201 IC-638 Sheet: 5

4/27/2024

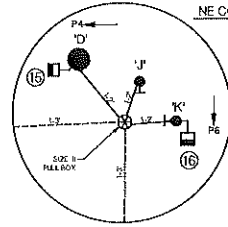
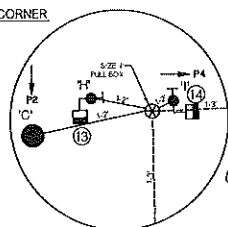
04/13/24

PLAN SET

NW QUADRANT			
POINT NO.	STATION	OFFSET	ALIGNMENT
150	14+56.76	31.09	LT HWY 152ND ST
151	15+21.23	33.02	LT HWY 152ND ST
152	16+33.4	33.13	LT HWY 152ND ST
153	17+45.19	33.13	LT HWY 152ND ST
154	18+57.19	33.13	LT HWY 152ND ST
155	19+69.19	33.13	LT HWY 152ND ST
156	20+81.19	33.13	LT HWY 152ND ST
157	21+93.19	33.13	LT HWY 152ND ST
158	22+05.19	33.13	LT HWY 152ND ST
159	23+17.19	33.13	LT HWY 152ND ST
160	24+29.19	33.13	LT HWY 152ND ST
161	25+41.19	33.13	LT HWY 152ND ST
162	26+53.19	33.13	LT HWY 152ND ST
163	27+65.19	33.13	LT HWY 152ND ST
164	28+77.19	33.13	LT HWY 152ND ST
165	29+89.19	33.13	LT HWY 152ND ST
166	30+01.19	33.13	LT HWY 152ND ST
167	31+13.19	33.13	LT HWY 152ND ST
168	32+25.19	33.13	LT HWY 152ND ST
169	33+37.19	33.13	LT HWY 152ND ST
170	34+49.19	33.13	LT HWY 152ND ST
171	35+61.19	33.13	LT HWY 152ND ST
172	36+73.19	33.13	LT HWY 152ND ST
173	37+85.19	33.13	LT HWY 152ND ST
174	38+97.19	33.13	LT HWY 152ND ST
175	39+09.19	33.13	LT HWY 152ND ST
176	40+21.19	33.13	LT HWY 152ND ST
177	41+33.19	33.13	LT HWY 152ND ST
178	42+45.19	33.13	LT HWY 152ND ST
179	43+57.19	33.13	LT HWY 152ND ST
180	44+69.19	33.13	LT HWY 152ND ST
181	45+81.19	33.13	LT HWY 152ND ST
182	46+93.19	33.13	LT HWY 152ND ST
183	48+05.19	33.13	LT HWY 152ND ST
184	49+17.19	33.13	LT HWY 152ND ST
185	50+29.19	33.13	LT HWY 152ND ST
186	51+41.19	33.13	LT HWY 152ND ST
187	52+53.19	33.13	LT HWY 152ND ST
188	53+65.19	33.13	LT HWY 152ND ST
189	54+77.19	33.13	LT HWY 152ND ST
190	55+89.19	33.13	LT HWY 152ND ST
191	57+01.19	33.13	LT HWY 152ND ST
192	58+13.19	33.13	LT HWY 152ND ST
193	59+25.19	33.13	LT HWY 152ND ST
194	60+37.19	33.13	LT HWY 152ND ST
195	61+49.19	33.13	LT HWY 152ND ST
196	62+61.19	33.13	LT HWY 152ND ST
197	63+73.19	33.13	LT HWY 152ND ST
198	64+85.19	33.13	LT HWY 152ND ST
199	65+97.19	33.13	LT HWY 152ND ST
200	67+09.19	33.13	LT HWY 152ND ST
201	68+21.19	33.13	LT HWY 152ND ST
202	69+33.19	33.13	LT HWY 152ND ST
203	70+45.19	33.13	LT HWY 152ND ST
204	71+57.19	33.13	LT HWY 152ND ST
205	72+69.19	33.13	LT HWY 152ND ST
206	73+81.19	33.13	LT HWY 152ND ST
207	74+93.19	33.13	LT HWY 152ND ST
208	76+05.19	33.13	LT HWY 152ND ST
209	77+17.19	33.13	LT HWY 152ND ST
210	78+29.19	33.13	LT HWY 152ND ST
211	79+41.19	33.13	LT HWY 152ND ST
212	80+53.19	33.13	LT HWY 152ND ST
213	81+65.19	33.13	LT HWY 152ND ST
214	82+77.19	33.13	LT HWY 152ND ST
215	83+89.19	33.13	LT HWY 152ND ST
216	85+01.19	33.13	LT HWY 152ND ST
217	86+13.19	33.13	LT HWY 152ND ST
218	87+25.19	33.13	LT HWY 152ND ST
219	88+37.19	33.13	LT HWY 152ND ST
220	89+49.19	33.13	LT HWY 152ND ST
221	90+61.19	33.13	LT HWY 152ND ST
222	91+73.19	33.13	LT HWY 152ND ST
223	92+85.19	33.13	LT HWY 152ND ST
224	93+97.19	33.13	LT HWY 152ND ST
225	95+09.19	33.13	LT HWY 152ND ST
226	96+21.19	33.13	LT HWY 152ND ST
227	97+33.19	33.13	LT HWY 152ND ST
228	98+45.19	33.13	LT HWY 152ND ST
229	99+57.19	33.13	LT HWY 152ND ST
230	100+69.19	33.13	LT HWY 152ND ST
231	101+81.19	33.13	LT HWY 152ND ST
232	102+93.19	33.13	LT HWY 152ND ST
233	104+05.19	33.13	LT HWY 152ND ST
234	105+17.19	33.13	LT HWY 152ND ST
235	106+29.19	33.13	LT HWY 152ND ST
236	107+41.19	33.13	LT HWY 152ND ST
237	108+53.19	33.13	LT HWY 152ND ST
238	109+65.19	33.13	LT HWY 152ND ST
239	110+77.19	33.13	LT HWY 152ND ST
240	111+89.19	33.13	LT HWY 152ND ST
241	113+01.19	33.13	LT HWY 152ND ST
242	114+13.19	33.13	LT HWY 152ND ST
243	115+25.19	33.13	LT HWY 152ND ST
244	116+37.19	33.13	LT HWY 152ND ST
245	117+49.19	33.13	LT HWY 152ND ST
246	118+61.19	33.13	LT HWY 152ND ST
247	119+73.19	33.13	LT HWY 152ND ST
248	120+85.19	33.13	LT HWY 152ND ST
249	121+97.19	33.13	LT HWY 152ND ST
250	123+09.19	33.13	LT HWY 152ND ST
251	124+21.19	33.13	LT HWY 152ND ST
252	125+33.19	33.13	LT HWY 152ND ST
253	126+45.19	33.13	LT HWY 152ND ST
254	127+57.19	33.13	LT HWY 152ND ST
255	128+69.19	33.13	LT HWY 152ND ST
256	129+81.19	33.13	LT HWY 152ND ST
257	130+93.19	33.13	LT HWY 152ND ST
258	132+05.19	33.13	LT HWY 152ND ST
259	133+17.19	33.13	LT HWY 152ND ST
260	134+29.19	33.13	LT HWY 152ND ST
261	135+41.19	33.13	LT HWY 152ND ST
262	136+53.19	33.13	LT HWY 152ND ST
263	137+65.19	33.13	LT HWY 152ND ST
264	138+77.19	33.13	LT HWY 152ND ST
265	139+89.19	33.13	LT HWY 152ND ST
266	141+01.19	33.13	LT HWY 152ND ST
267	142+13.19	33.13	LT HWY 152ND ST
268	143+25.19	33.13	LT HWY 152ND ST
269	144+37.19	33.13	LT HWY 152ND ST
270	145+49.19	33.13	LT HWY 152ND ST
271	146+61.19	33.13	LT HWY 152ND ST
272	147+73.19	33.13	LT HWY 152ND ST
273	148+85.19	33.13	LT HWY 152ND ST
274	149+97.19	33.13	LT HWY 152ND ST
275	151+09.19	33.13	LT HWY 152ND ST
276	152+21.19	33.13	LT HWY 152ND ST
277	153+33.19	33.13	LT HWY 152ND ST
278	154+45.19	33.13	LT HWY 152ND ST
279	155+57.19	33.13	LT HWY 152ND ST
280	156+69.19	33.13	LT HWY 152ND ST
281	157+81.19	33.13	LT HWY 152ND ST
282	158+93.19	33.13	LT HWY 152ND ST
283	160+05.19	33.13	LT HWY 152ND ST
284	161+17.19	33.13	LT HWY 152ND ST
285	162+29.19	33.13	LT HWY 152ND ST
286	163+41.19	33.13	LT HWY 152ND ST
287	164+53.19	33.13	LT HWY 152ND ST
288	165+65.19	33.13	LT HWY 152ND ST
289	166+77.19	33.13	LT HWY 152ND ST
290	167+89.19	33.13	LT HWY 152ND ST
291	169+01.19	33.13	LT HWY 152ND ST
292	170+13.19	33.13	LT HWY 152ND ST
293	171+25.19	33.13	LT HWY 152ND ST
294	172+37.19	33.13	LT HWY 152ND ST
295	173+49.19	33.13	LT HWY 152ND ST
296	174+61.19	33.13	LT HWY 152ND ST
297	175+73.19	33.13	LT HWY 152ND ST
298	176+85.19	33.13	LT HWY 152ND ST
299	177+97.19	33.13	LT HWY 152ND ST
300	179+09.19	33.13	LT HWY 152ND ST
301	180+21.19	33.13	LT HWY 152ND ST
302	181+33.19	33.13	LT HWY 152ND ST
303	182+45.19	33.13	LT HWY 152ND ST
304	183+57.19	33.13	LT HWY 152ND ST
305	184+69.19	33.13	LT HWY 152ND ST
306	185+81.19	33.13	LT HWY 152ND ST
307	186+93.19	33.13	LT HWY 152ND ST
308	188+05.19	33.13	LT HWY 152ND ST
309	189+17.19	33.13	LT HWY 152ND ST
310	190+29.19	33.13	LT HWY 152ND ST
311	191+41.19	33.13	LT HWY 152ND ST
312	192+53.19	33.13	LT HWY 152ND ST
313	193+65.19	33.13	LT HWY 152ND ST
314	194+77.19	33.13	LT HWY 152ND ST
315	195+89.19	33.13	LT HWY 152ND ST
316	197+01.19	33.13	LT HWY 152ND ST
317	198+13.19	33.13	LT HWY 152ND ST
318	199+25.19	33.13	LT HWY 152ND ST
319	200+37.19	33.13	LT HWY 152ND ST
320	201+49.19	33.13	LT HWY 152ND ST
321	202+61.19	33.13	LT HWY 152ND ST
322	203+73.19	33.13	LT HWY 152ND ST
323	204+85.19	33.13	LT HWY 152ND ST
324	205+97.19	33.13	LT HWY 152ND ST
325	207+09.19	33.13	LT HWY 152ND ST
326	208+21.19	33.13	LT HWY 152ND ST
327	209+33.19	33.13	LT HWY 152ND ST
328	210+45.19	33.13	LT HWY 152ND ST
329	211+57.19	33.13	LT HWY 152ND ST
330	212+69.19	33.13	LT HWY 152ND ST
331	213+81.19	33.13	LT HWY 152ND ST
332	214+93.19	33.13	LT HWY 152ND ST
333	216+05.19	33.13	LT HWY 152ND ST
334	217+17.19	33.13	LT HWY 152ND ST
335	218+29.19	33.13	LT HWY 152ND ST
336	219+41.19	33.13	LT HWY 152ND ST
337	220+53.19	33.13	LT HWY 152ND ST
338	221+65.19	33.13	LT HWY 152ND ST
339	222+77.19	33.13	LT HWY 152ND ST
340	223+89.19	33.13	LT HWY 152ND ST
341	225+01.19	33.13	LT HWY 152ND ST
342	226+13.19	33.13	LT HWY 152ND ST
343	227+25.19	33.13	LT HWY 152ND ST
344	228+37.19	33.13	LT HWY 152ND ST
345	229+49.19	33.13	LT HWY 152ND ST
346	230+61.19	33.13	LT HWY 152ND ST
347	231+73.19	33.13	LT HWY 152ND ST
348	232+85.19	33.13	LT HWY 152ND ST
349	233+97.19	33.13	LT HWY 152ND ST
350	235+09.19	33.13	LT HWY 152ND ST
351	236+21.19	33.13	LT HWY 152ND ST
352	237+33.19	33.13	LT HWY 152ND ST
353	238+45.19	33.13	LT HWY 152ND ST
354	239+57.19	33.13	LT HWY 152ND ST
355	240+69.19	33.13	LT HWY 152ND ST
356	241+81.19	33.13	LT HWY 152ND ST
357	242+93.19	33.13	LT HWY 152ND ST
358	244+05.19	33.13	LT HWY 152ND ST
359	245+17.19	33.13	LT HWY 152ND ST
360	246+29.19	33.13	LT HWY 152ND ST
361	247+41.19	33.13	LT HWY 152ND ST
362	248+53.19	33.13	LT HWY 152ND ST
363	249+65.19	33.13	LT HWY 152ND ST
364	250+77.19	33.13	LT HWY 152ND ST
365	251+89.19	33.13	LT HWY 152ND ST
366	253+01.19	33.13	LT HWY 152ND ST
367	254+13.19	33.13	LT HWY 152ND ST
368	255+25.19	33.13	LT HWY 152ND ST
369	256+37.19	33.13	LT HWY 152ND ST
370	257+49.19	33.13	LT HWY 152ND ST
371	258+61.19	33.13	LT HWY 152ND ST
372	259+73.19	33.13	LT HWY 152ND ST
373	260+85.19	33.13	LT HWY 152ND ST
374	261+97.19	33.13	LT HWY 152ND ST
375	263+09.19	33.13	LT HWY 152ND ST
376	264+21.19	33.13	LT HWY 152ND ST
377	265+33.19	33.13	LT HWY 152ND ST
378	266+45.19	33.13	LT HWY 152ND ST
379	267+57.19	33.13	LT HWY 152ND ST
380	268+69.19	33.13	LT HWY 152ND ST
381	269+81.19	33.13	LT HWY 152ND ST
382	270+93.19	33.13	LT HWY 152ND ST
383	272+05.19	33.13	LT HWY 152ND ST
384	273+17.19	33.13	LT HWY 152ND ST
385	274+29.19	33.13	LT HWY 152ND ST
386	275+41.19	33.13	LT HWY 152ND ST
387	276+53.19	33.13	LT HWY 152ND ST
388	277+65.19	33.13	LT HWY 152ND ST
389	278+77.19	33.13	LT HWY 152ND ST
390	279+89.19	33.13	LT HWY 152ND ST
391	281+01.19	33.13	LT HWY 152ND ST
392	282+13.19	33.13	LT HWY 152ND ST
393	283+25.19	33.13	LT HWY 152ND ST
394	284+37.19	33.13	LT HWY 152ND ST



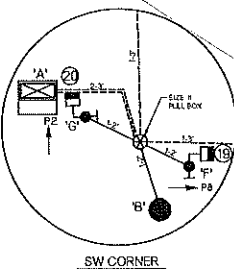
NW CORNER



PRELIMINARY
PLAN SET
APRIL 2024

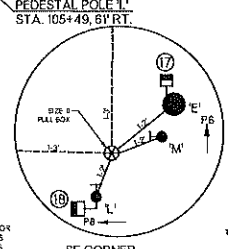


00+801

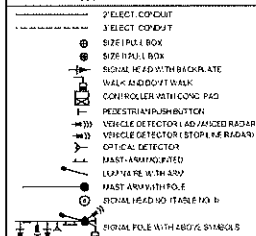
TABLE #1 SIGNAL HEADSTABLE #2 MAST ARMS AND POLES

THE CONTRACTOR SHALL CONTACT THE CITY AND THE UTILITY COMPANIES FOR POSSIBLE EXISTING UNDERGROUND UTILITIES NOT SHOWN ON THE PLANS. THIS SHOULD BE DONE BEFORE TRENCHING OR PUSHING THE ELECTRICAL CONDUITS.

ALL EXISTING CONDUIT AND CABLE SHALL BE REPLACED OR ABANDONED PROPERLY BY THE CONTRACTOR. IF IN SAFE CONDITION EXISTING CONDUIT MAY BE USED TO PULL ELECTRICAL CABLE FOR NEW SIGNAL EQUIPMENT IF APPROVED BY THE ENGINEER.




SIGNAL LEGEND

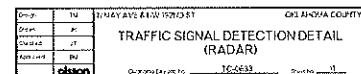


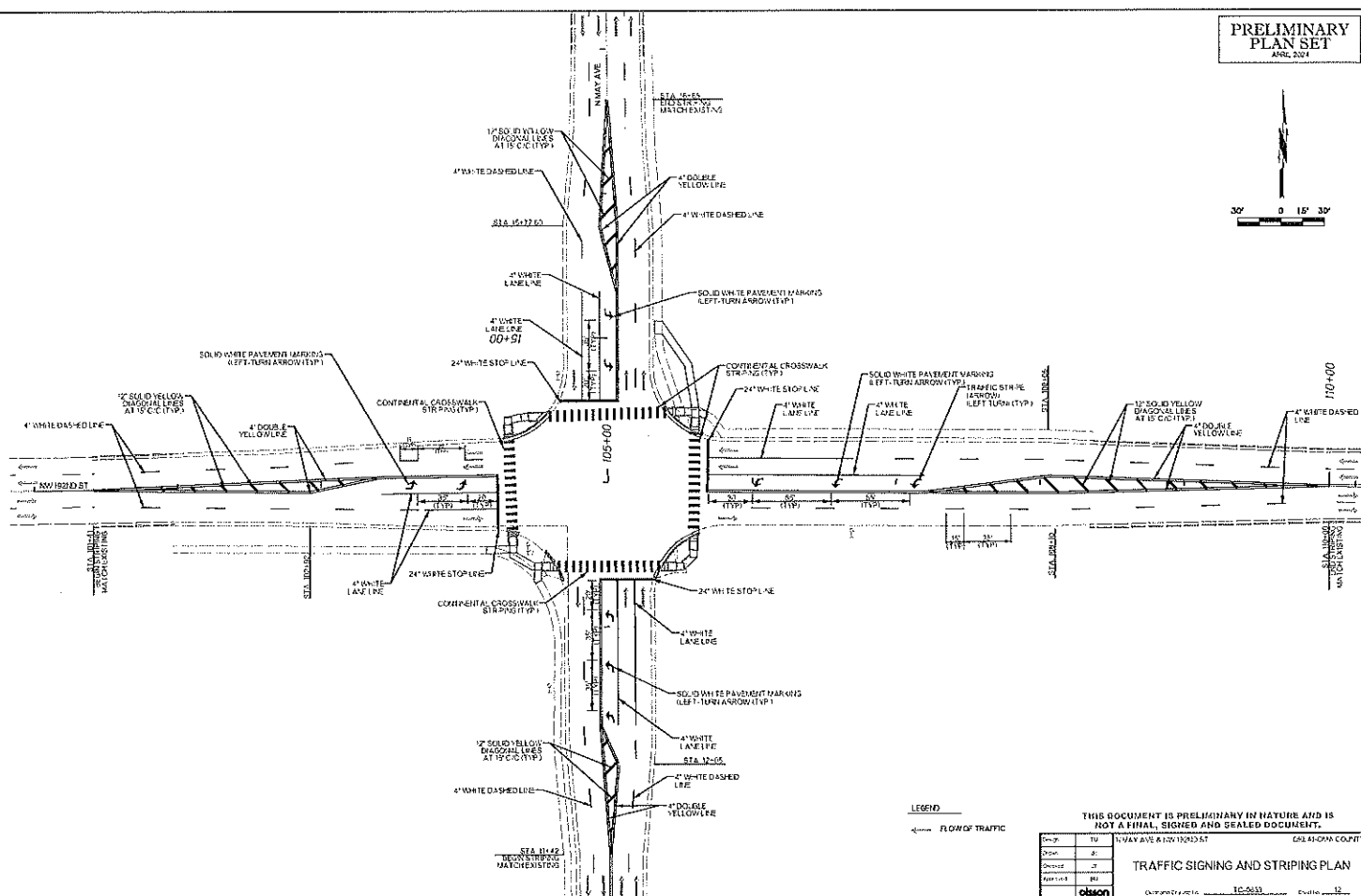
THIS DOCUMENT IS PRELIMINARY IN NATURE AND IS NOT A FINAL, SIGNED AND SEALED DOCUMENT.

TRAFFIC SIGNAL PLAN

Case:	73	JIMMY AVE & HWY 1923 ST	OKLAHOMA COUNTY
Plan:	#1		
Sheet:	17	TRAFFIC SIGNAL PLAN	
As of:	7/91		
			

Project	TU	81 MAY AVE & NW 19TH ST	CRK 4TH AVA CDRFT
Drawn	dl		
Checked	dl	TRAFFIC SIGNAL SEQUENCING	
Approved	dl		
Notes	dl		
Revision	dl		





THIS DOCUMENT IS PRELIMINARY IN NATURE AND IS NOT A FINAL, SIGNED AND SEALED DOCUMENT.

TV	11/14/81 AVE & NEW 11/20/81 ST	681 41-0000 COURT
----	--------------------------------	-------------------

10	11/12/13/14/15/16/17/18/19/20/21/22/23/24/25/26/27/28/29/30/31	12/13/14/15/16/17/18/19/20/21/22/23/24/25/26/27/28/29/30/31
21	11/12/13/14/15/16/17/18/19/20/21/22/23/24/25/26/27/28/29/30/31	12/13/14/15/16/17/18/19/20/21/22/23/24/25/26/27/28/29/30/31

TRAFFIC SIGNING AND STRIPING PLAN

10	11	12	13	14	15	16	17	18	19	20	21	22	23	24	25	26	27	28	29	30	31	32	33	34	35	36	37	38	39	40	41	42	43	44	45	46	47	48	49	50	51	52	53	54	55	56	57	58	59	60	61	62	63	64	65	66	67	68	69	70	71	72	73	74	75	76	77	78	79	80	81	82	83	84	85	86	87	88	89	90	91	92	93	94	95	96	97	98	99	100	101	102	103	104	105	106	107	108	109	110	111	112	113	114	115	116	117	118	119	120	121	122	123	124	125	126	127	128	129	130	131	132	133	134	135	136	137	138	139	140	141	142	143	144	145	146	147	148	149	150	151	152	153	154	155	156	157	158	159	160	161	162	163	164	165	166	167	168	169	170	171	172	173	174	175	176	177	178	179	180	181	182	183	184	185	186	187	188	189	190	191	192	193	194	195	196	197	198	199	200	201	202	203	204	205	206	207	208	209	210	211	212	213	214	215	216	217	218	219	220	221	222	223	224	225	226	227	228	229	230	231	232	233	234	235	236	237	238	239	240	241	242	243	244	245	246	247	248	249	250	251	252	253	254	255	256	257	258	259	260	261	262	263	264	265	266	267	268	269	270	271	272	273	274	275	276	277	278	279	280	281	282	283	284	285	286	287	288	289	290	291	292	293	294	295	296	297	298	299	300	301	302	303	304	305	306	307	308	309	310	311	312	313	314	315	316	317	318	319	320	321	322	323	324	325	326	327	328	329	330	331	332	333	334	335	336	337	338	339	340	341	342	343	344	345	346	347	348	349	350	351	352	353	354	355	356	357	358	359	360	361	362	363	364	365	366	367	368	369	370	371	372	373	374	375	376	377	378	379	380	381	382	383	384	385	386	387	388	389	390	391	392	393	394	395	396	397	398	399	400	401	402	403	404	405	406	407	408	409	410	411	412	413	414	415	416	417	418	419	420	421	422	423	424	425	426	427	428	429	430	431	432	433	434	435	436	437	438	439	440	441	442	443	444	445	446	447	448	449	450	451	452	453	454	455	456	457	458	459	460	461	462	463	464	465	466	467	468	469	470	471	472	473
----	----	----	----	----	----	----	----	----	----	----	----	----	----	----	----	----	----	----	----	----	----	----	----	----	----	----	----	----	----	----	----	----	----	----	----	----	----	----	----	----	----	----	----	----	----	----	----	----	----	----	----	----	----	----	----	----	----	----	----	----	----	----	----	----	----	----	----	----	----	----	----	----	----	----	----	----	----	----	----	----	----	----	----	----	----	----	----	----	----	-----	-----	-----	-----	-----	-----	-----	-----	-----	-----	-----	-----	-----	-----	-----	-----	-----	-----	-----	-----	-----	-----	-----	-----	-----	-----	-----	-----	-----	-----	-----	-----	-----	-----	-----	-----	-----	-----	-----	-----	-----	-----	-----	-----	-----	-----	-----	-----	-----	-----	-----	-----	-----	-----	-----	-----	-----	-----	-----	-----	-----	-----	-----	-----	-----	-----	-----	-----	-----	-----	-----	-----	-----	-----	-----	-----	-----	-----	-----	-----	-----	-----	-----	-----	-----	-----	-----	-----	-----	-----	-----	-----	-----	-----	-----	-----	-----	-----	-----	-----	-----	-----	-----	-----	-----	-----	-----	-----	-----	-----	-----	-----	-----	-----	-----	-----	-----	-----	-----	-----	-----	-----	-----	-----	-----	-----	-----	-----	-----	-----	-----	-----	-----	-----	-----	-----	-----	-----	-----	-----	-----	-----	-----	-----	-----	-----	-----	-----	-----	-----	-----	-----	-----	-----	-----	-----	-----	-----	-----	-----	-----	-----	-----	-----	-----	-----	-----	-----	-----	-----	-----	-----	-----	-----	-----	-----	-----	-----	-----	-----	-----	-----	-----	-----	-----	-----	-----	-----	-----	-----	-----	-----	-----	-----	-----	-----	-----	-----	-----	-----	-----	-----	-----	-----	-----	-----	-----	-----	-----	-----	-----	-----	-----	-----	-----	-----	-----	-----	-----	-----	-----	-----	-----	-----	-----	-----	-----	-----	-----	-----	-----	-----	-----	-----	-----	-----	-----	-----	-----	-----	-----	-----	-----	-----	-----	-----	-----	-----	-----	-----	-----	-----	-----	-----	-----	-----	-----	-----	-----	-----	-----	-----	-----	-----	-----	-----	-----	-----	-----	-----	-----	-----	-----	-----	-----	-----	-----	-----	-----	-----	-----	-----	-----	-----	-----	-----	-----	-----	-----	-----	-----	-----	-----	-----	-----	-----	-----	-----	-----	-----	-----	-----	-----	-----	-----	-----	-----	-----	-----	-----	-----	-----	-----	-----	-----	-----	-----	-----	-----	-----	-----	-----	-----	-----	-----	-----	-----	-----	-----	-----	-----	-----	-----	-----	-----	-----	-----	-----	-----	-----	-----	-----	-----	-----	-----	-----	-----	-----	-----	-----	-----	-----	-----	-----	-----	-----	-----	-----	-----	-----	-----	-----	-----	-----	-----	-----	-----	-----	-----	-----	-----	-----	-----	-----

obson Original Transcription IC-6859 Serial 12

Group	TM	10451 AVE E UNIT 1020 ST	GRANDHIA COUNTY
State	RI		
City	ST		
Address	RD	SURVEY DATA SHEET	
Parcel	000000	10-0533	Sheet 5331

PRELIMINARY ENGINEERING REPORT

The City of Oklahoma City

April 2024

Project No. TC-0633, Task 1



The City of
OKLAHOMA CITY

olsson