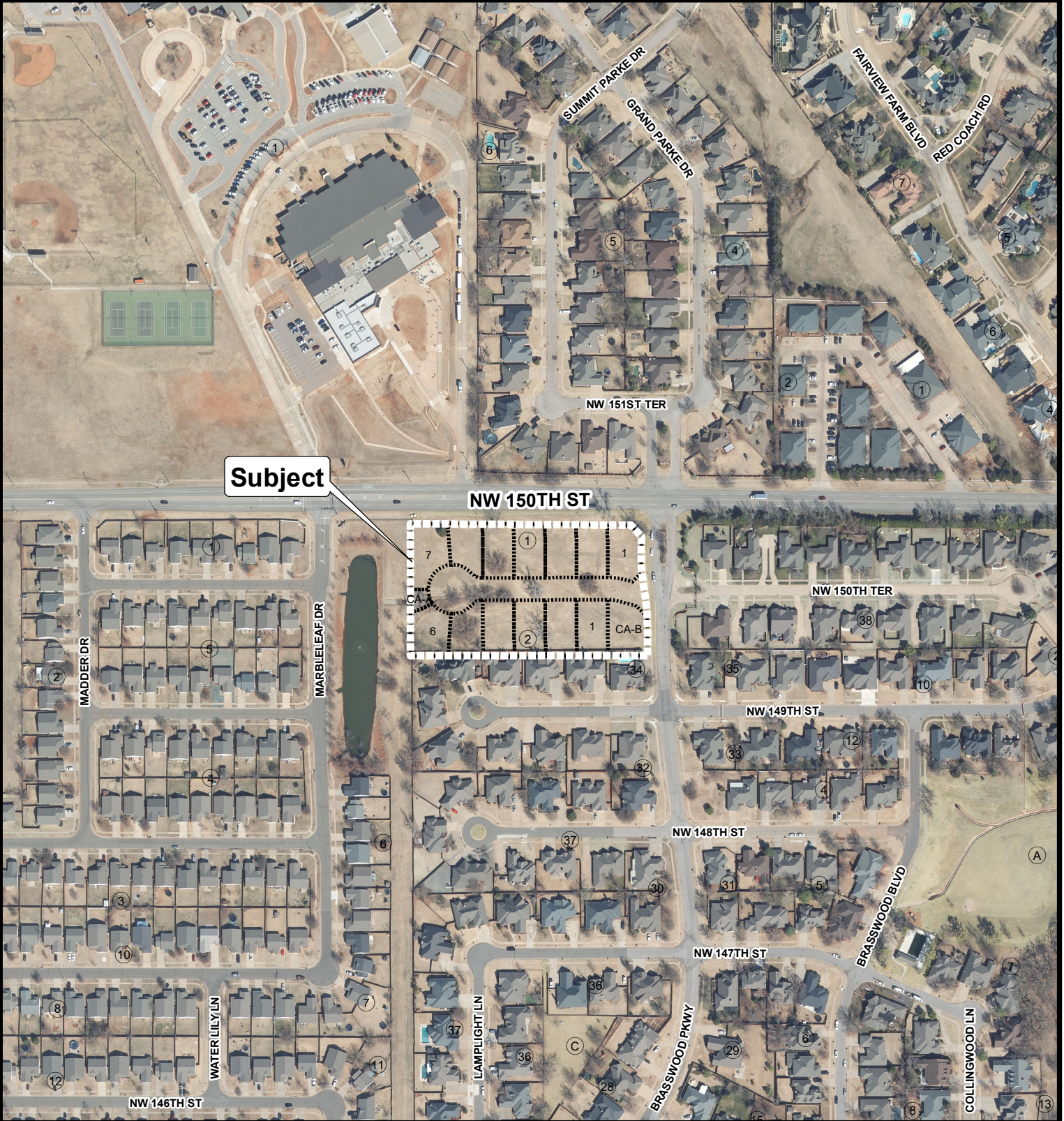


Case No: C-7739

Final Plat of Amelia's Brasswood

Developer: Brasswood Construction, LLC

Engineer: Grey Massey, Red Plains Engineering



Aerial Photo from 2/2022

Note: "Subject" is located approximately 2,487' East of N. Pennsylvania Ave.



The City of
OKLAHOMA CITY

Final Plat Application

