

MAPS 4

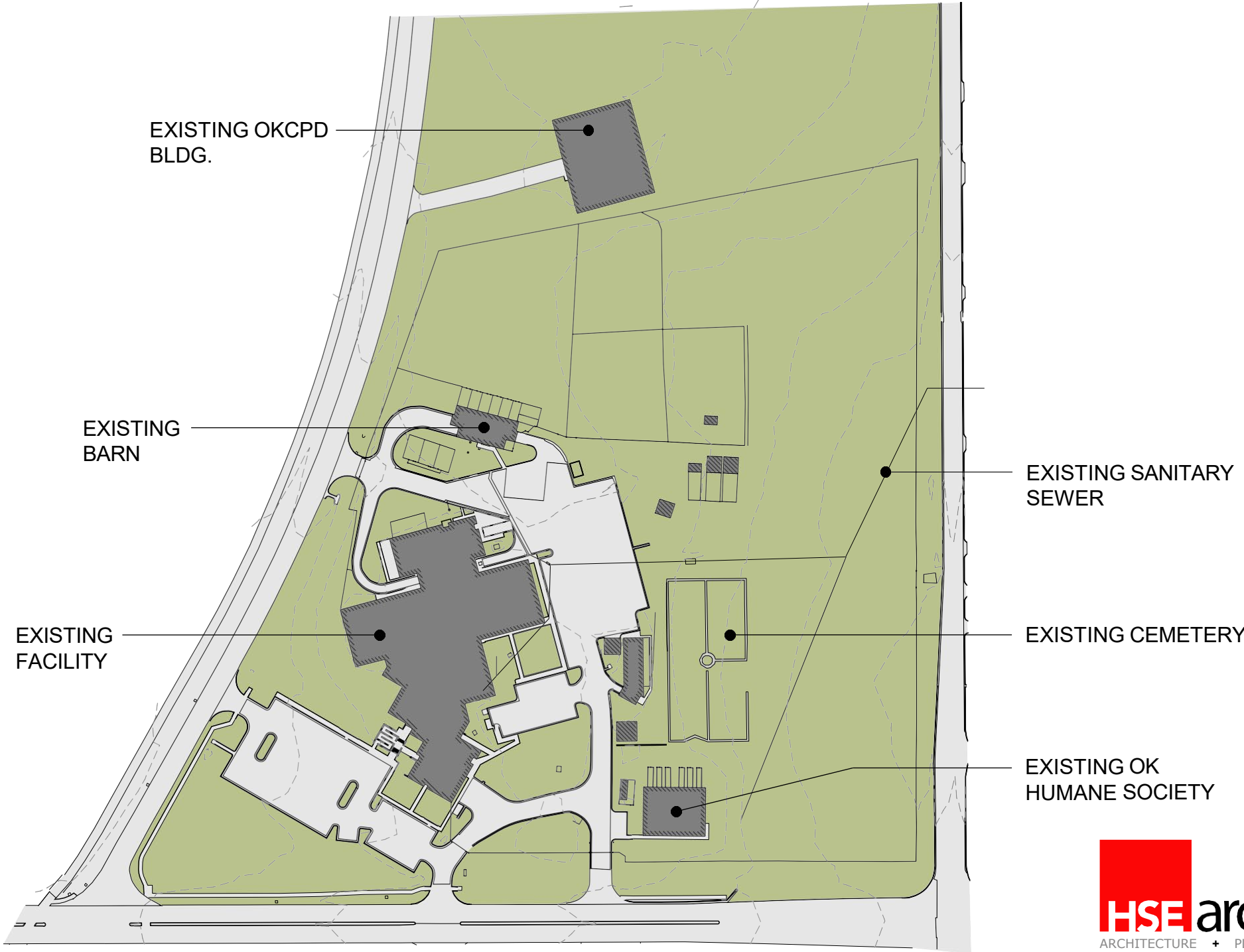
**Project M4-NA010
MAPS 4 ANIMAL SHELTER**

**HSEarchitects
Final Plans & Specifications**

November 2024

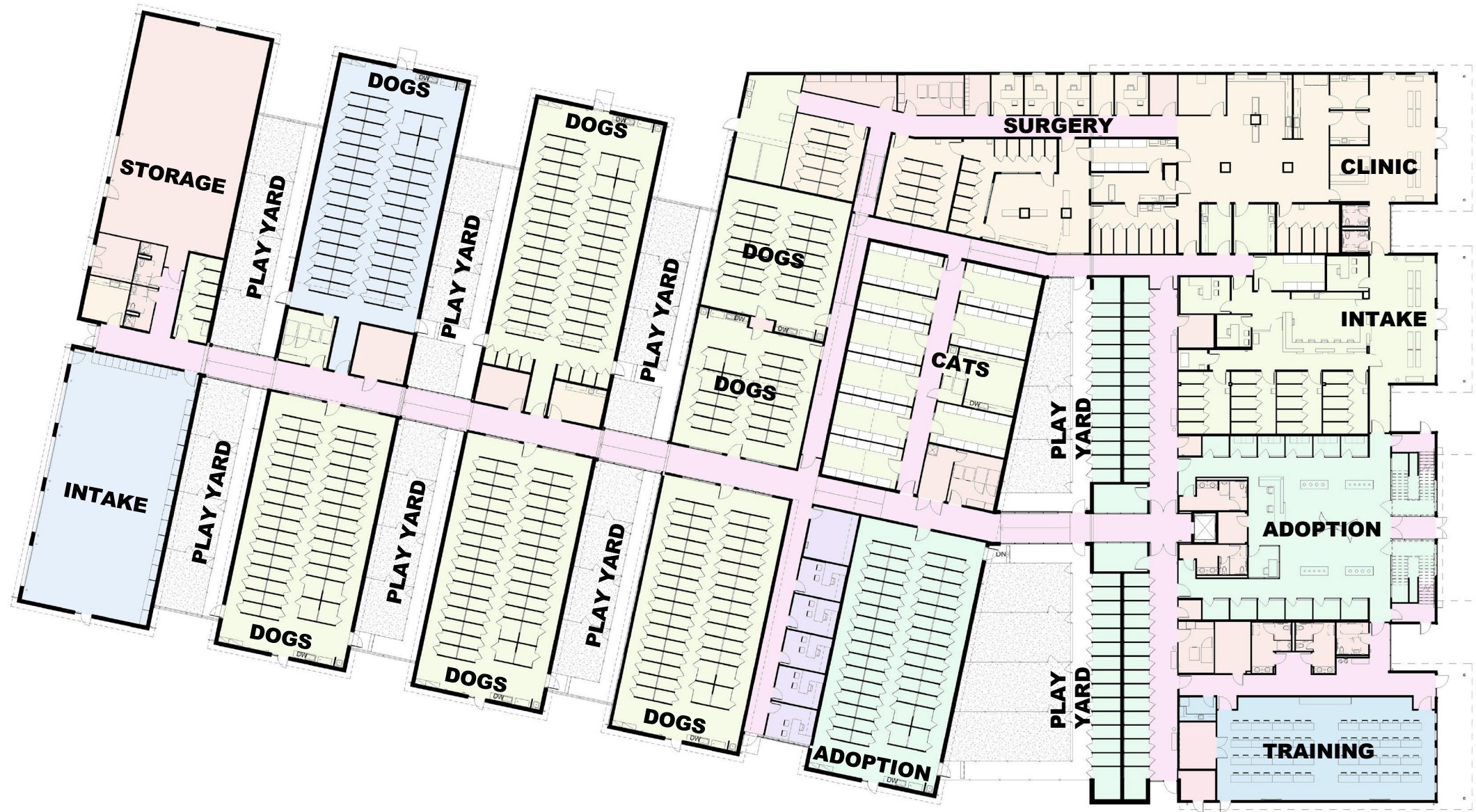


EXISTING SITE PLAN



PROPOSED SITE PLAN





FIRST FLOOR PLAN

GROSS AREA:

EXISTING:
 FIRST FLOOR: 43,097 SF
 BARN: 2,695 SF
 TOTAL: 45,792 SF

NEW:
 FIRST FLOOR: 60,080 SF
 SECOND FLOOR: 9,522 SF
 BARN: 2,774 SF
 TOTAL: 72,376 SF

DOG KENNELS:

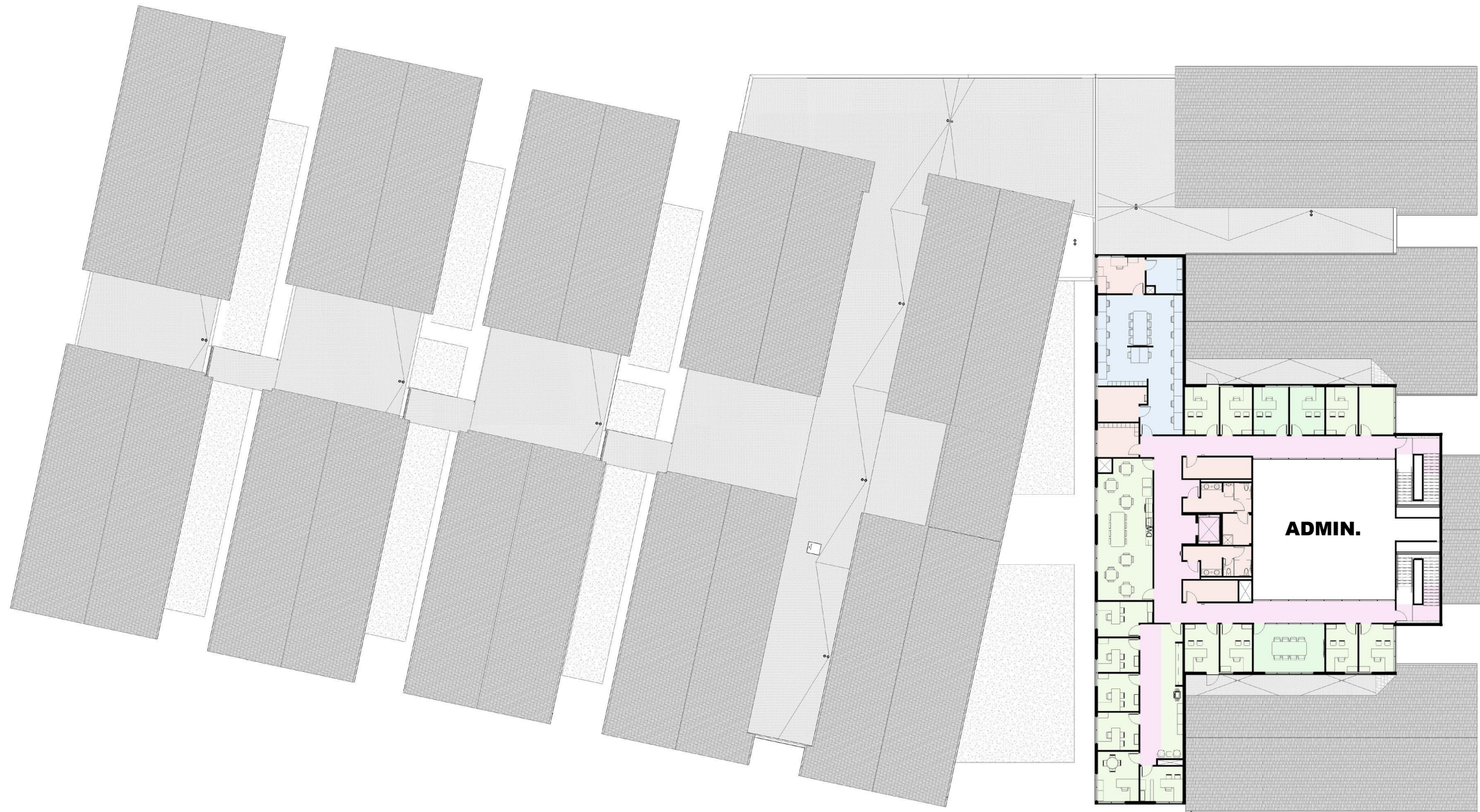
EXISTING (± 18 SF): 246 (4,428 SF TOTAL)
 NEW: (22 SF): 546 (12,012 SF TOTAL)

CAT CONDOS:

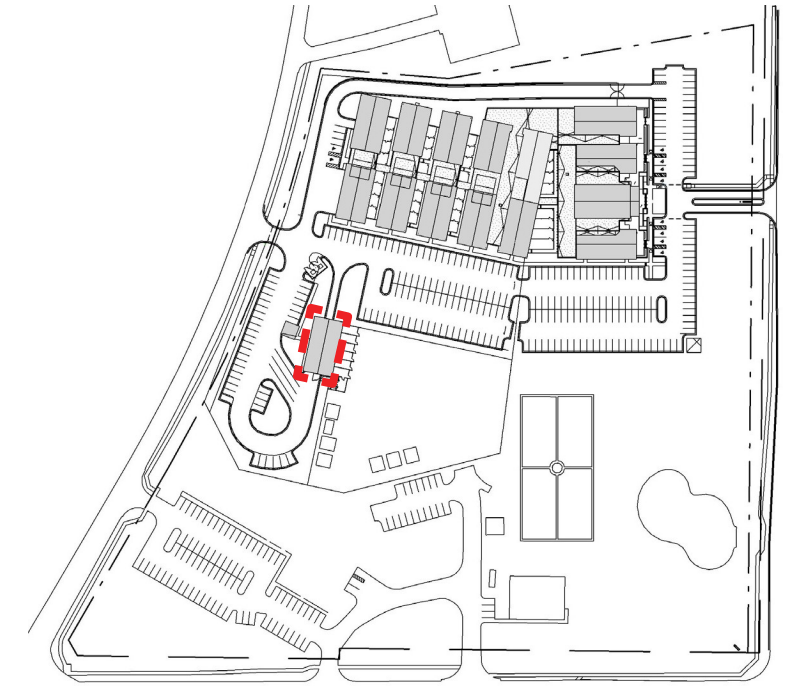
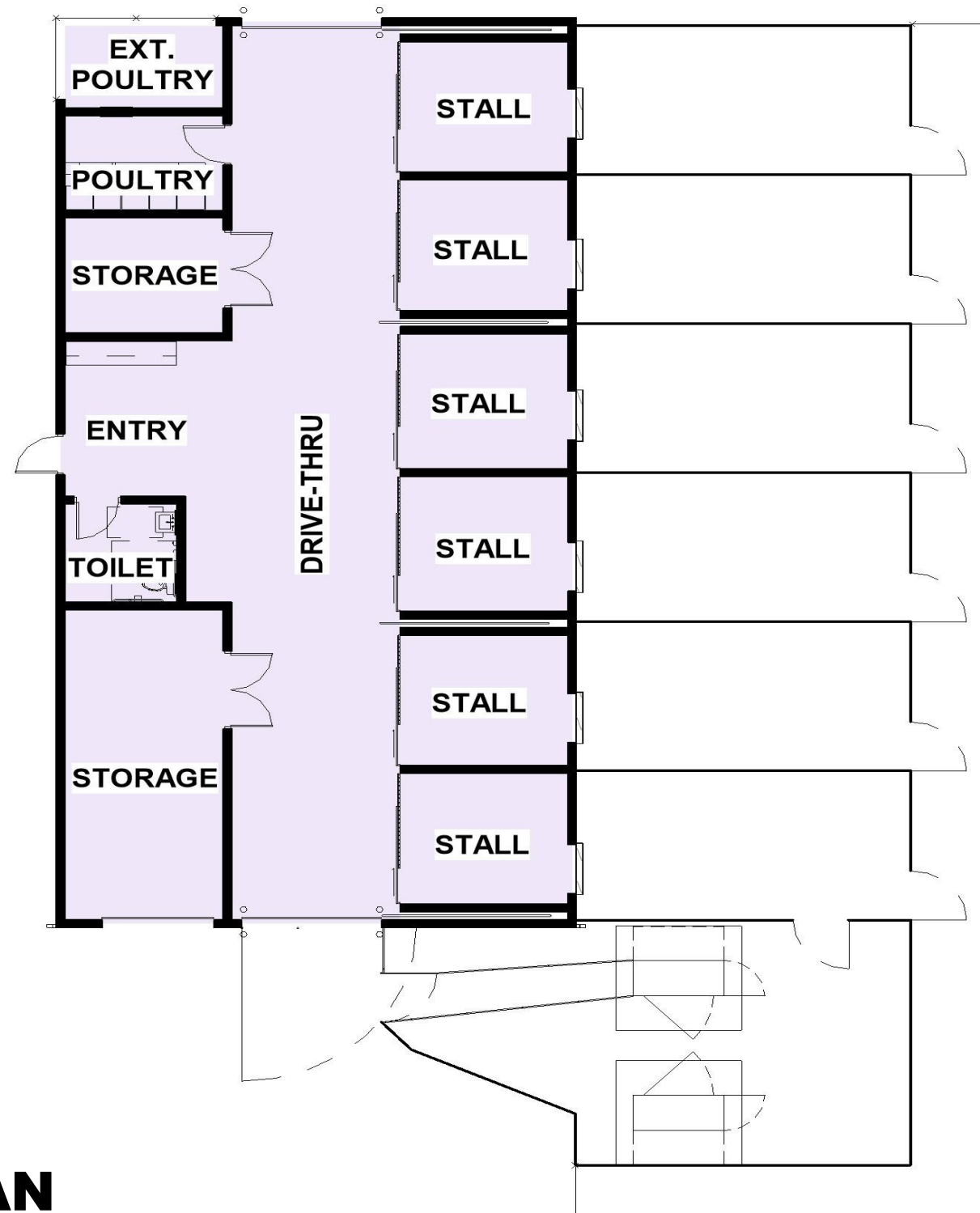
EXISTING (5 SF*): 210 (1,050 SF TOTAL)
 NEW (6.5 SF*): 317 (2,060 SF TOTAL)
 *NOT INCLUDING LITTER SPACE

Department Legend

- ADOPTION
- BUILDING SUPPORT
- CIRCULATION
- CLINIC
- INTAKE
- MEETING
- STORAGE
- VOLUNTEER COORDINATORS



SECOND FLOOR PLAN



BARN FLOOR PLAN



TRAINING

ADOPTION

INTAKE

CLINIC

APPROACH FROM BRYANT



APPROACH AT DUSK



ADOPTION

TRAINING

ADOPTION ENTRY



ADOPTION LOBBY LOOKING TOWARD RECEPTION



INTAKE LOBBY



TREATMENT AREA

DOG KENNELS



CAT HABITATS

HSE architects
ARCHITECTURE + PLANNING

PROJECT BUDGET

FINAL PROJECT ESTIMATE:	
DIV. 1 - GENERAL CONDITIONS	\$1,143,270
DIV. 2 - DEMOLITION	\$432,214
DIV. 3 - CAST-IN-PLACE CONCRETE	\$1,573,669
DIV. 4 - MASONRY	\$3,097,301
DIV. 5 - STEEL	\$1,749,945
DIV. 6 - ROUGH CARPENTRY	\$975,784
DIV. 6 - FINISH CARPENTRY	\$288,541
DIV. 7 - MOISTURE PROTECTION	\$1,642,490
DIV. 8 - DOORS	\$532,870
DIV. 8 - HARDWARE	\$210,892
DIV. 8 - GLASS & GLAZING	\$786,146
DIV. 9 - FINISHES: DRYWALL & PLASTER	\$635,583
DIV. 9 - FINISHES: ACOUSTICAL	\$925,537
DIV. 9 - FINISHES: FLOORING	\$767,199
DIV. 9 - FINISHES: PAINTING	\$226,447
DIV. 10 - SPECIALTIES	\$146,659
DIV. 11 - EQUIPMENT	\$756,087
DIV. 12 - FURNISHINGS	\$403,013
DIV. 13 - SPECIAL CONSTRUCTION	\$1,425,152
DIV. 14 - CONVEYING SYSTEMS	\$112,500
DIV. 21 - FIRE SUPPRESSION	\$289,076
DIV. 22 - PLUMBING	\$1,402,457
DIV. 23 - HEATING, VENTILATING & A.C.	\$3,395,194
DIV. 26 - ELECTRICAL	\$2,714,908
DIV. 27 - COMMUNICATIONS	\$158,580
DIV. 28 - ELECTRONIC SAFETY & SECURITY	\$318,243
DIV. 31 - EARTHWORK	\$1,122,935
DIV. 32 - EXTERIOR IMPROVEMENTS	\$1,574,991
DIV. 33 - UTILITIES	\$446,562
GRAND TOTAL	\$31,773,062
COST PER SQ. FT.	\$438.99

PROJECT BUDGET:			
TOTAL CONSTRUCTION BUDGET	\$31,967,800	COST PER SQUARE FOOT	\$450.72 SF
TOTAL CONSTRUCTION ESTIMATE	\$31,773,062		
BUDGET VARIANCE	- \$194,738		

FLOOR AREA:	
FIRST FLOOR (NET)	56,155 SF
SECOND FLOOR (NET)	6,719 SF
BARN (NET)	2,628 SF
TOTAL FLOOR AREA (NET):	62,874 SF
TOTAL GROSS AREA:	72,376 SF

PROJECT SCHEDULE

