

# M4-TS021 MAPS 4 Sidewalks and Related Amenities Phase 2B

## Preliminary Engineering Report Presentation

December 2024

MAPS4

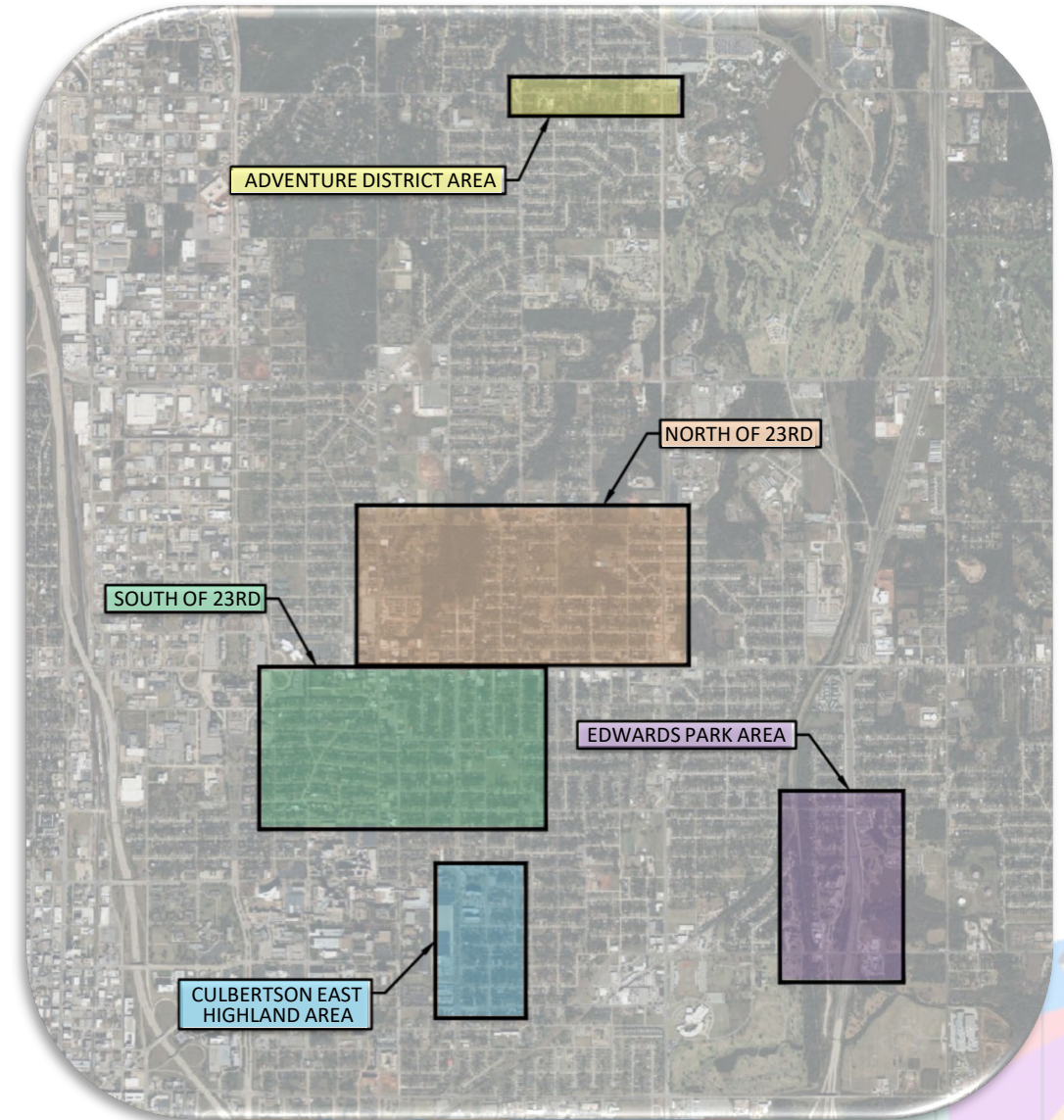


MAPS4



# Project Overview

- 5 Areas Identified in BikeWalkOKC Master Plan for M4-TS021 MAPS 4 Sidewalks and Related Amenities Phase 2B
  - Adventure District Area (NE 50<sup>th</sup> St and MLK Ave)
  - Edwards Park Area (NE Grand Blvd and NE 10<sup>th</sup> St)
  - North of 23<sup>rd</sup> Street (NE 23<sup>rd</sup> St and MLK Ave)
  - Culbertson East Highland Area (NE 13<sup>th</sup> St and Lottie Ave)
  - South of 23<sup>rd</sup> Street (NE 23<sup>rd</sup> St and N Lindsay Ave)
- Project Goals
  - Create Walkable Community
  - Connect People to Places
  - Improve Pedestrian Safety
- Phase 2B budget: \$3,939,400





# Adventure District Area

- NE 50<sup>th</sup> St from Prospect Ave to N Martin Luther King Ave
- North Side of Lincoln Park
- Pedestrian Connections:
  - Senior Assistant Living
  - Commercial Areas
  - Oklahoma City Zoo and Science Museum of Oklahoma
  - Lincoln Park





# Edwards Park Area

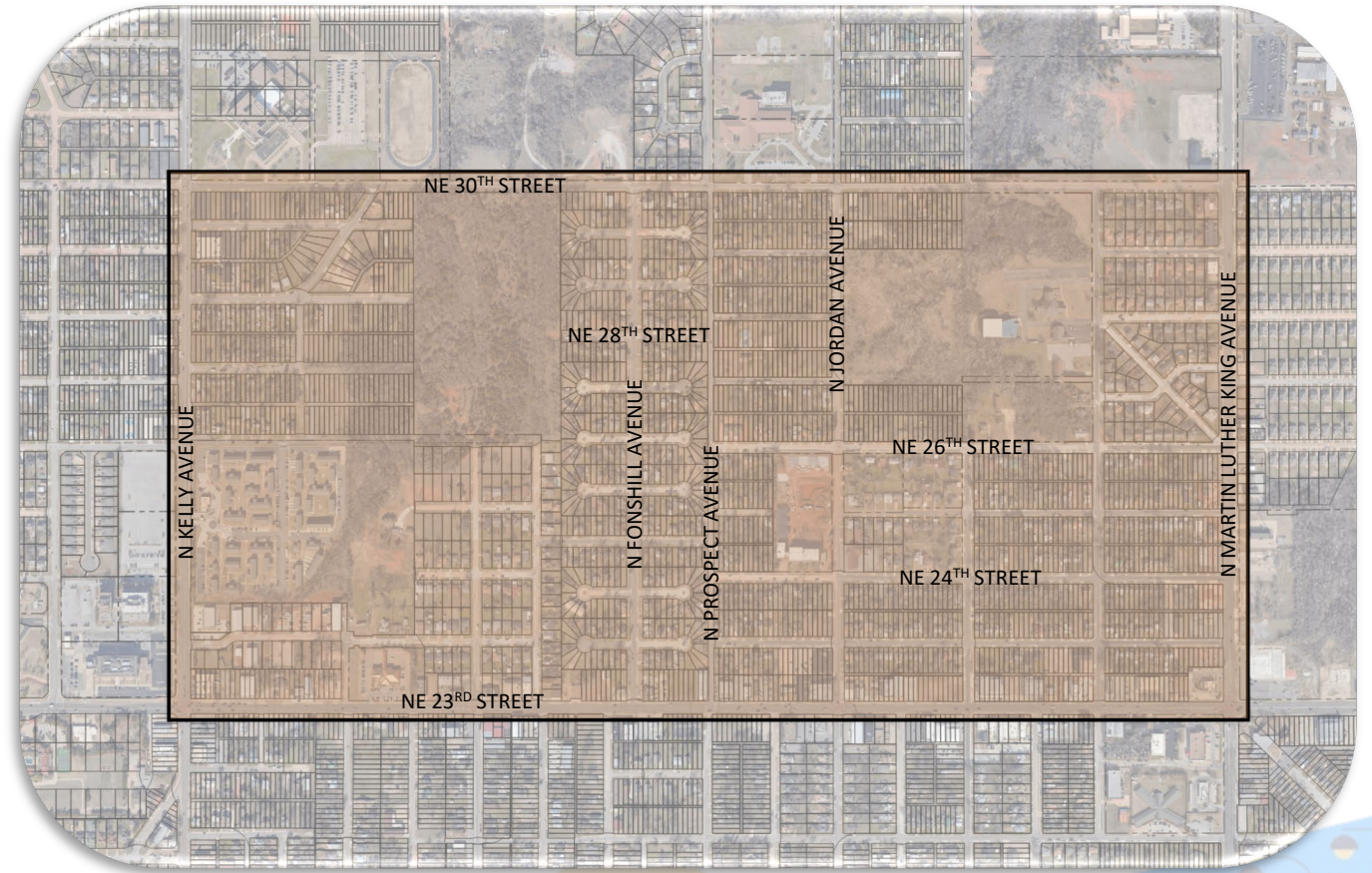
- NE Grand Blvd between NE 16<sup>th</sup> St and NE 10<sup>th</sup> St
  - East Side of NE Grand Blvd
  - North Side of NE 10<sup>th</sup> St
- Pedestrian Connections:
  - Senior Assistant Living Center
  - Commercial areas
  - Edwards Early Education and Community Hope Center
  - Edwards Park
  - Katy Trail





# North of 23<sup>rd</sup> Street

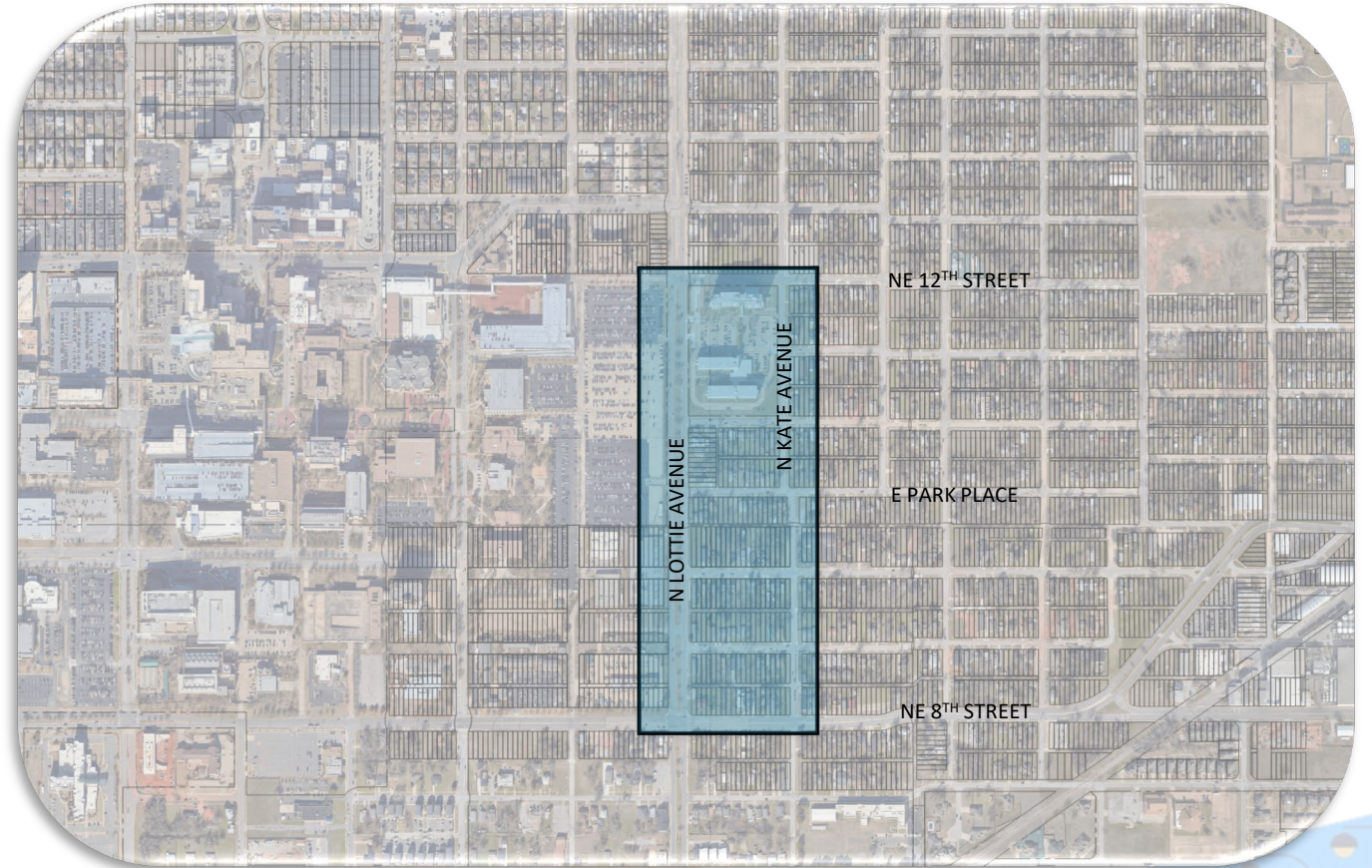
- Streets Include:
  - NE 30<sup>th</sup> St
  - N Kelly Ave
  - N Lottie Ave
  - N Fonshill Ave
  - NE 25<sup>th</sup> St
  - NE 28<sup>th</sup> St
  - N Prospect Ave
  - NE 27<sup>th</sup> St
  - NE 24<sup>th</sup> St
  - N Jordan Ave
- Pedestrian Connections:
  - Classen SAS High School at Northeast
  - Thelma R. Parks Elementary School
  - Phillips Park
  - Commercial Areas on NE 23<sup>rd</sup> St
  - Embark Bus Stops on N Kelly Ave, MLK Ave, and NE 23<sup>rd</sup> St





# Culbertson East Highland Area

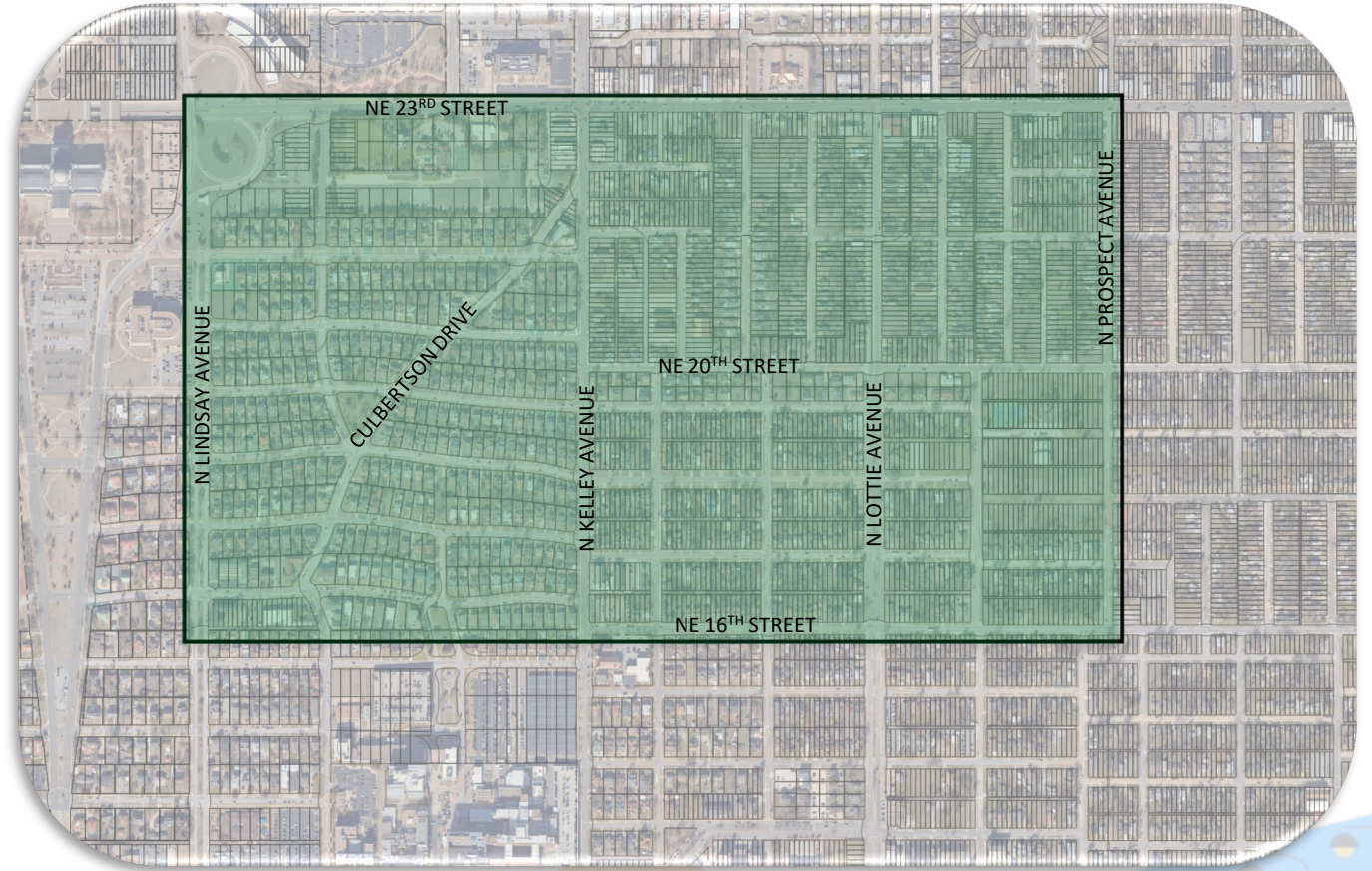
- Streets Include:
  - N Lottie Ave
  - NE 12<sup>th</sup> St
  - N Kate Ave
- Pedestrian Connections:
  - OU Health
  - Senior living





# South of 23<sup>rd</sup> Street

- Streets Include:
  - N Lindsay Ave
  - N Kelly Ave
  - N Lottie Ave
  - N Prospect Ave
  - NE 16<sup>th</sup> St
  - NE 20<sup>th</sup> St
- Pedestrian Connections:
  - OU Health
  - State Government Buildings
  - Riley Leroy Pitts Park





# Typical Design Challenges

- Utility Conflicts
- Existing Right-of-Way
- ADA Compliance Challenges



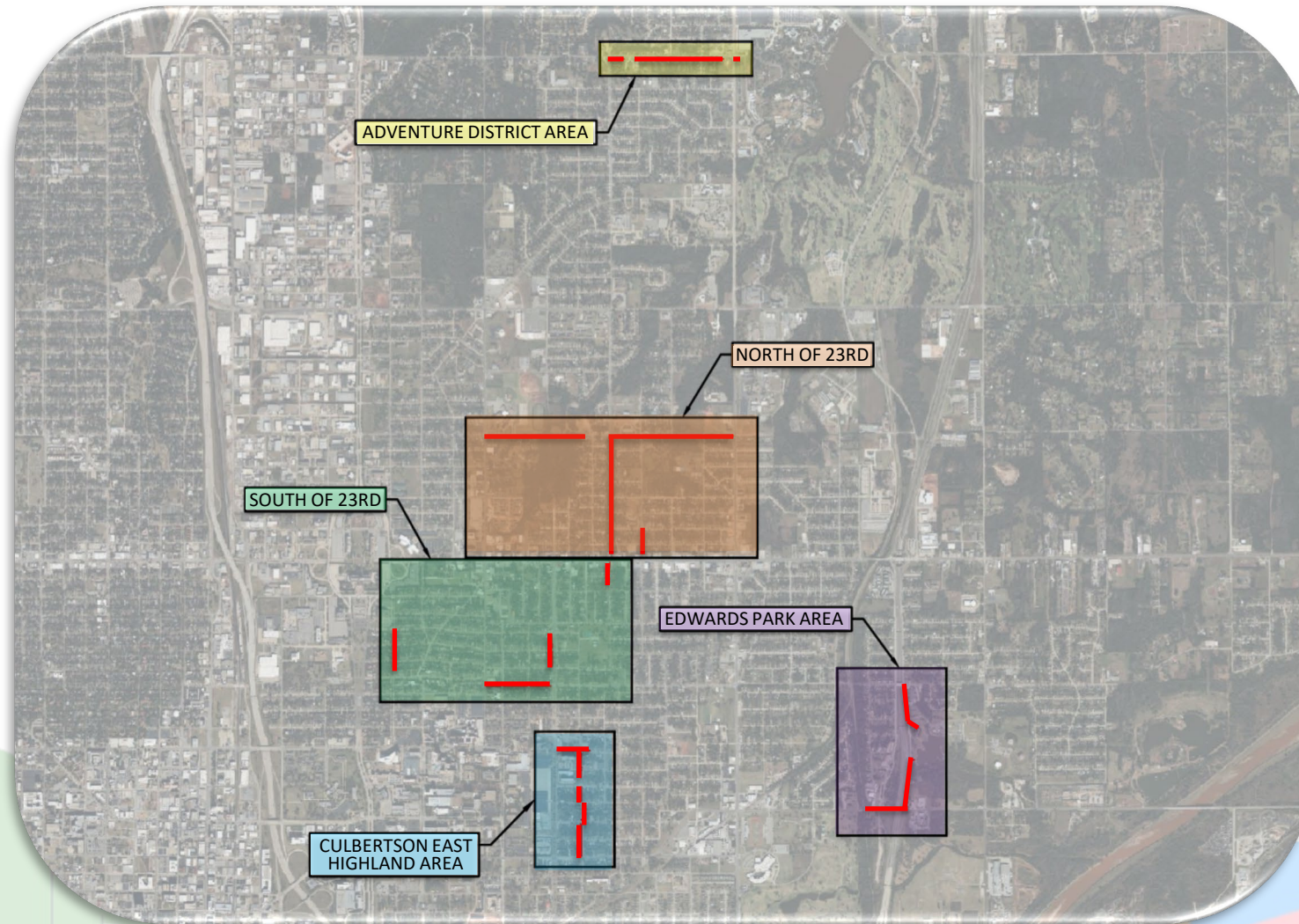
N Prospect Avenue



NE 50<sup>th</sup> Street



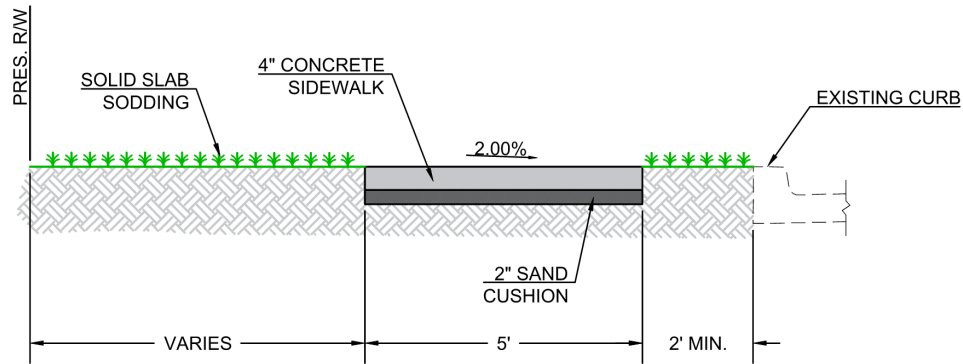
# Project Recommendations





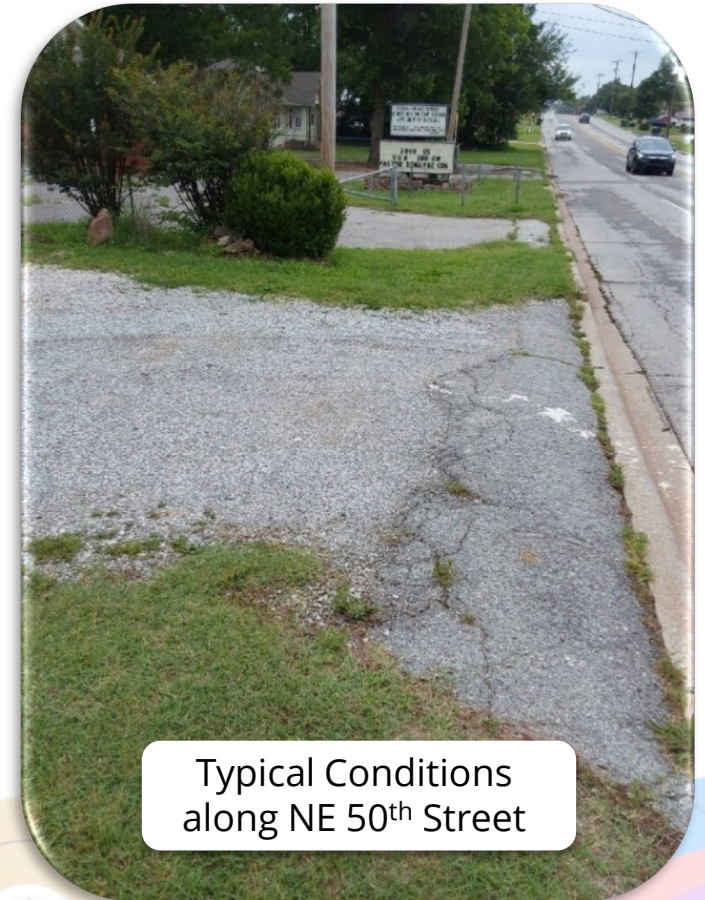
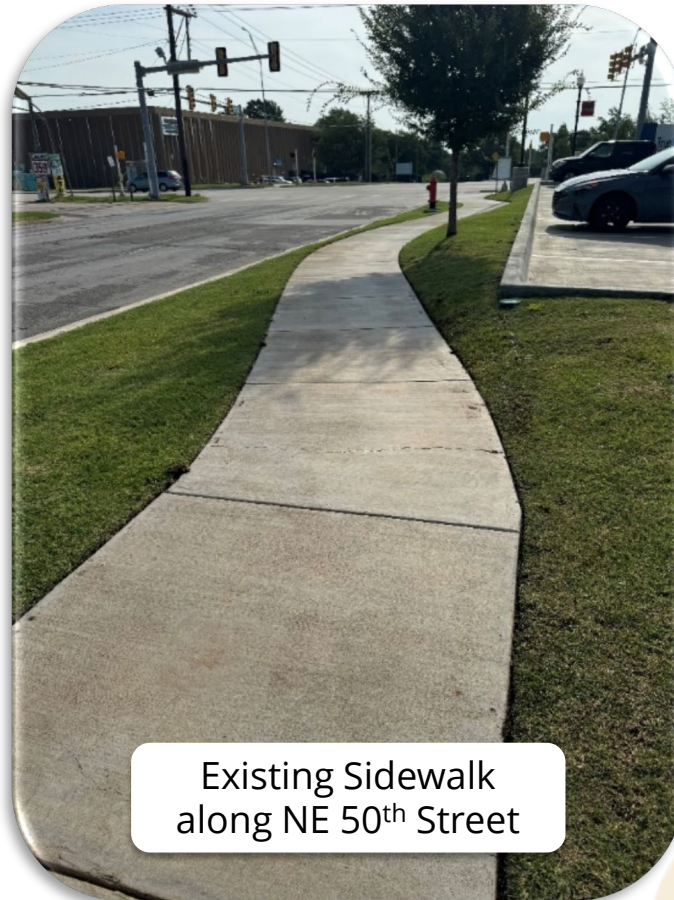
# Adventure District Area

- Connectivity Improvements Along NE 50<sup>th</sup> St and Lincoln Park
- 5' Wide Sidewalk w/ Buffer





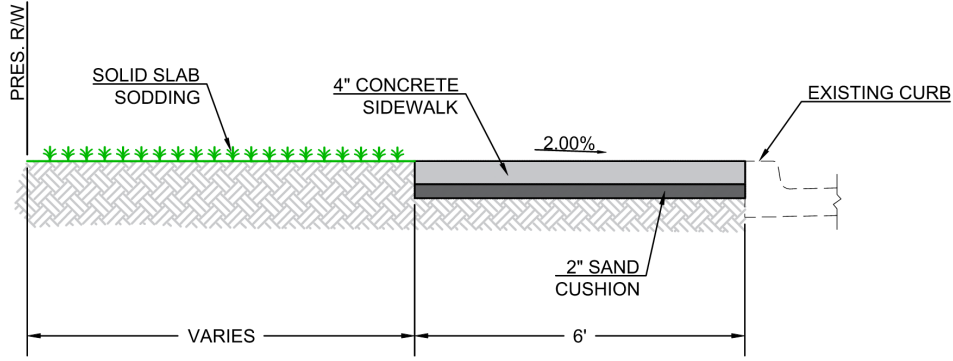
# Adventure District Area





# Edwards Park Area

- Connectivity Improvements Along NE Grand Blvd and NE 10<sup>th</sup> St
- 6' Wide Sidewalk at Back of Curb





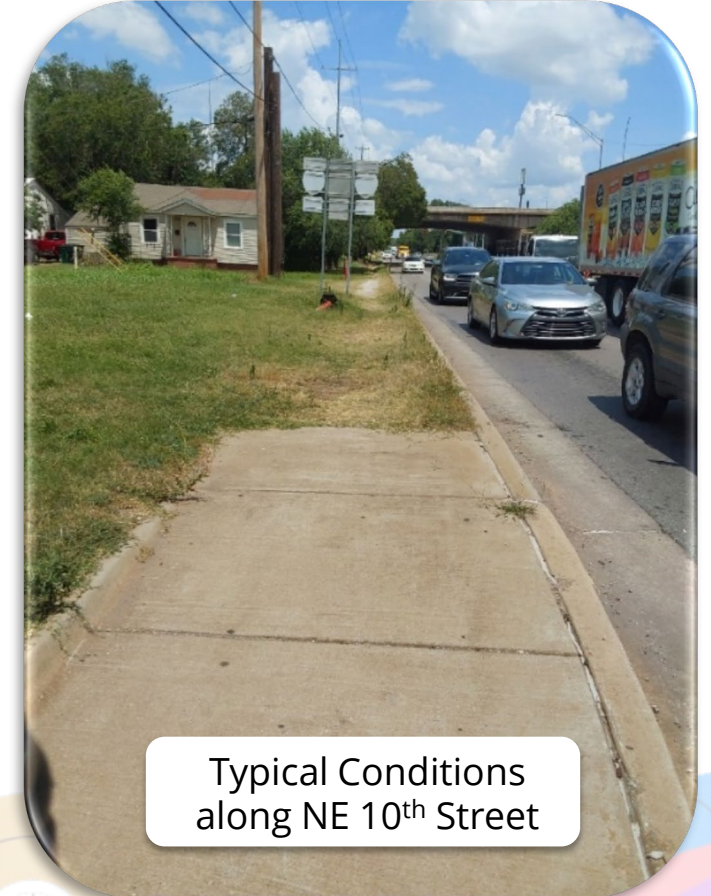
# Edwards Park Area



NE Grand Blvd at  
I-35 On-Ramp



Existing Sidewalk  
along NE 10<sup>th</sup> Street

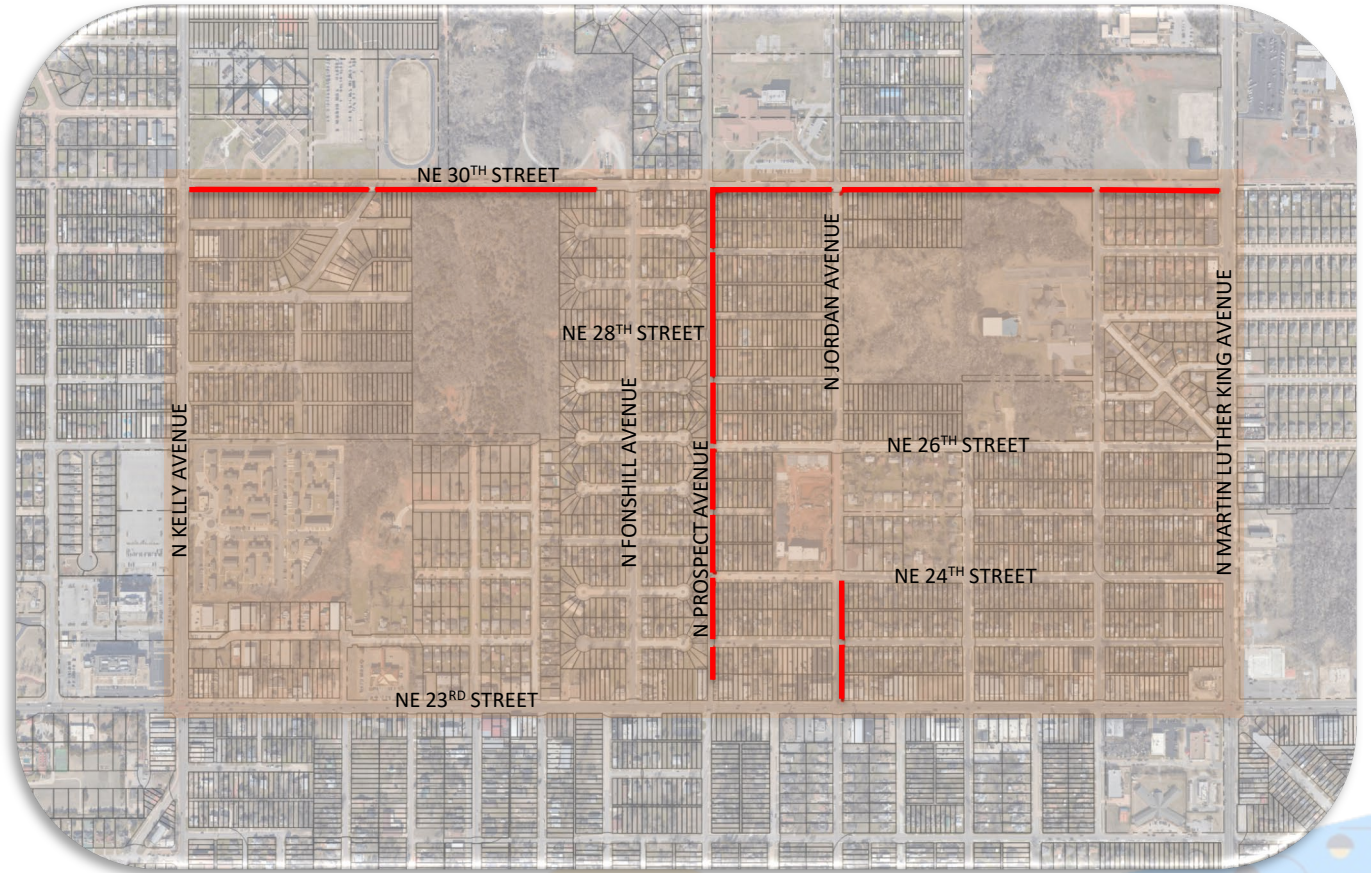
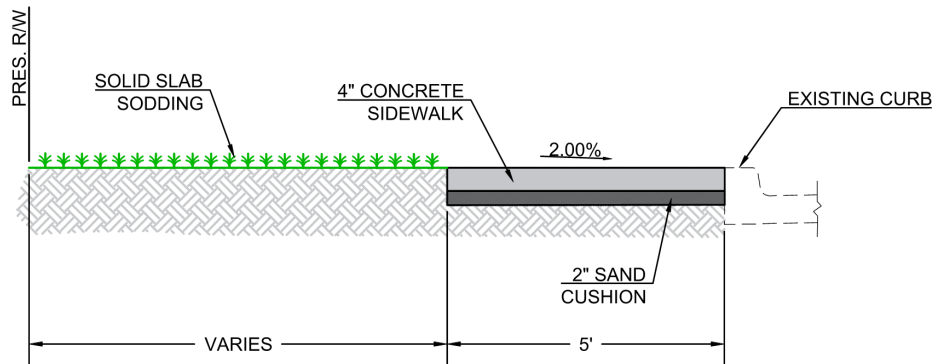


Typical Conditions  
along NE 10<sup>th</sup> Street



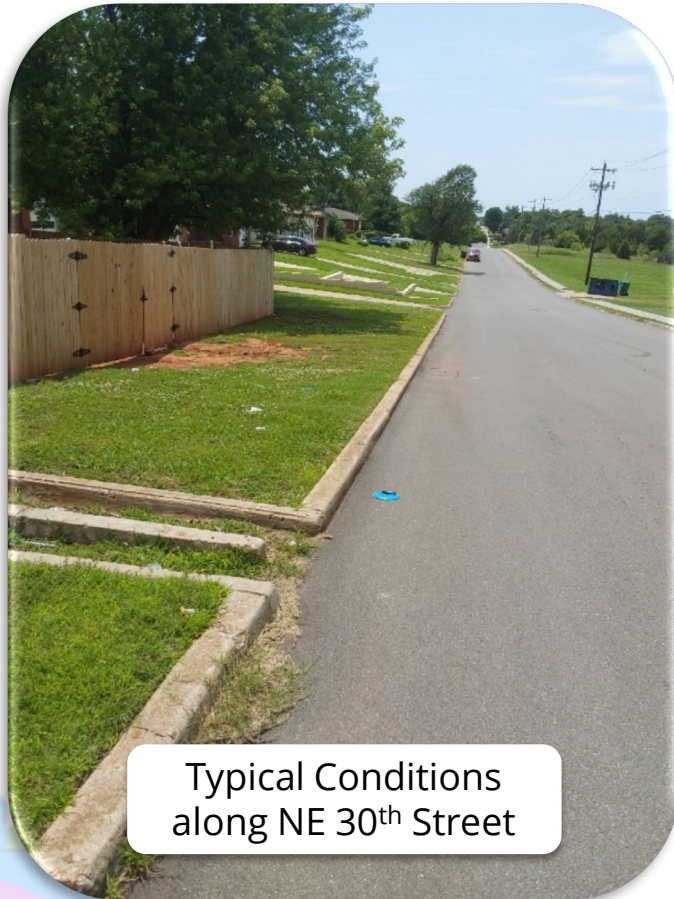
# North of 23<sup>rd</sup> Street

- Connectivity Improvements Along NE 30<sup>th</sup> St, N Prospect Ave, and N Jordan Ave
- 5' Wide Sidewalk at Back of Curb

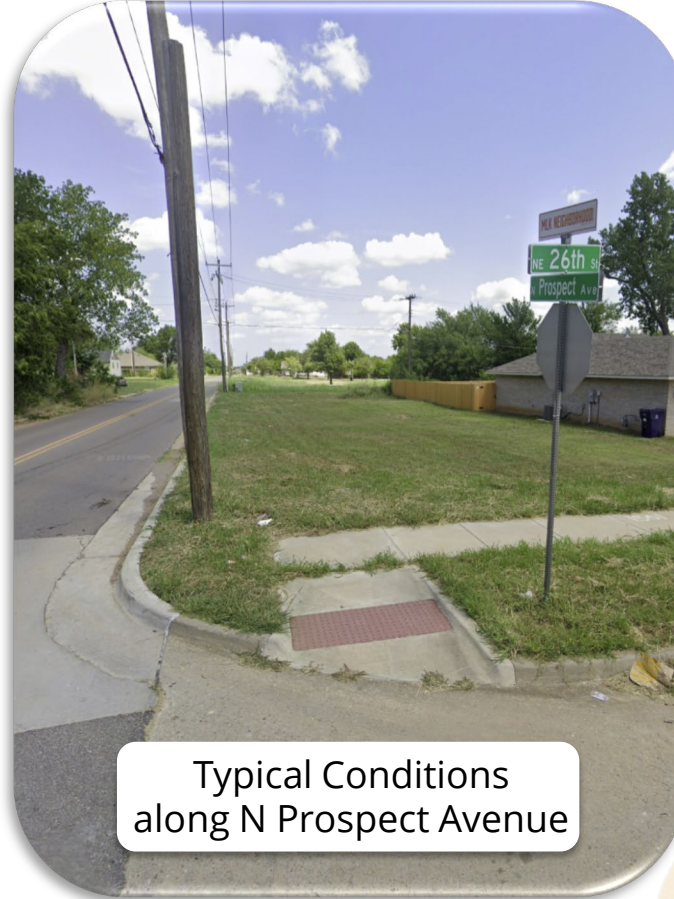




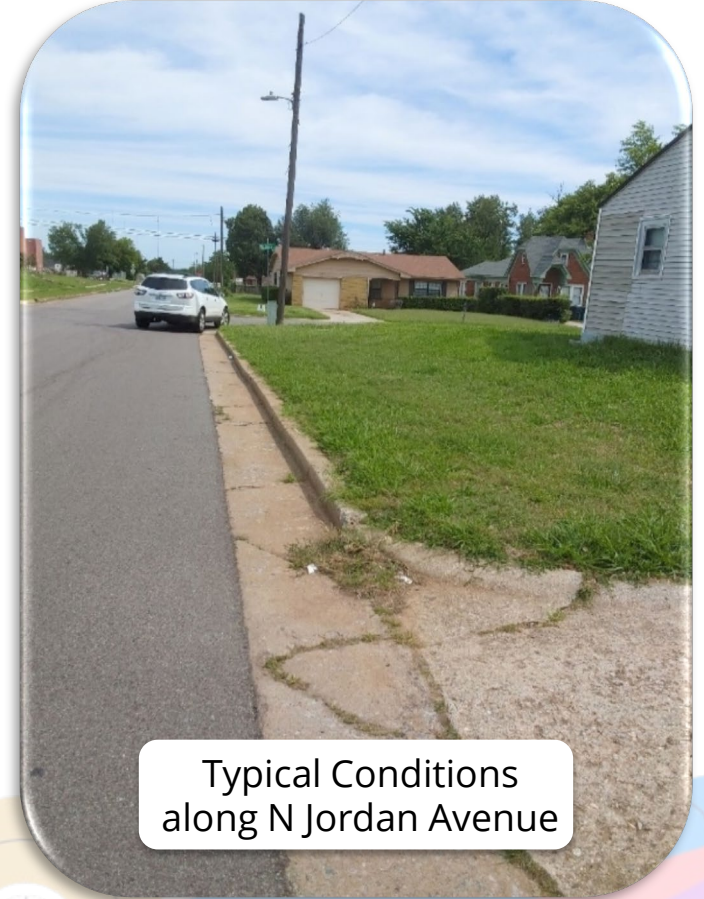
# North of 23<sup>rd</sup> Street



Typical Conditions  
along NE 30<sup>th</sup> Street



Typical Conditions  
along N Prospect Avenue

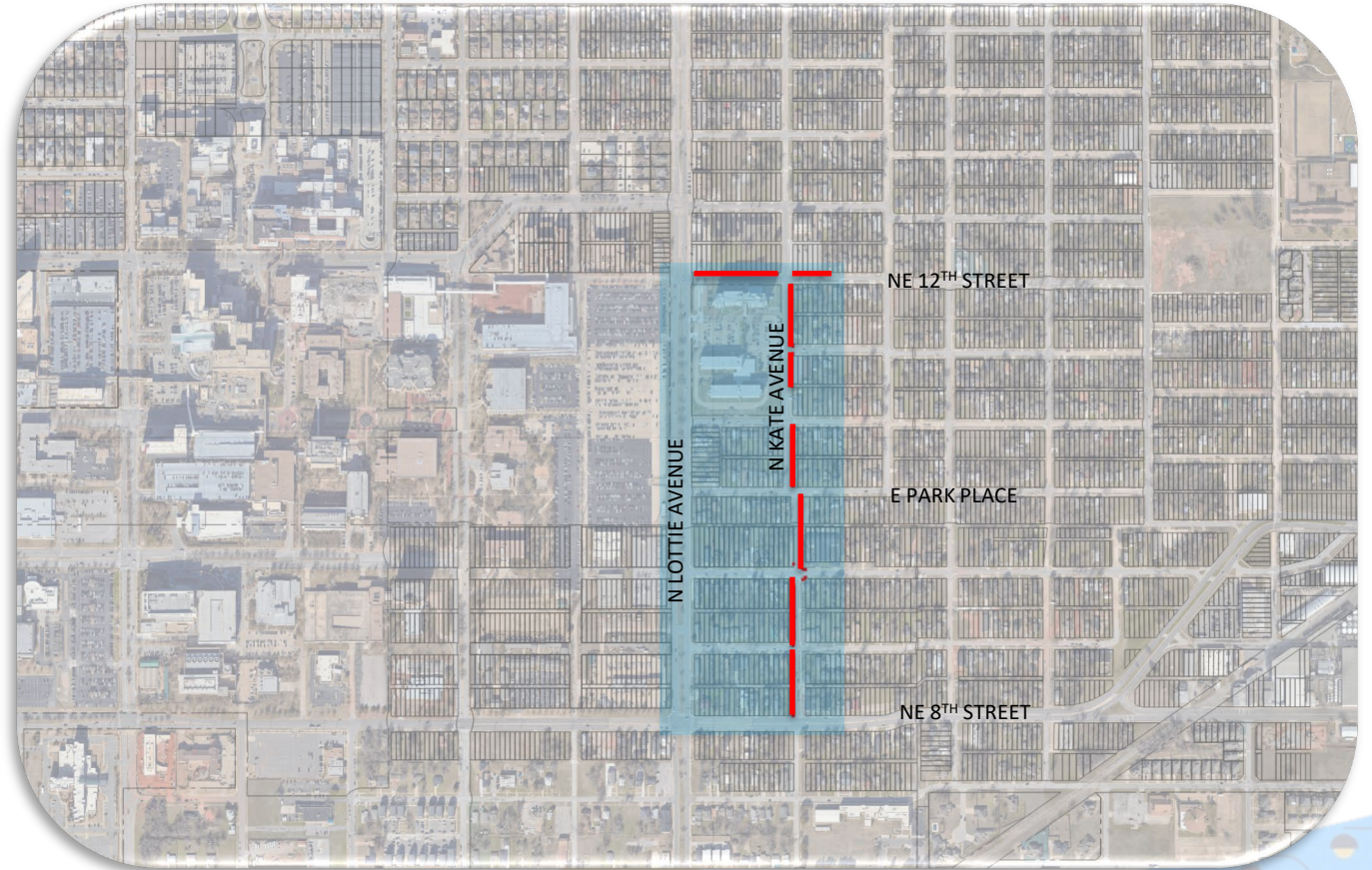
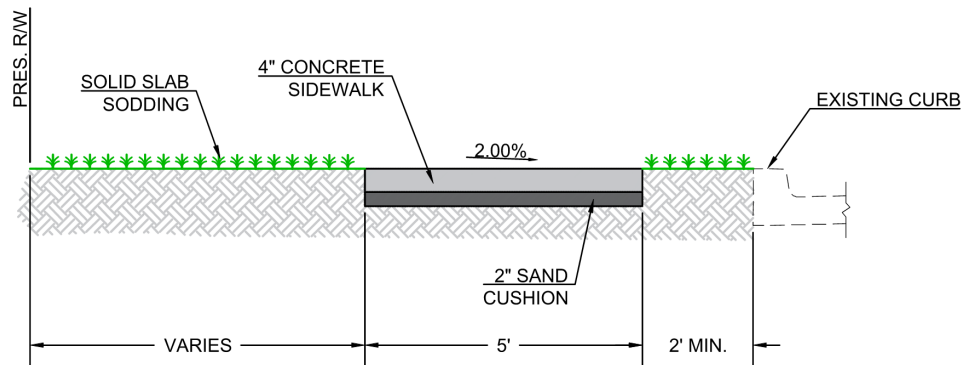


Typical Conditions  
along N Jordan Avenue



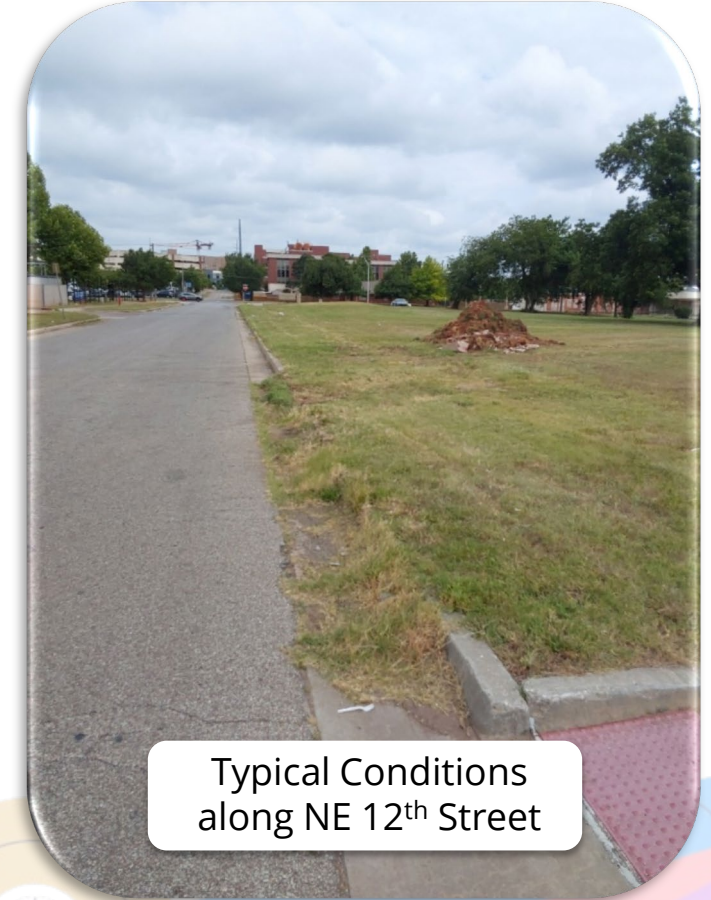
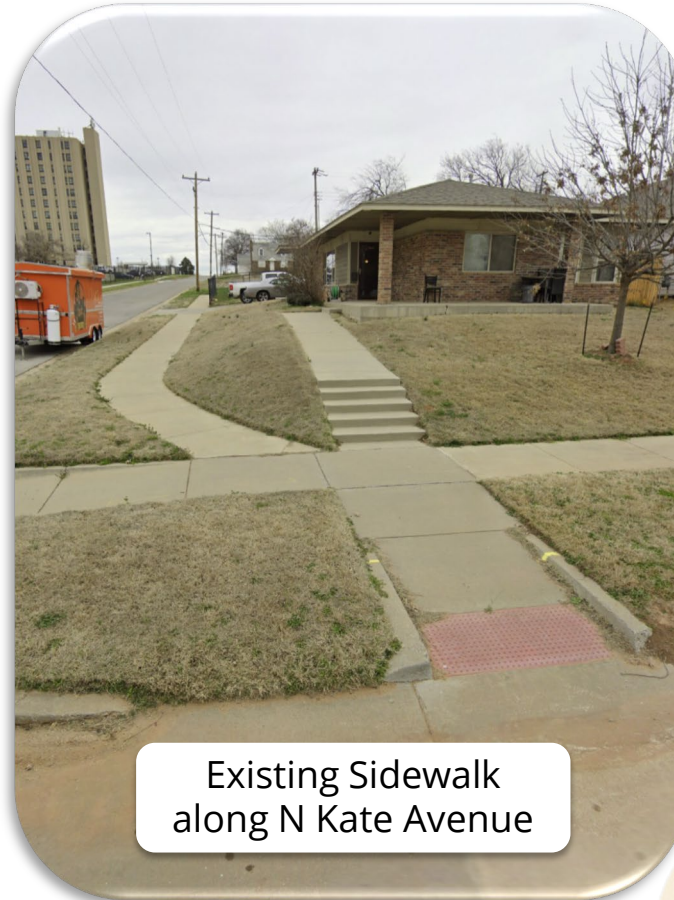
# Culbertson East Highland Area

- Connectivity Improvements Along N Kate Ave and NE 12<sup>th</sup> St
- 5' Wide Sidewalk w/ Buffer





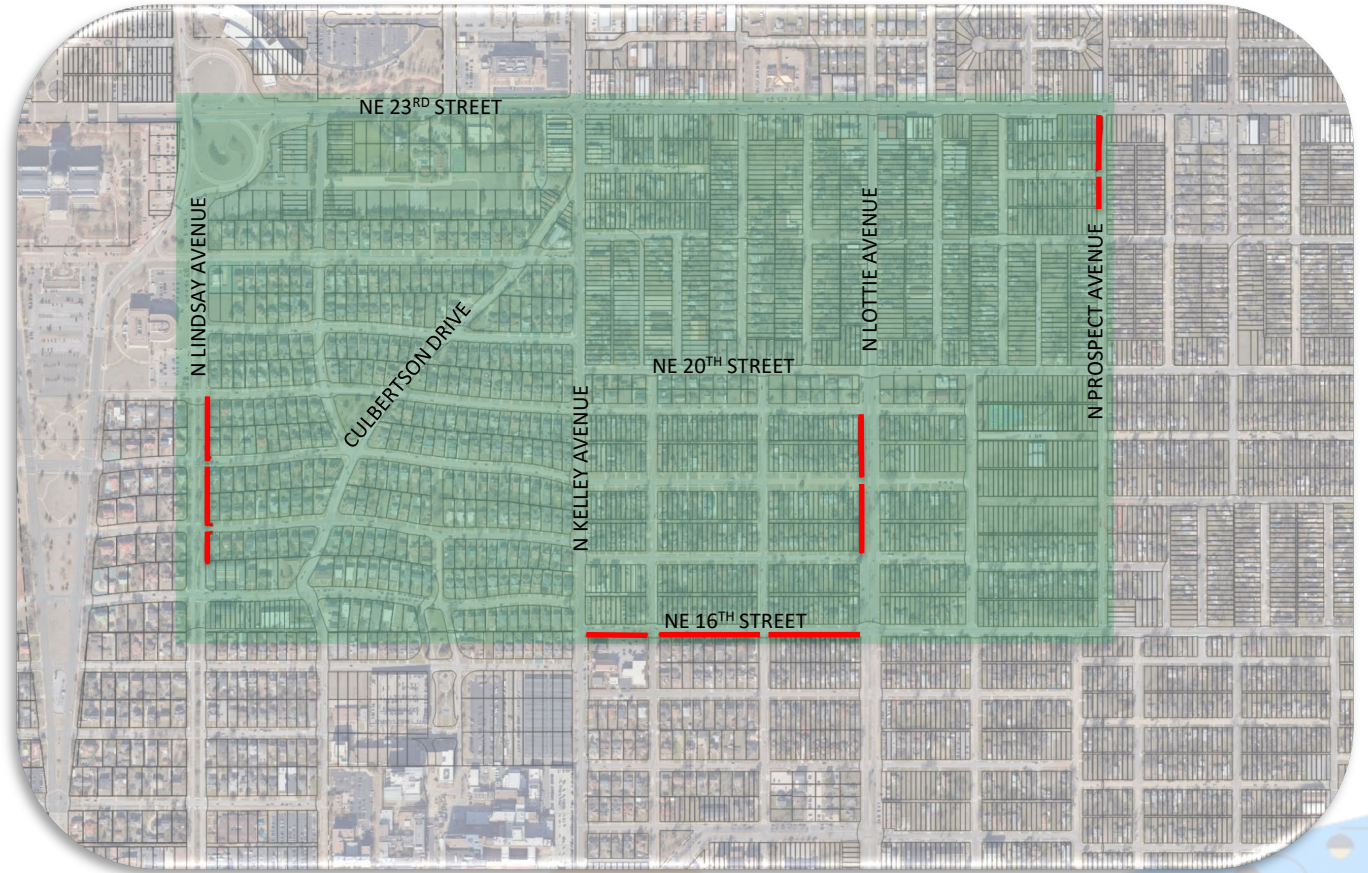
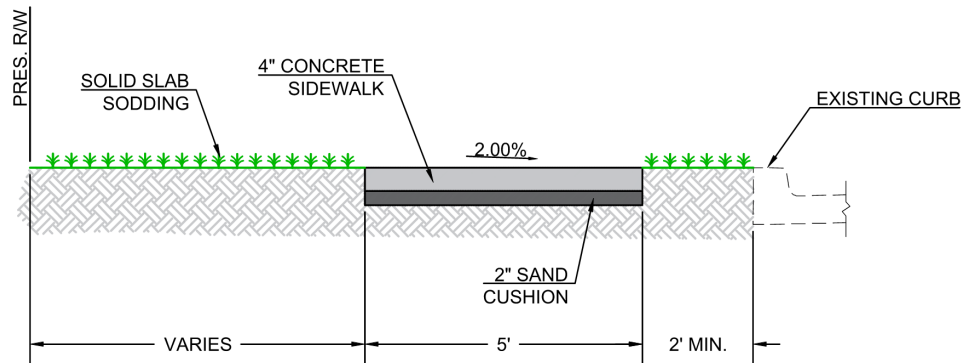
# Culbertson East Highland Area





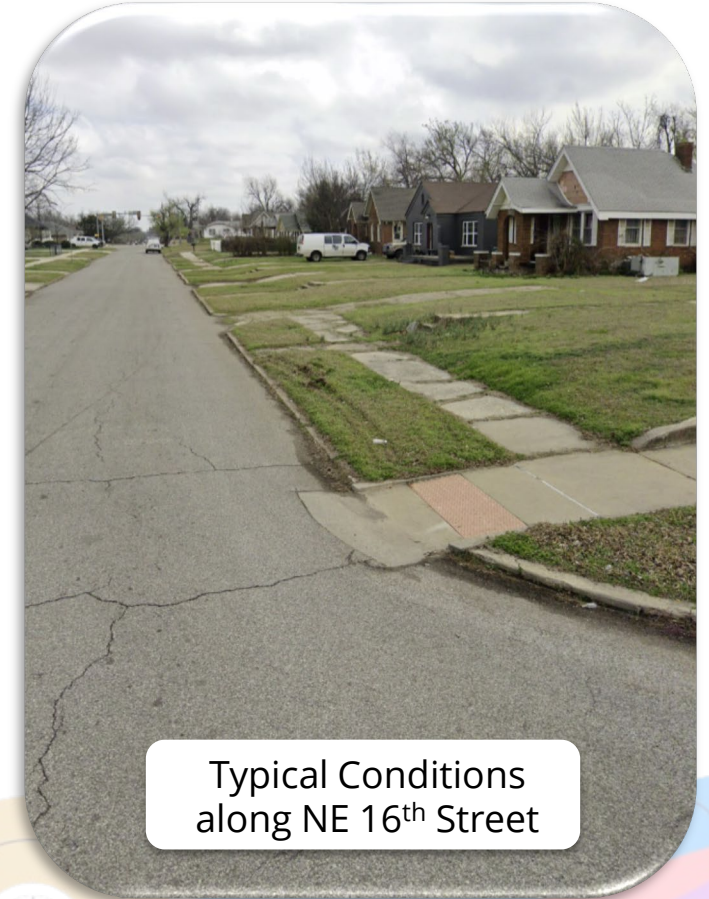
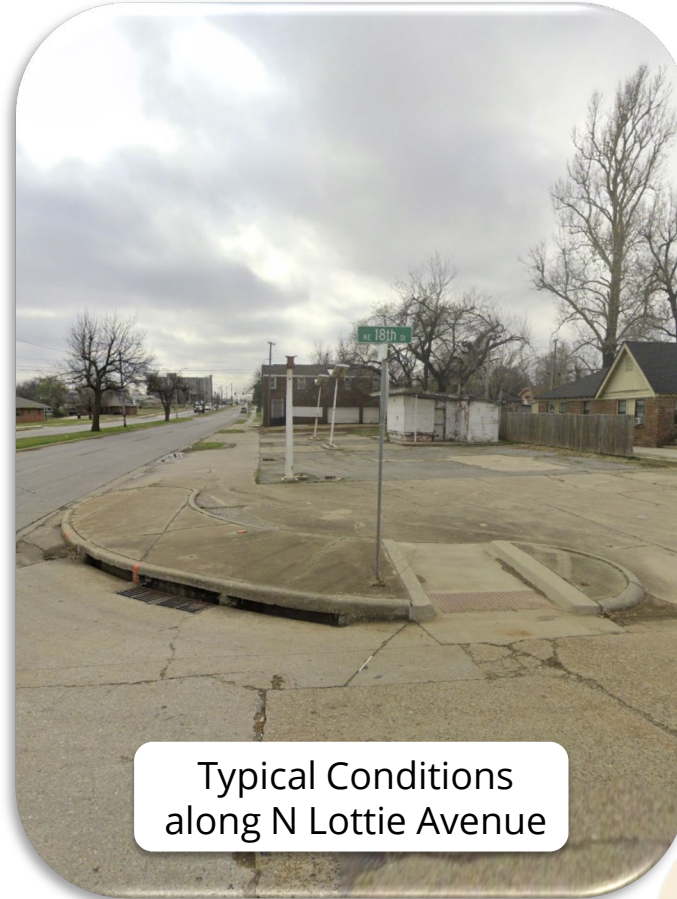
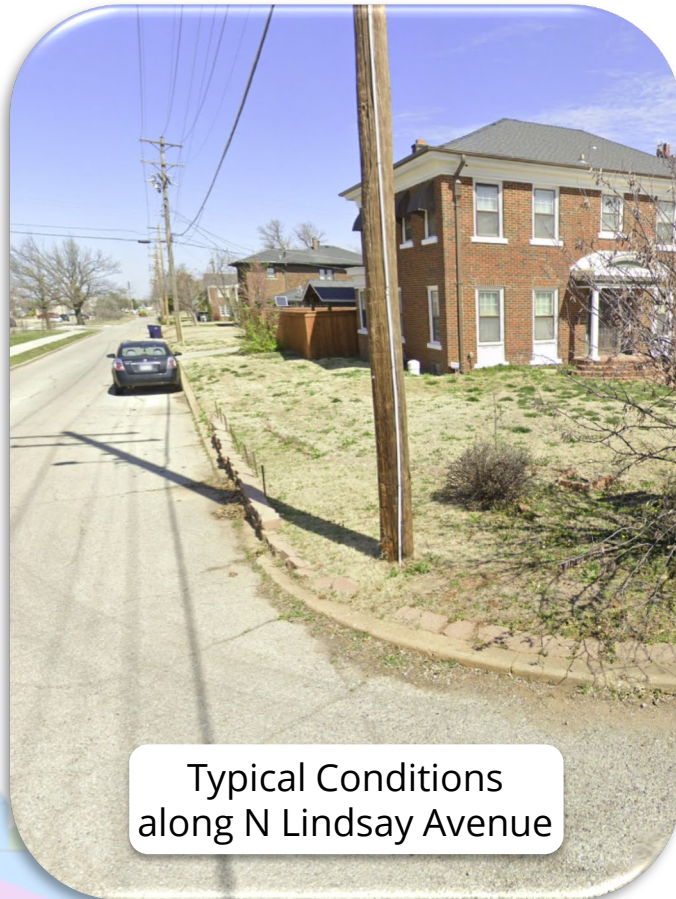
# South of 23<sup>rd</sup> Street

- Connectivity Improvements Along N Lottie Ave, NE 16<sup>th</sup> St, N Lindsay Ave, and N Prospect Ave
- 5' Wide Sidewalk w/ Buffer





# South of 23<sup>rd</sup> Street





# Estimated Construction Cost

## M4-TS021 MAPS 4 Sidewalks and Related Amenities Phase 2B Recommendation

Adventure District Area	\$522,121.55
Edwards Park Area	\$492,993.00
North of 23 <sup>rd</sup> Street	\$1,213,996.48
Culbertson East Highland Area	\$523,387.14
South of 23 <sup>rd</sup> Street	\$1,162,761.07
<b>Estimated Construction Total</b>	<b>\$3,915,259.24</b>
<b>Phase 2B Budget</b>	<b>\$3,939,400.00</b>
<b>Budget Balance</b>	<b>\$24,140.76</b>



# Schedule

M4-TS021 MAPS 4 Sidewalks and Related Amenities Phase 2B Project Schedule	2024												2025												2026													
	January	February	March	April	May	June	July	August	September	October	November	December	January	February	March	April	May	June	July	August	September	October	November	December	January	February	March	April	May	June	July	August	September	October	November	December		
Preliminary Engineering Report																																						
Owner Review																																						
MAPS Presentation																																						
60% Final Plans for Review																																						
Owner Review																																						
ROW Acquisition and Utility Relocations																																						
95% Final Plans for Review																																						
Owner Review																																						
PS&E Submittal																																						
MAPS Presentation																																						
Bidding and Award																																						
Constrution																																						



# Questions and Comments

