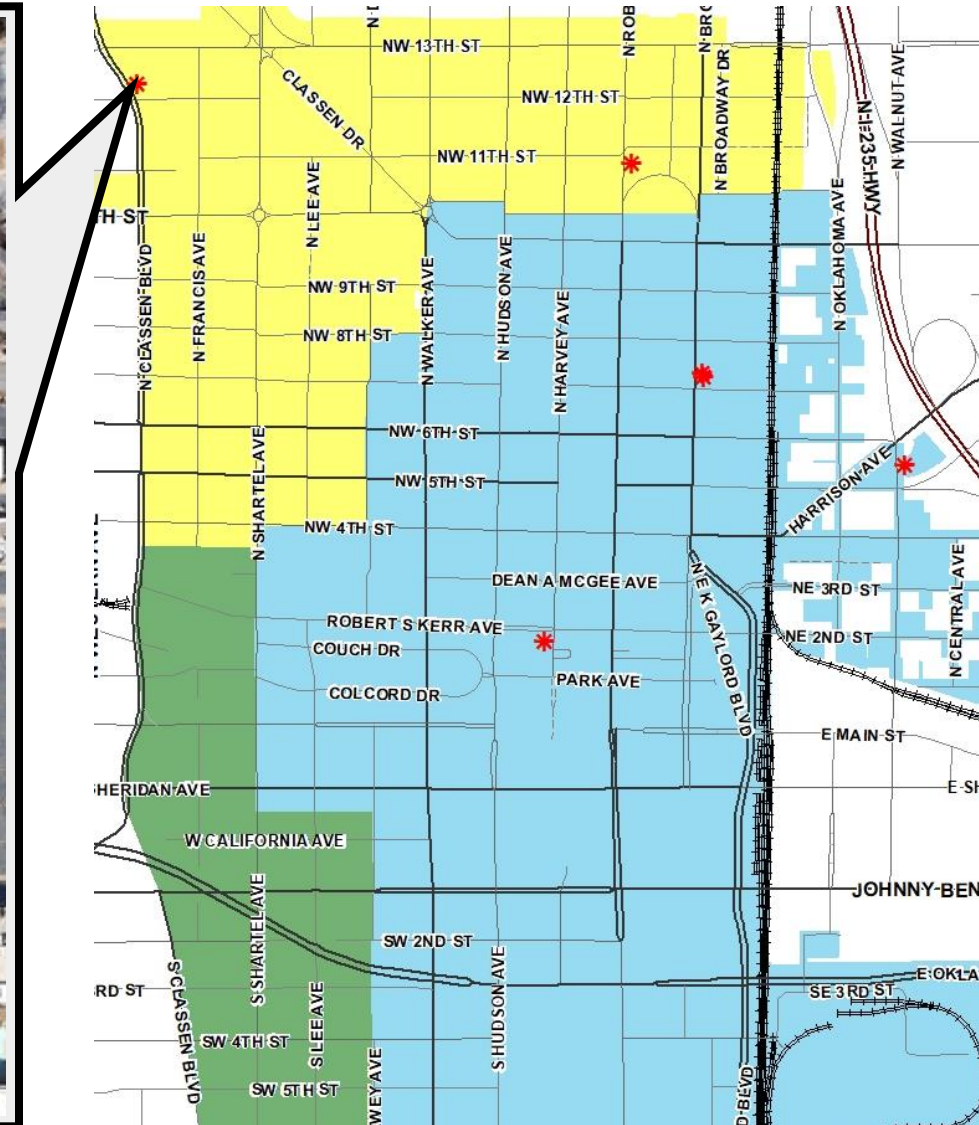


# DTCA-24-00055

## 1328 N Classen Blvd





**DTCA-24-00055**

1328 N Classen Blvd



**View from the subject site looking east toward the adjacent fenced surface parking lot**



**View of the existing retaining wall (to be demolished) looking south towards NW 12th St**

Subject Site





**DTCA-24-00055**

1328 N Classen Blvd



**View from the subject site looking  
west toward N Classen Blvd**



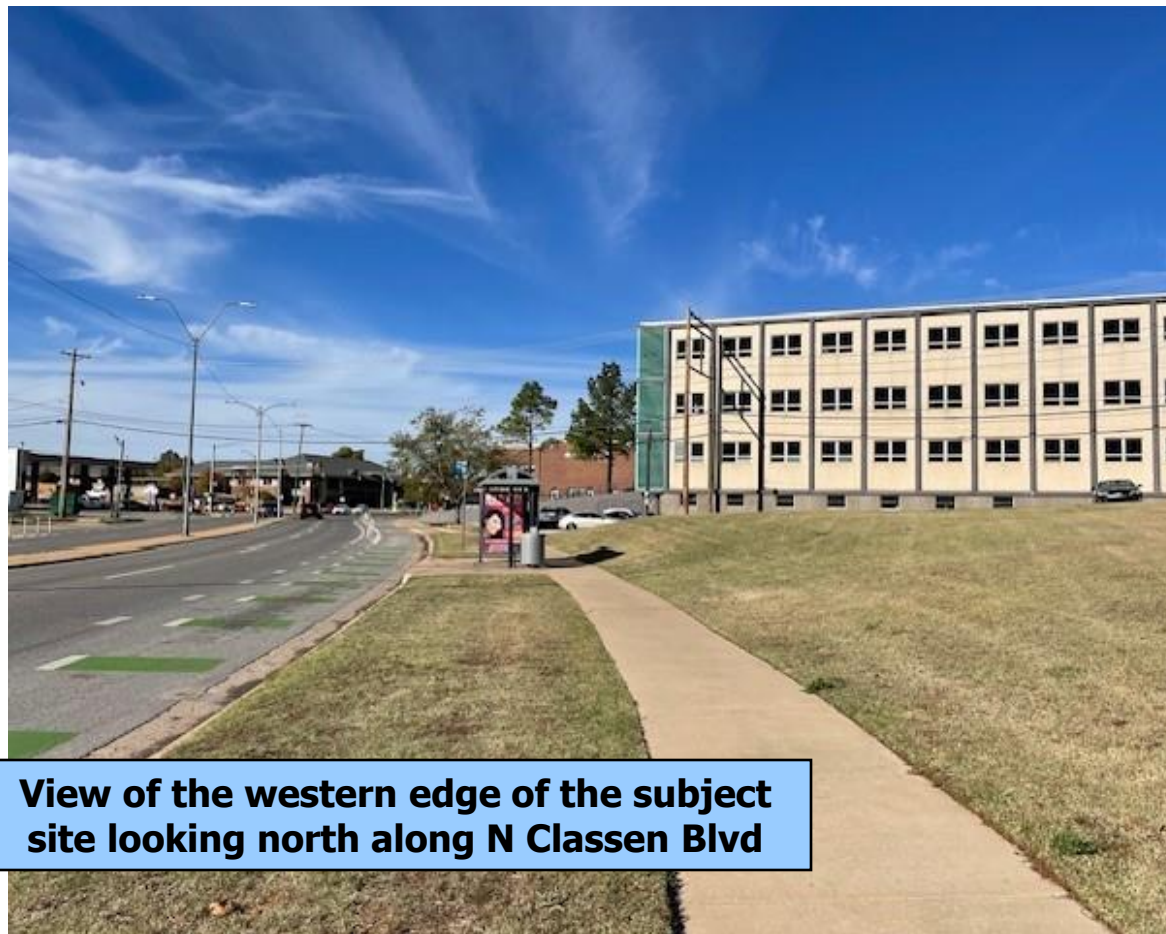
**View of the subject site looking northeast  
from the southwest corner of the site**

Subject Site



**DTCA-24-00055**

1328 N Classen Blvd



**View of the western edge of the subject site looking north along N Classen Blvd**



**View of the southern edge of the subject site looking east along NW 12th St**

Subject Site





**DTCA-24-00055**

1328 N Classen Blvd



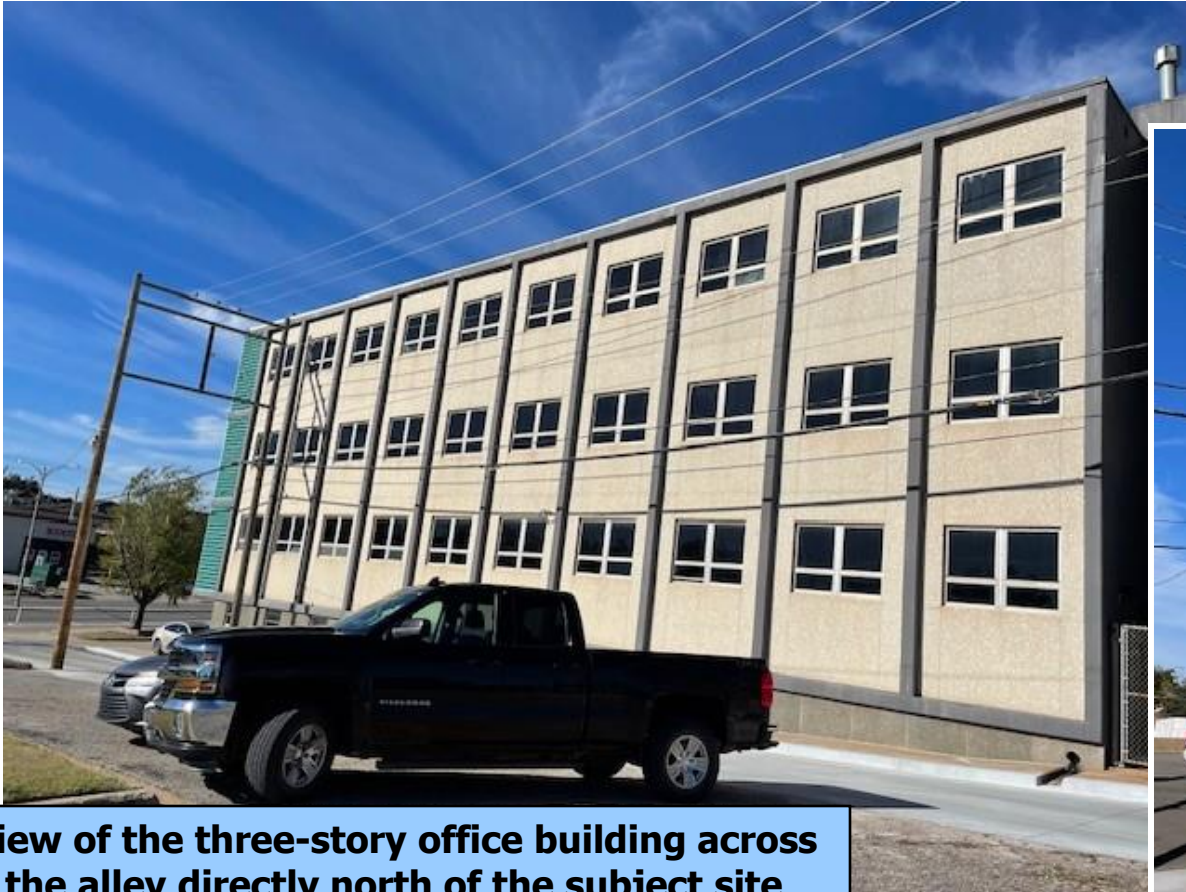
**View of the western edge of the subject site looking south along N Classen Blvd**

Subject Site



**DTCA-24-00055**

1328 N Classen Blvd



**View of the three-story office building across the alley directly north of the subject site**



**Classen Senior Living Facility located across the alley to the northeast of the subject site**

Surrounding Uses





**DTCA-24-00055**

1328 N Classen Blvd



**Catholic Charities building on the south side of NW 12th St directly across from the subject site**



**Surface parking lot (for Classen Senior Living) located directly east of the subject site (GoogleMaps image)**

Surrounding Uses



**DTCA-24-00055**

1328 N Classen Blvd



**View of the torque converter shop on the west side of N Classen Blvd directly across from the subject site**

Surrounding Uses

