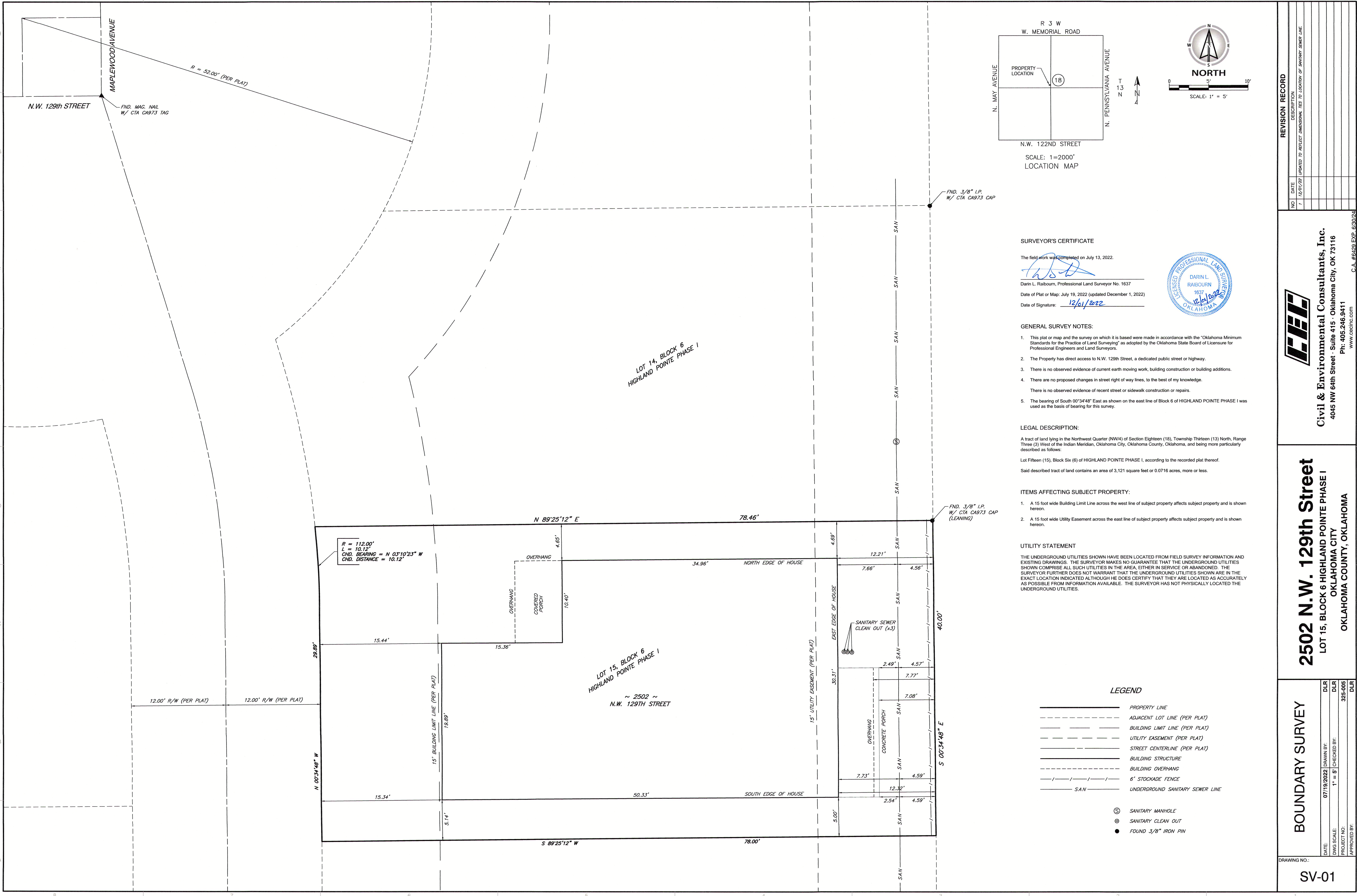


FILE P:\320-000\325-005-SURVEY\DWG\325005-SV01-LOT 15 BLOCK 06 DWG PLOTTED BY: RAIBOURN, DARIN PLOTTED ON: 12/01/22 11:03:49 AM



Civil & Environmental Consultants, Inc.
4045 NW 64th Street - Suite 415 - Oklahoma City, OK 73116
Ph: 405 246 9411
www.cesinc.com

2502 N.W. 129th Street
LOT 15, BLOCK 6 HIGHLAND POINTE PHASE I
OKLAHOMA CITY
OKLAHOMA COUNTY, OKLAHOMA

BOUNDARY SURVEY

DATE: 07/19/2022
DWG SCALE: 1" = 5'
PROJECT NO: 325-005
APPROVED BY:

DRAWN BY: DLR
CHECKED BY: DLR

SV-01

SV-01