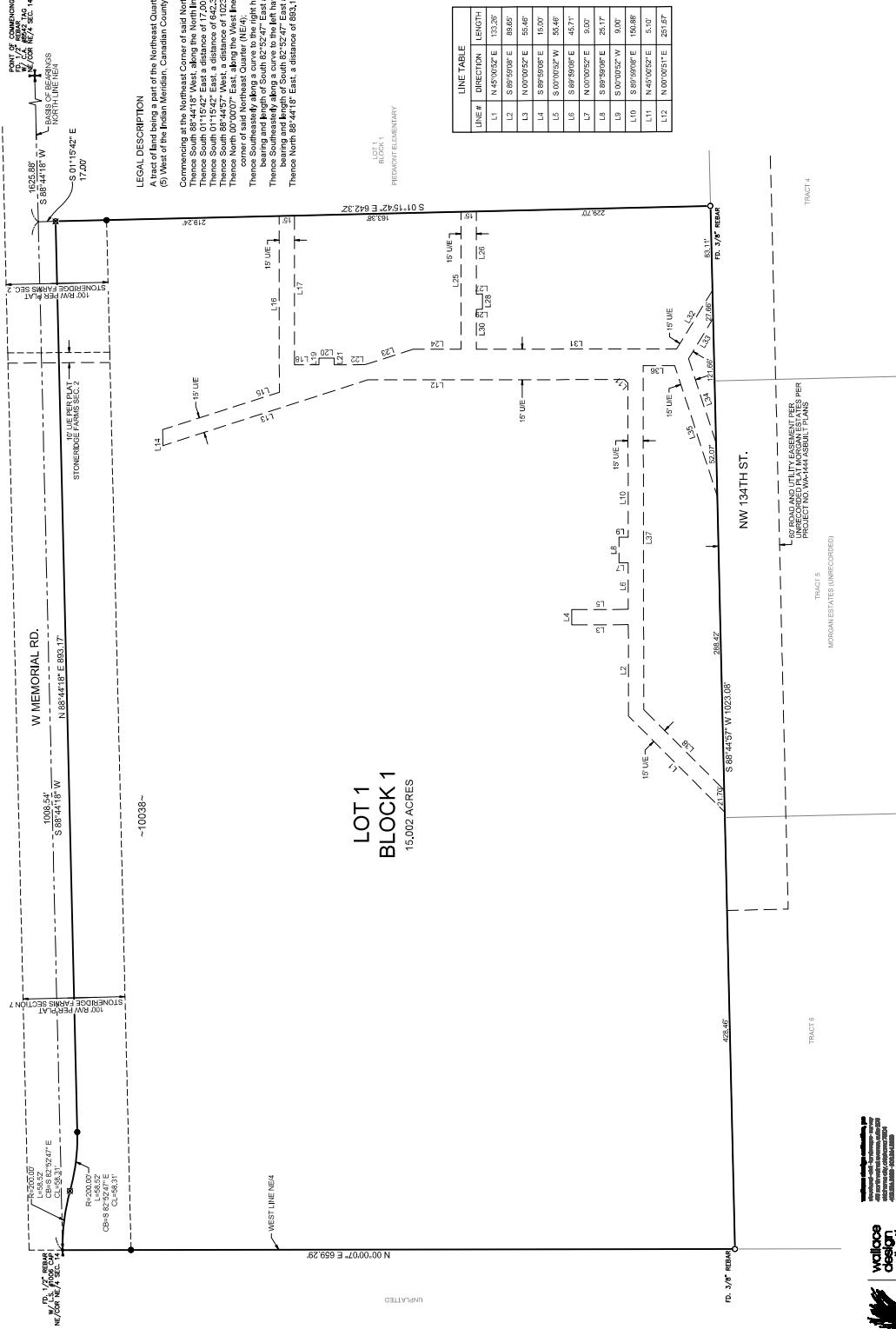
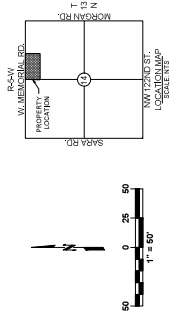


FINAL PLAT  
PIEDMONT INTERMEDIATE ON MEMORIAL  
BEING A PART OF THE NE/4 OF SEC. 14, T. 13N., R. 5W., I.M.  
CITY OF OKLAHOMA CITY, CANADIAN COUNTY, OKLAHOMA



LEGAL DESCRIPTION

A tract of land being a part of the Northeast Quarter (NE/4) of Section Fourteen (14), Township Thirteen (13) North, Range Five (5) West of the Indian Meridian, Canadian County, Oklahoma, being more particularly described as follows:

Commencing at the Northeast Corner of said Northeast Quarter (NE/4);

Thence South 88°44'18" West, along the North line of said Northeast Quarter (NE/4) a distance of 1625.88 feet;

Thence South 01°15'42" East, a distance of 1008.54 feet, to the POINT OF BEGINNING;

Thence South 01°15'42" West, a distance of 1023.08 feet, to a point on the West line of said Northeast Quarter (NE/4);

Thence North 00°00'07" East, along the West line of said Northeast Quarter (NE/4), a distance of 659.29 feet, to the Northwest Corner of said Northeast Quarter (NE/4);

Thence Southeast along a curve to the right having a radius of 200.00 feet, said curve being subtended by a chord having a bearing and length of South 82°52'47" East and 59.31 feet, for an arc distance of 59.32 feet, to a point of reverse curvature;

Thence Southeast along a curve to the left having a radius of 200.00 feet, said curve being subtended by a chord having a bearing and length of North 82°52'47" West and 59.31 feet, for an arc distance of 59.32 feet, to a point of tangency;

Thence North 88°44'18" East, a distance of 853.17 feet, to the POINT OF BEGINNING.

LOT 1  
BLOCK 1  
15.002 ACRES

UNPLATTED

LOT 1  
BLOCK 1  
PIEDMONT ELEMENTARY

LINE #	DIRECTION	LENGTH
L1	N 45°00'52" E	133.26'
L2	S 88°59'08" E	89.65'
L3	N 00°00'52" E	55.46'
L4	S 88°59'08" E	15.50'
L5	S 07°02'52" W	35.46'
L6	S 88°59'08" E	45.71'
L7	N 00°00'52" E	9.00'
L8	S 88°59'08" E	25.17'
L9	S 07°02'52" W	0.00'
L10	S 88°59'08" E	153.86'
L11	N 45°00'52" E	5.07'
L12	N 00°00'51" E	251.87'

LINE #	DIRECTION	LENGTH
L13	N 17°13'14" W	210.34'
L14	N 88°44'18" E	15.64'
L15	S 17°41'04" E	120.30'
L16	S 88°59'08" E	172.70'
L17	N 88°59'08" W	146.15'
L18	S 07°02'52" W	24.50'
L19	S 88°59'08" E	5.50'
L20	S 07°02'52" W	15.90'
L21	N 88°59'08" W	6.50'
L22	S 07°02'52" W	30.27'
L23	S 17°41'04" E	49.34'
L24	S 07°00'51" W	47.69'

LINE #	DIRECTION	LENGTH
L25	S 88°59'08" E	134.78'
L26	N 88°59'08" W	91.00'
L27	S 07°02'52" W	6.00'
L28	N 88°59'08" W	15.50'
L29	N 00°00'52" E	6.00'
L30	N 88°59'08" W	39.11'
L31	S 00°00'51" W	196.36'
L32	S 88°59'08" E	62.07'
L33	N 88°59'08" W	46.03'
L34	S 17°02'52" W	36.65'
L35	N 72°02'52" E	134.54'
L36	N 07°00'51" E	30.79'

MONUMENTATION

SECTION CORNER

QUARTER SECTION CORNER

ROUND MONUMENT AS DESCRIBED

SET MAG NAIL W/ C.A. # 4881 TAG

SET MAG NAIL W/ C.A. # 4881 TAG

WALLACE DESIGN COLLECTIVE

WALLACE DESIGN COLLECTIVE