
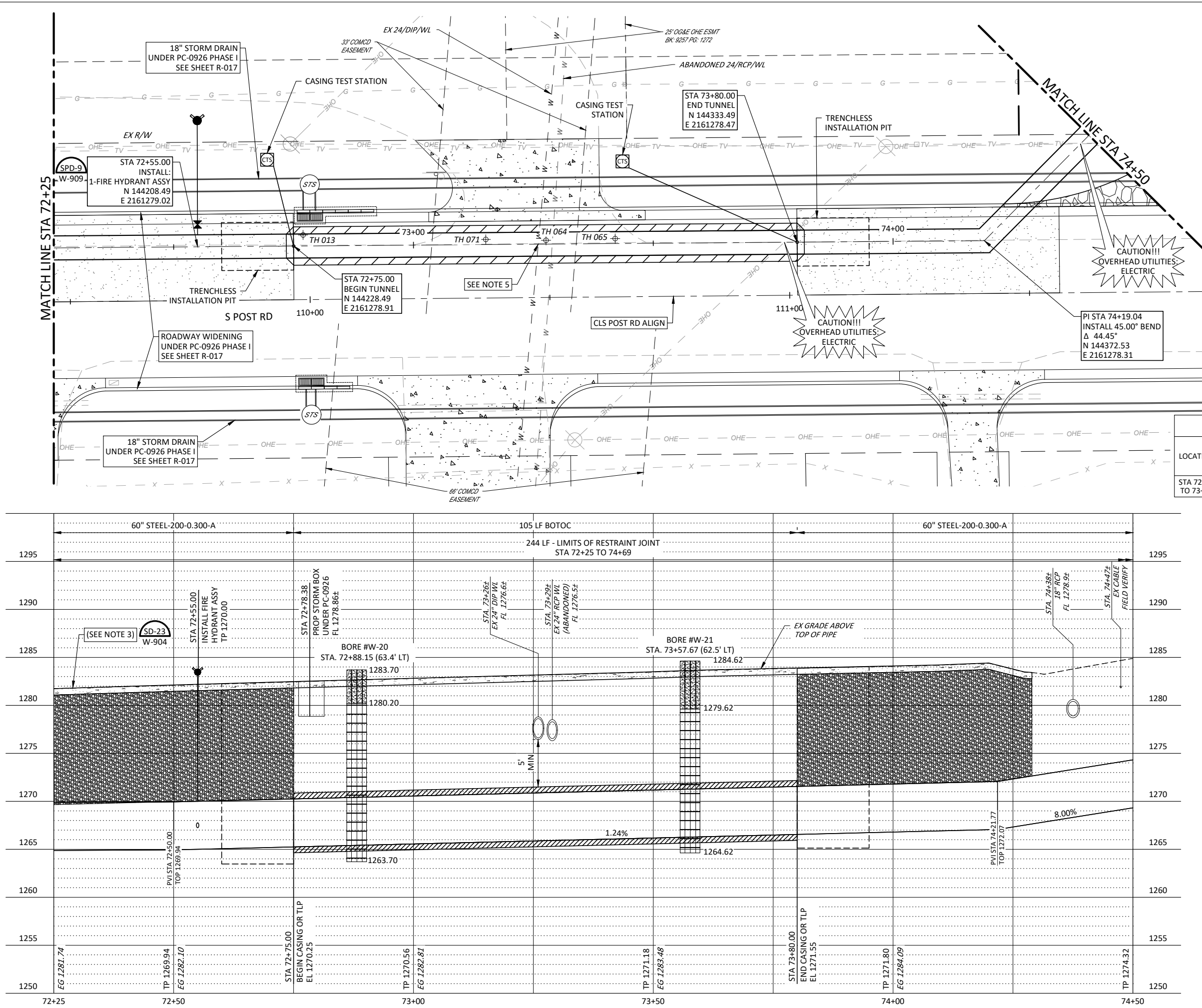


SHEET		SHEET NAME		60-INCH STEEL TRANSMISSION MAIN RELOCATION WC-1023 PHASE I ALONG POST RD FROM SE 74TH ST TO SE 59TH ST CITY OF OKLAHOMA CITY, OKLAHOMA		SUBMITTAL:		100% SUBMITTAL		REVISION HISTORY				PLUMMER	
PLAN AND PROFILE STA 71+00 TO STA 83+00		DATE:		1/12/2024		PROJECT NO:		3124-004-01		NO.		DESCRIPTION		DATE	
		DESIGNED BY:		CLF		DRAWN BY:		FJC							
		APPROVED BY:		ADS											
		SCALE:		AS SHOWN											

PLOT DATE: 1/11/2024



- 10 5 0 10 20
HORIZ. SCALE : 1" = 10'
5 2.5 0 5 10
VERT. SCALE : 1" = 5'
- NOTES:
- PIT LIMITS IDENTIFY APPROXIMATE AREA OF EXCAVATION DURING TUNNEL INSTALLATION. PIT LIMITS ARE SUBJECT TO CONTRACTOR PHASING WITH OPEN CUT CONSTRUCTION AND ARE SUBJECT TO VARY PER CONTRACTOR'S MEANS AND METHODS.
 - TOP OF PIPE ELEVATION SHOWN REFLECTS THE NOMINAL CARRIER PIPE DIMENSION.
 - THE CONTRACTOR WILL USE DETAIL 23 ON SHEET W-904 WHENEVER THE STEEL PIPE IS INSTALLED UNDER THE ROADWAY.
 - THE CONTRACTOR SHALL FILL THE TRENCH ZONE WITH COMPACTED AGGREGATE TO WITHIN 6-INCHES OF THE EXISTING GROUND.
 - SEE SPECIFICATION APPENDIX B COMCD AS-BUILT SHEET C-311.

MINIMUM TUNNEL REQUIREMENTS (W-103)				
LOCATION	CARRIER PIPE		2-FLANGE TLP	4-FLANGE TLP
	DIA	MATERIAL	3.25 80.75" - 10 GAGE	84.00" - 10 GAGE
STA 72+75 TO 73+80	60"	STEEL		84" - 0.688"

* FOR MORE INFORMATION SEE STANDARD DETAILS 25 AND 26 ON SHEET W-904

TEST HOLE INFORMATION			
NAME	UTILITY TYPE	MATERIAL	DEPTH (FT)
TH 013	COMM (ATT)	1" CABLE	3.25
TH 064	WATER (COMCD)	42" STEEL CASING	6.92
TH 066	GAS (ONG)	16" STEEL	4.83
TH 071	WATER (COMCD) (ABANDONED)	21" RCP	4.42

BORE LEGEND

- SANDY SILT
- SILTY SANDSTONE

60-INCH STEEL TRANSMISSION MAIN
RELOCATION
WC-1023 PHASE I
ALONG POST RD FROM SE 74TH ST TO SE 59TH ST
CITY OF OKLAHOMA CITY, OKLAHOMA

SHEET NAME
TRENCHLESS CROSSING
ACROSS COMCD PIPELINE

SHEET
W-103

REVISION HISTORY		NO.	DESCRIPTION	DATE
SUBMITTAL	100% SUBMITTAL			
DATE:	1/11/2024			
PROJECT NO:	3124-004-01			
DESIGNED BY:	CLF			
DRAWN BY:	FIC			
APPROVED BY:	ADS			
SCALE:	AS SHOWN			

531 COUCH DR, STE 200 | OKLAHOMA CITY, OK 73102
405.440.2725 | OKLAHOMA FIRM NO. 1097

PLUMMER