

MAPS4



ADG

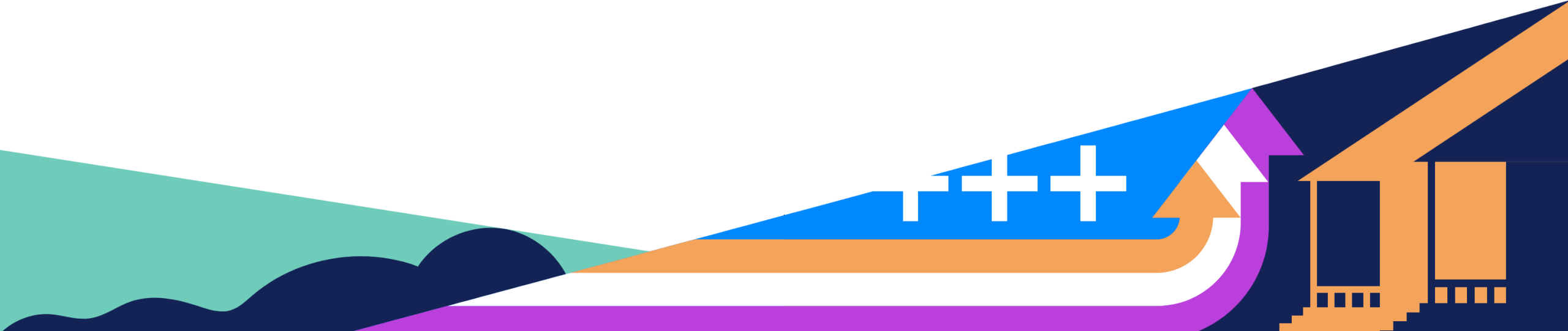
Operator MOUs

Me n t a l He a l t h Cr i s i s Ce n t e r No . 1
Re s t o r a t i o n Ce n t e r

City Council

01.16.2024

@MAPS4OKC



Operator Selection and Agreement



ADVERTISEMENT

SELECTION

AGREEMENT DEVELOPMENT

MAAPSS

Operator Selection and Agreement

Formation by Subcommittee,
Citizens Advisory Board, and City
Council





Crisis Centers

Additional RFP Details

- \$12.27M project
- Intended to care for those experiencing a mental health or substance abuse crisis
- Customers may voluntarily admit, but process usually involves family members/caretakers, law enforcement, and/or local hospitals



Crisis Centers

Additional RFP Details

- Oklahoma County Crisis Intervention Center (Gen. Pershing Blvd) viewed as replicable model
 - 16 - bed inpatient crisis center
 - 20 - person recovery
 - Adjoining visitation rooms
 - Secure entry for intake/law enforcement hand - off
 - Enclosed outdoor area
 - Kitchen
 - Admin area



Restoration Center

Additional RFP Details

- \$24.54M project
- A “restoration center” to include
 - Crisis center
 - Methamphetamine detox
 - Substance abuse
 - Other comprehensive services
- City sought Operating Partner capable of managing entire center



Restoration Center

Additional RFP Details

- Similar to Oklahoma County Crisis Intervention Center, but larger facility with more robust spectrum of services
- Also Bexar County (TX) Restoration Center as a model
- Additional components from presentation to City Council
 - Medical Detox including Methamphetamine
 - Medication Assisted Treatment for Opioids
 - Medical Clinic
 - Mobile Crisis Outreach Team
 - Pharmacy
 - Public Inebriate Alternative
 - Wrap - around Services & Case Management



Additional RFP Details

General Requirements

- **Successful respondent were required to**
 - Have relevant experience with similar facilities
 - Be able to provide care and services for a broad spectrum of individuals experiencing a mental health or substance abuse crisis
 - Have the fiscal and service capacity to operate and manage the centers
- **Respondents were required to demonstrate**
 - Operation and service delivery experience with similar facilities
 - Ability to work cooperatively with the City and community



Additional RFP Details

General Requirements

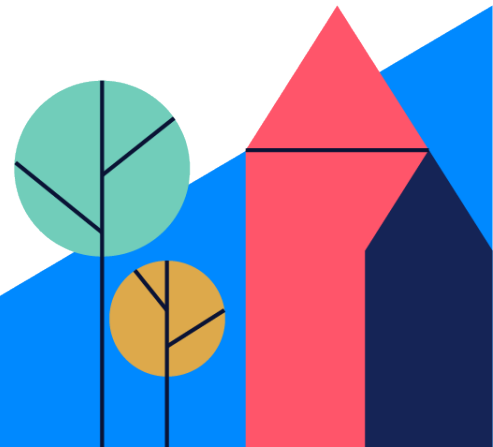
- **Addition of Operating Partner prior to design to allow ample time for input and coordination**
 - Active participation in planning and programming will be key
- **Proposers were allowed to recommend sites or general areas**
- **Intent of Council**
 - Use of the center should prioritize Oklahoma City residents, where possible
 - Construction conditional on:
 - Identification of operational funding from a non - municipal source
 - Operating agreement with measurable benchmarks prior to Dec 31, 2026

Selected Operators

Crisis Center #1

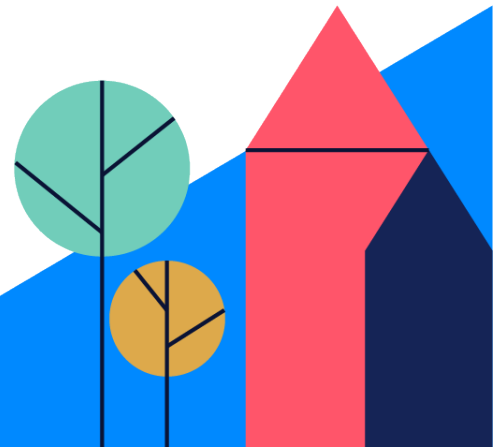


Restoration Center



Anticipated Schedule

- **Spring 2024**
 - Site selection process
 - Approval of selected architects
- **Summer 2024**
 - Start of design
- **Summer 2025**
 - Start of construction
- **Summer 2026**
 - Crisis Center #1 Opening
- **Fall 2026**
 - Restoration Center Opening





Operator MOUs

Mental Health Crisis Center No. 1 Restoration Center

City Council

01.16.2024



ADG

@MAPS4OKC

