



MAPS4

Multipurpose Stadium

Project M4-VM010 - SITE EVALUATION PRESENTATION

JANUARY 2025

POPULOUS



MAPS4

Agenda

01 PROJECT OVERVIEW

02 SITE SELECTION

03 SITE EVALUATION

04 NEXT STEPS

01/ Project Overview

MAPS 4 MULTIPURPOSE STADIUM

BUDGET = \$53,742,887

- 10,000 seats
- USL (Mens) Ready Stadium
- Women's Soccer Ready
- Concert Venue
- Elevated Patron Facilities
- Elevated Team Facilities
- Partial Canopy Coverage
- Auxillary Locker Rooms

FUTURE EXPANSION BUDGET = \$TBD

- Full MLS Experience
- 20,000 seats total
- Exemplary Patron Facilities
- MLS & MWSL Team Facilities
- Full Canopy Coverage

02/ Site Selection

LAND DONATION

- Echo Soccer, LLC donates approximately nine acres of land south of Bricktown
- Approved by City Council in November
- Stadium location selected as part of larger masterplan development

Site Selection



Site Selection



Site Selection

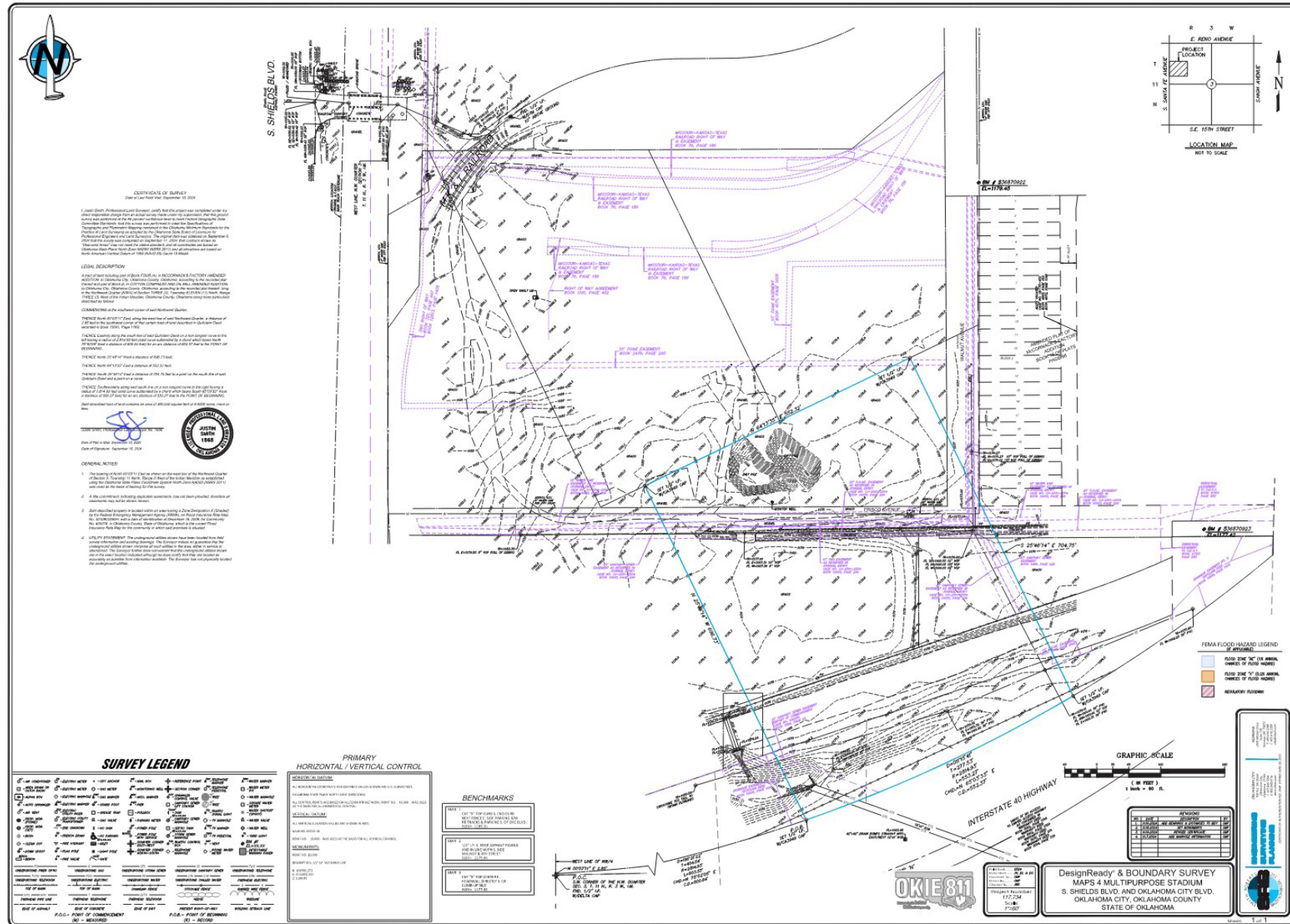


Site Selection

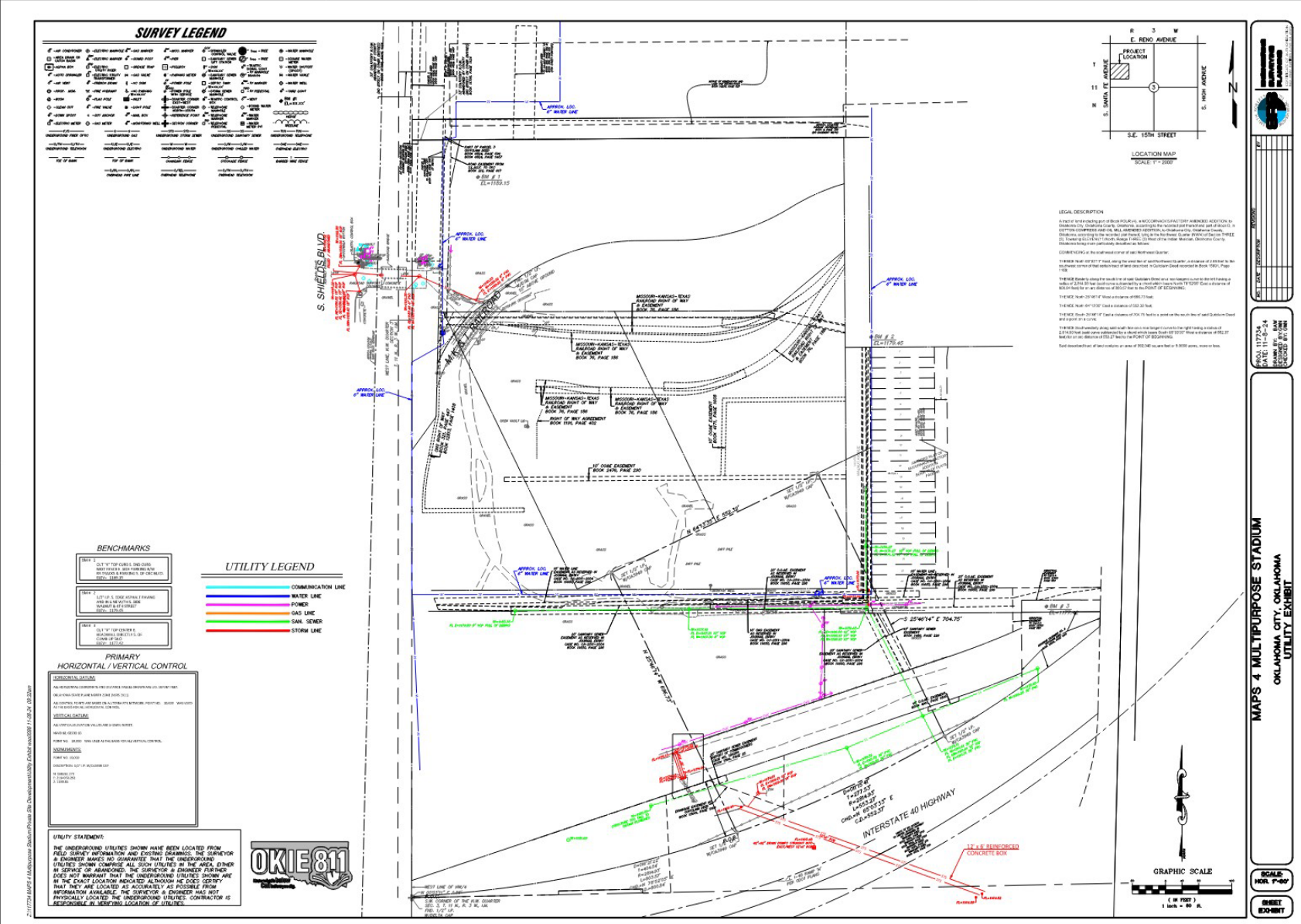


03/ Site Evaluation

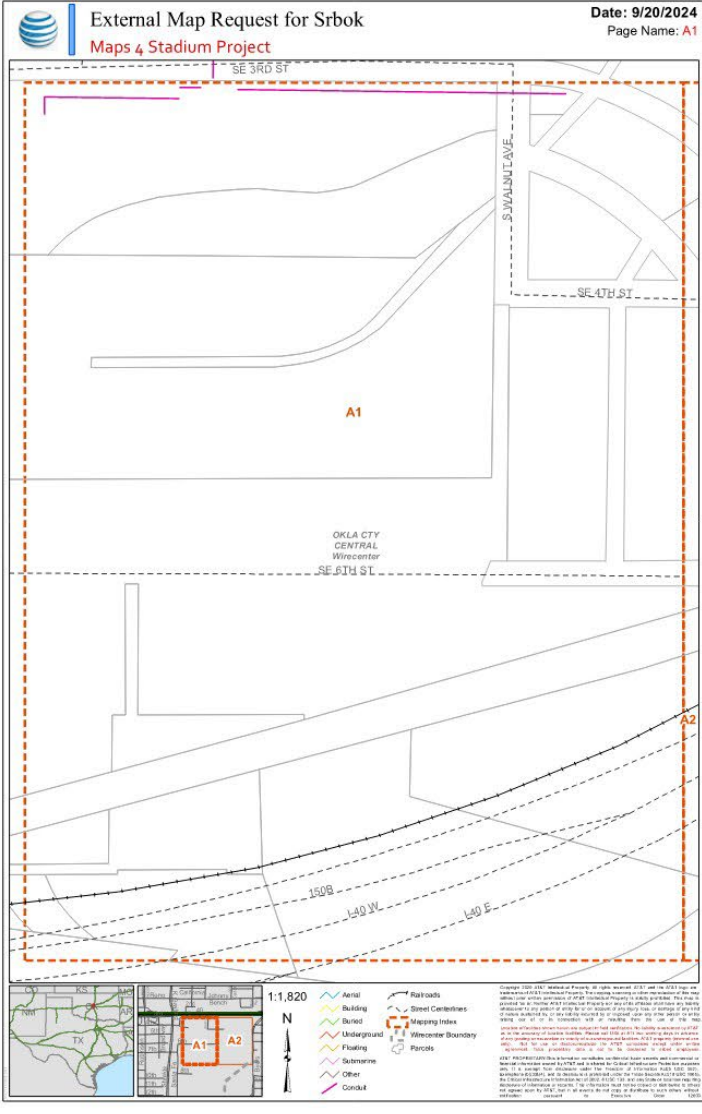
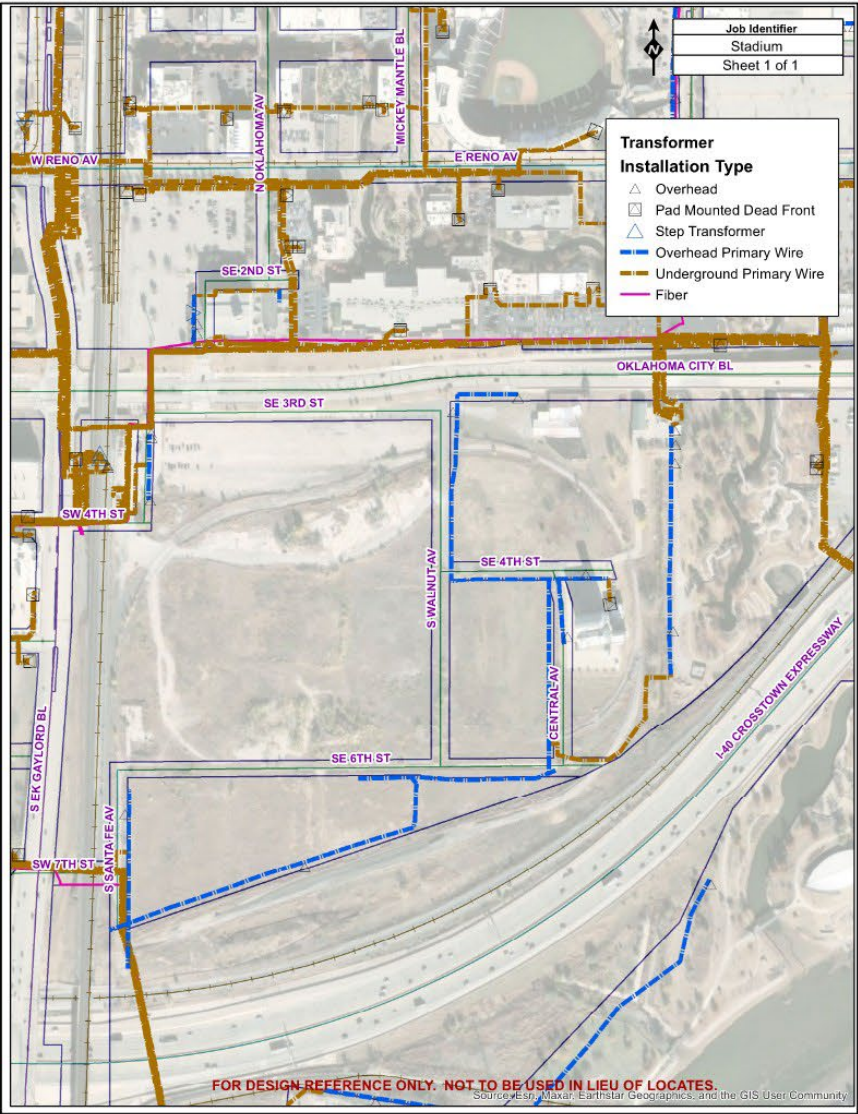
Site Evaluation - **Survey**



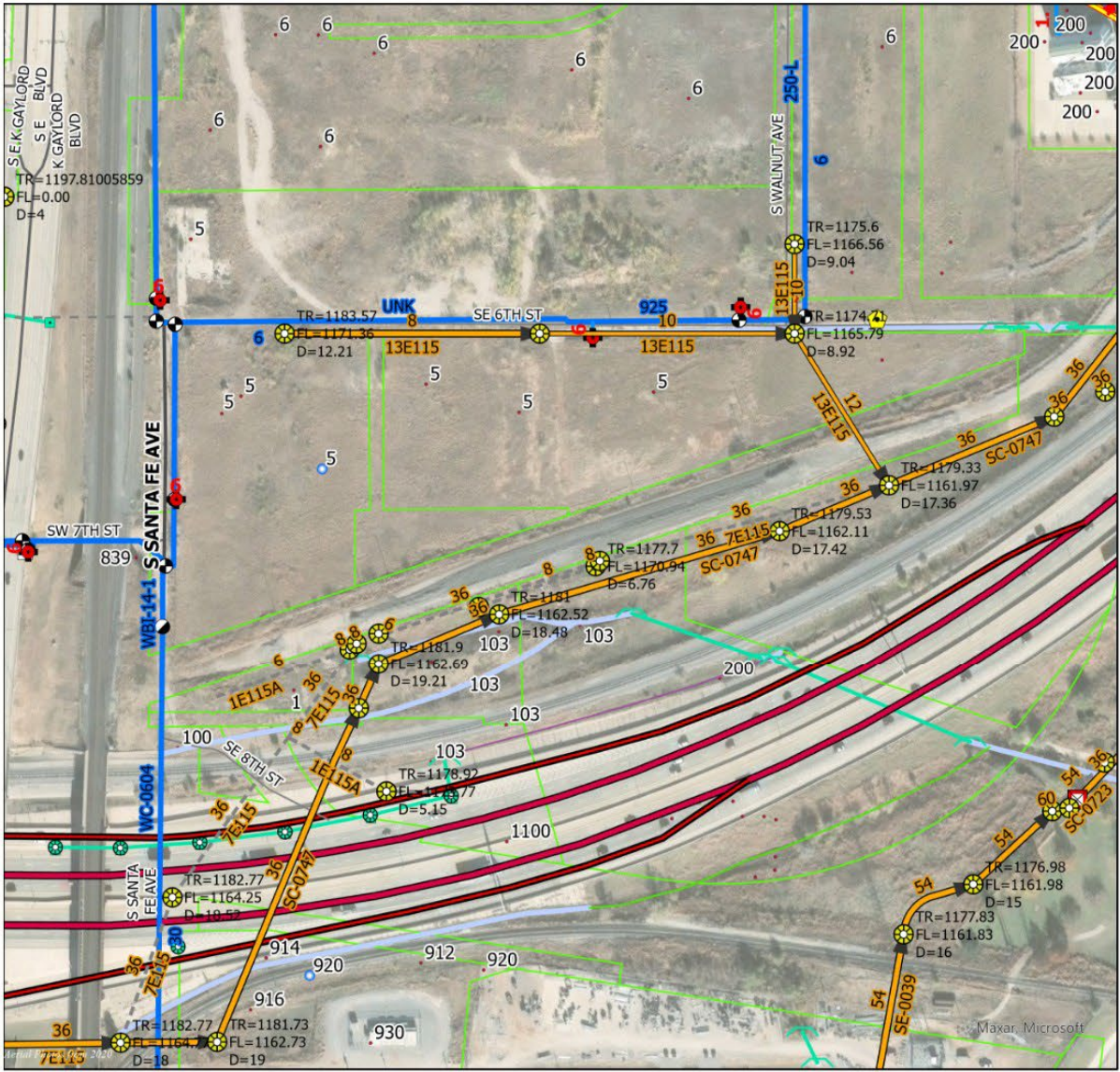
Site Evaluation - Utilities



Site Evaluation - Utilities

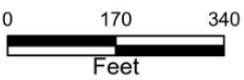


Site Evaluation - Utilities



ATLAS

The City nor any of its Trusts nor any of their employees, officers, or agents warrant or represent that the information or data on this document is accurate or appropriate for use or re-use for any purpose. The user of this document assumes the sole duty and full responsibility for the verification of the information and data contained therein. Any use of reliance upon this document of the information or data contained therein is solely, totally, and exclusively at the users own risk.



Legend

- - - Abandoned/Remove
- Wastewater Main
- - - Abandoned/Remove
- - - Abandoned/Remove
- Wastewater Main
- Fire Hydrant
- - - Abandoned
- Water Main
- Storm Drain

Created By: Christopher M Dillard
Date: 9/17/2024

04/ Next Steps

TASK 1B - PRELIMINARY REPORT

- 180 Days
- Based on **\$53,742,887** Construction Budget
- Develop Design Studies
- Visioning Sessions with Stakeholders
- Produce Model, Drawings, and Renderings
- Prepare and Present Design Report
- Initial Cost Estimate

POPULOUS®