



The City of  
**OKLAHOMA CITY**

**CERTIFICATE OF APPROVAL  
DOWNTOWN DESIGN DISTRICT  
DTCA-24-00063**

**Applicant:**

Ernie Glotta  
Glotta Architecture  
87 Reason Jones Road  
Valley View, TX 76272

**Owner:**

Gary Homsey  
SAAD Enterprises, LLC  
4816 N Classen Blvd  
Oklahoma City, OK 73118

On 10/02/2024, the Planning Department staff received your application for a Certificate of Approval. In accordance with §59-7200 of the Oklahoma City Municipal Code, also known as the Downtown Zoning Ordinance, staff of the Oklahoma City Planning Department has reviewed in detail the application for **1116 N Robinson Ave.** Staff has determined that the following is in conformance with the provisions of the Ordinance:

- 1) **Install brick infill to match existing at the east elevation;**
- 2) **Remove existing fabric awning at the west elevation;**
- 3) **Install new metal awning over the entry at the west elevation; and**
- 4) **Restripe the parking lot.**

Note: All items are elective unless construction is started.

All three (3) attachments must remain together for this document to be valid. Work must be completed within two years of the date of the original approval and must be performed exactly as shown on approved plans.

**Approved:**

10/28/2024

**Effective:**

11/13/2024

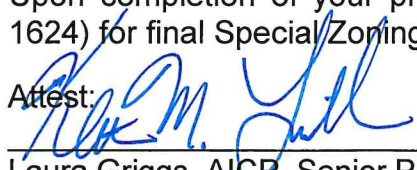
**Expires:**

10/28/2026

**Note:** Work may not commence until after the mandatory 10-working day appeal period starting from the date of approval.

Upon completion of your project, please contact the Planning Department (405-297-1624) for final Special Zoning inspection.

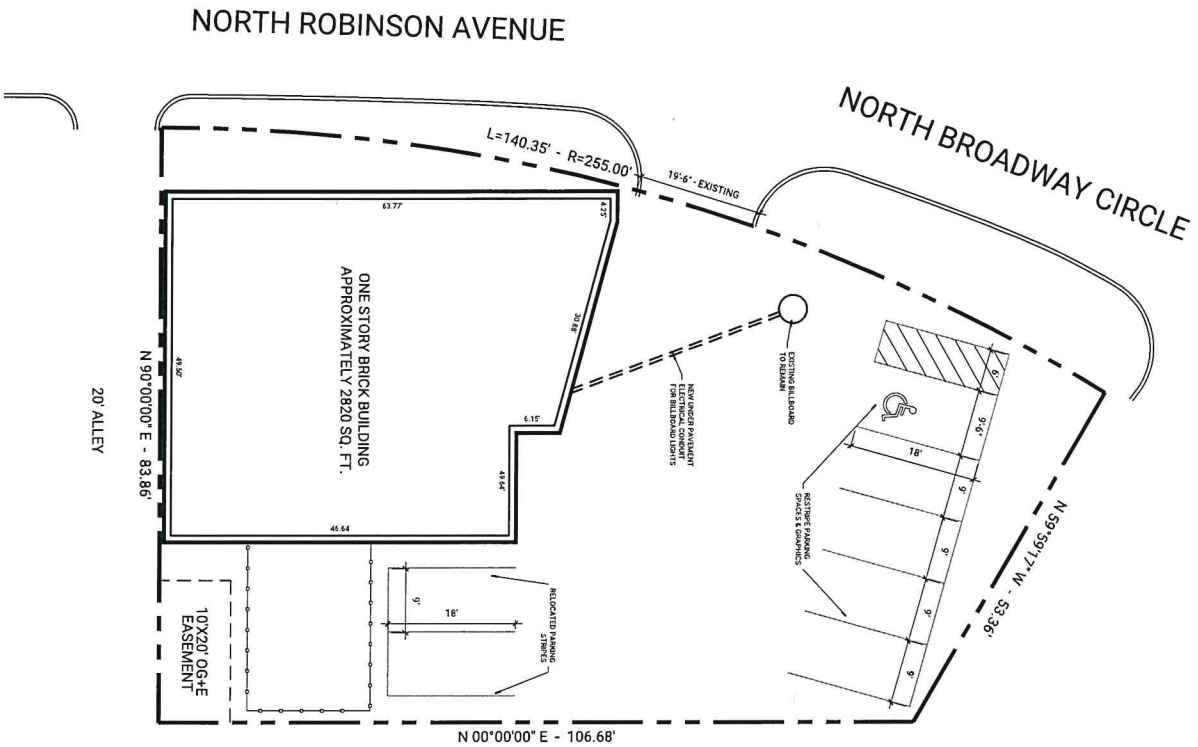
Attest:

  
\_\_\_\_\_  
Laura Griggs, AICP, Senior Planner  
Secretary, Downtown Design Commission

Page 1 of 1

*Your project may require a **permit**. Please check with the **Plan Review** section of the Development Services Department, 8th Floor, 420 W Main St (**405-297-2525**), for details. To obtain a permit, please submit the Certificate of Approval with the original attachments stamped "approved."*

⊕ NORTH  
A1 FLOOR PLAN  
SCALE: 1/8" = 1'-0"



## DESIGN REVIEW CERTIFICATE OF APPROVAL

CA# DTC #24-00063

Approval Date: 10 / 28 / 2024

Expiration Date: 10 / 28 / 2026

Revised Date:     /    /    

Items:      Approved By: DC

With: Condition(s) / Variance

Page 1 of 3

### GENERAL NOTES

1. SEE PLAT FOR INFORMATION ON THE EXISTING BILLBOARD TO REMAIN.
2. SEE PLAT FOR INFORMATION ON THE EXISTING BILLBOARD TO REMAIN.
3. SEE PLAT FOR INFORMATION ON THE EXISTING BILLBOARD TO REMAIN.

A101

Project No. 2407  
Last Revision 28 AUG 2024

SITE  
PLAN

APPROVED  
DATE: 8/26/2024

STATE OF OKLAHOMA  
ARCHITECT

APPROVALS

INTEGRIS **AllSet** Urgent Care  
**DOWNTOWN OKC**  
1116 N. Robinson Avenue  
Oklahoma City, OK 73103  
CONSTRUCTION DOCUMENTS



RENEE LYNN + GLØTTA  
ARCHITECTURE  
214-799-5031  
ernie@glotta.design

**AllSet**  
Urgent Care



## TOILET ACCESSORIES

MARK	DESCRIPTION	MANUFACTURER	MODEL	FINISH	RESPONSIBILITY		COMMENTS	LOCATION											MARK
					FURNISH	INSTALL		101-WAITING	102-TOILET	103-CONCIERGE	104-STAFF LOUNGE	105-DATA CLOSET	106-CORRIDOR	107-EXAM	108-EXAM	109-TOILET	110-ORTH	111-LARGE EXAM	
TA-1	GRAB BAR (42")	BOBRICK	B-6806 X 42	STAINLESS STEEL	C	C	SIDE MOUNTED	X								X			TA-1
TA-2	GRAB BAR (36")	BOBRICK	B-6806 X 36	STAINLESS STEEL	C	C	REAR MOUNTED		X							X			TA-2
TA-3	GRAB BAR (18")	BOBRICK	B-6806 X 18	STAINLESS STEEL	C	C	VERTICAL MOUNTED	X						X	X	X	X		TA-3
TA-4	MIRROR (18" x 36")	BOBRICK	B-290 1836		C	C	WELDED FRAME	X						X	X				TA-4
TA-5	SOAP DISPENSER	GOJO - PURELL	5030-01	WHITE	O		SURFACE MOUNTED, ES4 SOAP	X	X					X	X	X	X	X	TA-5
TA-6	HAND SANITIZER DISPENSER	GOJO - PURELL	5020-01	WHITE	O		REFER TO PLAN FOR LOCATIONS						5	X	X	X	X	X	TA-6
TA-7	PAPER TOWEL DISPENSER	EMOTION	59460A	GRAY	C	C	SURFACE MOUNTED, TOUCHLESS	X						X	X				TA-7
TA-8	PAPER TOWEL DISPENSER	GEORGIA-PACIFIC	56620	STAINLESS STEEL	O		SURFACE MOUNTED, MULTIFOLD		X		X	X	X	X	X	X	X	X	TA-8
TA-9	TOILET TISSUE DISPENSER	COMPACT	56798	STAINLESS STEEL	C	C	SURFACE MOUNTED	X						X					TA-9
TA-10	SANITARY NAPKIN WASTE RECEPTACLE	BOBRICK	B-270	STAINLESS STEEL	C	C	SURFACE MOUNTED	X								X			TA-10
TA-11	SEAT COVER DISPENSER	BOBRICK	B-4221	STAINLESS STEEL	C	C	SURFACE MOUNTED	X								X			TA-11
TA-12	CHANGING STATION	KOALA KARE	KB200-01	GRAY	C	C	SURFACE MOUNTED	X											TA-12
TA-13	ROBE HOOK	BOBRICK	B-76717	BRUSHED STAINLESS STEEL	C	C	SURFACE MOUNTED	X						X	X	X	X		TA-13
TA-14	SHELF	BOBRICK	B-295 x 16	STAINLESS STEEL	C	C	SURFACE MOUNTED							X	X	X	X		TA-14
TA-15	WASTE RECEPTACLE w/o LID	COASTWIDE PROFESSIONAL	CW56429	BLACK PLASTIC	O	C	7 GALLON - 15"H x 14.5"W x 10.35"D	X	X					X	X	X	X	X	TA-15
TA-16	WASTE RECEPTACLE w/ LID	SIMPLE-HUMAN	CW2030	BRUSHED STAINLESS STEEL	O	C	12 GALLON - 26.4" x 15.7"W x 14.2"D	X	X							X			TA-16
TA-17	BIOWASTE TRASH CANS w/ LID	SIMPLE-HUMAN	CW1833	BRUSHED STAINLESS STEEL	O	C	2.6 GALLON - 17.5"H x 11.2"W x 10.6"D							X	X				TA-17
TA-18	SHELF w/ MOP HOLDERS & HOOKS	BOBRICK	B-239 X 34		C	C	WALL MOUNTED												TA-18
TA-19	10" TRASH GRIMMET	MOCKETT	TM10B	SATIN STAINLESS STEEL	C	C	COUNTERTOP MOUNTED	X						X	X	X	X	X	TA-19
TA-20	MOP & BROOM HOLDER	BOBRICK	B-223 X 24	SATIN STAINLESS STEEL	C	C	VERIFY LOCATION w/ OWNER										X		TA-20

NOTES:  
DO NOT MOUNT SOAP AND HAND SANITIZER DISPENSERS ABOVE OR WITHIN 9" HORIZONTALLY OF ELECTRICAL DEVICES (OUTLETS, SWITCHES, ETC.)  
HAND SANITIZERS TO BE LOCATED BY OWNER AT PUNCH WALK  
PROVIDE CONCEALED BLOCKING FOR ALL SURFACE MOUNTED / BRACED ITEMS.  
REFERENCE MANUFACTURER'S CUT SHEETS FOR ROUGHIN DIMENSIONS  
REFERENCE ACCESSIBLE STANDARDS AND MANUFACTURER'S CUT SHEETS FOR MOUNTING HEIGHTS

## GENERAL NOTES

- DIMENSIONS SHOWN ARE FROM FINISH WALL TO FINISH WALL, U.N.O.
- ALL PARTITIONS TO BE A3 UNLESS NOTED OTHERWISE.
- UNDER NO CIRCUMSTANCES IS THE CONTRACTOR TO FURNISH OR INSTALL ANY MATERIALS, ADHESIVES OR PRODUCTS CONTAINING ASBESTOS.
- ALL SALVAGEABLE MATERIALS SCHEDULED TO BE DEMOLISHED, SUCH AS DOORS, FRAMES, HARDWARE, MILLWORK AND OTHER RE-USABLE ITEMS ARE TO BE RETURNED TO BUILDING STOCK, U.N.O. COORDINATE ALL SALVAGE AND STORAGE OF THESE ITEMS w/ BUILDING MANAGEMENT.
- VERIFY CONSTRUCTION TYPE OF ALL EXISTING DEMISING WALLS AT PERIMETER OF LEASE SPACE PRIOR TO BID. ENSURE ALL DEMISING WALLS ARE EXTENDED TO DECK w/ SOUND INSULATION IN ENTIRE WALL CAVITY. ALL NEW DEMISING WALLS ARE TO MATCH CONSTRUCTION TYPE, MEETING THE REQUIREMENTS OF BUILDING STANDARDS.
- ALL WALL ANGLES ARE EITHER 90 DEGREES OR 45 DEGREES UNLESS NOTED OTHERWISE.
- CONTRACTOR TO CHALK WALL LAYOUT ON FLOOR SLAB PRIOR TO BEGINNING OF CONSTRUCTION. CONTRACTOR TO NOTIFY ARCHITECT IMMEDIATELY OF ANY DISCREPANCIES IN THE LAYOUT FROM THE CONSTRUCTION PLAN. CONTRACTOR SHALL NOT BEGIN CONSTRUCTION WITHOUT APPROVAL OF WALL LAYOUT BY THE ARCHITECT.
- CONTRACTOR IS RESPONSIBLE FOR FIELD DIMENSIONS OF ALL MILLWORK, GLASS, DOOR OPENINGS, ETC.
- ANY CONFLICTS IN DIMENSIONS DUE TO FIELD CONDITIONS, TYPOGRAPHICAL ERRORS, OR OTHER SIMILAR CONDITIONS, ARE TO BE IMMEDIATELY BROUGHT TO THE ATTENTION OF THE ARCHITECT PRIOR TO COMMENCEMENT OF WORK.
- AT LOCATIONS WHERE PARTITIONS ADJOIN WITH WINDOW FRAMING, CENTERLINE OF PARTITIONS SHALL ALIGN WITH CENTERLINE OF MULLIONS, U.N.O. PROVIDE CLOSURE STRIP/SOUND SEAL AT THESE LOCATIONS. DO NOT PENETRATE CURTAIN WALL OR EXTERNAL WINDOW SYSTEM WITH SCREWS, AND/OR MECHANICAL FASTENERS.
- NEW CONSTRUCTION MEETING IN THE SAME PLAN AS EXISTING SHALL BE FLUSH WITH NO VISIBLE JOINTS SHOWING IN THE FINAL PRODUCT.
- ALL DOORS SHALL HAVE MANEUVERING CLEARANCES AS REQUIRED BY NATIONAL AND LOCAL ACCESSIBILITY CODES AND STANDARDS.
- WHERE IT IS DEEMED NECESSARY TO ENSURE STABILITY, CONTRACTOR SHALL PROVIDE ADDITIONAL BRACING, ANCHORING, AND/OR BLOCKING IN STUD PARTITIONS. ALL WOOD/BLOCKING SHALL BE FIRE-TREATED AS REQUIRED.
- REFER TO EQUIPMENT PLAN FOR ADDITIONAL LOCATIONS AND INFORMATION ON REQUIRED BLOCKING.
- FURR-OUT CORE WALLS, DEMISING WALLS AND COLUMNS AT ALL LOCATIONS WHERE ELECTRICAL, TELEPHONE OR PLUMBING OCCUR. REFER TO PLANS FOR LOCATIONS AND COORDINATE w/ MEP PLANS & SPECIFICATIONS.
- ALL MILLWORK/WOODWORK IS TO BE FABRICATED IN ACCORDANCE w/ ARCHITECTURAL WOODWORK INSTITUTE CUSTOM U.N.O.
- DO NOT RE-USE EXISTING PLUMBING UNLESS EXISTING IS WITHIN 24" OF NEW SINK OR FIXTURE.
- VERIFY FLOOR PENETRATIONS WITH ARCHITECT AND LANDLORD PRIOR TO INSTALLATION. ALL PENETRATIONS TO BE SEALED PER APPLICABLE CODE.
- WHERE NOTED ON PLAN, INSTALL 1/2" GRADE NON-COMBUSTIBLE 48"W x 96"H PLYWOOD BACKBOARD FOR TELEPHONE, DATA, SECURITY, ETC. EQUIPMENT. PLYWOOD SHALL BE SMOOTH SQUARE AND HAVE EDGES FILLED AND Sanded SMOOTH PAINT BACKBOARD TO MATCH EXISTING FINISHES, LEAVING ONE IDENTIFYING LABEL EXPOSED. INSTALL PLYWOOD AT 6" F.F. U.N.O.
- PROVIDE NEW EXISTING CABINETS (PER CODE) VERIFY LOCATIONS w/ FIRE MARSHAL. CONTRACTOR TO PROVIDE CUT SHEET DETAILS AND LOCATIONS FOR APPROVAL.
- ALL DOORS SHALL HAVE MANEUVERING CLEARANCES AS REQUIRED BY NATIONAL AND LOCAL ACCESSIBILITY CODES AND STANDARDS.
- VERIFY THAT ALL ITEMS WHICH PROTRUDE FROM THE WALL INTO THE CIRCULATION PATH AND HAVE A LEADING EDGE ABOVE 32" SHALL BE GATED TO 4" MAXIMUM PROJECTION FROM THE WALL UP TO A HEIGHT OF 80" A.F. THIS INCLUDES WALL MOUNTED TELEVISION SCREENS AND ANY WORK PROVIDED BY THE OWNER AND/OR THIRD PARTY.
- INSTALL BACKER BOARD ON WALLS TO RECEIVE TIE. REFER TO FINISH PANEL FOR LOCATIONS.

## REQUIRED VENDORS

- ALL BIDDERS ARE TO SOLICIT PROPOSALS FOR THE FOLLOWING SCOPE OF WORK FROM PRE-APPROVED VENDORS. A COMPLETE LIST OF APPROVED COMPANIES WILL BE PROVIDED BY THE PROJECT MANAGER.
- DOORING WORK - LANDLORD'S APPROVED CONTRACTOR
  - FIRE SPRINKLER - LANDLORD'S APPROVED CONTRACTOR
  - FIRE ALARM - LANDLORD'S APPROVED CONTRACTOR
  - LOW VOLTAGE CABLEING - OWNER'S APPROVED VENDOR
  - SECURITY AND ACCESS CONTROL - OWNER'S APPROVED VENDOR

## INTERIOR MESSAGE SCHEDULE

REFER TO PLAN FOR LOCATIONS &amp; QUANTITIES

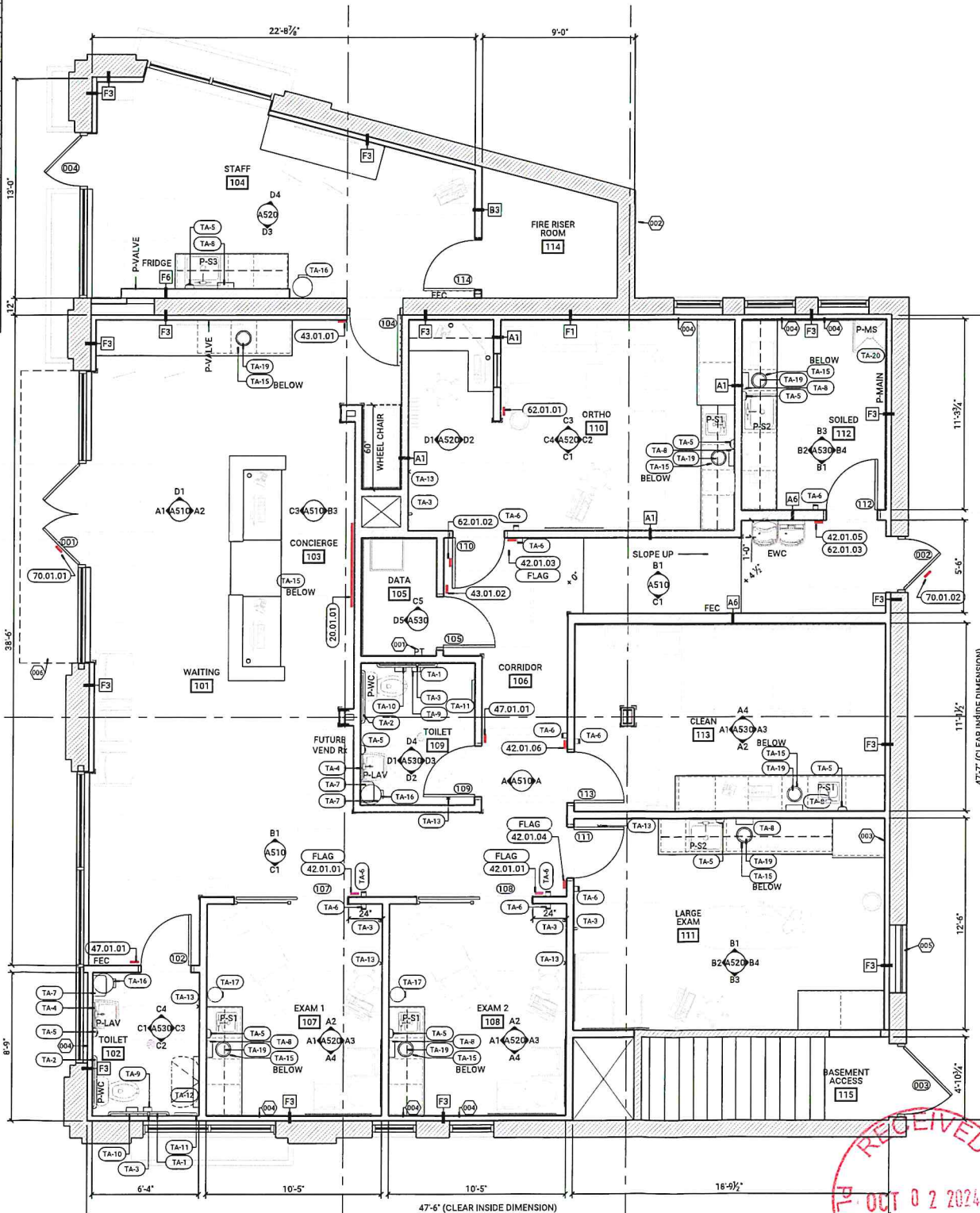
SIGN NUMBER	ROOM NUMBER	LOCATION PLAN	W/S	LEGEND	REMARKS
Sign Type 20: Entry Identification - Logo/Lettering					
(20.01.01)	103	1 / A 201	-	(Logo)	Qty: 1 Style A
(mount top of AllSet letters @ 82") Size C					
Sign Type 42: Public Tactile Room Plaque					
(42.01.01)	107	1 / A 201	-	EXAM 1	Qty: 1
(42.01.02)	108	1 / A 201	-	EXAM 2	Qty: 1
(42.01.03)	110	1 / A 201	-	ORTH	Qty: 1
(42.01.04)	111	1 / A 201	-	PROCEDURE	Qty: 1
(42.01.05)	112	1 / A 201	-	SOILED	Qty: 1
(42.01.06)	113	1 / A 201	-	CLEAN	Qty: 1
Sign Type 43: Back-of-House Room Plaque					
(43.01.01)	104	1 / A 201	-	STAFF	Qty: 1
(43.01.02)	105	1 / A 201	-	IT	Qty: 1
Sign Type 47: Pictogram Plaque					
(47.01.01)	102	1 / A 201	-	(R4)	Qty: 2 Style A
	109			ACCESSIBLE RESTROOM	
Sign Type 62: Warning / Restriction Sign					
(62.01.01)	110	1 / A 201	-	(RAD) Caution	Qty: 1 Size B
If you are pregnant or unsure, please notify staff immediately.					
(62.01.02)	110	1 / A 201	-	(RAD) Caution	Qty: 1 Size A
(62.01.03)	112	1 / A 201	-	Radiation Area	Qty: 1 Size A
				Biohazard	
Sign Type 70: Clinic Vinyl Entry Door Signage					
(70.01.01)	101	1 / A 201	a.	(No smoking message)	Qty: 1
			b.	(Hours)	
			c.	(L999)	
(70.01.02)	106	1 / A 201	-	Not an Entrance	Qty: 1
Sign Type: ROOM SIGNAL FLAG					
(FLAG)	106	1 / A 201	-	Located on corridor side, outside EXAMS, LARGE EXAM & ORTHO rooms.	Qty: 4

## PLAN ABBREVIATIONS

FEC	FIRE EXTINGUISHER AND STAINLESS STEEL SEMI-RECESSED CABINET.
P-EWC	ELKAY BOTTLE FILLING STATION & BLEVEL ADA COOLER. INCLUDE CANE APRON AND IN-WALL CARRIER. (EZSTLWWSK / LKAPREZL / MLP200).
P-LAV	WALL HUNG LAVATORY.
P-MS	MAIN WATER SHUTOFF VALVE IN RECESSED BOX (COVER LABELED).
P-S1	MOP SINK AND FAUCET w/ HOSE AND HOSE HOLDER.
P-S2	UNDERMOUNT EXAM ROOM SINK AND FAUCET.
P-S3	UNDERMOUNT EXAM SINK AND FAUCET.
P-S4	DROP-IN STAFF LOUNGE SINK AND FAUCET.
P-MAIN	MAIN WATER SHUTOFF VALVE IN RECESSED BOX (COVER LABELED).
P-VALVE	1/2" C.W. VALVE IN RECESSED BOX.
P-WC	PRESSURE-ASSISTED TANK TOILET

## KEYED NOTES

- 001 PLAN TUBE, REFER TO DETAIL C4 / A710
- 002 EXISTING EXTERIOR FROST-PROOF HOSE BIB
- 003 INSTALL WALL MOUNTED HOOK WITHIN CABINET. VERIFY HEIGHT WITH OWNER.
- 004 INSTALL 12"W x 8"H WHITE PAINTED METAL LOUVERED VENT (12" TO BOTTOM) UNDER WINDOWS. LEAVE OPENING ABOVE CEILING. OMIT INSULATION FULL HEIGHT. INSTALL BLACK OUT FILM TO INSIDE FACE OF GLASS.
- 005 INFILL EXISTING OPENING WITH BRICK (UNPAINTED) TO MATCH EXISTING MASONRY. PROVIDE SAMPLE FOR REVIEW PRIOR TO ORDERING.
- 006 ENTRY CANOPY ABOVE. REFER TO EXTERIOR ELEVATIONS.

01 FLOOR PLAN  
Scale: 1/4" = 1'-0"

±2,578 SF

AllSet  
Urgent CareRENEE GLØTTA  
LYNN +  
ARCHITECTURE214-799-5031  
© Renee Lynn & Gløtta PLLCINTEGRIS AllSet Urgent Care  
DOWNTOWN OKC  
1116 N. Robinson Avenue  
Oklahoma City, OK 73103  
CONSTRUCTION DOCUMENTSFLOOR  
PLANProject No. 2407  
Date 26 AUG 2024  
Last Revision

A 201



SECTION 10 5020  
ALUMINUM DOOR CANOPY

PART 1 - GENERAL

- 1.1 SUMMARY  
A. Section Includes: Building supported, pre-engineered metal canopies including fascia channels, decking, tension rods and attachment hardware.
- 1.2 REFERENCES  
A. Aluminum Association (AA) DAF 45 - Designation System for Aluminum Finishes.  
B. American Architectural Manufacturers Association (AAMA): 2603 - Voluntary Specification, Performance Requirements and Test Procedures for Pigmented Organic Coatings on Architectural Extrusions and Panels.  
C. American Society of Civil Engineers (ASCE) 7 - Minimum Design Loads for Building and Other Structures.  
D. ASTM International (ASTM)  
1. B221 - Standard Specification for Aluminum and Aluminum-Alloy Extruded Bars, Rods, Wire, Profiles and Tubes.  
2. B429 - Standard Specification for Aluminum-Alloy Extruded Pipe and Tube.
- 1.3 SYSTEM DESCRIPTION  
A. Design Requirements: Design canopy system including associated fasteners, anchors and blocking to withstand standards for wind pressure, snow load and drifting snow load in accordance with current adopted Building Code including adopted amendments of the local municipality.
- 1.4 SUBMITTALS  
A. Shop Drawing Submittal for Review: Indicate system components, dimensions, attachments and accessories. Furnish full engineering calculations on entire assembly.  
B. Samples Submittal for Review:  
1. 3x3 inch coating samples in specified color.  
2. 6 inch long fascia extrusion sample showing profile and standard finish  
3. 6 inch decking samples showing profile and standard finish.
- 1.5 QUALITY ASSURANCE  
A. Installer Qualifications: Minimum 5 years experience in installation of MASA products.

PART 2 - PRODUCTS

- 2.1 MANUFACTURER  
A. Contract Documents are based on:  
Extrudeck Series  
MASA Architectural Canopies  
21 Randolph Ave.  
Avenel, NJ 07001  
800-761-7446  
architecturalcanopies.com
- B. Acceptable alternates: Other manufacturers may bid only after written approval of the Architect. Interested manufacturers must furnish full details of proposed product, engineering calculations on all sections involved, physical samples of all shapes and finishes, a list of installations similar in size and design, and must have a minimum of five years experience in manufacturing and installing canopy systems.
- 2.2 MATERIALS  
A. Aluminum Extrusions: ASTM B221 & ASTM B429 6063-T5 alloy and temper.  
B. Hardware: All fasteners shall be stainless steel for corrosion resistance.
- 2.3 COMPONENTS  
A. Framing:  
1. Type: Extruded aluminum "J" channel fascia.  
2. Size: 8" x 0.125"  
B. Canopy Supports: Extruded Aluminum Canopy Support "I" Beam.  
C. Decking: 3" x 6" x 0.090" Interlocking Extruded aluminum flat soffit decking (as selected from full line of MASA decking options).  
D. Attachment: 1.050" diameter steel hanger rod, prefinished to match canopy.  
E. Custom Fascia Profiles: 8" Industrial  
F. Other Components as indicated or as required for system attachment and performance.
- 2.4 FABRICATION  
A. Fabricate canopy system in accordance with approved Shop Drawings  
B. Kit canopies to be mechanically assembled with shear stress strength as per engineering. Pre-assembled canopies are shop welded by MASA approved personnel.  
C. Drainage system to be concealed type. Covered surfaces direct water to field drilled drain, to be coordinated at site.
- 2.5 FINISHES  
Aluminum Powder Coat Finish:  
1. Pre-Treatment: Pre-treat to ASTM D1730 type B, Method 5 using a multi stage chromate process or an approved chrome-free pretreatment process approved by powder coating manufacturer for optimized weather resistance.  
2. Finish Coat: AAMA 2603 Thermosetting Polyester Resin-based Powder.  
3. Source Tiger Dylac powder coating or equivalent.  
4. Color to be selected by architect from full line of MASA color range.

PART 3 - EXECUTION

- 3.1 FIELD DIMENSIONS  
Field verify all dimensions of supporting structure at site of installation prior to fabrication.
- 3.2 INSTALLATION  
A. Install in accordance with manufacturer's instructions and approved Shop Drawings.  
B. Furnish and install all blocking and structural support.  
C. Install components plumb and level in proper plane, free from warp and twist.  
D. Anchor system to building components; provide adequate clearance for movement caused by thermal expansion and contraction and wind loads.
- 3.3 ADJUSTING  
A. Touch up minor scratches and abrasions on finished surfaces to match original finish.  
B. Clean with mild, non-abrasive solution and a cotton cloth under low pressure.

END OF SECTION

DESIGN REVIEW  
CERTIFICATE OF APPROVAL

CA# DTCA-24-00063

Approval Date: 10 / 28 / 2024

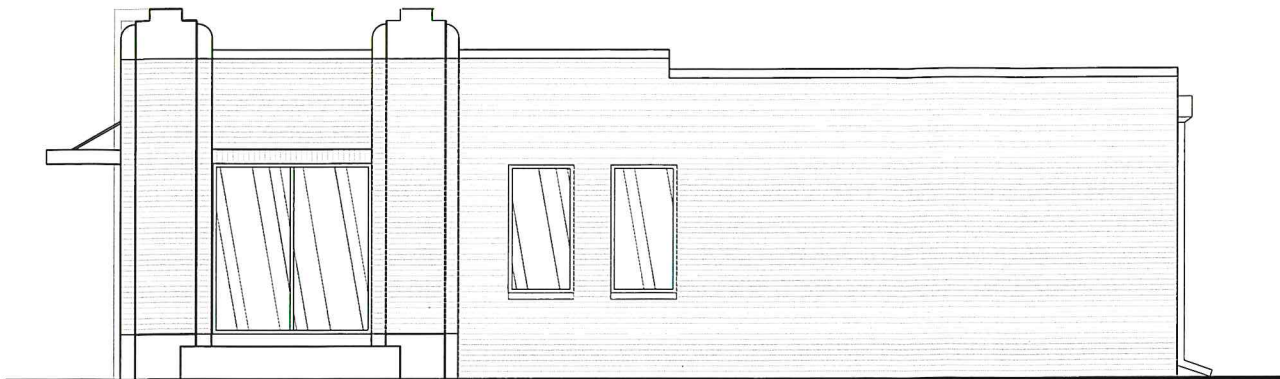
Expiration Date: 10 / 28 / 2026

Revised Date:   /  /  

Item:    Approved By: DL

With Condition(s) / Variance

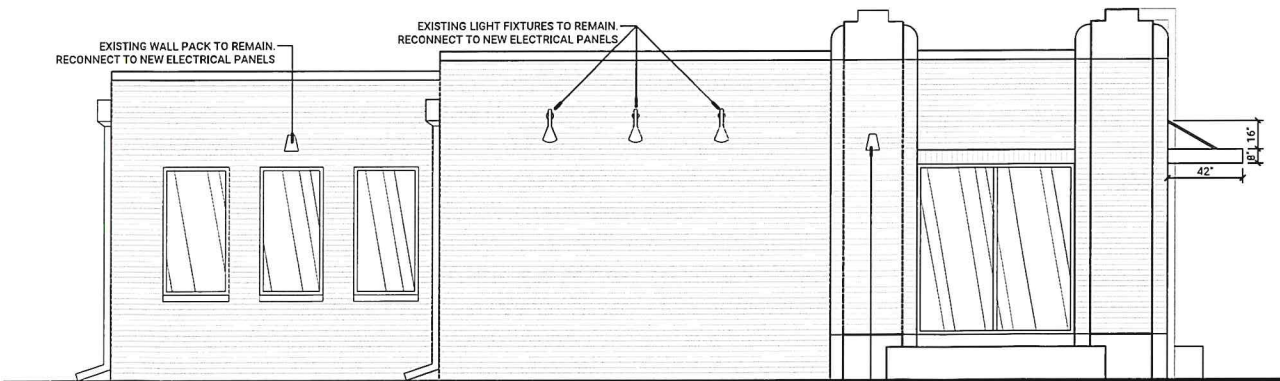
Page 3 of 3



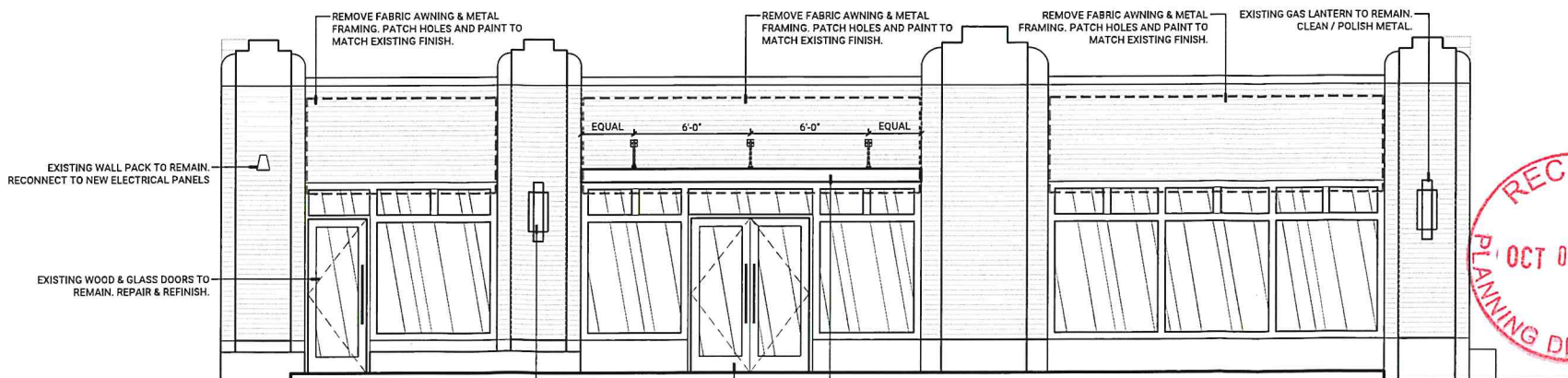
4 SOUTH ELEVATION  
SCALE 3/8" = 1'-0"



3 EAST ELEVATION  
SCALE 3/8" = 1'-0"



2 NORTH ELEVATION  
SCALE 3/8" = 1'-0"



1 WEST ELEVATION  
SCALE 1/4" = 1'-0"

AllSet  
Urgent Care  
INTEGRIS  
HEALTH

RENEE GLÖTTA  
LYNN +  
ARCHITECTURE  
ernie@glotta.design



214-799-5031  
© Renee Lynn & Glotta, PLLC

INTEGRIS AllSet Urgent Care  
DOWNTOWN OKC  
1116 N. Robinson Avenue  
Oklahoma City, OK 73103  
CONSTRUCTION DOCUMENTS



2407-A 301 EXTERIOR ELEVATIONS DWG

EXTERIOR  
ELEVATIONS

Project No. 2407  
Date 26 AUG 2024  
Last Revision

A 301