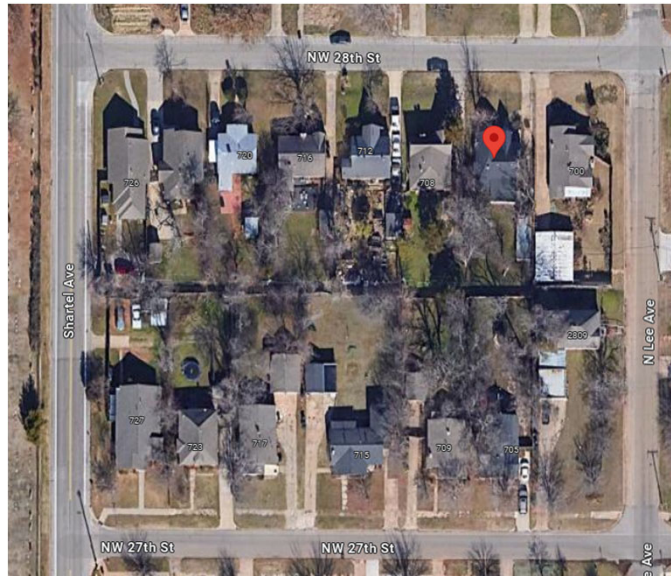


HPCA-24-00032

704 NW 28th Street



Aerial

1

HPCA-24-00032

704 NW 28th Street



Front (North) Facade

2

HPCA-24-00032

704 NW 28th Street



Northeast Corner

3

HPCA-24-00032

704 NW 28th Street



Northwest Corner

4

HPCA-24-00032

704 NW 28th Street



Wood Window on West Elevation

5

HPCA-24-00032

704 NW 28th Street



Wood Window on West Elevation

6

HPCA-24-00032

704 NW 28th Street



Metal Storm Windows on West Elevation

7

HPCA-24-00032

704 NW 28th Street



Deterioration and Wood Rot at Missing Windows on West Elevation

8

HPCA-24-00032

704 NW 28th Street



Windows and Storm Windows on West Elevation and Evidence of Deterioration
Notice Original Mortar Joints Above and Various Repair Below

9

HPCA-24-00032

704 NW 28th Street



Window Set Opening at West Elevation and Various Joint Repair

10

HPCA-24-00032

704 NW 28th Street



View of Deterioration Beyond Opening at West Elevation

11

HPCA-24-00032

704 NW 28th Street



West Elevation Looking North

12

HPCA-24-00032

704 NW 28th Street



West Elevation – chimney

13

HPCA-24-00032

704 NW 28th Street



East Elevation

14

HPCA-24-00032

704 NW 28th Street



East Elevation

15

HPCA-24-00032

704 NW 28th Street



East Elevation, Notice Various Repointing

16

HPCA-24-00032

704 NW 28th Street



East Elevation

17

HPCA-24-00032

704 NW 28th Street



East Elevation

18

HPCA-24-00032

704 NW 28th Street



East Elevation

19

HPCA-24-00032

704 NW 28th Street



East Elevation

20

HPCA-24-00032

704 NW 28th Street



Front (North) Facade

21

HPCA-24-00032

704 NW 28th Street



Front (North) Façade; Notice Methods of Brick Installation that Contribute to Architectural Detail

22

HPCA-24-00032

704 NW 28th Street



Front (North) Facade

23

HPCA-24-00032

704 NW 28th Street



Front (North) Facade

24

HPCA-24-00032

704 NW 28th Street



Front (North) Facade

25

HPCA-24-00032

704 NW 28th Street



Front Entry; Notice Brick Details

26

HPCA-24-00032

704 NW 28th Street



Front Entry

27

HPCA-24-00032

704 NW 28th Street



Front Entry; Notice Concrete Cap at Pier While Missing at Row

28