

# RESOLUTION

WHEREAS, the final plat of Kingsridge Lake Estates Phase 2 has been submitted to the Council of The City of Oklahoma City for acceptance of the dedications contained in said plat; and

WHEREAS, the Council determines that said dedications should be accepted, and filed in the Office of the Clerk of The City of Oklahoma City.

NOW, THEREFORE, BE IT RESOLVED that the Mayor and City Clerk are directed to execute this acceptance of the dedications contained in said plat.

ADOPTED by the Council and SIGNED by the Mayor of The City of Oklahoma City, Oklahoma, on this 3RD day of DECEMBER, 2024.

ATTEST:

Amy K Simpson  
CITY CLERK



David Holt  
MAYOR

REVIEWED for form and legality.

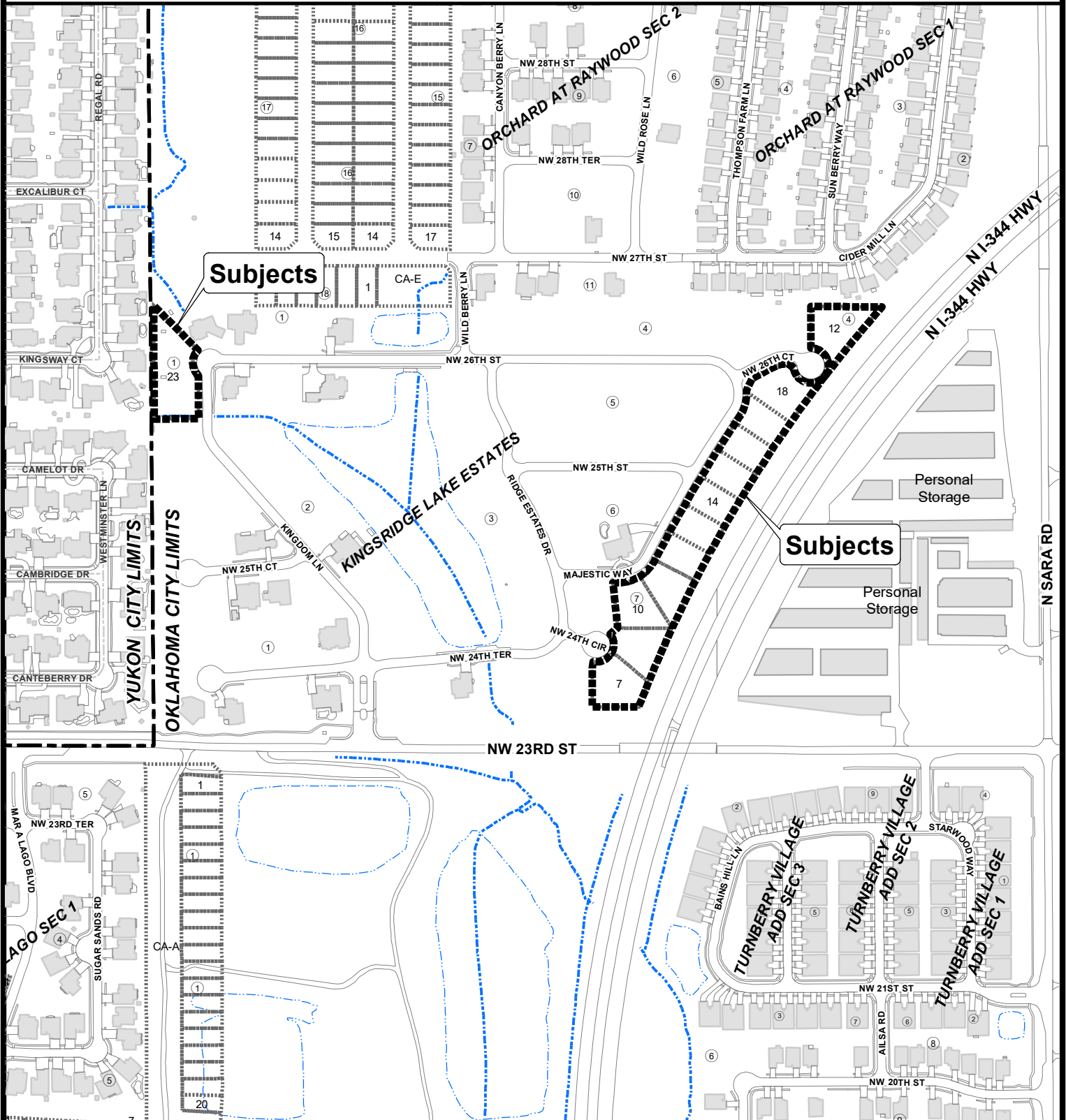
Jill Burnett  
ASSISTANT MUNICIPAL COUNSELOR

Case No: C-7685

Final Plat of Kingsridge Lake Estates Phase 2

Developer: KRLE, LLC

Engineer: Johnson & Associates



The City of  
OKLAHOMA CITY

Final Plat Application



0 200 400  
Feet