

# M4-TS020 MAPS 4 Sidewalks and Related Amenities Phase 2A

## Preliminary Engineering Report Presentation

September 2024

MAPS4



MAPS4



# Project Overview

- Follows the intent of Bike WalkOKC Masterplan
- 3 areas identified for M4-TS020 MAPS 4 Sidewalks and Related Amenities Phase 2A
  - Lyrewood Lane (West Area)
  - NW Expressway (Central Area)
  - May Avenue and NW 63<sup>rd</sup> Street (East Area)
- Project Goals
  - Create walkable community
  - Connect people to places
  - Improve pedestrian safety
- Phase 2A budget: \$3,784,600





# Lyrewood Lane (West Area)

- East side of Lyrewood Lane from NW 63<sup>rd</sup> Street to Wilshire Boulevard
- 5,601 linear feet of identified sidewalk in BikeWalkOKC Master Plan
- Pedestrian connections:
  - Multi-family neighborhoods
  - Commercial areas
  - Tulakes Elementary School
  - Six (6) Embark bus stops





# NW Expressway (Central Area)

- South side of NW Expressway from NW 63<sup>rd</sup> Street to Meridian Avenue
- 3,350 linear feet of identified sidewalk in Bike WalkOKC Master Plan
- Pedestrian connections:
  - Bert Cooper Trail
  - New Rapid Bus Transit Stop
  - Commercial Areas





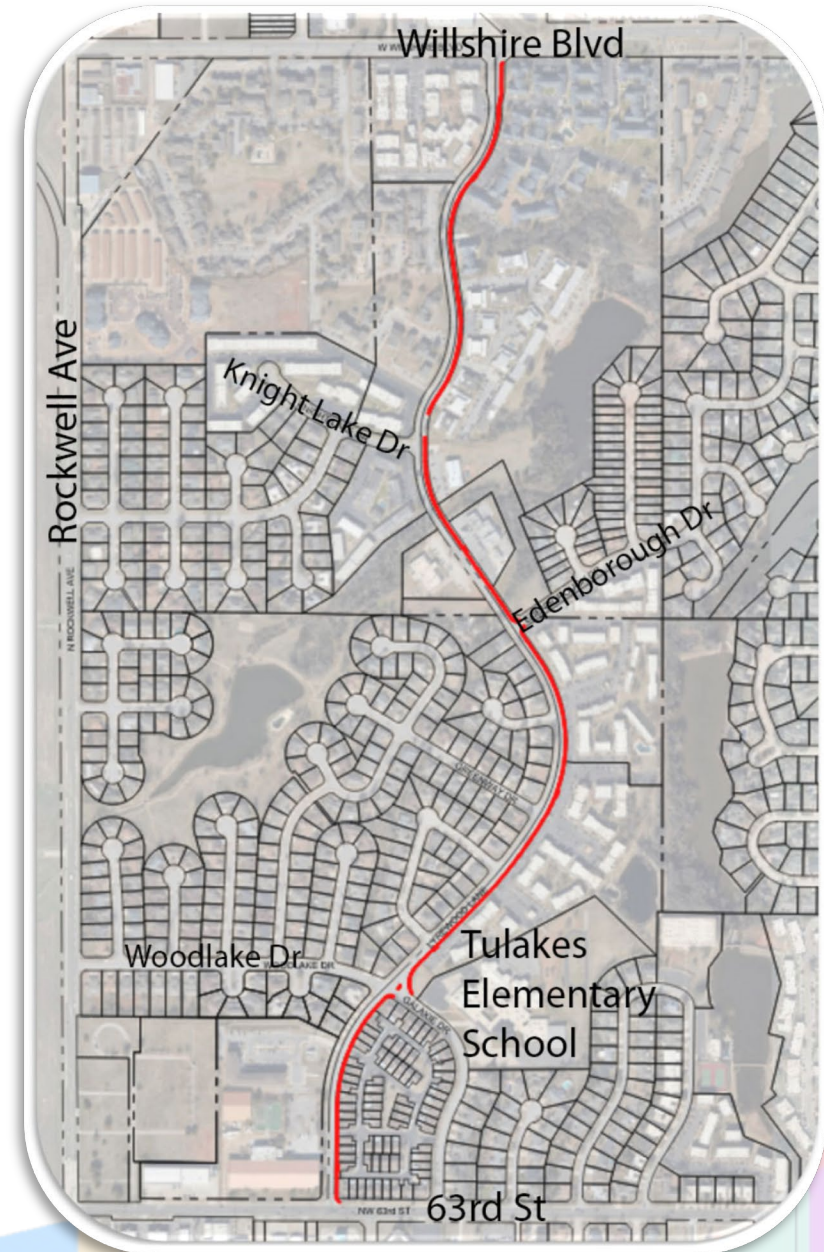
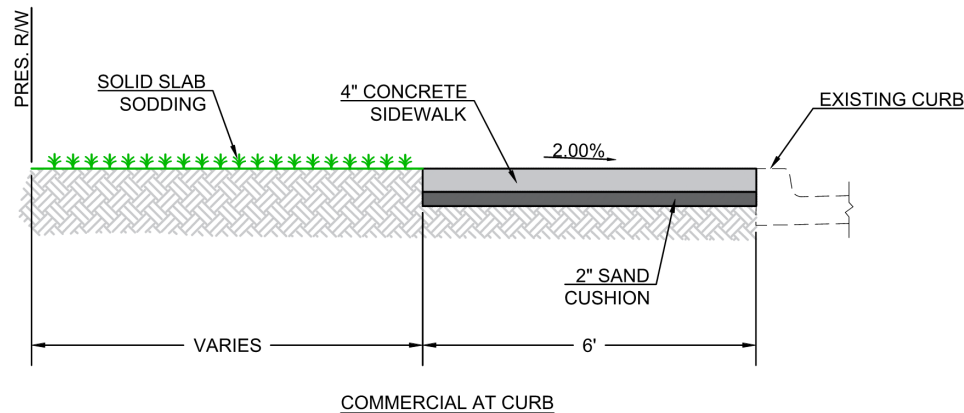
# May Avenue and 63<sup>rd</sup> Street (East Area)

- Area adjacent to May Avenue between NW 63<sup>rd</sup> Street and NW Expressway
  - N Ross Avenue
  - NW 62<sup>nd</sup> Street
  - NW 59<sup>th</sup> Street
  - N Miller Avenue
  - N Villa Avenue
  - NW 55<sup>th</sup> Terrace
- 25,925 linear feet of identified sidewalk in BikeWalkOKC Master Plan
- Pedestrian connections:
  - Multi-family neighborhoods
  - Commercial areas
  - Belle Isle Library
  - Belle Isle Enterprise Middle School
  - Belle Isle Park



# Lyrewood Lane (West Area)

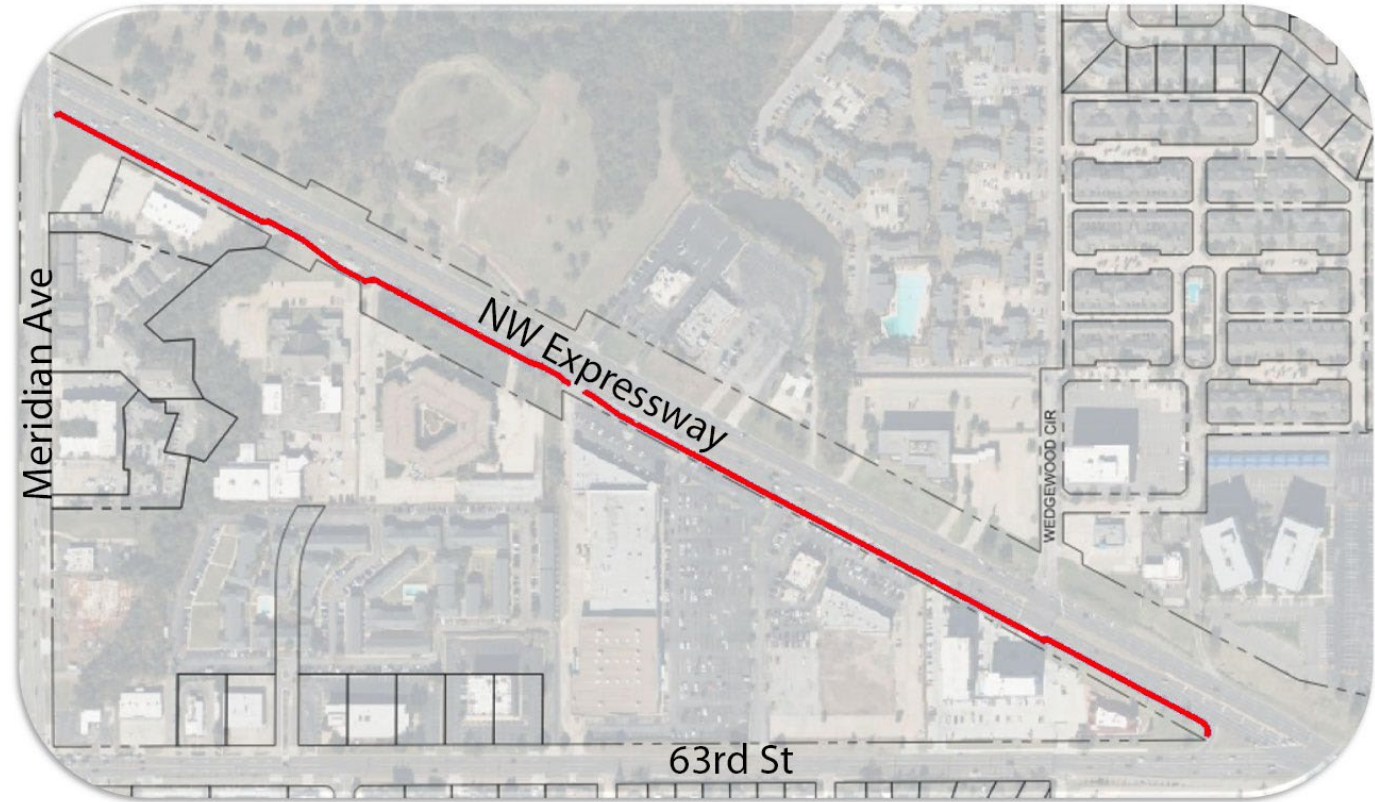
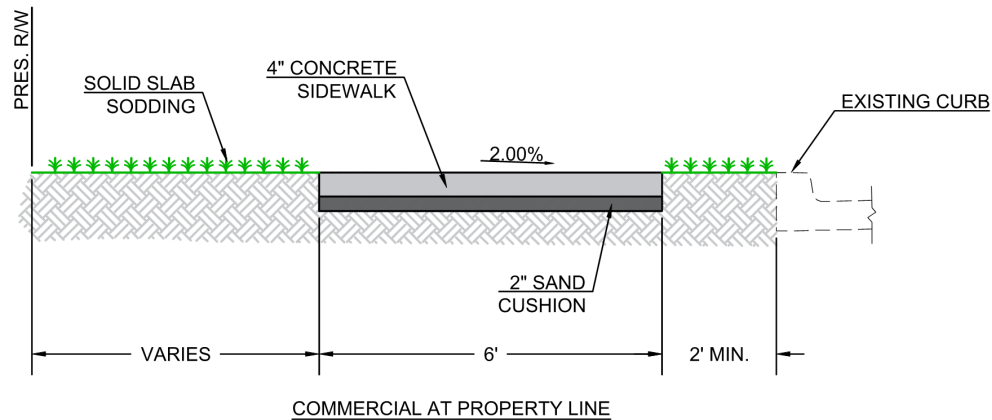
- Continuous connection from Wilshire Boulevard to NW 63<sup>rd</sup> Street
- Sidewalk proposed on east side of Lyrewood Lane
- 6' wide sidewalk at back of curb
- Improved Embark bus stop pads
- Drainage structure repaired and extended





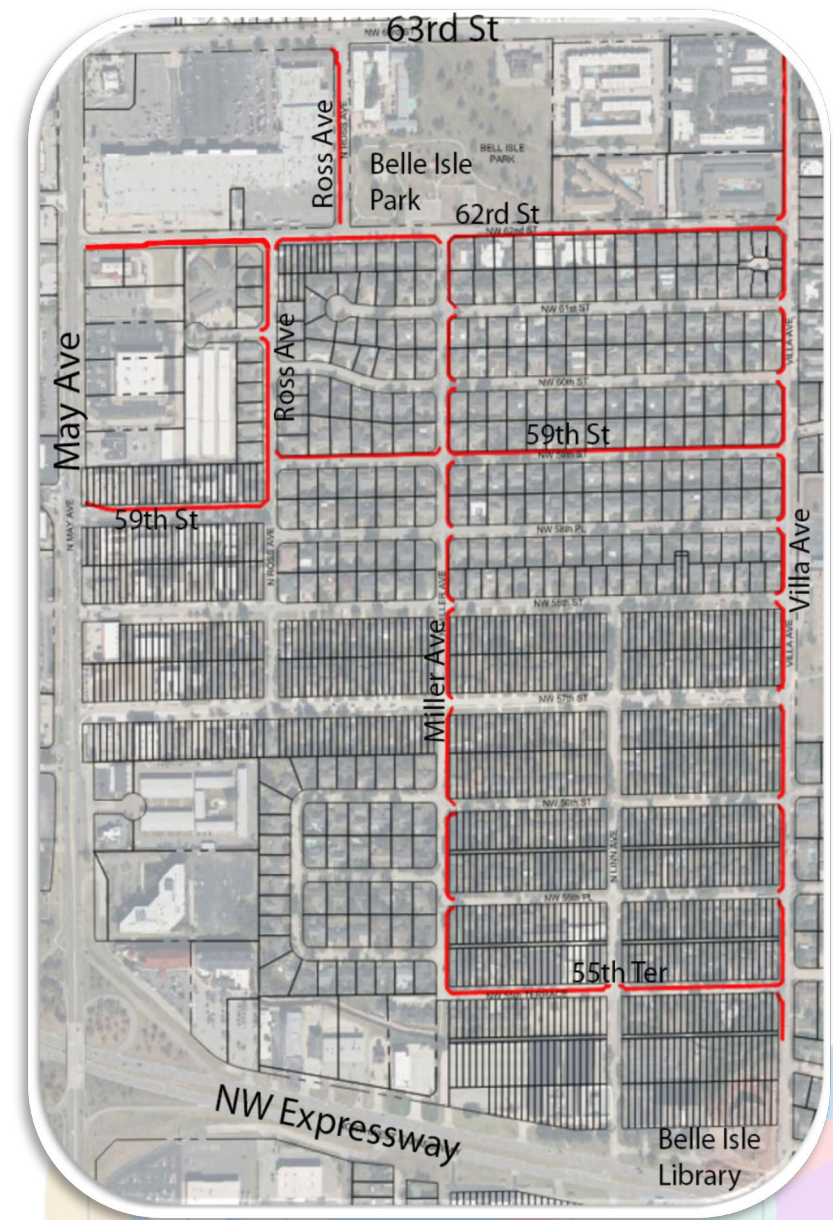
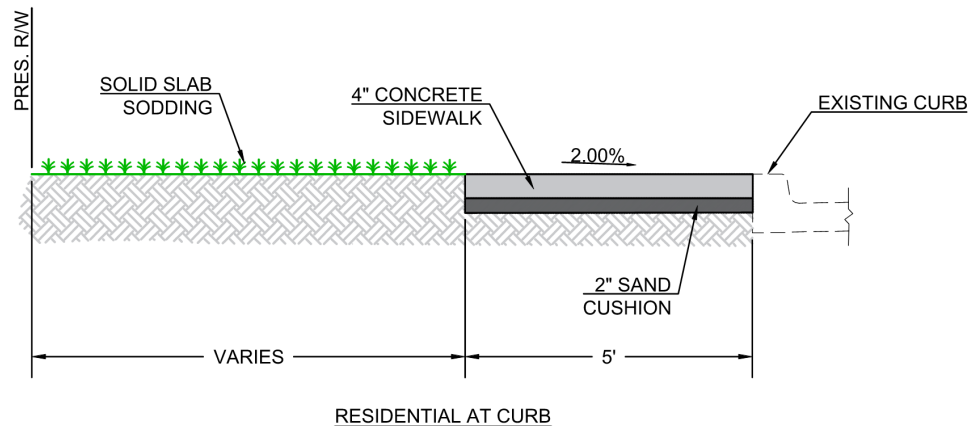
# NW Expressway (Central Area)

- Continuous connection from Meridian Avenue to NW 63<sup>rd</sup> Street
- Sidewalk proposed on south side of NW Expressway
- 6' wide sidewalk along arterial street



# May Avenue and 63<sup>rd</sup> Street (East Area)

- Continuous connections from May Avenue to NW 63<sup>rd</sup> Street and NW Expressway
- Sidewalk proposed on one (1) side of street
- 5' wide sidewalk at back of curb
- Extents added along N Ross Avenue from NW 62<sup>nd</sup> Street to NW 59<sup>th</sup> Street for connection to May Avenue





# Construction Cost

## M4-TS020 MAPS 4 Sidewalks and Related Amenities Phase 2A Recommendation

May Avenue and NW 63 <sup>rd</sup> Street (East Area)	\$2,188,425.00
NW Expressway (Central Area)	\$759,240.60
Lyrewood Lane (West Area)	\$634,982.40
<b>Estimated Construction Total</b>	<b>\$3,582,648.00</b>
<b>Phase 2A Budget</b>	<b>\$3,784,600.00</b>
<b>Budget Balance</b>	<b>\$201,952.00</b>

# Schedule

M4-TS020 MAPS 4 Sidewalks and Related Amenities Phase 2A Project Schedule	2024												2025												2026												
	January	February	March	April	May	June	July	August	September	October	November	December	January	February	March	April	May	June	July	August	September	October	November	December	January	February	March	April	May	June	July	August	September	October	November	December	
Preliminary Engineering Report																																					
Owner Review																																					
MAPS Presentation																																					
60% Final Plans for Review																																					
Owner Review																																					
ROW Acquisition and Utility Relocations																																					
95% Final Plans for Review																																					
Owner Review																																					
PS&E Submittal																																					
MAPS Presentation																																					
Bidding and Award																																					
Construction																																					



# Questions and Comments

