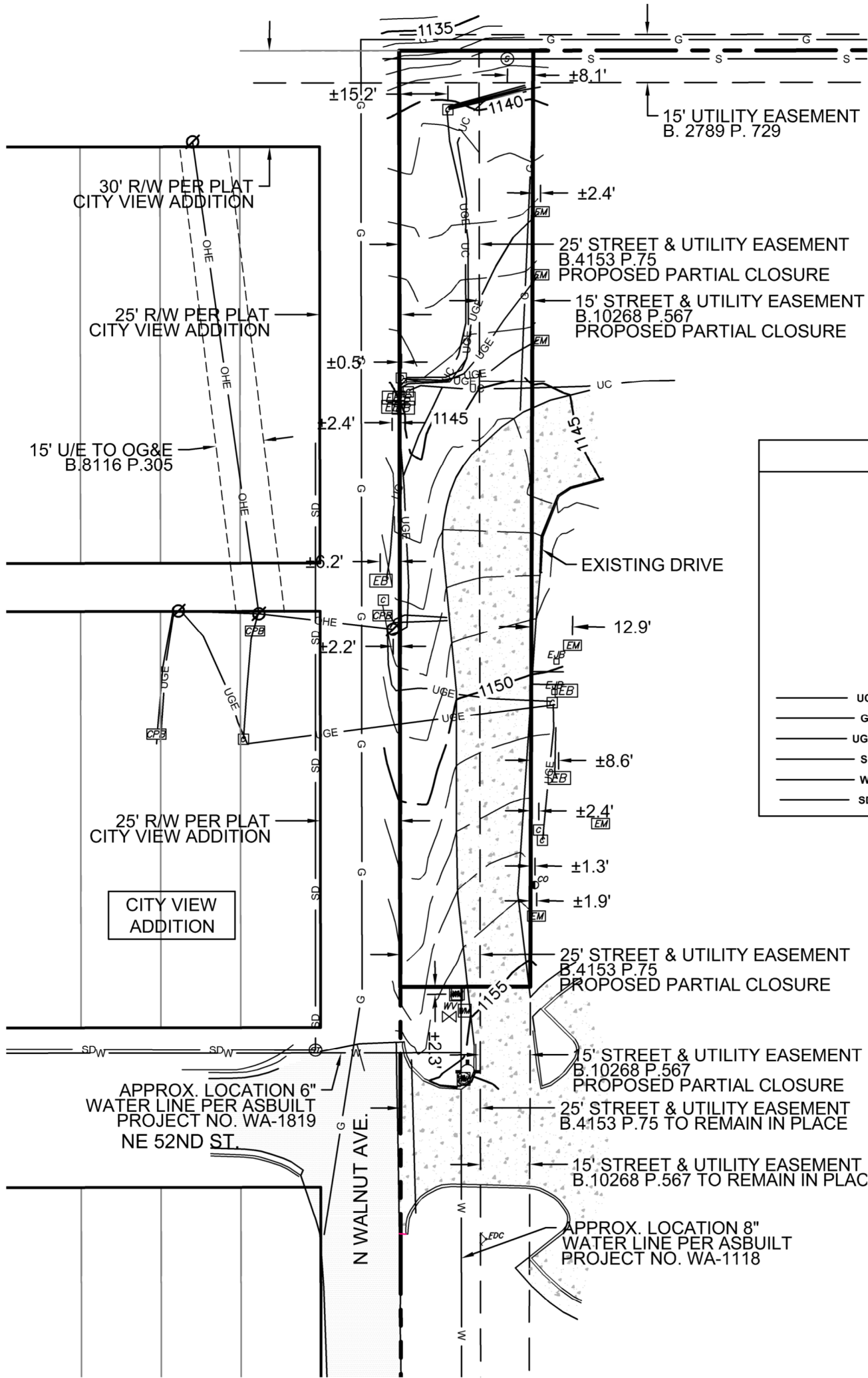
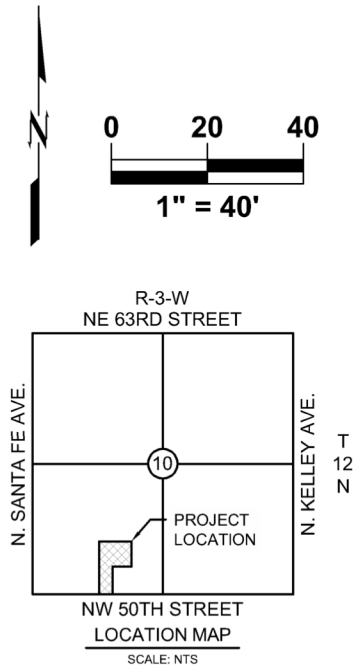


EXHIBIT 'A'
RIGHT OF WAY CLOSURE EXHIBIT
A PART OF THE SW/4 OF SEC. 10, T.12N., R.3W., I.M., CITY OF
OKLAHOMA CITY, OKLAHOMA COUNTY, OKLAHOMA



LEGEND

	ELECTRIC BOX
	ELECTRIC METER
	ELECTRIC JUNCTION BOX
	COMM. PEDESTAL
	COMM. PULL BOX
	SANITARY SEWER MANHOLE
	STORM DRAIN MANHOLE
	FIRE HYDRANT
	WATER METER
	WATER VALVE
	UNDERGROUND COMM. LINE
	GAS LINE
	UNDERGROUND ELECTRIC
	SANITARY SEWER LINE
	WATER LINE
	STORM (DRAIN) PIPE

NOTES:

- This exhibit is for a road closure and does not represent a boundary survey.
- Existing utility easements to remain in place. The intent of this exhibit is for roadway vacation purposes only.
- Utilities shown hereon per OKIE survey/design One Call ticket no. 24062511232412 and City of Oklahoma City utility atlas map and asbuilts.

PIVOT
FOUNDATION
5300 N. WALNUT AVE.
OKLAHOMA CITY



wallace
design
collective

wallace design collective, pc
structural · civil · landscape · survey
410 north walnut avenue, suite 200
oklahoma city, oklahoma 73104
405.236.5858 · 800.364.5858
wallace.design ok.ca 1460

RIGHT OF WAY CLOSURE EXHIBIT

REV.	DESCRIPTION	DATE

PROJECT NO. 2280098 SHEET 1 OF 1