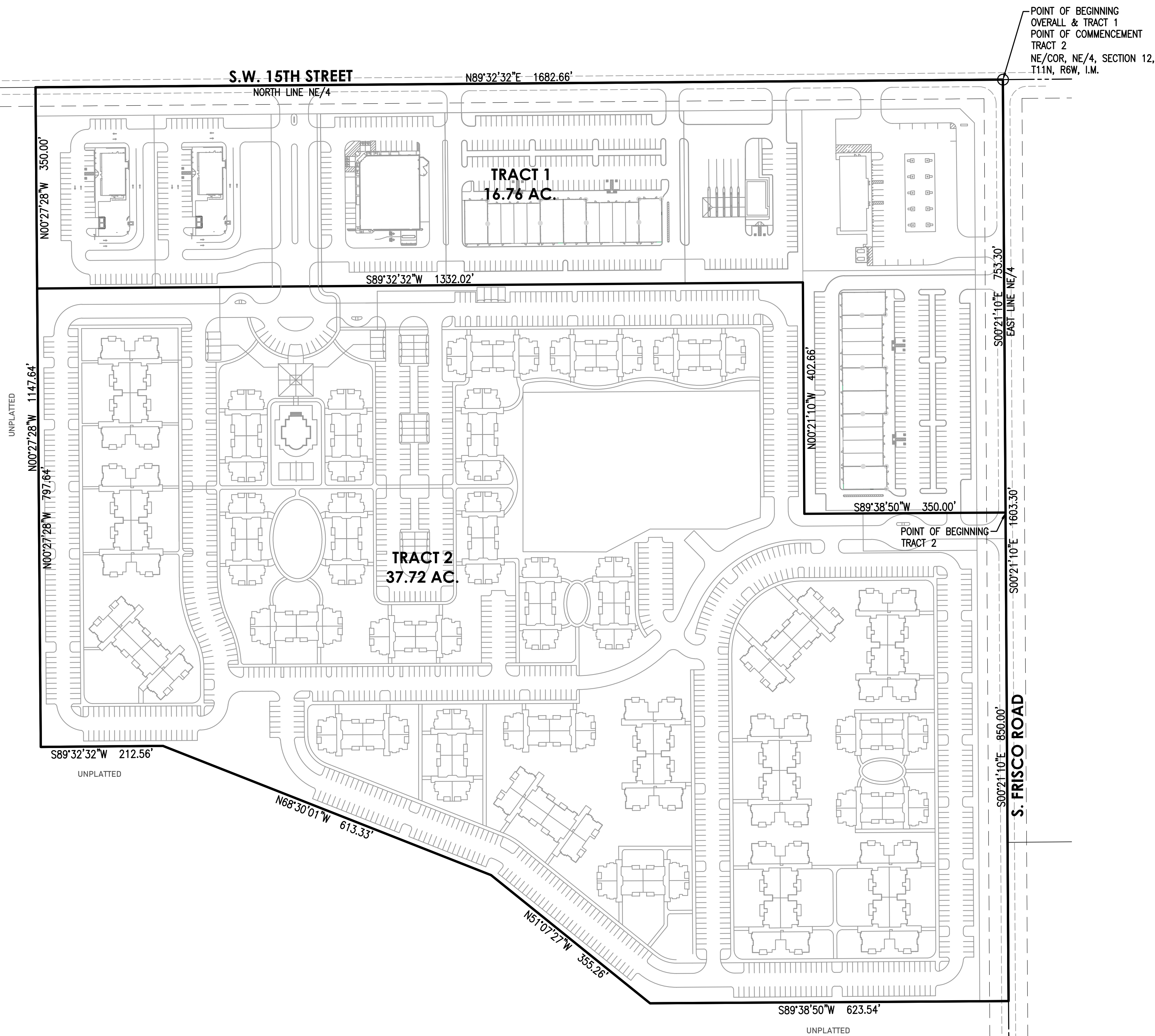
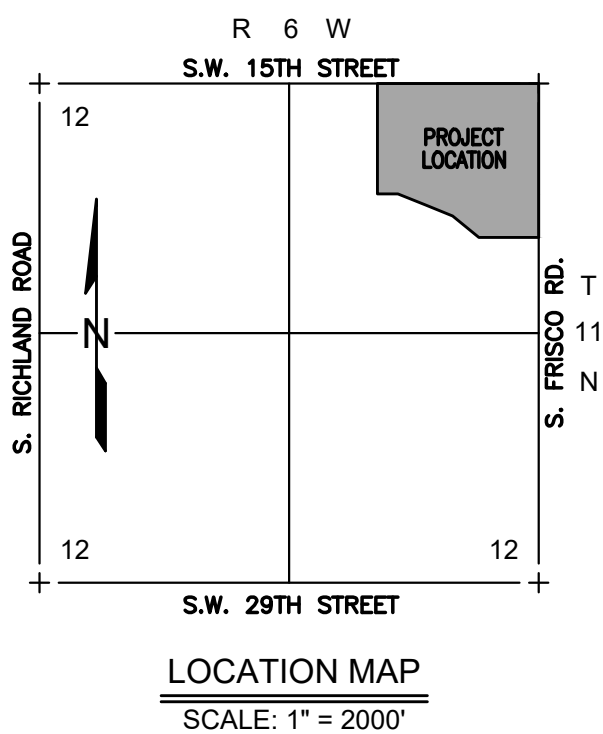
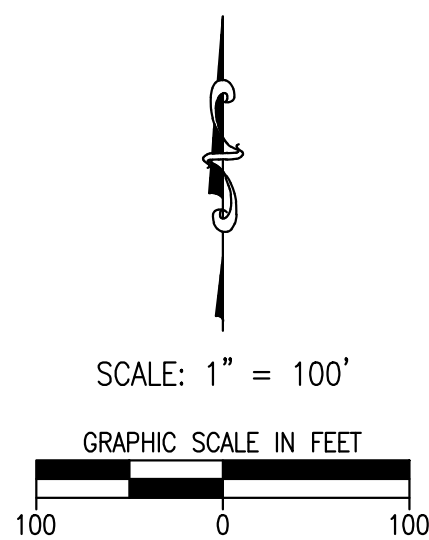


**PUD-2001 Exhibit B**



A tract of land situated in the Northeast Quarter (NE/4) of Section Twelve (12), Township Eleven North (T11N), Range Six West (R6W) of the Indian Meridian (I.M.), Canadian County, Oklahoma; being more particularly described by metes and bounds as follows:

BEGINNING at the Northeast corner of said NE/4; thence

S00°21'10"E along the East line of said NE/4 a distance of 1603.30 feet; thence S89°38'50"W a distance of 623.54 feet; thence N51°07'27"W a distance of 355.26 feet; thence N68°30'01"W a distance of 613.33 feet; thence S89°32'32"W a distance of 212.56 feet; thence N00°27'28"W a distance of 1147.64 feet to a point on the North line of said NE/4; thence N89°32'32"E along said North line a distance of 1682.66 feet to the POINT OF BEGINNING.

Said tract contains 2,373,018 Sq Ft or 54.478 Acres, more or less.

A tract of land situated in the Northeast Quarter (NE/4) of Section Twelve (12), Township Eleven North (T11N), Range Six West (R6W) of the Indian Meridian (I.M.), Canadian County, Oklahoma; being more particularly described by metes and bounds as follows:

BEGINNING at the Northeast corner of said NE/4; thence

S00°21'10"E along the East line of said NE/4 a distance of 753.30 feet; thence  
S89°38'50"W a distance of 350.00 feet; thence  
N00°21'10"W a distance of 402.66 feet; thence  
S89°32'32"W a distance of 1332.02 feet; thence  
N00°27'28"W a distance of 350.00 feet to a point on the North line of said NE/4; thence  
N89°32'32"E along said North line a distance of 1682.66 feet to the POINT OF BEGINNING.


Said tract contains 729,861 Sq Ft or 16.76 Acres, more or less.

A tract of land situated in the Northeast Quarter (NE/4) of Section Twelve (12), Township Eleven North (T11N), Range Six West (R6W) of the Indian Meridian (I.M.), Canadian County, Oklahoma; being more particularly described by metes and bounds as follows:

Commencing at the Northeast corner of said NE/4; thence  
S00°21'10"E along the East line of said NE/4 a distance of 753.30 feet to the POINT OF BEGINNING; thence  
continuing

S00°21'10"E along said East line a distance of 850.00 feet; thence S89°38'50"W a distance of 623.54 feet; thence N51°07'27"W a distance of 355.26 feet; thence N68°30'01"W a distance of 613.33 feet; thence N89°32'32"W a distance of 212.56 feet; thence N00°27'28"W a distance of 797.64 feet; thence N89°32'32"E a distance of 1332.02 feet; thence S00°21'10"E a distance of 402.66 feet; thence N89°38'50"E a distance of 350.00 feet to the POINT OF BEGINNING.

Said tract contains 1,643,158 Sq Ft or 37.72 Acres, more or less.

<p align="center"><b>MASTER DEVELOPMENT PLAN</b> <b>FRISCO FARMS</b></p> <p align="center">300 Pointe Parkway Blvd. Yukon, Oklahoma 73099</p>	
 <p><b>Craffton Tull</b> architectural engineering   surveying 405.787.6270   405.787.6276 <a href="http://www.crafftontull.com">www.crafftontull.com</a></p>	<p><b>SHEET NO.:</b> 1 of 1</p> <p><b>DATE:</b> 02/27/24</p> <p><b>PROJECT NO.:</b> 21609200</p>
<p><small>CERTIFICATE OF AUTHORIZATION: CA 973 (PELS) EXPIRES 6/30/2024</small></p>	