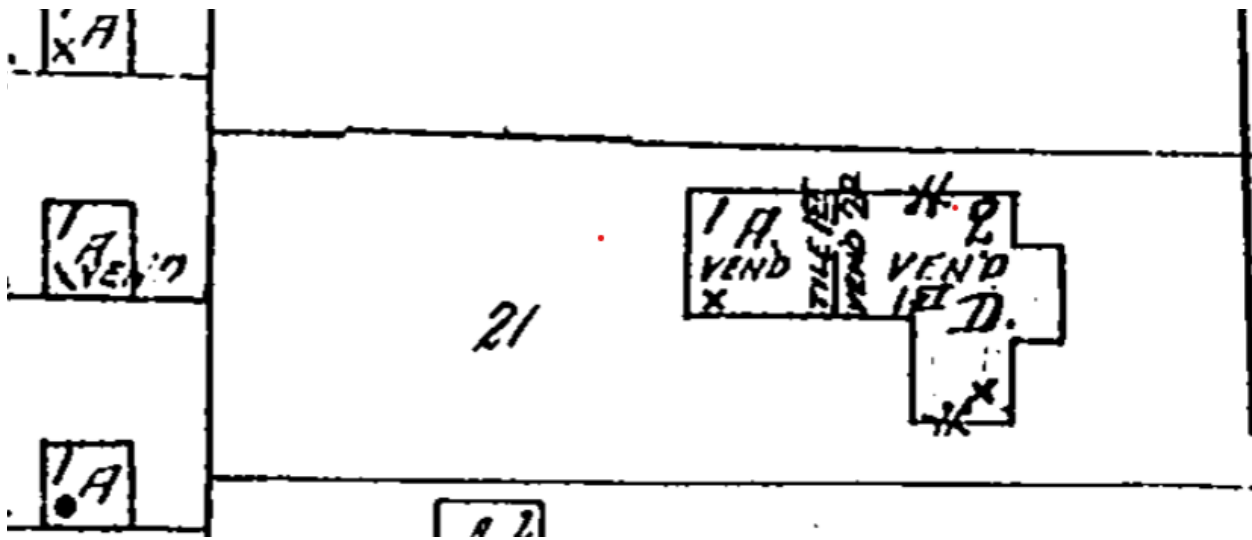
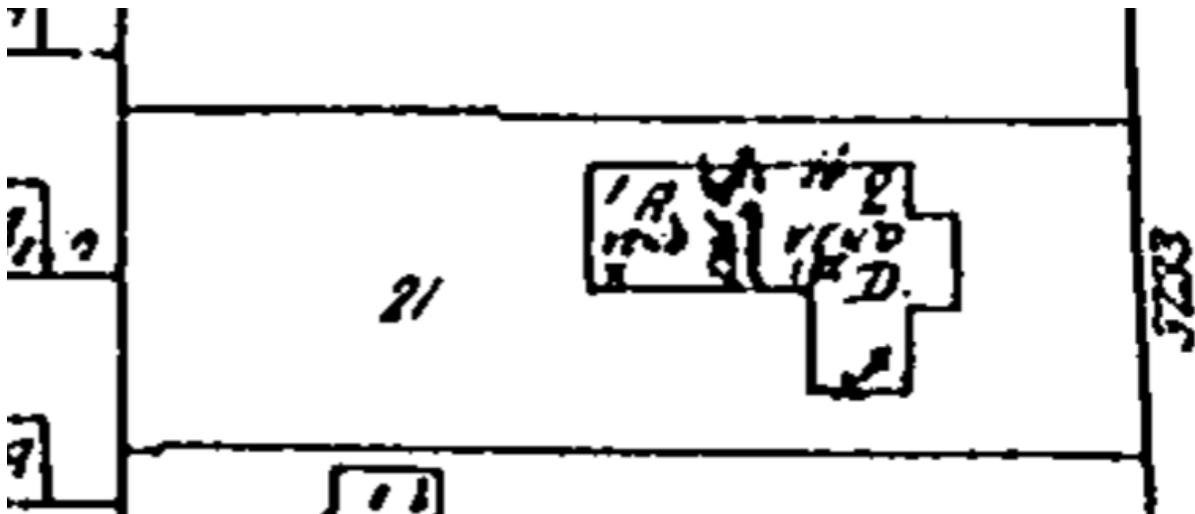


1949 vol 2 pg 221 2-story dwelling with brick veneer at 1st floor and a tile (fire retardant) wall between the dwelling and the attached 1-story garage at the rear (west)



1950 vol 2 pg 221 2-story dwelling with brick veneer at 1st floor and a tile (fire retardant) wall between the dwelling and the attached 1-story garage at the rear (west)



1955 vol 2 pg 221 no change

