



The City of OKLAHOMA CITY

CERTIFICATE OF APPROVAL DOWNTOWN DESIGN REVIEW DISTRICT DTCA-24-00021

Applicant/Owner:

Deborah K Miller City Engineer/Public Works Dir.
City of OKC Public Works Dept.
420 W Main St, Suite 700
Oklahoma City, OK 73072

On 5/14/2024, the Planning Department staff received your application for a Certificate of Approval. In accordance with §59-7200 of the Oklahoma City Municipal Code, also known as the Downtown Zoning Ordinance, staff of the Oklahoma City Planning Department has reviewed in detail the application for **820 NW 5th St.** Staff has determined that the following is in conformance with the provisions of the Ordinance:

- 1) Install generator, generator pad, and 8' tall wood screen fence.**

Note: All items are elective unless construction is started.

All eight (8) attachments must remain together for this document to be valid. Work must be completed within two years of the date of the original approval and must be performed exactly as shown on approved plans.

Approved:

05/28/2024

Effective:

06/12/2024


Expires:

05/28/2026

Note: Work may not commence until after the mandatory 10-working day appeal period starting from the date of approval.

Upon completion of your project, please contact the Planning Department (405-297-1624) for final Special Zoning inspection.

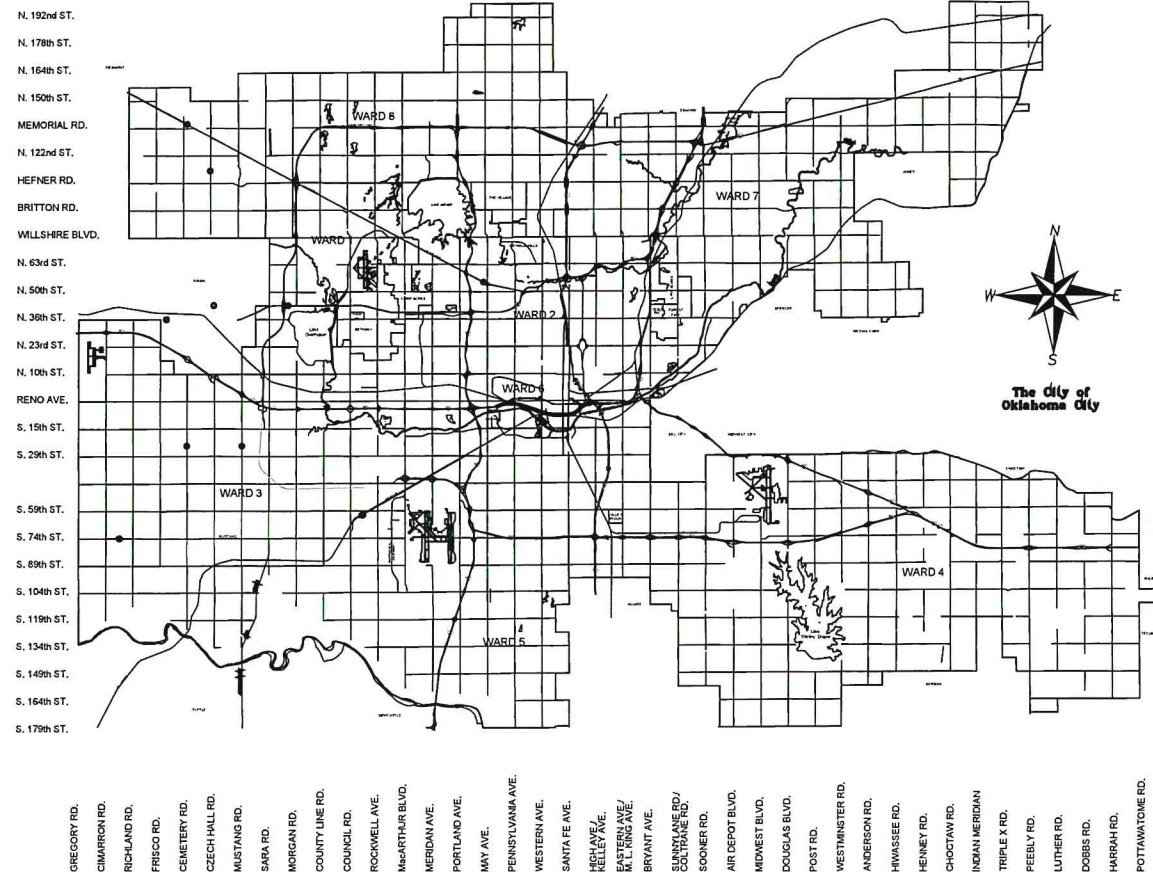
Attest:



Laura Griggs, AICP, Senior Planner
Secretary, Downtown Design Review Committee

Page 1 of 1

*Your project may require a **permit**. Please check with the **Plan Review** section of the Development Services Department, 8th Floor, 420 W Main St (405-297-2525), for details. To obtain a permit, please submit the Certificate of Approval with the original attachments stamped "approved."*



Project No. MB-1683
CITY OF OKLAHOMA CITY
CITYWIDE FIRE DEPARTMENT
GENERATOR ASSESSMENT
Oklahoma City, Oklahoma



The City of
OKLAHOMA CITY

DAVID HOLT

Mayor

COUNCIL MEMBERS

BRADLEY CARTER
JAMES COOPER
BARBARA PECK
TODD STONE
MATT HINKLE
JOBETH HAMON
NIKKI NICE
MARK K. STONECIPHER

Ward 1
Ward 2
Ward 3
Ward 4
Ward 5
Ward 6
Ward 7
Ward 8

CRAIG FREEMAN

City Manager

DEBORAH K. MILLER P.E.

City Engineer

DESIGN REVIEW +
CERTIFICATE OF APPROVAL
CA# DTCA-24-00021
Approval Date: 05 / 20 / 2024
Expiration Date: 05 / 20 / 2026
Revised Date: / /
Items: Approved By: lg
With: Condition(s) / Variance
Page 1 of 1
KAHLE A. WILSON
PROJECT ARCHITECT

ONE CALL UTILITY LOCATION NUMBER

840-5032
1-800-522-6543

This number is to be used for information on the location of all underground utilities. Contact this number and other numbers specified in the plans prior to any excavation.

RECOMMENDED FOR APPROVAL

DEBORAH K. MILLER, P.E.
INTERIM DIRECTOR PUBLIC WORKS / INTERIM
CITY ENGINEER

DATE

APPROVED AS FINAL PLANS

MAYOR

DATE

CITY CLERK

DATE

RECEIVED
MAY 13 2024
PLANNING DEPARTMENT

Project No. MB-1683

City of Oklahoma City

Citywide Fire Department Generator Assessment Oklahoma City, Oklahoma

DESIGN REVIEW

CERTIFICATE OF APPROVAL

CA# DICA-24-00021

Approval Date: 05 / 28 / 2024

Expiration Date: 05 / 28 / 2026

Revised Date: / /

Items: Approved By: lg

With: Condition(s) / Variance

Page 2 of 8

ABBREVIATIONS

AC	ACOUSTIC	LAM	LAMINATED
AD	AREA DRAIN	LG	LONG
ADJ	ADJUSTABLE	LP	LOW POINT
AFF	ABOVE FINISH FLOOR	LAV	LAVATORY
ALT	ALTERNATE	MANUF	MANUFACTURER
ALUM	ALUMINUM	MAS	MASONRY
ANOD	ANODIC ANODIZED	MAT	MATERIAL
L	ANGLE	MAX	MAXIMUM
AUX	AUXILIARY	MECH	MECHANICAL
A/C	AIR CONDITIONED	MTD	MOUNTED
A.B.	ANCHOR BOLT	MTL	METAL
A.D.R.	ACCESS DOOR	MIN	MINIMUM
AB, FL	ABOVE FLOOR	MTD.	MOUNTED
BIT	BITUMINOUS	M.	MEN
BO	BOARD	MISC.	MISCELLANEOUS
BLK'G	BLOCKING	NIC	NOT IN CONTRACT
BRZ	BRONZE	NTS	NOT TO SCALE
BLDG	BUILDING	NO.	NUMBER
BU	BUILT UP ROOF	OFF.	OFFICE
BV	BRICK VENT	O.H.D	OVER HEAD DOOR
BOTT	BOTTOM	OC	ON CENTER
BSMT	BASEMENT	OD	OUT SIDE DIAMETER
BRG.	BEARING	OPNG	OPENING
B.M.	BENCH MARK	OH, OPP HD	OPPOSITE HAND
CAB	CABINET	OVHD	OVERHEAD
CB	CATCH BASIN	PR	PAIR
CEM	CEMENT	PARTN	PARTITION
C.T.	CERAMIC TILE	>	PLATE
CLG	CEILING	POL GL	POLISHED PLATE GLASS
<	CENTER LINE	PLAS	PLASTER
C	CHANNEL	POL	POLISHED
CLOS	CLOSET	PORC EN	PORCELAIN ENAMEL
COL	COLUMN	PSI	POUNDS PER SQUARE INCH
C.M.U.	CONCRETE MASONRY UNIT	PROJ	PROJECTION
COMP	COMPRESSIBLE	PT	POINT
CONC	CONCRETE	PTD	PAINTED
CONST	CONSTRUCTION	PSF	POUNDS PER SQUARE FOOT
CORR	CORRIDOR	PLBG.	PLUMBING
CJ	CONTROL JOINT	PUB.	PUBLIC
CSL	CONTROL SLAB	QUARRY TILE	QUARRY TILE
CRT	CENTER	REF.	REFRIGERATOR
CNF	CONFERENCE	RF	ROOF
CONT.	CONTINUOUS	R	RADIUS
CNTR	CENTER	RD	ROOF DRAIN
DEPR	DEPRESSION	RM	ROOM
DTL	DETAIL	ROUND/DIAMETER	ROUND/DIAMETER
DF	DRAINING FOUNTAIN	REINF	REINFORCING
DWG	DRAWING	REQ	REQUIRED
DW	DRYWALL	RWC	RAIN WATER CONDUCTOR
DK	DECK	REM	REMOVABLE MULLION
DN	DOWN	RECES	RECESSED
DBL	DOUBLE	RS	RELIEF SCUPPER
DIM	DIMENSION	RAD	RADIATION
EA	EACH	RET.	RETURN
EF	EXHAUST FAN	R/A	RETURN AIR
ELEV	ELEVATION	SHT	SHEET
ELEC	ELECTRIC	SIM	SIMILAR
EQ	EQUAL	S.S.	STAINLESS STEEL
EQUIP	EQUIPMENT	STL	STEEL
EJ	EXPANSION JOINT	STOR	STORAGE
EXIST	EXISTING	STRUCT, STR	STRUCTURAL
EXP	EXPANSION	SUSP	SUSPENDED
E.C.	ELECTRICAL CONTRACTOR	SL	SLAB
E.W.C.	ELECTRIC WATER COOLER	SECT.	SECTION
FTG.	FOOTING	SQ.	SQUARE
FON	FOUNDATION	STD.	STANDARD
FE	FIRE EXTINGUISHER	T	TILE
FEC	FIRE EXTINGUISHER CABINET	TEMP	TEMPERED
FIN	FINISH	TINT	TINTED
FLR	FLOOR	TOS	TOP OF SLAB
FD	FLOOR DRAIN	T&B	TOP AND BOTTOM
FLASH	FLASH	TRTD	TREATED
FTG	FOOTING	TYP	TYPICAL
FURN	FURNISH	T.O.W.	TOP OF WALL
FRPF	FIREPROOF, FIREPROOFING	TEL	TELEPHONE
GA	GAUGE	TH.	THICK
CC	GENERAL CONTRACTOR	T.	TOILET
GEN'L	GENERAL	U.C.	UNDER COUNTER
GL	GLASS	UNPOL	UNPOLISHED
GR.	GROUND	UV	UNIT VENTILATOR
GYP BD	GYPSPUM BOARD	URIN	URINAL
HDWD	HARDWOOD	VAC.	VACUUM
HM	HOLLOW METAL	VCT	VINYL COMPOSITION TILE
HP	HIGH POINT	VERT.	VERTICAL
HVAC	HEATING, VENTING, AND AIR CONDITIONING	W	WIDTH
HT	HEIGHT	WV	WITH
HC	HANDICAPPED	W/O	WITHOUT
HTR	HEATER	WD	WOOD
HORIZ	HORIZONTAL	W.GL	WIRE GLASS
HR.	HOUR	WIND	WINDOW
ID	INSIDE DIAMETER	WP	WATER PROOFING
INSUL	INSULATION	W.W.F. / W.W.M.	WELDED WIRE MESH
INT.	INTERIOR	WSCT.	WAINSCOT
JAN	JANITOR	W.C.	WATER CLOSET
JT	JOINT	WT.	WEIGHT
K.D.	KNOCK DOWN	WDW.	WINDOW

GENERAL

G-1 COVER SHEET

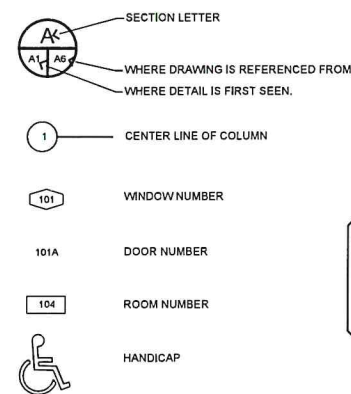
ARCHITECTURE

A1.00 OVERALL SITE LOCATION MAP

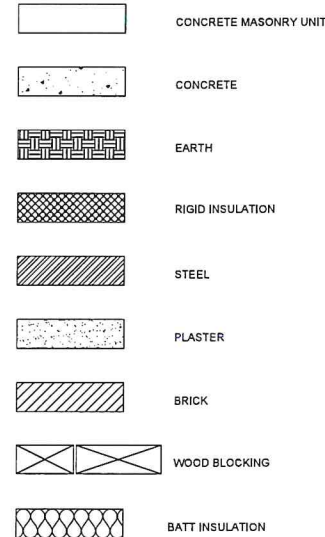
ELECTRICAL

E00.0	ELECTRICAL LEGEND
E01.0	ELECTRICAL SITE PLAN - FIRE STATION #1
E01.1	ELECTRICAL FLOOR PLAN - FIRE STATION #1
E01.2	ELECTRICAL RISER DIAGRAMS - FIRE STATION #1
E02.0	ELECTRICAL SITE PLAN - FIRE PREVENTION
E02.1	ELECTRICAL FLOOR PLAN - FIRE PREVENTION
E02.2	ELECTRICAL RISER DIAGRAMS - FIRE PREVENTION
E03.0	ELECTRICAL SITE PLAN - FIRE STATION #8
E03.1	ELECTRICAL FLOOR PLAN - FIRE STATION #8
E03.2	ELECTRICAL RISER DIAGRAMS - FIRE STATION #8
E04.0	ELECTRICAL SITE PLAN - FIRE STATION #6
E04.1	ELECTRICAL FLOOR PLAN - FIRE STATION #6
E04.2	ELECTRICAL RISER DIAGRAMS - FIRE STATION #6
E05.0	ELECTRICAL SITE PLAN - FIRE STATION #5
E05.1	ELECTRICAL FLOOR PLAN - FIRE STATION #5
E05.2	ELECTRICAL RISER DIAGRAMS - FIRE STATION #5
E06.0	ELECTRICAL SITE PLAN - FIRE STATION #34
E06.1	ELECTRICAL FLOOR PLAN - FIRE STATION #34
E06.2	ELECTRICAL RISER DIAGRAMS - FIRE STATION #34
E07.0	ELECTRICAL SITE PLAN - FIRE STATION #16
E07.1	ELECTRICAL FLOOR PLAN - FIRE STATION #16
E07.2	ELECTRICAL RISER DIAGRAMS - FIRE STATION #16
E08.0	ELECTRICAL SITE PLAN - FIRE STATION #7
E08.1	ELECTRICAL FLOOR PLAN - FIRE STATION #7
E08.2	ELECTRICAL RISER DIAGRAMS - FIRE STATION #7
E09.0	ELECTRICAL SITE PLAN - FIRE STATION #30
E09.1	ELECTRICAL FLOOR PLAN - FIRE STATION #30
E09.2	ELECTRICAL RISER DIAGRAMS - FIRE STATION #30
E10.0	ELECTRICAL SITE PLAN - FIRE STATION #21
E10.1	ELECTRICAL FLOOR PLAN - FIRE STATION #21
E10.2	ELECTRICAL RISER DIAGRAMS - FIRE STATION #21
E11.0	ELECTRICAL SITE PLAN - FIRE STATION #9
E11.1	ELECTRICAL FLOOR PLAN - FIRE STATION #9
E11.2	ELECTRICAL RISER DIAGRAMS - FIRE STATION #9
E12.0	ELECTRICAL SITE PLAN - FIRE STATION #35
E12.1	ELECTRICAL FLOOR PLAN - FIRE STATION #35
E12.2	ELECTRICAL RISER DIAGRAMS - FIRE STATION #35
E13.0	ELECTRICAL SITE PLAN - FIRE DEPT. MAINTENANCE
E13.1	ELECTRICAL FLOOR PLAN - FIRE DEPT. MAINTENANCE
E13.2	ELECTRICAL RISER DIAGRAMS - FIRE DEPT. MAINTENANCE
E14.0	ELECTRICAL SITE PLAN - FIRE STATION #14
E14.1	ELECTRICAL FLOOR PLAN - FIRE STATION #14
E14.2	ELECTRICAL RISER DIAGRAMS - FIRE STATION #14
E15.0	ELECTRICAL SITE PLAN - FIRE STATION #3
E15.1	ELECTRICAL FLOOR PLAN - FIRE STATION #3
E15.2	ELECTRICAL RISER DIAGRAMS - FIRE STATION #3
E16.0	ELECTRICAL SITE PLAN - FIRE STATION #23
E16.1	ELECTRICAL FLOOR PLAN - FIRE STATION #23
E16.2	ELECTRICAL RISER DIAGRAMS - FIRE STATION #23
E17.0	ELECTRICAL SITE PLAN - FIRE STATION #19
E17.1	ELECTRICAL FLOOR PLAN - FIRE STATION #19
E17.2	ELECTRICAL RISER DIAGRAMS - FIRE STATION #19
E18.0	ELECTRICAL SITE PLAN - FIRE STATION #15
E18.1	ELECTRICAL FLOOR PLAN - FIRE STATION #15
E18.2	ELECTRICAL RISER DIAGRAMS - FIRE STATION #15
E19.0	ELECTRICAL SITE PLAN - FIRE STATION #24
E19.1	ELECTRICAL FLOOR PLAN - FIRE STATION #24
E19.2	ELECTRICAL RISER DIAGRAMS - FIRE STATION #24
E20.0	ELECTRICAL DETAILS

SYMBOLS



MATERIAL LEGEND



RECEIVED

MAY 3 2024

PLANNING DEPARTMENT

Consultants:

This document contains confidential information. It is the property of the City of Oklahoma City and shall not be used on other projects or for the execution of this project without the Architect's written approval. Do Not Reproduce



Project No. MB-1683
City of Oklahoma City
Citywide Fire Department Generator
Assessment
Oklahoma City, Oklahoma



1501 S.W. 104th
Oklahoma City, OK 73159
Phone No. (405)691-9900
Fax No. (405)691-2080
www.dap-okc.com

Date:

Date: 04/30/2024
Job # 0704.0

Sheet No.

G-1

Cover Sheet

ELECTRICAL LEGEND			
SYMBOL	DESCRIPTION	SYMBOL	DESCRIPTION
	RECEPTACLES MOUNT 18" AFF TO CENTER, UNO SUBSCRIPTS: CF QUAD LOCATED UNDER RAISED COMPUTER FLOORING CR CORD REEL ASSEMBLY (SEE DETAIL) DC DROP CORD (SEE DETAIL) DS FOR DISPLAY, TV, OR MONITOR (SEE DETAIL) FF FLOOR BOX WITH HARDWIRED CONNECTION TO FURNITURE FP FLOOR BOX WITH POWER AND DATA RECEPTACLES (REFER TO SPECS) GFI GROUND FAULT CIRCUIT INTERRUPTER IG ISOLATED GROUND P CEILING MOUNTED FOR PROJECTOR (SEE DETAIL) SB FOR SMARTBOARD OR SIMILAR (SEE DETAIL) SP SURGE PROTECTED TR TAMPER RESISTANT TV FOR DISPLAY, TV, OR MONITOR (SEE DETAIL) USB INCLUDES INTEGRAL USB CHARGING PORTS WP WEATHERPROOF WHILE IN USE (WITH METAL COVER)		CIRCUITING/RACEWAY HOMERUN TO PANEL INDICATED, ARROWHEADS INDICATE NUMBER OF CCTS. CONDUIT CAPPED FOR FUTURE USE CONTROL/MISC PUSH-BUTTON STATION MOUNTED 48" AFF TO TOP THERMOSTAT OR TEMPERATURE SENSOR MOUNTED 48" AFF TO TOP TO CENTER, UNO. GROUND ROD GROUND WELL METER CEILING MOUNTED OCCUPANCY SENSOR CEILING MOUNTED DAYLIGHT SENSOR LONG RANGE CEILING MOUNTED OCCUPANCY SENSOR WALL MOUNTED OCCUPANCY SENSOR BOLD LINETYPES REPRESENT NEW WORK SUBDUED LINETYPES REPRESENT EXISTING WORK BOLD & DASHED LINETYPES REPRESENT DEMOLITION WORK POWER DISTRIBUTION PANELBOARD SAFETY DISCONNECT SWITCH SAFETY DISCONNECT SWITCH - FUSED COMBINATION DISCONNECT SWITCH AND MOTOR STARTER OR CONTROL PANEL VARIABLE FREQUENCY DRIVE CONTACTOR / RELAY / CONTROLLER MOTOR JUNCTION BOX JUNCTION BOX, WALL MOUNTED FLOOR BOX UNDERFLOOR DUCT JUNCTION BOX DRY TYPE TRANSFORMER MOUNTED ON 3.5" TALL CONCRETE HOUSE KEEPING PAD, PAD SHALL BE 6" LARGER THAN TX ON ALL (4) SIDES; CHAMFER ALL CORNERS OF PAD. GROUND BAR

NOTE: ALL SYMBOLS ARE NOT NECESSARILY USED ON THIS PROJECT

ABBREVIATIONS	
ABBREVIATION	DESCRIPTION
AFB	ABOVE FINISHED FLOOR
AFG	ABOVE FINISHED GRADE
AL	ALUMINUM
AIC	SYMMETRICAL AMPS INTERRUPTING CAPACITY
AWG	AMERICAN WIRE GAUGE
AV	AUDIBLE AND VISUAL
BAS	BUILDING AUTOMATION SYSTEM
BFF	BELOW FINISHED FLOOR
BFG	BELOW FINISHED GRADE
BLDG	BUILDING
C	CONDUIT
CB	CIRCUIT BREAKER
CU	COPPER
DC	DROP CORD
DDC	DIRECT DIGITAL CONTROL
EG	EQUIPMENT GROUND
ELEC	ELECTRICAL
EMCS	ENERGY MANAGEMENT & CONTROL SYSTEM
EMT	ELECTRICAL METALLIC TUBING
ETC.	ET CETERA
EW	ELECTRIC WATER COOLER
EXIST.	EXISTING
FA	FIRE ALARM
FIC	FIBER OPTIC INTERCONNECT CENTER
FMC	FLEXIBLE METALLIC CONDUIT
GFI OR GFCI	GROUND FAULT CIRCUIT INTERRUPTER
IG	ISOLATED GROUND
LTFMC	LIQUID TIGHT FLEXIBLE METALLIC CONDUIT
LV	LOW VOLTAGE
MCA	MINIMUM CIRCUIT AMPACITY
MCB	MAIN CIRCUIT BREAKER
MCC	MOTOR CONTROL CENTER
MLO	MAIN LUGS ONLY
N/A	NOT APPLICABLE
N.C.	NORMALLY CLOSED
NEC	NATIONAL ELECTRICAL CODE
NEUT.	NEUTRAL
NC	NOT IN CONTRACT
N.O.	NORMALLY OPEN
NL	NIGHT LIGHT (CONNECT TO UNSWITCHED CIRCUIT)
OC	ON CENTER
OH	OVERHEAD
OHD	OVERHEAD DOOR
PBL	PANELBOARD
RGS	RIGID GALVANIZED STEEL CONDUIT
SCH.	SCHEDULE
SPECS	CONTRACT SPECIFICATIONS
TEL	TELEPHONE
TGB	TELEPHONE GROUND BAR
TIB	TELEPHONE TERMINAL BOARD
TYP	TYPICAL
UG	UNDERGROUND
UGT	UNDERGROUND TELEPHONE
UL	UNDERWRITERS LABORATORIES
UNO	UNLESS NOTED OTHERWISE
VFD	VARIABLE FREQUENCY DRIVE
WAP	WIRELESS ACCESS POINT
WP	WEATHERPROOF
48"	MOUNTING HEIGHT ABOVE FINISHED FLOOR OR FINISHED GRADE MOUNTING
-48"	HEIGHT BELOW FINISHED FLOOR OR FINISHED GRADE

GENERAL PROJECT NOTES

1. ALL WORK SHALL BE IN CONFORMANCE WITH NATIONAL, STATE, AND LOCAL CODES AND/OR ORDINANCES.
2. ELECTRICAL CONTRACTOR SHALL COORDINATE WORK WITH ALL OTHER CONTRACTORS & LOCAL UTILITY, E.C. SHALL CONTACT LOCAL UTILITY FOR EXACT SERVICE REQUIREMENTS TO INCLUDE BUT NOT LIMITED TO TRANSFORMER, METERING AND CABLING. LOCAL UTILITY REQUIREMENTS SUPERSEDE DRAWINGS AND SPECIFICATIONS.
3. ELECTRICAL DRAWINGS ARE DIAGRAMMATIC ONLY. THEY ARE INTENDED TO GIVE APPROXIMATE LOCATIONS AND OVERALL DESIGN INTENT. THE ELECTRICAL CONTRACTOR SHALL BE RESPONSIBLE FOR PRODUCTS, MATERIALS, AND ELECTRICAL METHODS WHICH HAVE NOT BEEN SHOWN OR INDICATED BUT ARE REQUIRED FOR A COMPLETE SYSTEM TO THE STANDARDS OF THE INDUSTRY.
4. ELECTRICAL RACEWAYS THAT PENETRATE FIRE RATED ASSEMBLIES SHALL BE SLEEVED AND SEALED USING AN APPROVED UL LISTED ASSEMBLY AND PER THE LOCAL BUILDING CODE.
5. WHERE THERE ARE CONFLICTS BETWEEN ANY SECTIONS OF THE SPECIFICATIONS OR THE PLANS OR BETWEEN THE PLANS AND SPECIFICATIONS, THE MOST STRICT SHALL APPLY. THE MOST STRICT REQUIREMENT SHALL BE INTERPRETED TO BE THE MOST EXPENSIVE METHOD UNLESS DIRECTED OTHERWISE BY THE ARCHITECT OR ENGINEER.
6. COORDINATE ALL OUTGAGES WITH OWNER AND ARCHITECT.
7. COORDINATE ALL NEW SERVICE LATERAL CONNECTIONS WITH UTILITY.
8. COORDINATE ALL CONDUIT ROUTES WITH OWNER AND ARCHITECT PRIOR TO ROUGH-IN.
9. ALL CONCRETE CUTTING/PATCHING SHALL BE COORDINATED AND PROVIDED BY THIS CONTRACTOR.
10. THIS IS A TURN-KEY PROJECT. THIS CONTRACTOR SHALL PROVIDE ALL PARTS AND LABOR AS REQUIRED FOR A FULLY FUNCTIONING AND CODE COMPLIANT NEW SERVICE. ALL FEES REQUIRED BY UTILITY TO FACILITATE THIS AT EACH SITE WILL BE PAID BY THE CONTRACTOR AND INCLUDED WITHIN THE CONTRACTOR'S BID.
11. ALL GENERATORS LISTED HEREIN SHALL BE DIESEL, POWERED AND SHALL HAVE A BELLY TANK CAPABLE OF A 72 HOUR RUNTIME AT FULL LOAD.

ELECTRICAL SHEET INDEX:

E00.0 - ELECTRICAL LEGEND
E01.0 - ELECTRICAL SITE PLAN - FIRE STATION #1
E01.1 - ELECTRICAL FLOOR PLAN - FIRE STATION #1
E01.2 - ELECTRICAL RISER DIAGRAM - FIRE STATION #1
E02.0 - ELECTRICAL SITE PLAN - FIRE PREVENTION
E02.1 - ELECTRICAL FLOOR PLAN - FIRE PREVENTION
E02.2 - ELECTRICAL RISER DIAGRAM - FIRE PREVENTION
E03.0 - ELECTRICAL SITE PLAN - FIRE STATION #2
E03.1 - ELECTRICAL FLOOR PLAN - FIRE STATION #2
E03.2 - ELECTRICAL RISER DIAGRAM - FIRE STATION #2
E04.0 - ELECTRICAL SITE PLAN - FIRE STATION #3
E04.1 - ELECTRICAL FLOOR PLAN - FIRE STATION #3
E04.2 - ELECTRICAL RISER DIAGRAM - FIRE STATION #3
E05.0 - ELECTRICAL SITE PLAN - FIRE STATION #4
E05.1 - ELECTRICAL FLOOR PLAN - FIRE STATION #4
E05.2 - ELECTRICAL RISER DIAGRAM - FIRE STATION #4
E06.0 - ELECTRICAL SITE PLAN - FIRE STATION #5
E06.1 - ELECTRICAL FLOOR PLAN - FIRE STATION #5
E06.2 - ELECTRICAL RISER DIAGRAM - FIRE STATION #5
E07.0 - ELECTRICAL SITE PLAN - FIRE STATION #6
E07.1 - ELECTRICAL FLOOR PLAN - FIRE STATION #6
E07.2 - ELECTRICAL RISER DIAGRAM - FIRE STATION #6

ELECTRICAL SHEET INDEX: (CONT'D)

E08.0 - ELECTRICAL SITE PLAN - FIRE STATION #7
E08.1 - ELECTRICAL FLOOR PLAN - FIRE STATION #7
E08.2 - ELECTRICAL RISER DIAGRAM - FIRE STATION #7
E09.0 - ELECTRICAL SITE PLAN - FIRE STATION #8
E09.1 - ELECTRICAL FLOOR PLAN - FIRE STATION #8
E09.2 - ELECTRICAL RISER DIAGRAM - FIRE STATION #8
E10.0 - ELECTRICAL SITE PLAN - FIRE STATION #9
E10.1 - ELECTRICAL FLOOR PLAN - FIRE STATION #9
E10.2 - ELECTRICAL RISER DIAGRAM - FIRE STATION #9
E11.0 - ELECTRICAL SITE PLAN - FIRE STATION #10
E11.1 - ELECTRICAL FLOOR PLAN - FIRE STATION #10
E11.2 - ELECTRICAL RISER DIAGRAM - FIRE STATION #10
E12.0 - ELECTRICAL SITE PLAN - FIRE STATION #11
E12.1 - ELECTRICAL FLOOR PLAN - FIRE STATION #11
E12.2 - ELECTRICAL RISER DIAGRAM - FIRE STATION #11
E13.0 - ELECTRICAL SITE PLAN - FIRE DEPT. MAINTENANCE
E13.1 - ELECTRICAL FLOOR PLAN - FIRE DEPT. MAINTENANCE
E13.2 - ELECTRICAL RISER DIAGRAM - FIRE DEPT. MAINTENANCE
E14.0 - ELECTRICAL SITE PLAN - FIRE STATION #12
E14.1 - ELECTRICAL FLOOR PLAN - FIRE STATION #12
E14.2 - ELECTRICAL RISER DIAGRAM - FIRE STATION #12

ELECTRICAL SHEET INDEX: (CONT'D)

E15.0 - ELECTRICAL SITE PLAN - FIRE STATION #3
E15.1 - ELECTRICAL FLOOR PLAN - FIRE STATION #3
E15.2 - ELECTRICAL RISER DIAGRAM - FIRE STATION #3
E16.0 - ELECTRICAL SITE PLAN - FIRE STATION #23
E16.1 - ELECTRICAL FLOOR PLAN - FIRE STATION #23
E16.2 - ELECTRICAL RISER DIAGRAM - FIRE STATION #23
E17.0 - ELECTRICAL SITE PLAN - FIRE STATION #19
E17.1 - ELECTRICAL FLOOR PLAN - FIRE STATION #19
E17.2 - ELECTRICAL RISER DIAGRAM - FIRE STATION #19
E18.0 - ELECTRICAL SITE PLAN - FIRE STATION #15
E18.1 - ELECTRICAL FLOOR PLAN - FIRE STATION #15
E18.2 - ELECTRICAL RISER DIAGRAM - FIRE STATION #15
E19.0 - ELECTRICAL SITE PLAN - FIRE STATION #24
E19.1 - ELECTRICAL FLOOR PLAN - FIRE STATION #24
E19.2 - ELECTRICAL RISER DIAGRAM - FIRE STATION #24
E20.0 - ELECTRICAL DETAILS

DESIGN REVIEW
CERTIFICATE OF APPROVAL

CA# DTCA-24-00021
Approval Date: 05/28/2024
Expiration Date: 05/28/2026
Revised Date: / /
Items: Approved By: lg
With: Condition(s) / Variance
Page 3 of 8

Consultants:

ALLEN
CONSULTING
INCORPORATED
2649 S.W. 11th Ave., Suite 200
Oklahoma City, Oklahoma 73106
Phone: (405) 691-9900
Fax: (405) 691-2080
www.allokc.com

This document contains confidential information. It is the property of Allen Consulting Incorporated. It shall not be used on any project or for the execution of any work without the written consent of Allen Consulting Incorporated. Do Not Reproduce

Project No. MB-1683

City of Oklahoma City
Citywide Fire Department Generator
Assessment
Oklahoma City, Oklahoma

DESIGN ARCHITECTS PLUS

1501 S.W. 104th
Oklahoma City, OK 73159
Phone No. (405) 691-9900
Fax No. (405) 691-2080
www.dap-okc.com

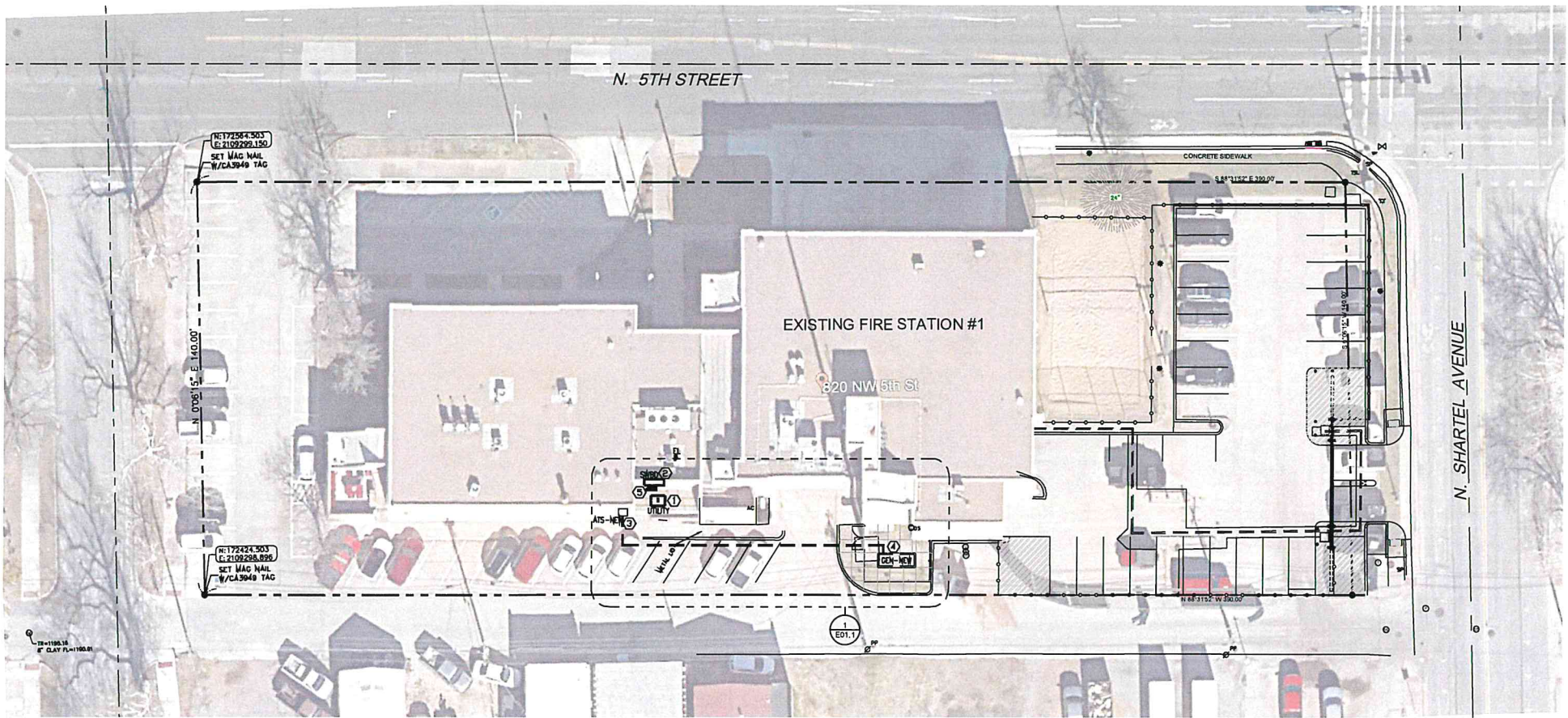
Date: 04/30/2024
Job # 0704.0

Sheet No.
E00.0
Electrical
Legend

RECEIVED
MAY 13 2024
PLANNING DEPARTMENT

GENERAL NOTES:
A. CONTRACTOR TO FIELD VERIFY EXACT LOCATIONS OF ATS, GENERATOR, MAIN SERVICE PANEL, AND UTILITY ON-SITE PRIOR TO BID.

- KEYED NOTES:** ①
- 1. EXISTING UTILITY TRANSFORMER TO REMAIN.
 - 2. EXISTING SERVICE ENTRANCE PANEL TO REMAIN.
 - 3. PROPOSED LOCATION OF NEW ATS.
 - 4. PROPOSED LOCATION OF NEW GENERATOR.
 - 5. EXISTING METER AND CT CABINET TO REMAIN.



① FIRE STATION #1 OVERALL SITE PLAN
SCALE: 1" = 20'-0"

DESIGN REVIEW
CERTIFICATE OF APPROVAL
CA# DICA-24-00021
Approval Date: 05/28/2024
Expiration Date: 05/28/2026
Revised Date: / /
Items: Approved By: lg
With: Condition(s) / Variance
Page 4 of 8

Consultants:

The document contains confidential information. It is loaned and not to be reproduced or used for any other purpose without the written approval of the project engineer. Do Not Reproduce.



Project No. MB-1683
City of Oklahoma City
Citywide Fire Department Generator
Assessment
Oklahoma City, Oklahoma

DESIGN ARCHITECTS PLUS

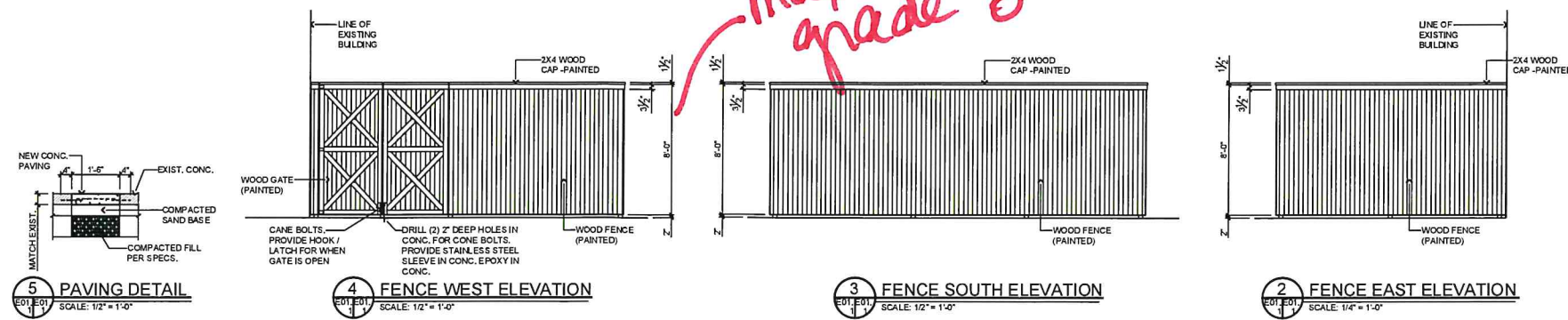
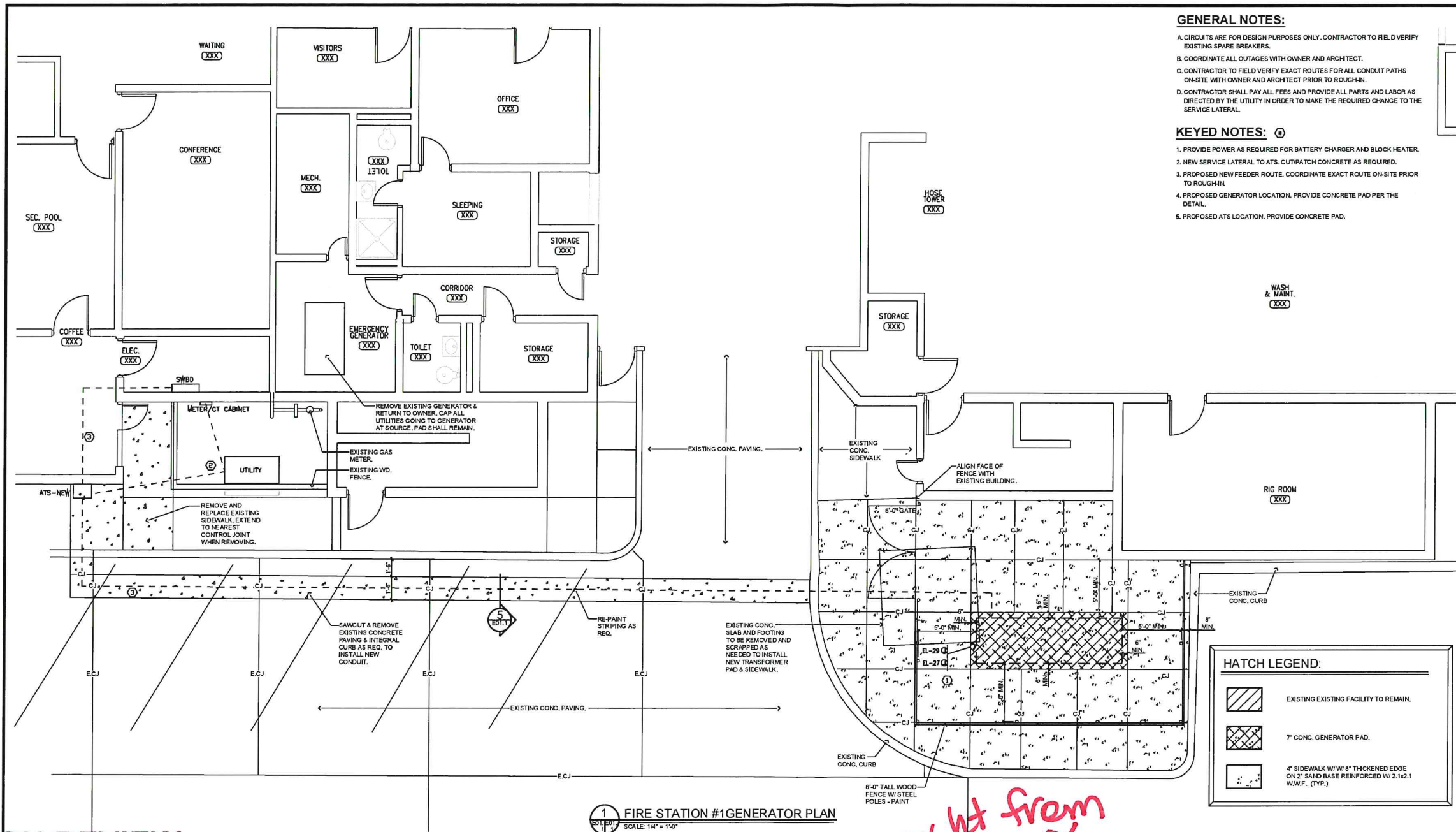
1501 S.W. 104th
Oklahoma City, OK 73159
Phone No. (405) 691-9900
Fax No. (405) 691-2080
www.dap-okc.com

Date: _____

Date: 04/30/2024
Job #: 0704.0

Sheet No.
E01.0
Electrical
Site Plan
Fire Station #1

RECEIVED
MAY 13 2024
PLANNING DEPARTMENT



DESIGN REVIEW
CERTIFICATE OF APPROVAL
CA# DTCA-24-00021
Approval Date: 05/28/2024
Expiration Date: 05/28/2026
Revised Date:
Items: Approved By: lg
With: Condition(s) / Variance
Page 5 of 9

Consultants:

Project No. MB-1683

City of Oklahoma City
Citywide Fire Department Generator Assessment
Oklahoma City, Oklahoma

DESIGN ARCHITECTS PLUS
1501 S.W. 104th
Oklahoma City, OK 73159
Phone No. (405)691-9900
Fax No. (405)691-2080
www.dap-ok.com

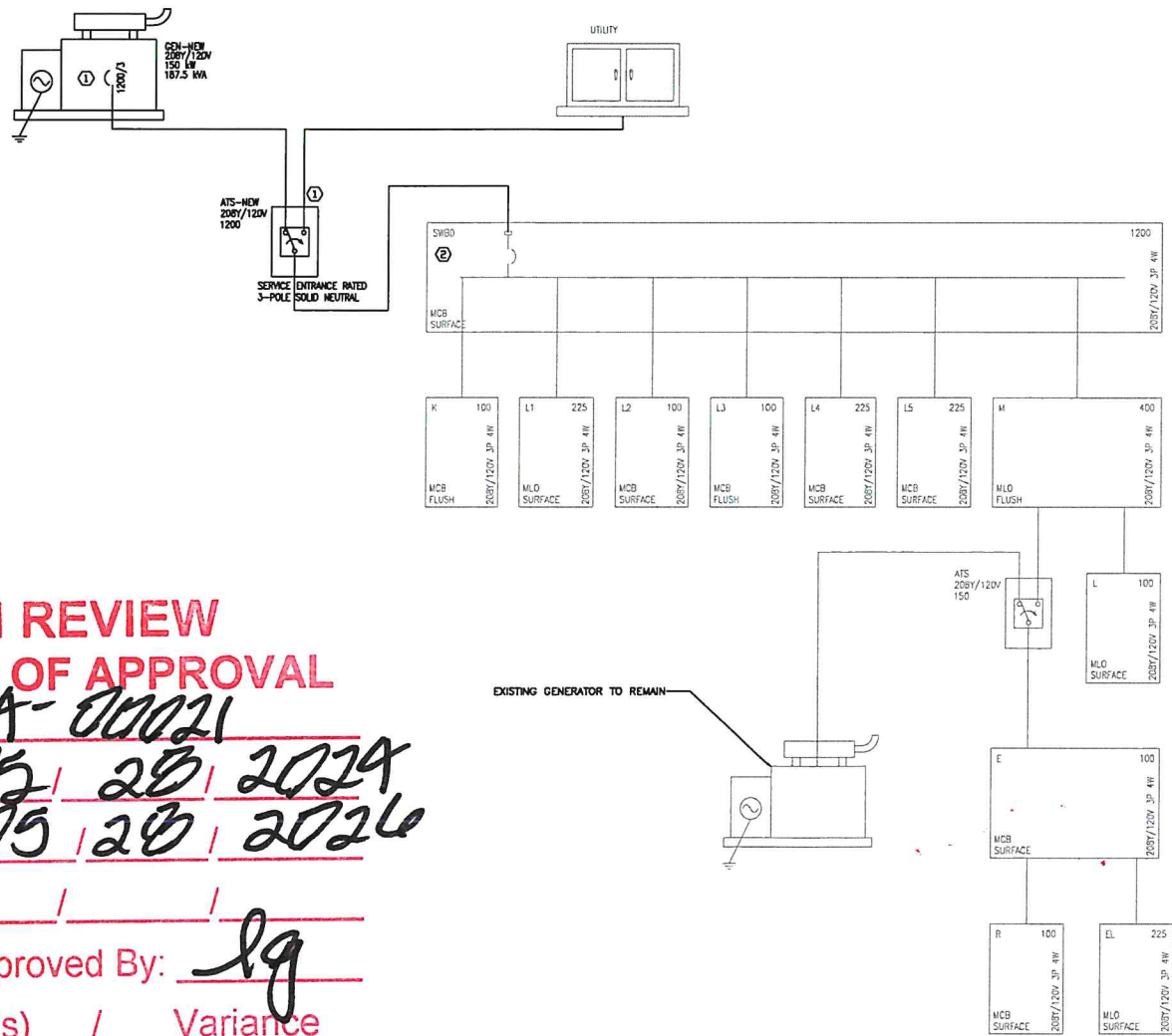
Date: 04/30/2024
Job # 0704.0

Sheet No.
E01.1
Electrical
Floor Plan
Fire Station #1

RECEIVED
MAY 13 2024
PLANNING DEPARTMENT

FEEDER SCHEDULE		
FEEDER AMPS	CONDUIT AND FEEDER	FEEDING THESE DEVICES
80	1-1/4" TC, 3/4" AL, #80	CS1
1200	(4) 3/4" TC, 3/4" AL, #350kcmil N, #3/0G	ATS-NEW
1200	(4) 3/4" TC, 3/4" AL, #350kcmil N	ATS-NEW

SIZING METHOD: COPPER, 80°C #12 THROUGH #1, 75°C 1/0 AND ABOVE



DESIGN REVIEW CERTIFICATE OF APPROVAL

CA# DICA-24-00021
Approval Date: 05 / 28 / 2024
Expiration Date: 05 / 28 / 2026
Revised Date: / /
Items: Approved By: lg
With: Condition(s) / Variance
Page 6 of 8

1 ONE-LINE DIAGRAM - FIRE STATION #1
NO SCALE

GENERAL NOTES:

- CONTRACTOR TO COORDINATE SERVICE LATERAL REMOVAL FROM EXISTING CT CABINET AND NEW SERVICE LATERAL INSTALLATION TO ATS WITH UTILITY PROVIDER. CONTRACTOR SHALL PAY ALL FEES AND PROVIDE ALL PARTS AND LABOR AS DIRECTED BY THE UTILITY IN ORDER TO MAKE THE REQUIRED CHANGE TO THE SERVICE LATERAL.
- CONTRACTOR SHALL FIELD VERIFY CONDUIT/FEEDER PATHWAY FOR FEEDERS BEING EXTENDED FROM NEW ATS. ROUTE FEEDERS AS CONCEALED AS POSSIBLE.
- COORDINATE ALL ROUTES ON-SITE WITH ARCHITECT PRIOR TO ROUGH-IN.

KEYED NOTES: ①

- PROVIDE GROUND FAULT PROTECTION. PROVIDE ENERGY REDUCING MAINTENANCE SWITCH WITH LOCAL STATUS INDICATOR.
- REMOVE ANY SIGNAGE INDICATING THAT THIS IS THE SERVICE ENTRANCE. REMOVE NEUTRAL TO GROUND BOND. PROVIDE INSULATED NEUTRAL BUS IF REQUIRED.



Project No. MB-1683
City of Oklahoma City
Citywide Fire Department Generator
Assessment
Oklahoma City, Oklahoma

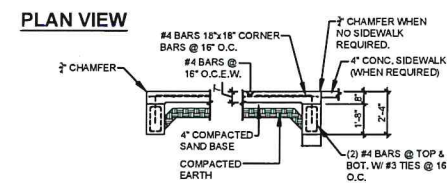
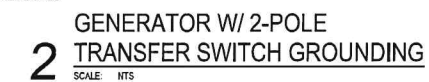
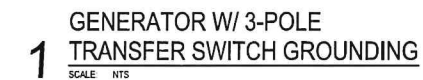


Date: _____

Date: 04/30/2024
Job #: 0704.0

Sheet No.
E01.2
Electrical
One Line Diagram
Fire Station #1

RECEIVED
MAY 13 2024
PLANNING DEPARTMENT



3 GENERATOR PAD DETAIL

Page 7 of 8

RECEIVED
MAY 13 2024
PLANNING DEPARTMENT

